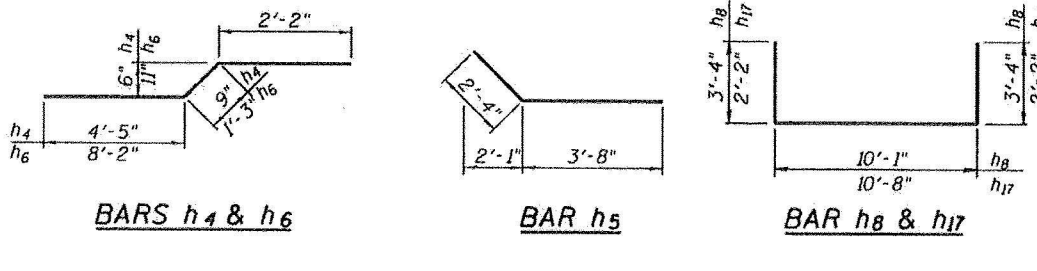
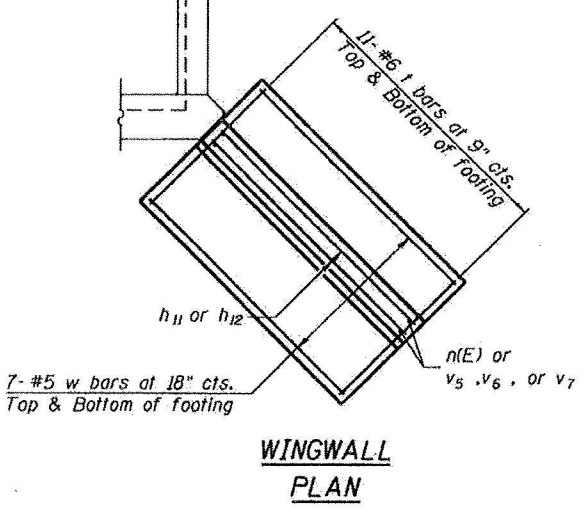
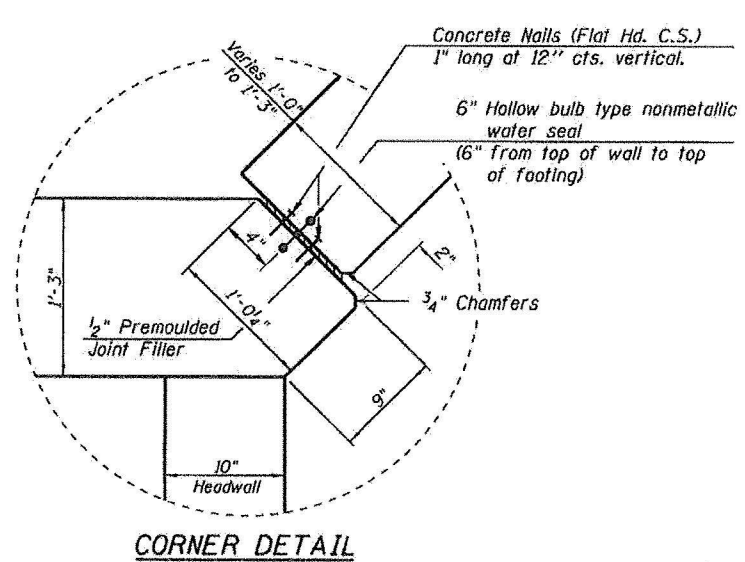
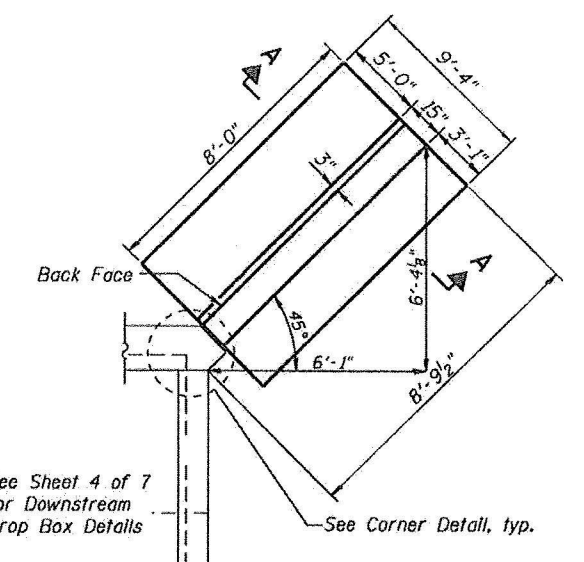


BILL OF MATERIAL

Bar	No.	Size	Length	Shape
a1	22	#7	11'-10"	U
a2	8	#4	10'-2"	—
a3	276	#7	10'-4"	U
a4	80	#4	8'-8"	—
a5	16	#7	10'-8"	U
a6	4	#4	9'-0"	—
a7	9	#7	11'-11"	U
a8	3	#4	9'-5"	—
b	22	#5	9'-6"	—
b1	24	#5	10'-6"	—
d	22	#5	4'-6"	L
d1(E)	20	#4	3'-9"	—
d2	22	#4	12'-6"	—
d3(E)	58	#5	5'-10"	L
d4	28	#4	4'-6"	L
h	42	#6	34'-0"	—
h1	54	#4	33'-6"	—
h2	18	#5	33'-2"	—
h3	18	#5	34'-7"	—
h4	12	#5	7'-4"	—
h5	50	#5	6'-0"	—
h6	12	#5	11'-7"	—
h7	2	#6	10'-2"	—
h8	26	#5	16'-9"	—
h9	52	#5	16'-3"	—
h10	14	#4	19'-5"	—
h11	52	#5	7'-8"	—
h12	6	#4	7'-0"	—
h13	14	#5	28'-8"	—
h14	8	#6	5'-4"	—
h15(E)	4	#5	11'-7"	C
h16	40	#5	12'-10"	—
h17	20	#5	15'-0"	—
h18	32	#5	8'-8"	—
h19	4	#4	18'-0"	—
h20	4	#4	8'-3"	—
n(E)	22	#8	7'-8"	U
n1(E)	40	#8	12'-6"	—
n2(E)	22	#8	9'-0"	—
t	44	#6	9'-0"	—
t1	22	#5	19'-3"	—
v	351	#4	6'-11"	—
v1	4	#4	36'-6"	—
v2	4	#4	28'-9"	—
v3	20	#6	11'-0"	—
v4	20	#6	31'-2"	—
v5	12	#6	12'-9"	—
v6	10	#6	11'-0"	—
v7	6	#4	28'-0"	—
v8	58	#4	8'-7"	—
v10	40	#5	13'-2"	—
v11	20	#5	6'-0"	—
w	28	#5	9'-0"	—
w1	24	#5	10'-2"	—
w2	24	#7	10'-2"	—
Concrete Box Culverts	Cu. Yd.		156.0	
Reinforcement Bars	Pound		23830	
Reinforcement Bars, Epoxy Coated	Pound		2770	



FIELD CUTTING DIAGRAM

Order bars full length. Cut as shown and use remainder of bars in opposite wall.

FIELD CUTTING DATA

Bar	No.	Size	A	B	C
h10	14	#4	19'-5"	3'-10"	15'-7"
h12	6	#4	7'-0"	1'-0"	6'-0"
v1	4	#4	36'-6"	16'-6"	20'-0"
v2	4	#4	28'-9"	12'-9"	16'-0"
v7	6	#4	28'-0"	12'-6"	15'-6"

* h12 & v7 bars in Wing Wall to be ordered full length & cut to fit. Balance of bar to be used in opposite wall.