

STATE OF ILLINOIS
DEPARTMENT OF TRANSPORTATION
DIVISION OF HIGHWAYS

**PROPOSED
HIGHWAY PLANS**

F.A.I. ROUTE 55 F.A.I. ROUTE 74 (I-55/74)
SECTION HSIP 2013-1
PROJECT HSIP-000S(939)
REPROFILING
MCLEAN COUNTY

C-95-011-13

RAAB RD TO N OF VETERANS PKWY

R 1 E R 2 E

SB SECTION BEGINS:
STA. 283+25.53

STATION EQUATION
STA 313+00.00 (BK) =
STA 312+10.37 (AH)

SB OMISSION
STA. 308+51.10 TO STA. 325+65.73

SB SECTION ENDS:
STA. 398+42.20

NB SECTION BEGINS:
STA. 320+38.40

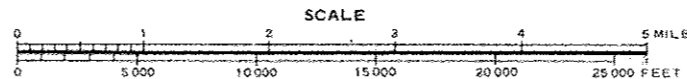
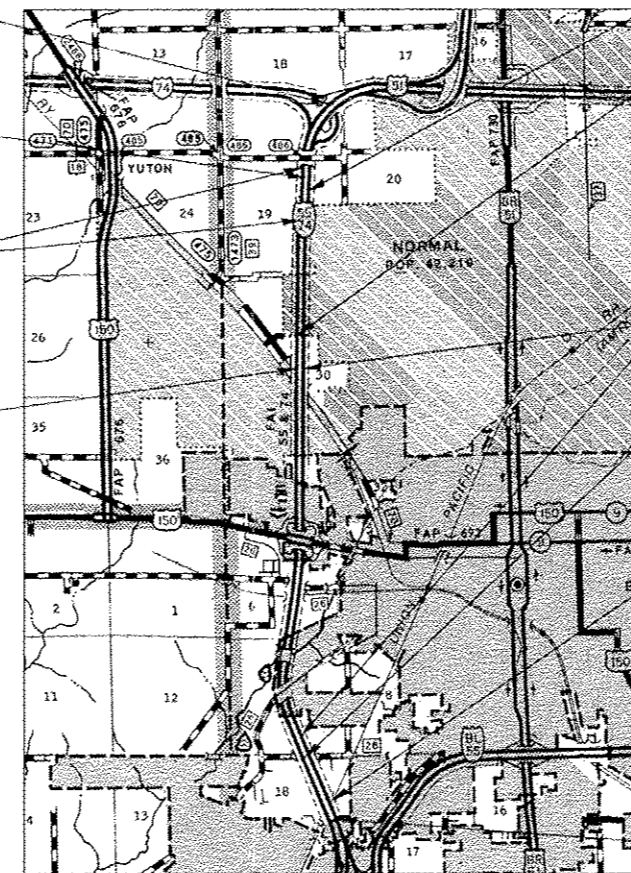
BRIDGE OMISSION
S.N. 057-0233 NB & S.N. 057-0234 SB
STA. 378+82.23 TO STA. 382+88.07

NB OMISSION:
STA. 398+42.20 TO STA. 555+00.00

BRIDGE OMISSION
S.N. 057-0010 NB
STA. 566+69.00 TO STA. 570+72.00

BRIDGE OMISSION
S.N. 057-0007 NB
STA. 590+91.33 TO STA. 595+77.35

NB SECTION ENDS:
STA. 606+79.00



GROSS LENGTH = 28,640.60 FT. = 5.424 MILE
NET LENGTH = 11,687.94 FT. = 2.214 MILE

FOR INDEX OF SHEETS, SEE SHEET NO. 2
FOR SUMMARY OF QUANTITIES SEE SHEET NO. 3

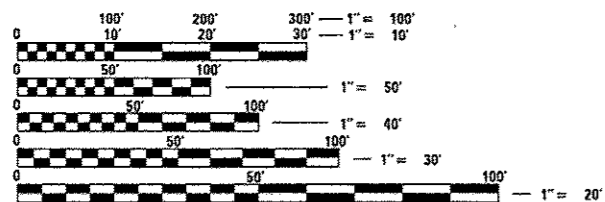
CURRENT TRAFFIC DATA

	LEG A	LEG B
2013 ADT	39,600	40,700
P.U. %	64.5	65.6
S.U. %	3.6	3.6
M.U. %	31.9	30.8

LEG "A" IS I-55 FROM I-74 IN THE NW CORNER OF NORMAL TO IL 9
LEG "B" IS I-55 FROM IL 9 TO VETERANS PARKWAY

DESIGN DESIGNATION

N/A



FULL SIZE PLANS HAVE BEEN PREPARED USING STANDARD ENGINEERING SCALES. REDUCED SIZED PLANS WILL NOT CONFORM TO STANDARD SCALES. IN MAKING MEASUREMENTS ON REDUCED PLANS, THE ABOVE SCALES MAY BE USED.

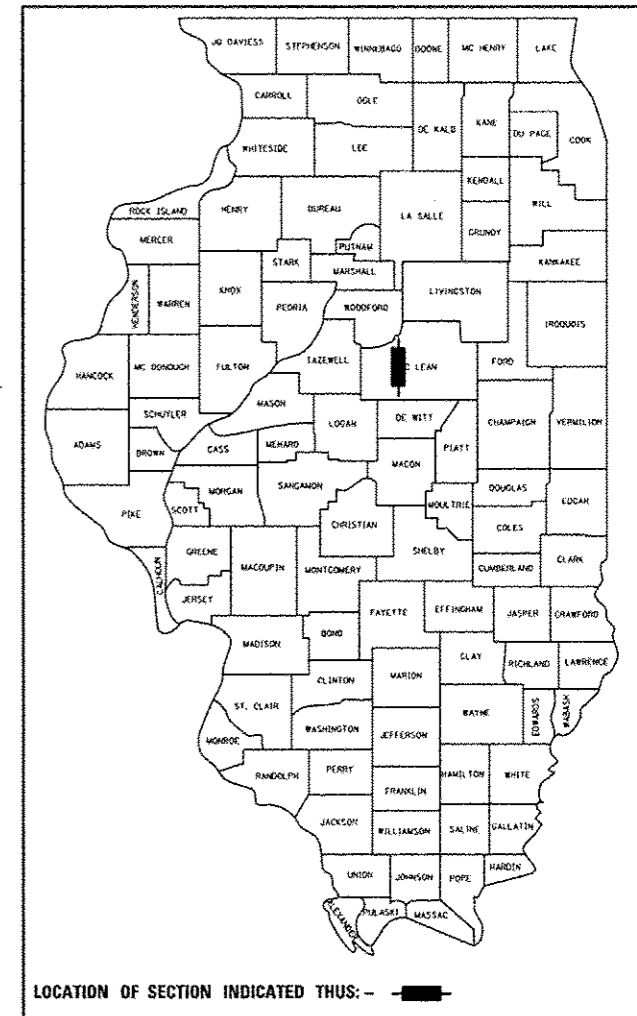
J.U.L.I.E.
JOINT UTILITY LOCATION INFORMATION FOR EXCAVATION
1-800-892-0123
OR 811 (BLOOMINGTON & NORMAL TOWNSHIPS)

PROJECT ENGINEER: NANCY FASIG
SQUAD LEADER: BRIAN J. HOGAN
DESIGNER: ANDREW J. BERGAN
CONTRACT NO. 70A25

F.A.I. RTE.	SECTION	COUNTY	TOTAL SHEETS	SHEET NO.
*	HSIP 2013-1	MCLEAN	11	1

ILLINOIS CONTRACT NO. 70A25
* F.A.I. 55, F.A.I. 74, & U.S. 51

D-95-011-13



LOCATION OF SECTION INDICATED THUS: -

STATE OF ILLINOIS
DEPARTMENT OF TRANSPORTATION
DIVISION OF HIGHWAYS

SUBMITTED APRIL 23 2013
Joseph F. Crowe
DEPUTY DIRECTOR OF HIGHWAYS, REGION ENGINEER
June 28 2013
John D. Baranzelli, P.E.
ENGINEER OF DESIGN AND ENVIRONMENT
June 28 2013
Omer Osman, P.E.
DIRECTOR OF HIGHWAYS, CHIEF ENGINEER

PRINTED BY THE AUTHORITY
OF THE STATE OF ILLINOIS