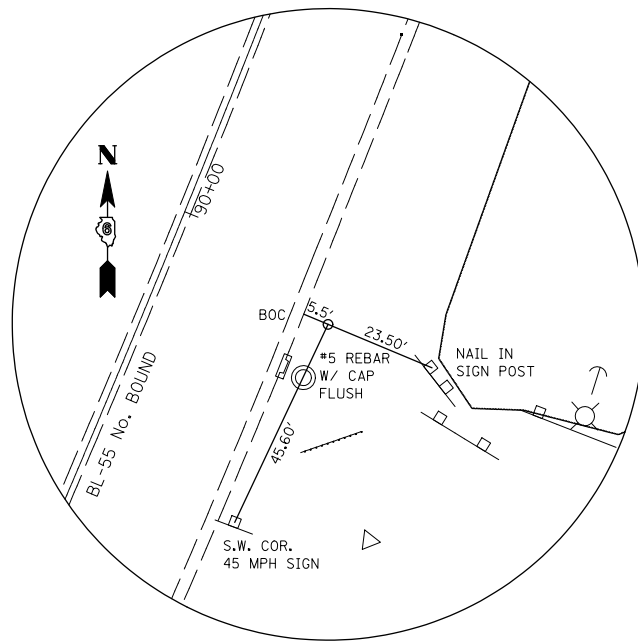
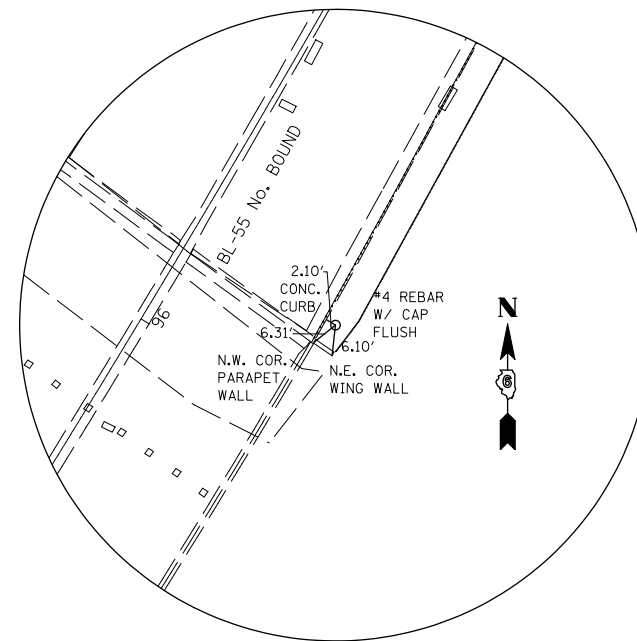


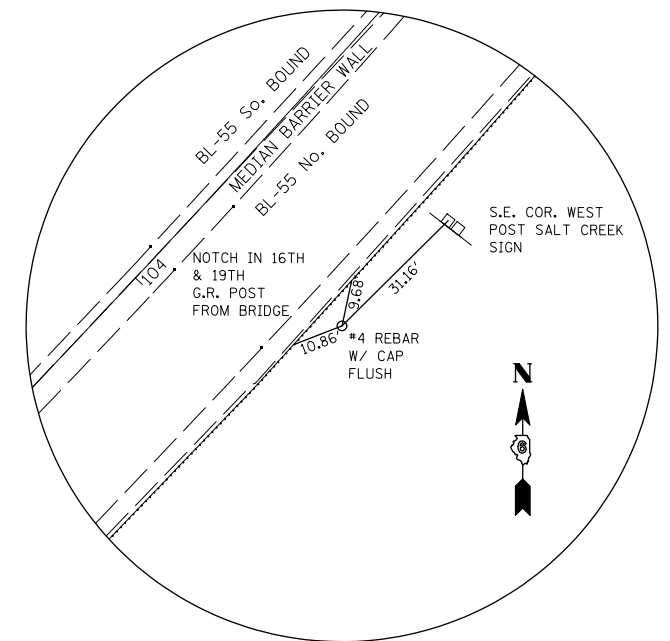
HORIZONTAL TIE
 N 1,264,263.6770
 E 2,514,744.6510
 STATION 80+15.10
 OFFSET 58.59' LEFT



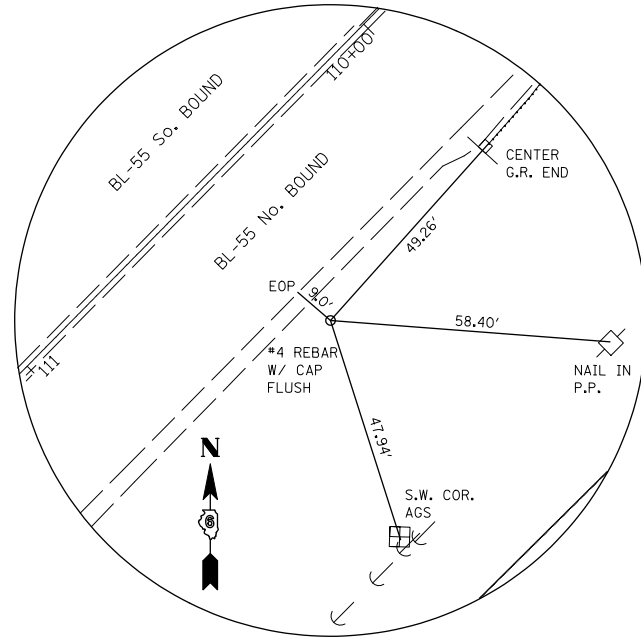
HORIZONTAL TIE
 N 1,263,288.6200
 E 2,514,500.8110
 STATION 90+10.41
 OFFSET 36.51' LEFT



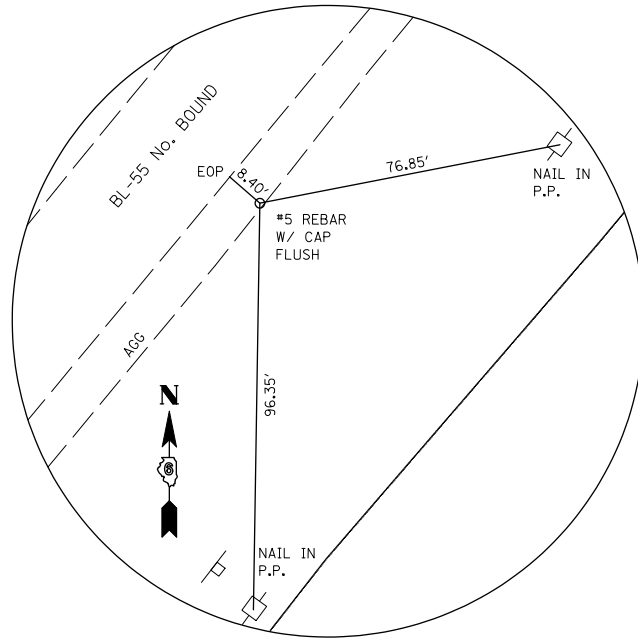
HORIZONTAL TIE
 N 1,262,766.1450
 E 2,514,261.2330
 STATION 95+80.36
 OFFSET 35.42' LEFT



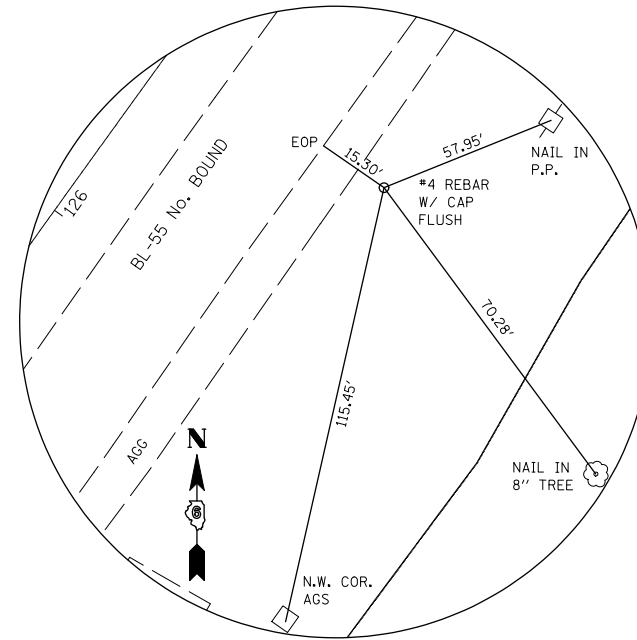
HORIZONTAL TIE
 N 1,262,104.1200
 E 2,513,805.0350
 STATION 103+78.11
 OFFSET 38.31' LEFT



HORIZONTAL TIE
 N 1,261,607.6240
 E 2,513,352.3140
 STATION 110+48.85
 OFFSET 38.37' LEFT



HORIZONTAL TIE
 N 1,260,938.3520
 E 2,512,776.1220
 STATION 119+35.34
 OFFSET 41.26' LEFT



HORIZONTAL TIE
 N 1,260,432.6740
 E 2,512,422.4990
 STATION 125+55.86
 OFFSET 52.90' LEFT

LAST SAVED = 5/23/2013
 PEN TABLE = 06-HA-14-14
 PLOT DRIVER = TR-18pdf-Block-Half.plt

FILE NAME =	USER NAME = jpettibone	DESIGNED -	REVISED -
1:\06103\cad\1\plans\006.D672789-Sht-ATB.dgn		DRAWN -	REVISED -
	PLOT SCALE = 400.0000' / IN.	CHECKED -	REVISED -
	PLOT DATE = 5/23/2013 10:39:41 AM	DATE -	REVISED -

STATE OF ILLINOIS
 DEPARTMENT OF TRANSPORTATION

ALIGNMENT, TIES & BENCHMARKS

SCALE: NONE SHEET NO. 2 OF 2 SHEETS STA. TO STA.

F.A.U. RTE.	SECTION	COUNTY	TOTAL SHEETS	SHEET NO.
7706	23(B-1)	LOGAN	179	30
BUS. LOOP 55 OVER SALT CREEK			CONTRACT NO. 72789	
FED. ROAD DIST. NO.			ILLINOIS FED. AID PROJECT	