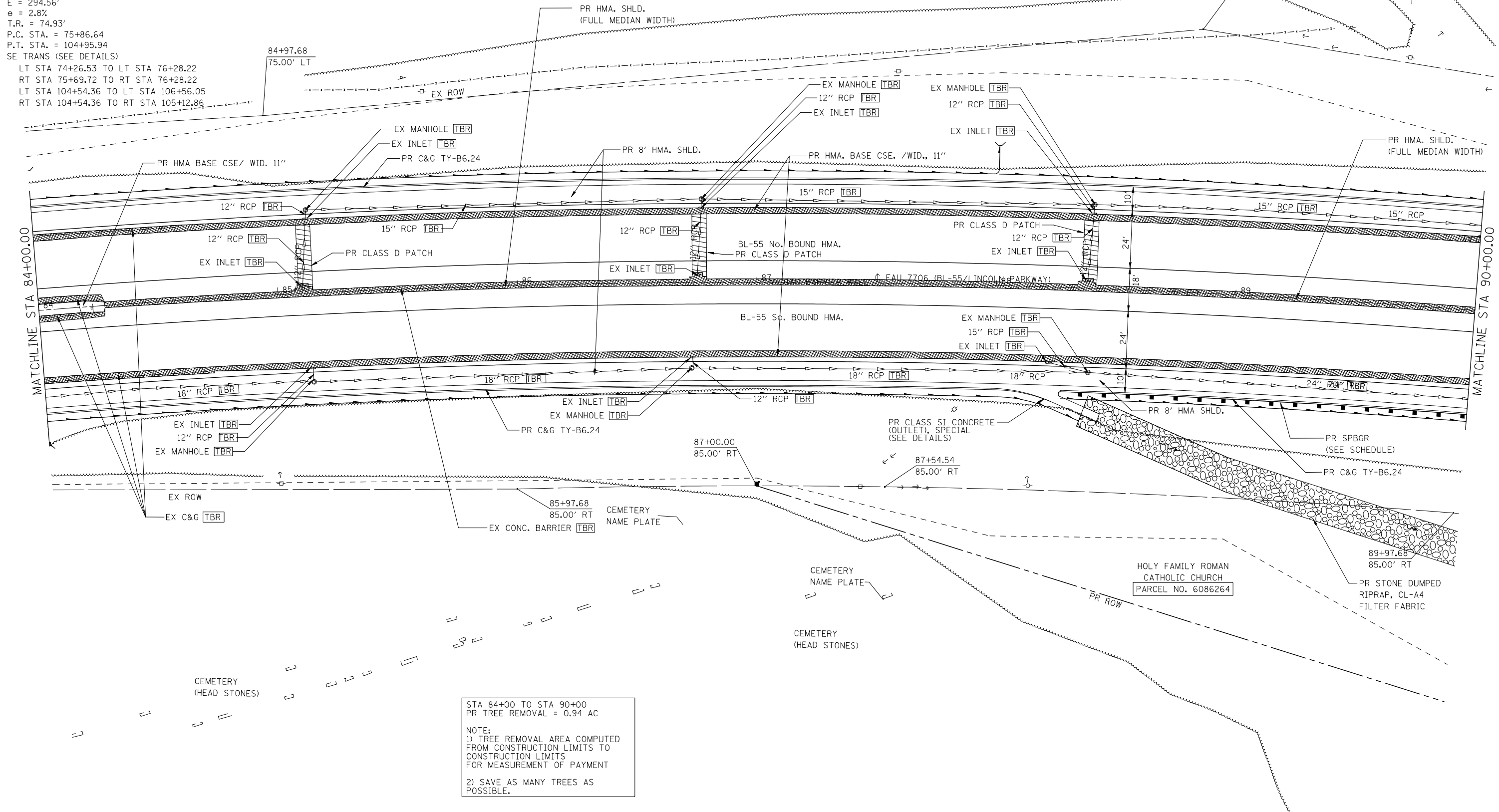


EXIST. CURVE 103  
 PI STA. = 91+15.84  
 $\Delta = 43^\circ 36' 42''$  (RT)  
 $D = 1^\circ 29' 57''$   
 $R = 3,822.15'$   
 $T = 1,529.20'$   
 $L = 2,909.29'$   
 $E = 294.56'$   
 $e = 2.8\%$   
 $T.R. = 74.93'$   
 P.C. STA. = 75+86.64  
 P.T. STA. = 104+95.94  
 SE TRANS (SEE DETAILS)

LT STA 74+26.53 TO LT STA 76+28.22  
 RT STA 75+69.72 TO RT STA 76+28.22  
 LT STA 104+54.36 TO LT STA 106+56.05  
 RT STA 104+54.36 TO RT STA 105+12.86



STA 84+00 TO STA 90+00  
 PR TREE REMOVAL = 0.94 AC

NOTE:  
 1) TREE REMOVAL AREA COMPUTED FROM CONSTRUCTION LIMITS TO CONSTRUCTION LIMITS FOR MEASUREMENT OF PAYMENT  
 2) SAVE AS MANY TREES AS POSSIBLE.

LAST SAVED = 5/23/2013 10:39:49 AM  
 PEN TABLE = 10-HALF.tbl  
 PLOT DRIVER = TR-18pdf-Block-Half.plt

FILE NAME =	USER NAME = jepettibone	DESIGNED - JCN	REVISED -
1:\06103\cad\l\plans\007.D672789-Sht-P1	Pr-f-Bus95.dgn	DRAWN - JJB	REVISED -
	PLOT SCALE = 40.0000' / IN.	CHECKED - VJM	REVISED -
	PLOT DATE = 5/23/2013 10:39:49 AM	DATE - 08/2007	REVISED -

**STATE OF ILLINOIS  
 DEPARTMENT OF TRANSPORTATION**

**PLAN - BUSINESS LOOP 55**

SCALE: 1" = 20' SHEET NO. 3 OF 9 SHEETS STA. 84+00 TO STA. 90+00

F.A.U. RTE.	SECTION	COUNTY	TOTAL SHEETS	SHEET NO.
7706	23(B-1)	LOGAN	179	35
BUS. LOOP 55 OVER SALT CREEK			CONTRACT NO. 72789	
FED. ROAD DIST. NO. ILLINOIS FED. AID PROJECT				