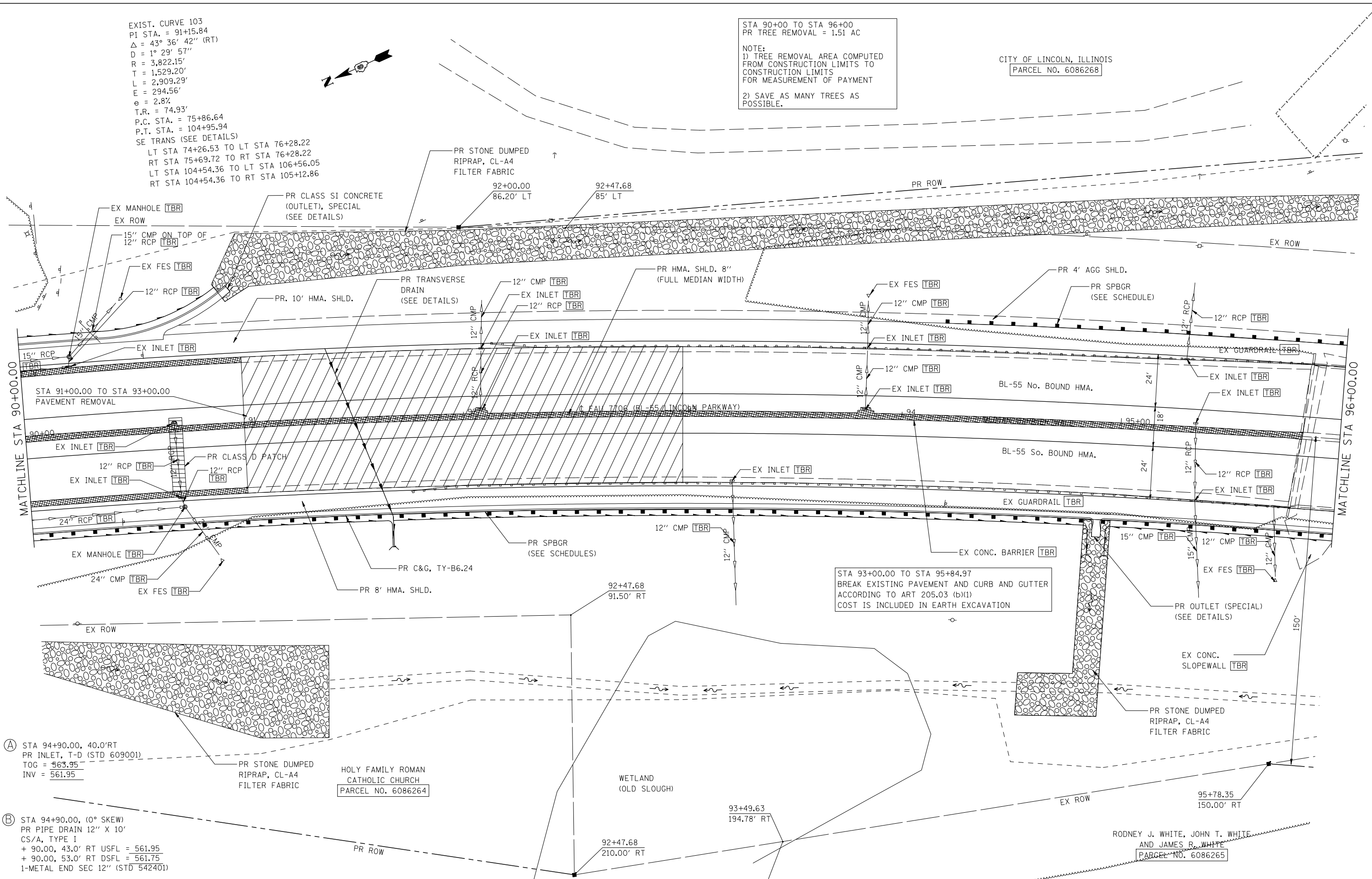


EXIST. CURVE 103
 PI STA. = 91+15.84
 $\Delta = 43^\circ 36' 42''$ (RT)
 $D = 1^\circ 29' 57''$
 $R = 3,822.15'$
 $T = 1,529.20'$
 $L = 2,909.29'$
 $E = 294.56'$
 $e = 2.8\%$
 $T.R. = 74.93'$
 $P.C. STA. = 75+86.64$
 $P.T. STA. = 104+95.94$
 SE TRANS (SEE DETAILS)
 LT STA 74+26.53 TO LT STA 76+28.22
 RT STA 75+69.72 TO RT STA 76+28.22
 LT STA 104+54.36 TO LT STA 106+56.05
 RT STA 104+54.36 TO RT STA 105+12.86

STA 90+00 TO STA 96+00
 PR TREE REMOVAL = 1.51 AC

NOTE:
 1) TREE REMOVAL AREA COMPUTED FROM CONSTRUCTION LIMITS TO CONSTRUCTION LIMITS FOR MEASUREMENT OF PAYMENT
 2) SAVE AS MANY TREES AS POSSIBLE.

CITY OF LINCOLN, ILLINOIS
 PARCEL NO. 6086268



STA 93+00.00 TO STA 95+84.97
 BREAK EXISTING PAVEMENT AND CURB AND GUTTER ACCORDING TO ART 205.03 (b)(1)
 COST IS INCLUDED IN EARTH EXCAVATION

- (A) STA 94+90.00, 40.0' RT
 PR INLET, T-D (STD 609001)
 TOG = 563.95
 INV = 561.95
- (B) STA 94+90.00, (0° SKEW)
 PR PIPE DRAIN 12" X 10"
 CS/A, TYPE I
 + 90.00, 43.0' RT USFL = 561.95
 + 90.00, 53.0' RT DSFL = 561.75
 1-METAL END SEC 12" (STD 542401)

HOLY FAMILY ROMAN CATHOLIC CHURCH
 PARCEL NO. 6086264

RODNEY J. WHITE, JOHN T. WHITE
 AND JAMES R. WHITE
 PARCEL NO. 6086265

LAST SAVED = 5/23/2013 10:39:51 AM
 PEN TABLE = 10:39:51 AM
 PLOT DRIVER = TR-18pdf-Block-Half.plt

FILE NAME =	USER NAME = jepettibone	DESIGNED - JCN	REVISED -
1:\06103\cad\1\plans\007.D672789-Sht-P1-Pr-F-Bus95.dgn		DRAWN - JJB	REVISED -
		CHECKED - VJM	REVISED -
		DATE - 08/2007	REVISED -

**STATE OF ILLINOIS
 DEPARTMENT OF TRANSPORTATION**

PLAN - BUSINESS LOOP 55

SCALE: 1" = 20' SHEET NO. 4 OF 9 SHEETS STA. 90+00 TO STA. 96+00

F.A.U. RTE.	SECTION	COUNTY	TOTAL SHEETS	SHEET NO.
7706	23(B-1)	LOGAN	179	37
BUS. LOOP 55 OVER SALT CREEK			CONTRACT NO. 72789	
FED. ROAD DIST. NO.			ILLINOIS FED. AID PROJECT	