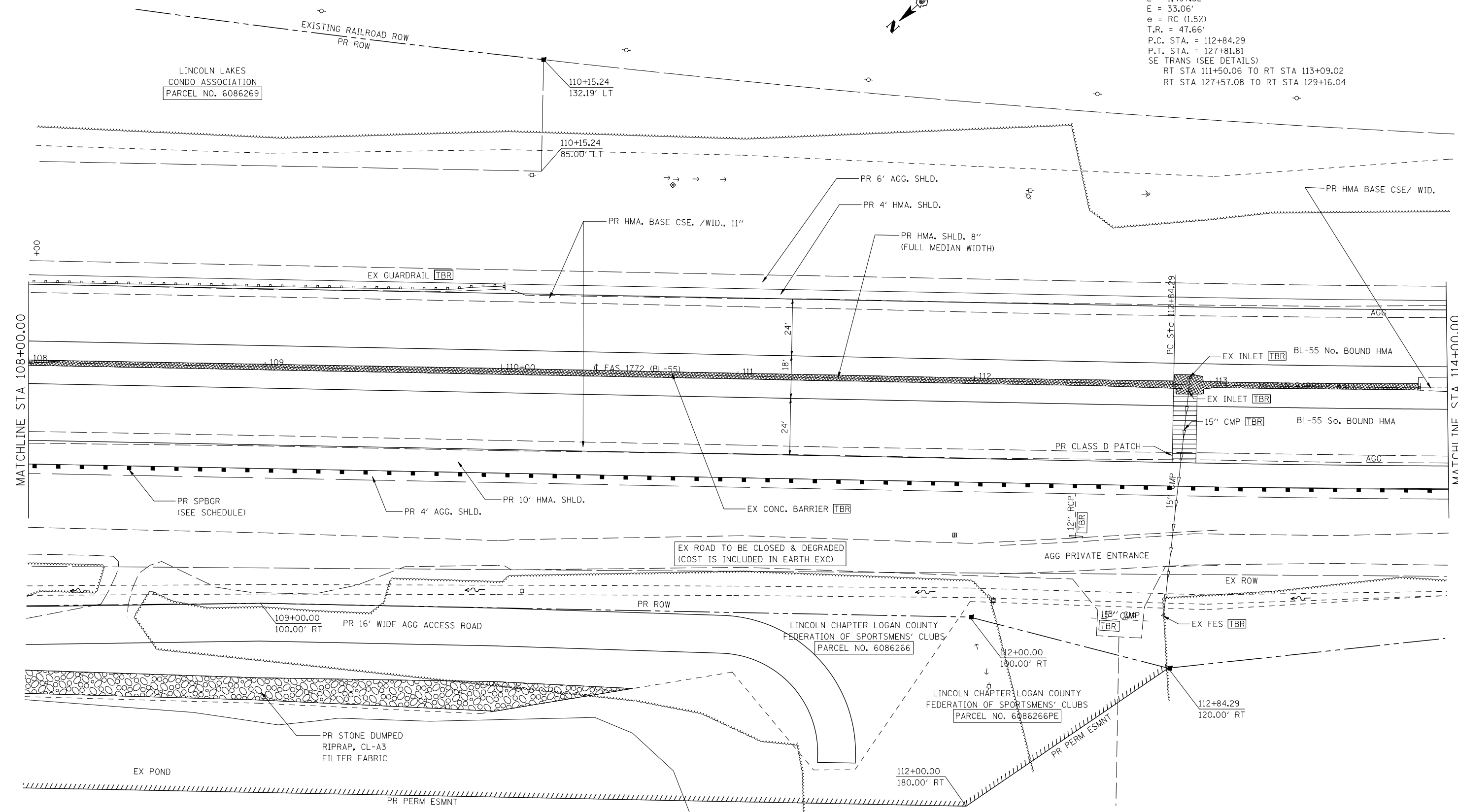


STA 108+00 TO STA 114+00  
PR TREE REMOVAL = 0.45 AC

NOTE:  
1) TREE REMOVAL AREA COMPUTED FROM CONSTRUCTION LIMITS TO CONSTRUCTION LIMITS FOR MEASUREMENT OF PAYMENT  
2) SAVE AS MANY TREES AS POSSIBLE.

EXIST. CURVE 100  
PI STA. = 120+34.99  
 $\Delta = 10^\circ 05' 14''$  (LT)  
D =  $0^\circ 40' 25''$   
R = 8,505.95'  
T = 750.70'  
L = 1,497.52'  
E = 33.06'  
 $\theta = RC$  (1.5%)  
T.R. = 47.66'  
P.C. STA. = 112+84.29  
P.T. STA. = 127+81.81  
SE TRANS (SEE DETAILS)  
RT STA 111+50.06 TO RT STA 113+09.02  
RT STA 127+57.08 TO RT STA 129+16.04



LAST SAVED = 5/23/2013  
PEN TABLE = 09:14:16 AM  
PLOT DRIVER = TR-18pdf-Block-Half.plt

FILE NAME =	USER NAME = jepettibone	DESIGNED - JCN	REVISED -
1:\06103\cad\vt\plans\007.D672789-Sht-P1	Pr-F-Bus95.dgn	DRAWN - JJB	REVISED -
PLOT SCALE = 40.0000' / IN.	CHECKED - VJM	REVISOR -	REVISED -
PLOT DATE = 5/23/2013 10:40:00 AM	DATE - 08/2007	REVISOR -	REVISED -

**STATE OF ILLINOIS  
DEPARTMENT OF TRANSPORTATION**

**PLAN - BUSINESS LOOP 55**

SCALE: 1" = 20'    SHEET NO. 7 OF 9 SHEETS    STA. 108+00 TO STA. 114+00

F.A.U. RTE.	SECTION	COUNTY	TOTAL SHEETS	SHEET NO.
7706	23(B-1)	LOGAN	179	43
BUS. LOOP 55 OVER SALT CREEK			CONTRACT NO. 72789	
FED. ROAD DIST. NO.    ILLINOIS FED. AID PROJECT				