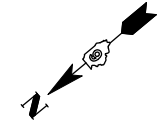


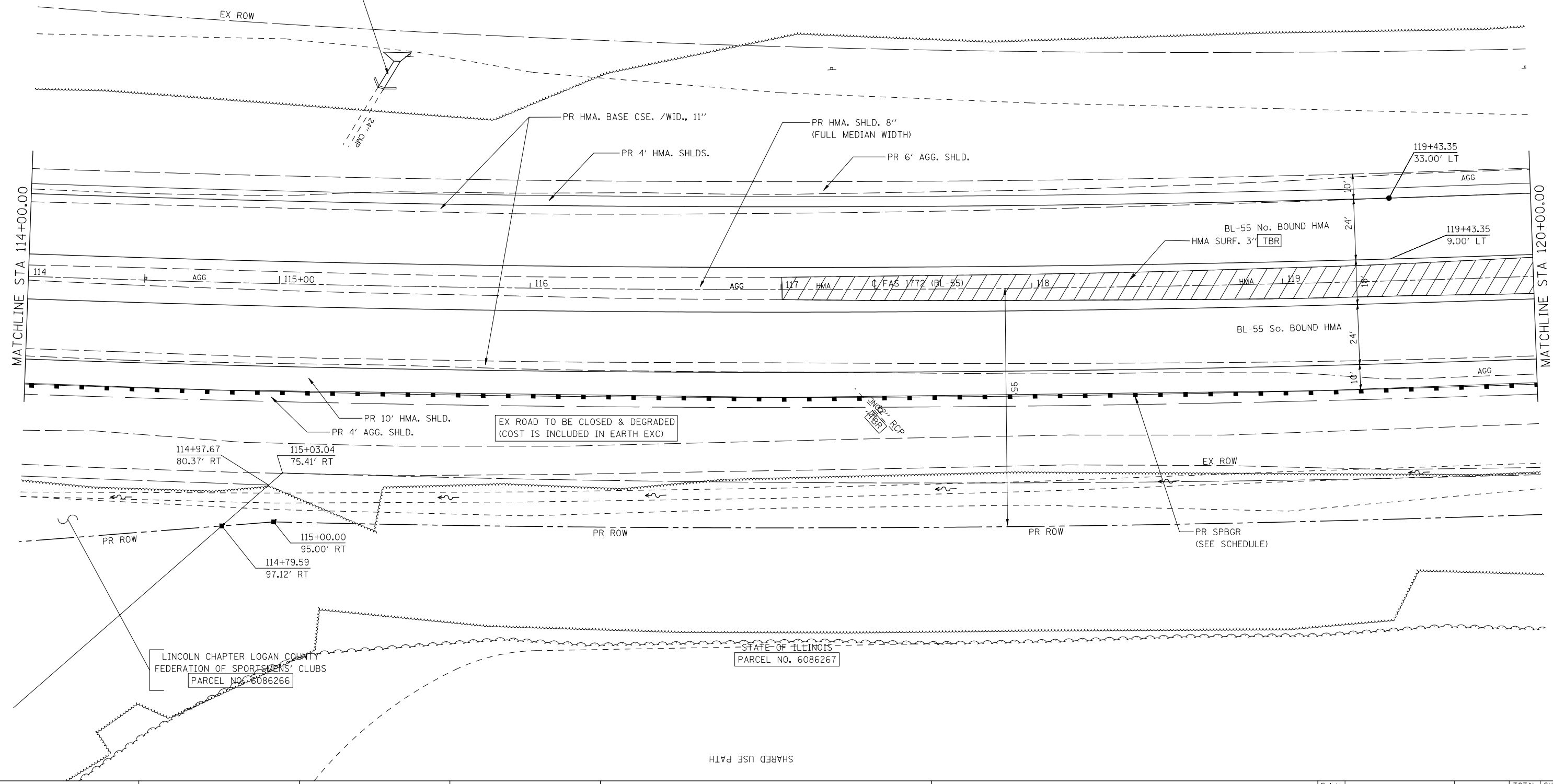
EXIST. CURVE 100
 PI STA. = 120+34.99
 $\Delta = 10^\circ 05' 14''$ (LT)
 $D = 0^\circ 40' 25''$
 $R = 8,505.95'$
 $T = 750.70'$
 $L = 1,497.52'$
 $E = 33.06'$
 $e = RC (1.5\%)$
 $T.R. = 47.66'$
 P.C. STA. = 112+84.29
 P.T. STA. = 127+81.81
 SE TRANS (SEE DETAILS)
 RT STA 111+50.06 TO RT STA 113+09.02
 RT STA 127+57.08 TO RT STA 129+16.04

STA 114+00 TO STA 120+00
 PR TREE REMOVAL = 0.24 AC

NOTE:
 1) TREE REMOVAL AREA COMPUTED FROM CONSTRUCTION LIMITS TO CONSTRUCTION LIMITS FOR MEASUREMENT OF PAYMENT
 2) SAVE AS MANY TREES AS POSSIBLE.



STA 115+41.93
 LT EXTENSION
 12' - PIPE CULVERTS, CLASS D, TYPE 2, 24"
 MATCH EXISTING FLOW LINE AND SLOPE
 24" METAL END SECTION



LAST SAVED = 5/23/2013 10:40:01 AM
 PEN TABLE = 10-HALF.tbl
 PLOT DRIVER = TR-18pdf-Block-Half.plt

FILE NAME =	USER NAME = jepettibone	DESIGNED - JCN	REVISED -
1:\06103\cad\vt\plans\007_0672789-Sht-P1	PrF-Bus95.dgn	DRAWN - JJB	REVISED -
	PLOT SCALE = 40.0000' / IN.	CHECKED - VJM	REVISED -
	PLOT DATE = 5/23/2013 10:40:01 AM	DATE - 08/2007	REVISED -

**STATE OF ILLINOIS
 DEPARTMENT OF TRANSPORTATION**

PLAN - BUSINESS LOOP 55

SCALE: 1" = 20' SHEET NO. 8 OF 9 SHEETS STA. 114+00 TO STA. 120+00

F.A.U. RTE.	SECTION	COUNTY	TOTAL SHEETS	SHEET NO.
7706	23(B-1)	LOGAN	179	45
BUS. LOOP 55 OVER SALT CREEK			CONTRACT NO. 72789	
FED. ROAD DIST. NO.		ILLINOIS FED. AID PROJECT		