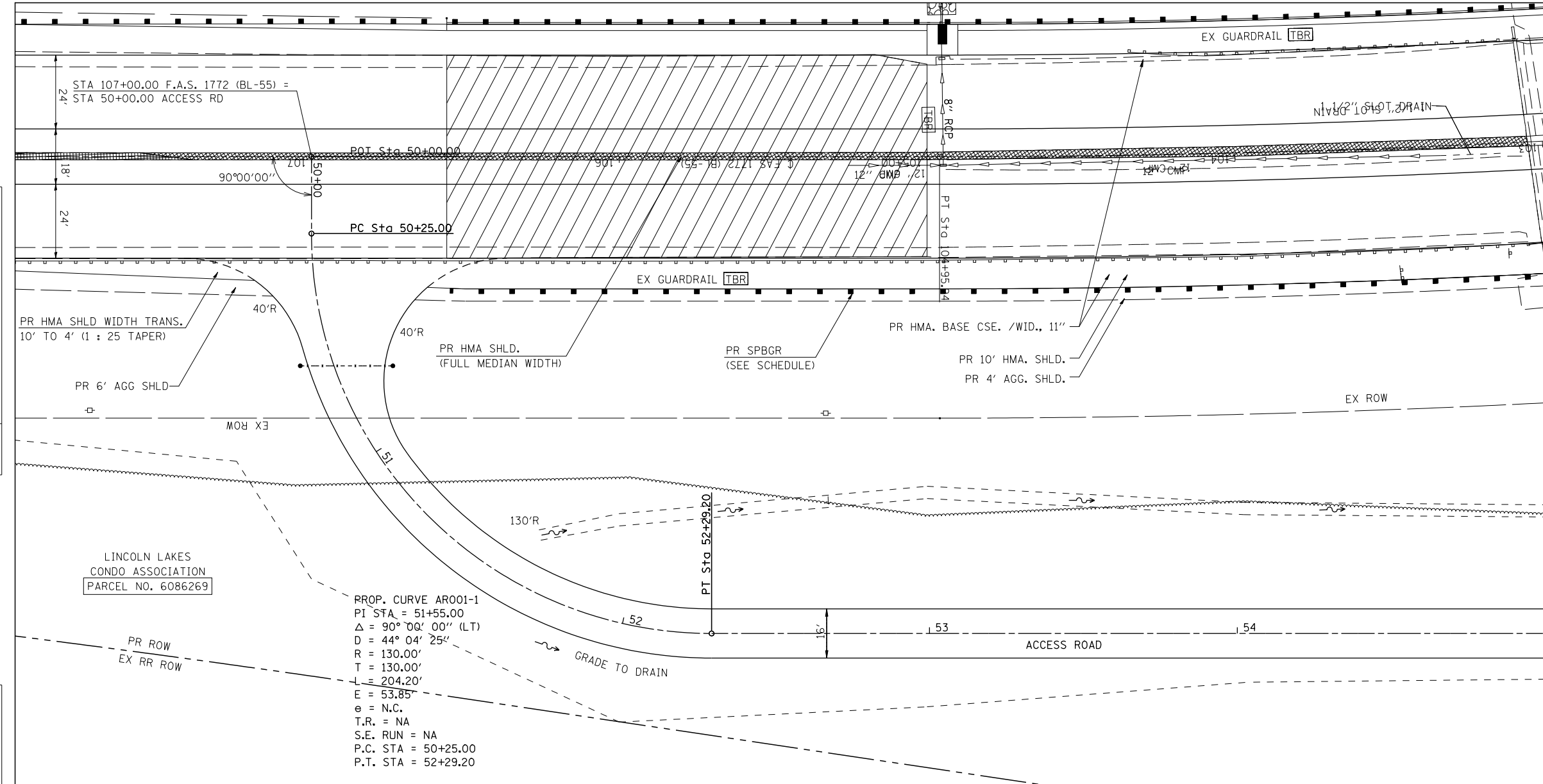


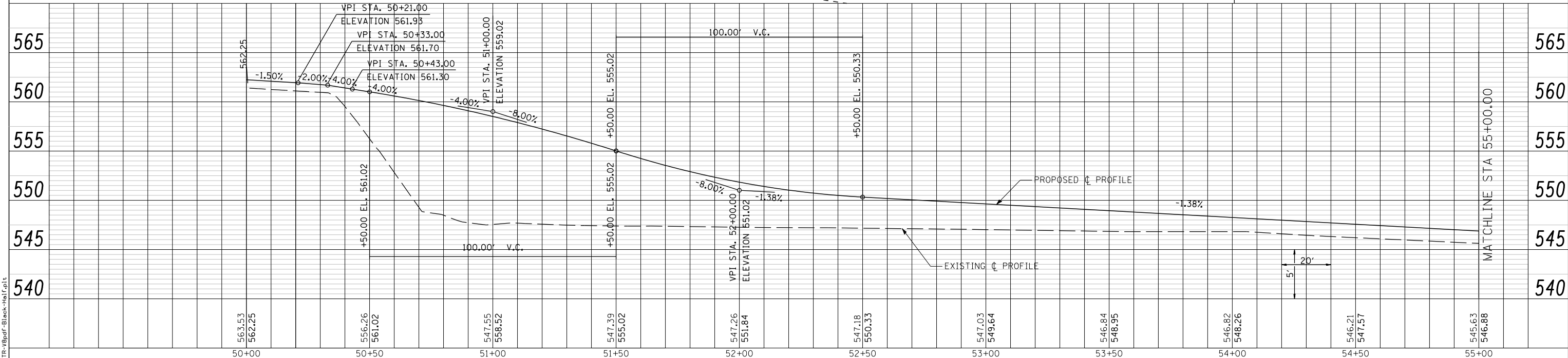
PLAN	SURVEYED	DATE
	PLOTTED	
	CHECKED	
	BY	
	NO. BOOK	
	NO.	

PROFILE	SURVEYED	DATE
	PLOTTED	
	CHECKED	
	BY	
	NO. BOOK	
	NO.	



LINCOLN LAKES
CONDO ASSOCIATION
PARCEL NO. 6086269

PROP. CURVE AR001-1
PI STA = 51+55.00
 $\Delta = 90^\circ 00' 00''$ (LT)
R = 130.00'
T = 130.00'
L = 204.20'
E = 53.85'
 $\theta =$ N.C.
T.R. = NA
S.E. RUN = NA
P.C. STA = 50+25.00
P.T. STA = 52+29.20



LAST SAVED = 5/23/2013
PEN TABLE = 08-HaIF.tbl
PLOT DRIVER = I:\Rspdf-Black-HaIF.plt

FILE NAME =	USER NAME = jepettibone	DESIGNED -	REVISED -	STATE OF ILLINOIS DEPARTMENT OF TRANSPORTATION	PLAN & PROFILE - ACCESS ROAD			F.A.U. RTE.	SECTION	COUNTY	TOTAL SHEETS	SHEET NO.
:\061033\cad\plans\009_0672789-Sht-Plan-Access-Road.dgn		DRAWN -	REVISED -		7706	23(B-1)	LOGAN	179	50			
PLOT SCALE = 40.0000' / IN.		CHECKED -	REVISED -		BUS. LOOP 55 OVER SALT CREEK				CONTRACT NO. 72789			
PLOT DATE = 5/23/2013 10:40:08 AM		DATE -	REVISED -		FED. ROAD DIST. NO.				ILLINOIS FED. AID PROJECT			