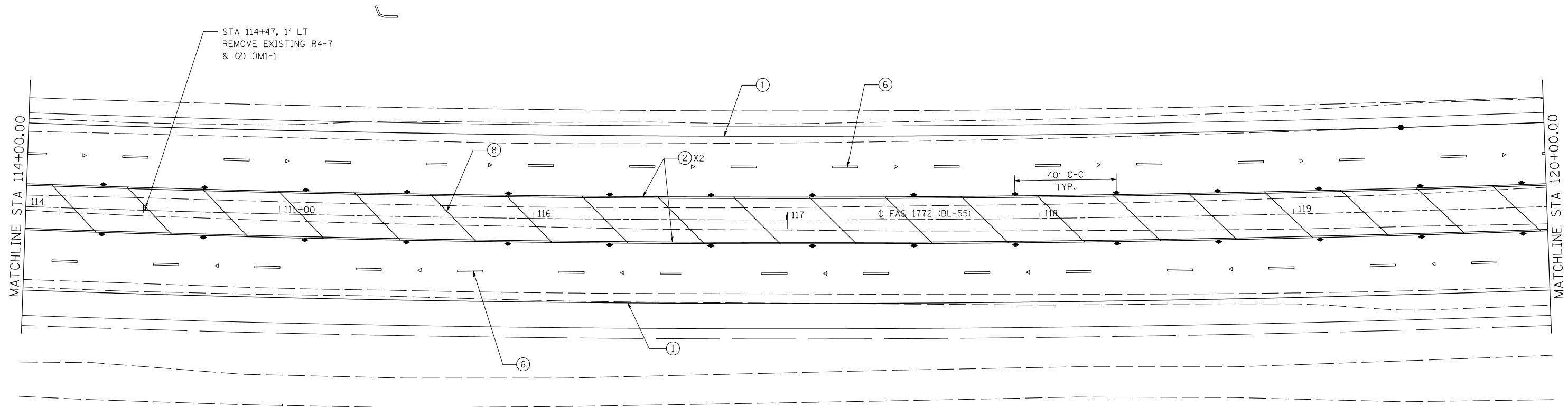
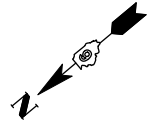


PAVEMENT MARKING LEGEND

- ① PR MODIFIED URETHANE PAVEMENT MARKING - LINE 5" (WHITE, SOLID)
- ② PR MODIFIED URETHANE PAVEMENT MARKING - LINE 5" (YELLOW, SOLID)
- ③ PR MODIFIED URETHANE PAVEMENT MARKING - LINE 6" (WHITE, SOLID)
- ④ PR MODIFIED URETHANE PAVEMENT MARKING - LINE 5" (WHITE, SKIP-DASH)
- ⑤ PR MODIFIED URETHANE PAVEMENT MARKING - LINE 12" (YELLOW, SOLID @ 30' CTS)
- ⑥ PR PREFORMED PLASTIC PAVEMENT MARKING, TYPE B - INLAID - LINE 5" (WHITE, SKIP-DASH)
- ⑦ PR PREFORMED PLASTIC PAVEMENT MARKING, TYPE B - INLAID - LINE 6" (WHITE, SKIP-DASH) (2'-6' SPACING)
- ⑧ PR PREFORMED PLASTIC PAVEMENT MARKING, TYPE B - INLAID - LINE 12" (YELLOW, SOLID @ 30' CTS)
- ⑨ PR PREFORMED PLASTIC PAVEMENT MARKING, TYPE B - INLAID - LINE 24" (WHITE, SOLID)
- ↖ PR PREFORMED PLASTIC PAVEMENT MARKING, TYPE B - INLAID - LETTERS & SYMBOLS (WHITE, LARGE ARROWS)
- PR RAISED REFLECTIVE PAVEMENT MARKER (ONE-WAY CRYSTAL)
- PR RAISED REFLECTIVE PAVEMENT MARKER (ONE-WAY AMBER)
- ◆ PR RAISED REFLECTIVE PAVEMENT MARKER (TWO-WAY AMBER)



LAST SAVED = 5/23/2013 10:40:56 AM
 PEN TABLE = 081414141
 PLOT DRIVER = TR-18pdf-Block-Half.plt



FILE NAME =	USER NAME = jepettibone	DESIGNED -	REVISED -
1:\06103\cad\1\plans\019_0672789-Sht-PM.kdgn		DRAWN -	REVISED -
	PLOT SCALE = 40.0000' / IN.	CHECKED -	REVISED -
	PLOT DATE = 5/23/2013 10:40:56 AM	DATE -	REVISED -

**STATE OF ILLINOIS
DEPARTMENT OF TRANSPORTATION**

PAVEMENT MARKING DETAILS

SCALE: 1" = 20' SHEET NO. 8 OF 9 SHEETS STA. 114+00.00 TO STA. 120+00.00

F.A.U. RTE.	SECTION	COUNTY	TOTAL SHEETS	SHEET NO.
7706	23(B-1)	LOGAN	179	80
BUS. LOOP 55 OVER SALT CREEK			CONTRACT NO. 72789	
FED. ROAD DIST. NO.		ILLINOIS FED. AID PROJECT		