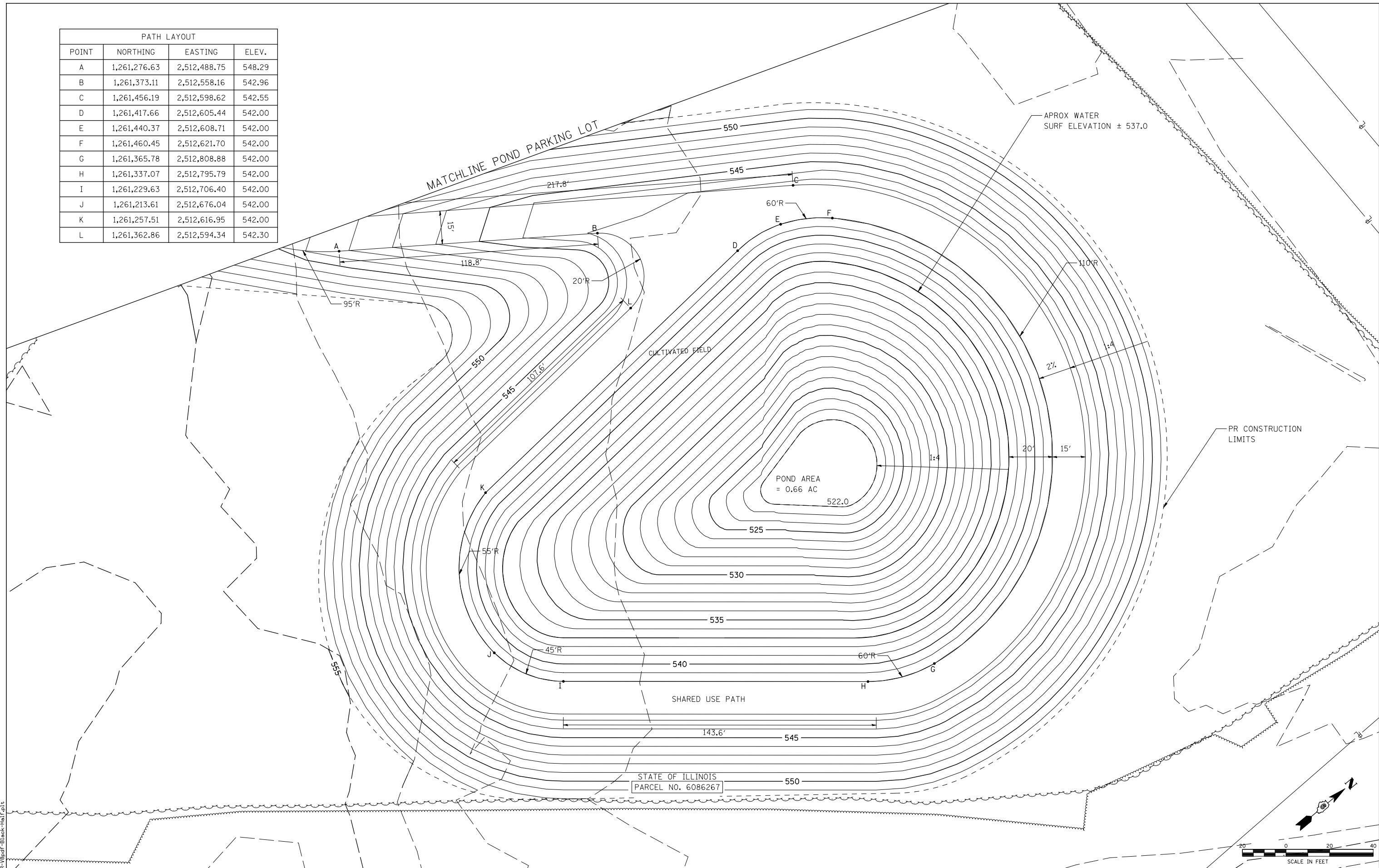


PATH LAYOUT			
POINT	NORTHING	EASTING	ELEV.
A	1,261,276.63	2,512,488.75	548.29
B	1,261,373.11	2,512,558.16	542.96
C	1,261,456.19	2,512,598.62	542.55
D	1,261,417.66	2,512,605.44	542.00
E	1,261,440.37	2,512,608.71	542.00
F	1,261,460.45	2,512,621.70	542.00
G	1,261,365.78	2,512,808.88	542.00
H	1,261,337.07	2,512,795.79	542.00
I	1,261,229.63	2,512,706.40	542.00
J	1,261,213.61	2,512,676.04	542.00
K	1,261,257.51	2,512,616.95	542.00
L	1,261,362.86	2,512,594.34	542.30



LAST SAVED = 5/16/2013
 PEN TABLE = 09-HALF-143
 PLOT DRIVER = TR-108pdf-Block-Half.plt

FILE NAME =	USER NAME = jepettibone	DESIGNED -	REVISED -
1:\06103\cad\1\plans\021.D672789-Sht-Details-Pond-Small-Option.dgn		DRAWN -	REVISED -
	PLOT SCALE = 40.0000' / IN.	CHECKED -	REVISED -
	PLOT DATE = 5/23/2013 10:40:59 AM	DATE -	REVISED -

STATE OF ILLINOIS
DEPARTMENT OF TRANSPORTATION

PLAN - SMALL POND OPTION
 SCALE: 1"=20' SHEET NO. 2 OF 3 SHEETS STA. TO STA.

F.A.U. RTE.	SECTION	COUNTY	TOTAL SHEETS	SHEET NO.
7706	23(B-1)	LOGAN	179	83
BUS. LOOP 55 OVER SALT CREEK			CONTRACT NO.	
ILLINOIS FED. AID PROJECT				