

STATE OF ILLINOIS  
DEPARTMENT OF TRANSPORTATION

EAST CURB LINE

Location	Station	Offset	Theoretical Grade Elevations
N. End N. Appr. Pav't	96+20.94	-43.00	566.81
A	96+30.83	-43.00	566.86
B	96+40.71	-43.00	566.91
S. End N. Appr. Pav't.	96+50.60	-43.00	566.96

EAST EDGE OF PAVEMENT

Location	Station	Offset	Theoretical Grade Elevations
N. End N. Appr. Pav't	96+20.85	-33.00	566.53
A	96+30.77	-33.00	566.58
B	96+40.68	-33.00	566.63
S. End N. Appr. Pav't.	96+50.60	-33.00	566.68

☉ ROADWAY AND PROFILE GRADE

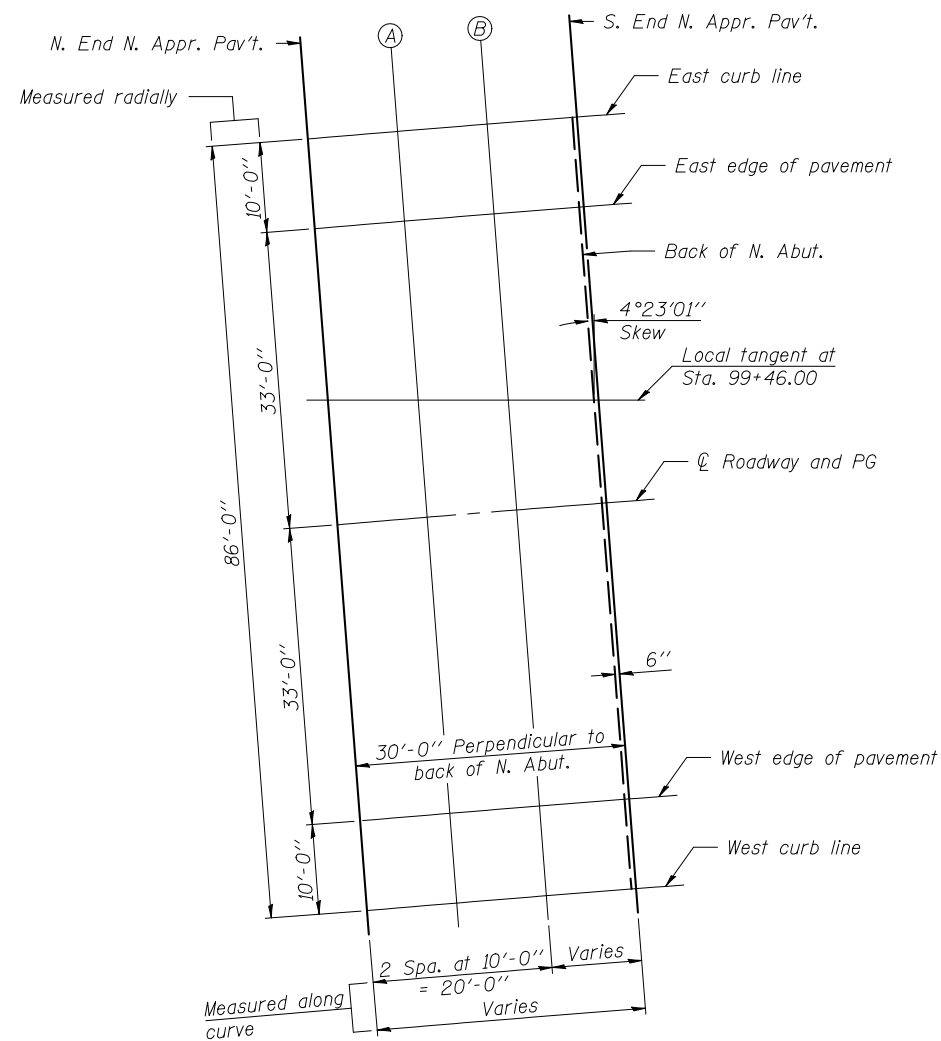
Location	Station	Offset	Theoretical Grade Elevations
N. End N. Appr. Pav't	96+20.57	0.00	565.61
A	96+30.57	0.00	565.66
B	96+40.57	0.00	565.71
S. End N. Appr. Pav't.	96+50.57	0.00	565.76

WEST EDGE OF PAVEMENT

Location	Station	Offset	Theoretical Grade Elevations
N. End N. Appr. Pav't	96+20.28	33.00	564.68
A	96+30.37	33.00	564.73
B	96+40.46	33.00	564.78
S. End N. Appr. Pav't.	96+50.54	33.00	564.83

WEST CURB LINE

Location	Station	Offset	Theoretical Grade Elevations
N. End N. Appr. Pav't	96+20.19	43.00	564.40
A	96+30.31	43.00	564.45
B	96+40.42	43.00	564.50
S. End N. Appr. Pav't.	96+50.54	43.00	564.55



PLAN

DESIGNED	EML
CHECKED	JJD
DRAWN	JJD
CHECKED	EML

Note:  
Horizontal dimensions are given along ☉ individual location.



TOP OF NORTH APPROACH  
PAVEMENT ELEVATIONS  
F.A.U. ROUTE 7706 - SECTION 23(B-1)  
LOGAN COUNTY  
STATION 99+46.00  
STRUCTURE NO. 054-0512