

STATE OF ILLINOIS
DEPARTMENT OF TRANSPORTATION

ROUTE NO.	SECTION	COUNTY	TOTAL SHEETS	SHEET NO.	SHEET NO. 13 52 SHEETS
F.A.U. 7706	23(B-1)	LOGAN	179	97	
FED. ROAD DIST. NO. 7	ILLINOIS	FED. AID PROJECT-			

Contract #72789

EAST CURB LINE

Location	Station	Offset	Theoretical Grade Elevations
N. End S. Appr. Pav't	102+35.43	-43.00	567.03
A	102+45.32	-43.00	566.98
B	102+55.20	-43.00	566.93
S. End S. Appr. Pav't.	102+65.09	-43.00	566.88

EAST EDGE OF PAVEMENT

Location	Station	Offset	Theoretical Grade Elevations
N. End S. Appr. Pav't	102+35.43	-33.00	566.75
A	102+45.35	-33.00	566.70
B	102+55.26	-33.00	566.65
S. End S. Appr. Pav't.	102+65.18	-33.00	566.60

☉ ROADWAY AND PROFILE GRADE

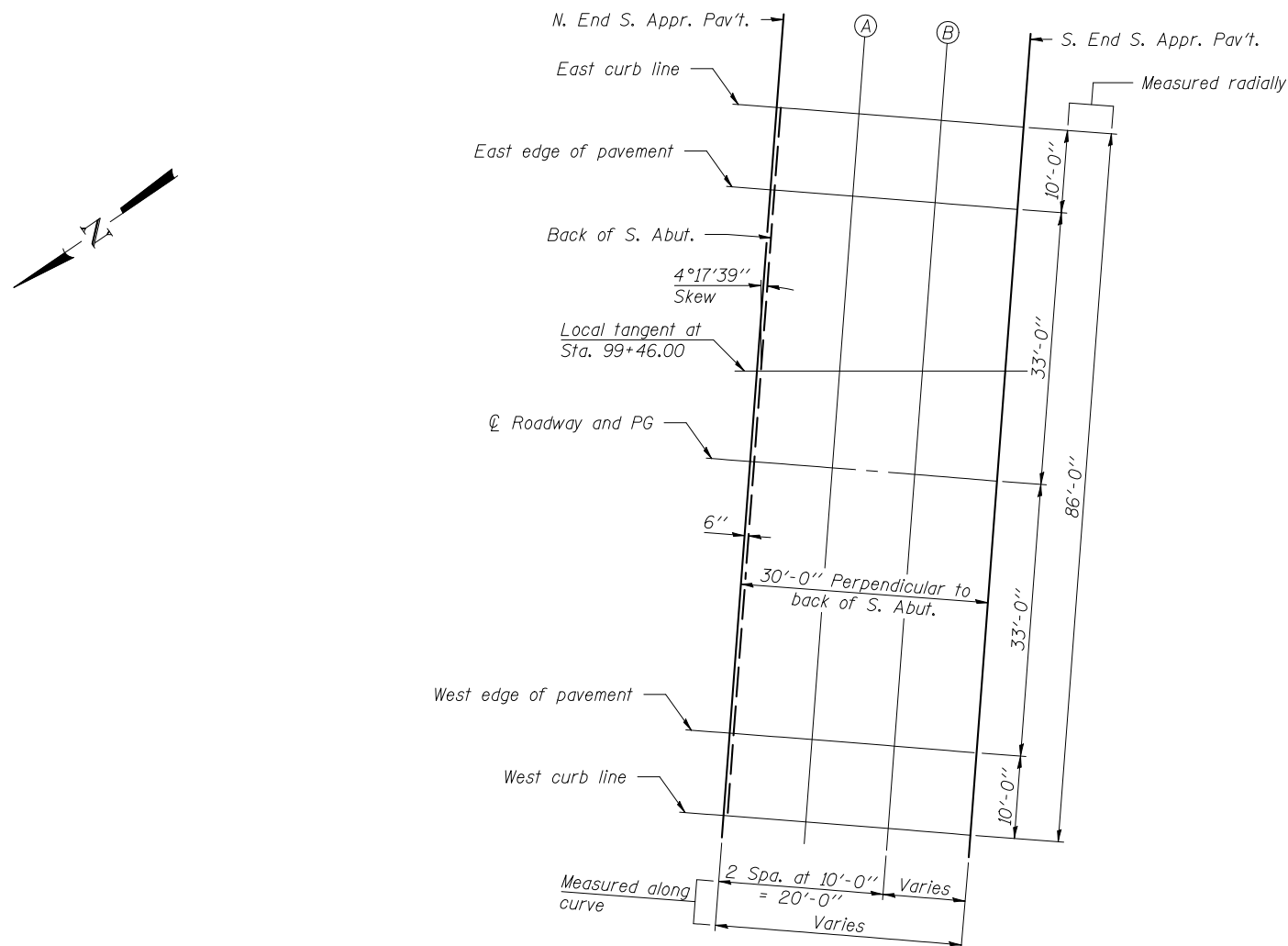
Location	Station	Offset	Theoretical Grade Elevations
N. End S. Appr. Pav't	102+35.46	0.00	565.82
A	102+45.46	0.00	565.77
B	102+55.46	0.00	565.72
S. End S. Appr. Pav't.	102+65.46	0.00	565.67

WEST EDGE OF PAVEMENT

Location	Station	Offset	Theoretical Grade Elevations
N. End S. Appr. Pav't	102+35.49	33.00	564.90
A	102+45.57	33.00	564.85
B	102+55.66	33.00	564.80
S. End S. Appr. Pav't.	102+65.75	33.00	564.75

WEST CURB LINE

Location	Station	Offset	Theoretical Grade Elevations
N. End S. Appr. Pav't	102+35.49	43.00	564.62
A	102+45.61	43.00	564.57
B	102+55.72	43.00	564.52
S. End S. Appr. Pav't.	102+65.84	43.00	564.47



PLAN

Note:
Horizontal dimensions are given along ☉ individual location.

DESIGNED	EML
CHECKED	JJD
DRAWN	JJD
CHECKED	EML

HORNER & SHIFRIN, INC.
ENGINEERS

TOP OF SOUTH APPROACH
PAVEMENT ELEVATIONS
F.A.U. ROUTE 7706 - SECTION 23(B-1)
LOGAN COUNTY
STATION 99+46.00
STRUCTURE NO. 054-0512