

STATE OF ILLINOIS
DEPARTMENT OF TRANSPORTATION

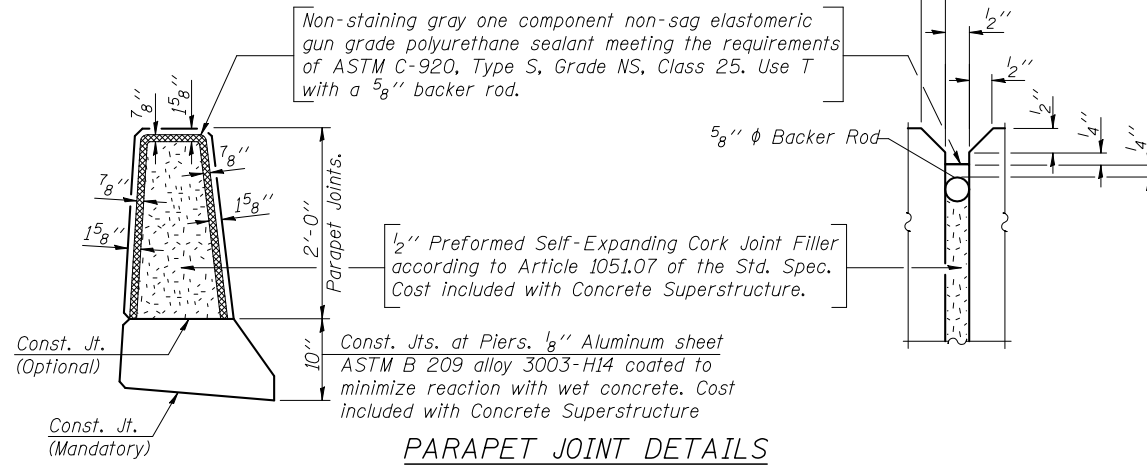
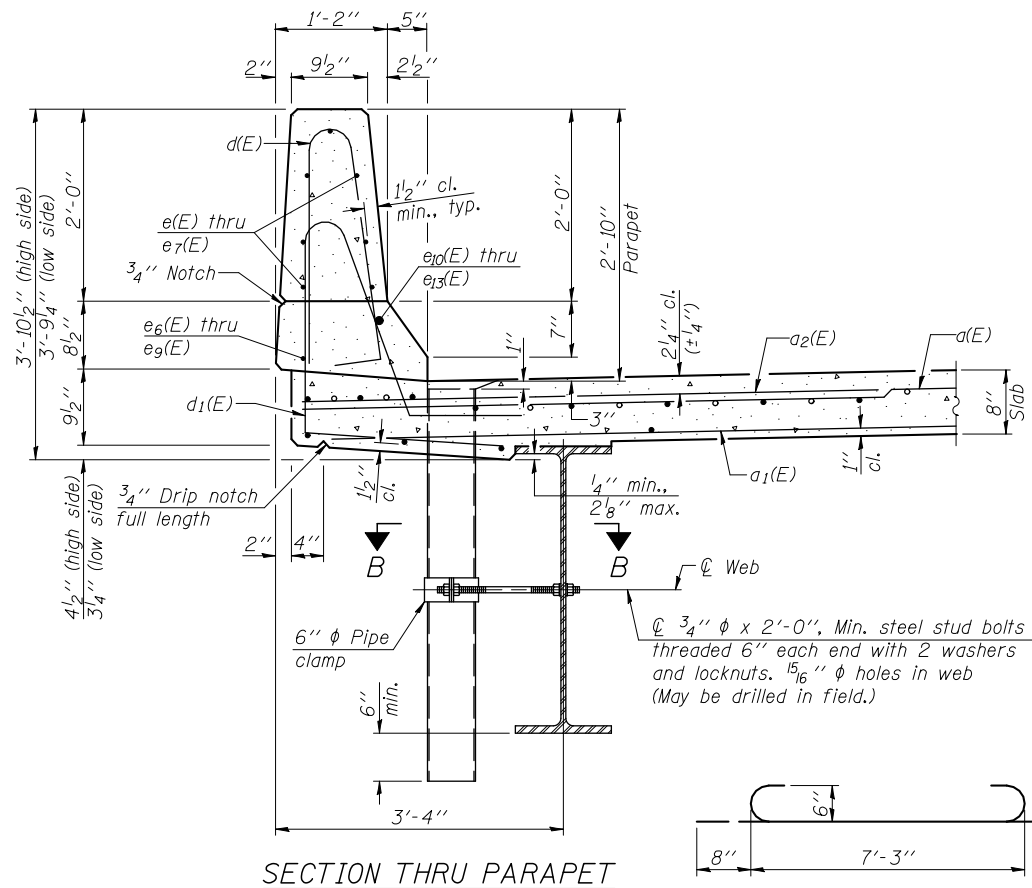
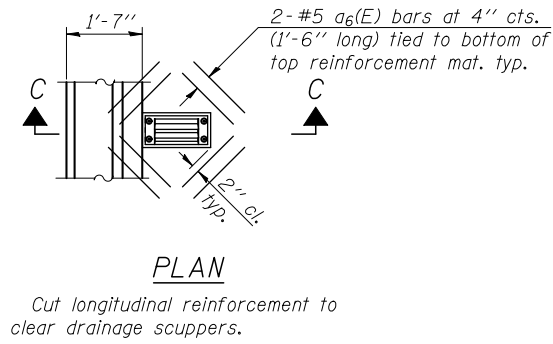
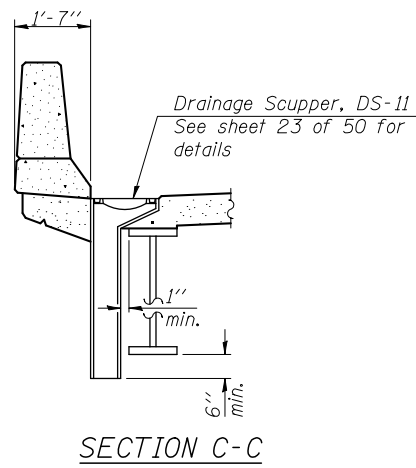
ROUTE NO.	SECTION	COUNTY	TOTAL SHEETS	SHEET NO.
F.A.U. 7706	23(B-1)	LOGAN	179	102
FED. ROAD DIST. NO. 7	ILLINOIS	FED. AID PROJECT-		

Contract #72789

SUPERSTRUCTURE
BILL OF MATERIAL

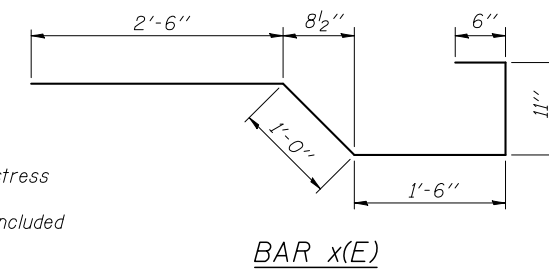
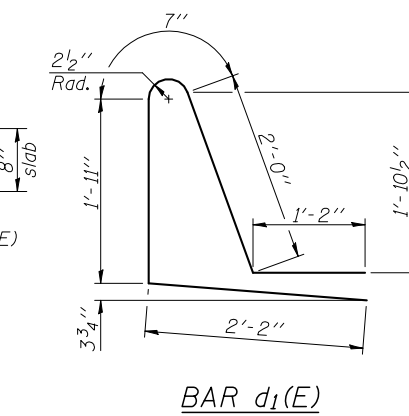
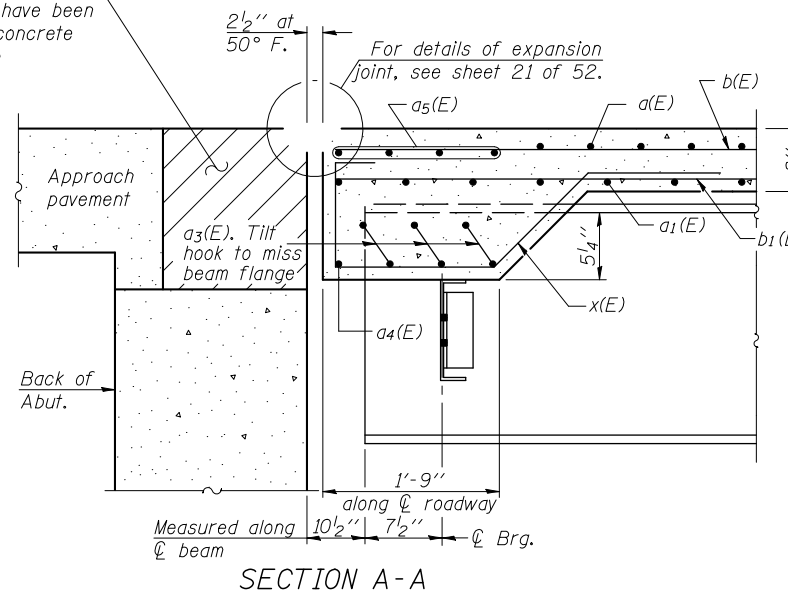
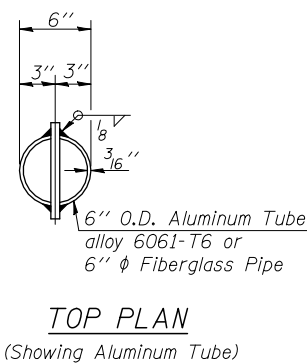
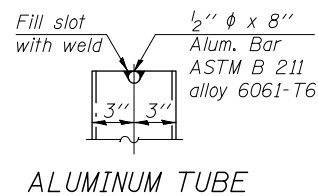
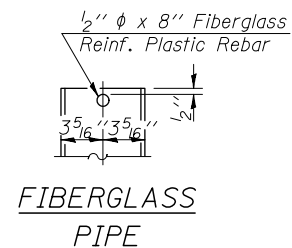
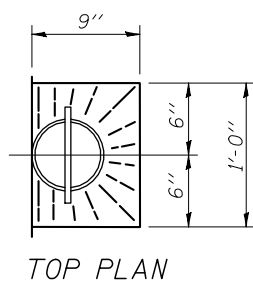
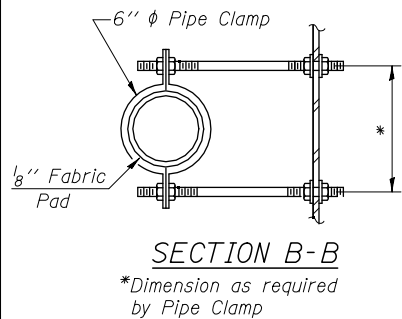
Bar	No.	Size	Length	Shape
a(E)	3,837	#5	31'-10"	—
a ₁ (E)	3,136	#5	24'-9"	—
a ₂ (E)	2,558	#6	6'-0"	—
a ₃ (E)	33	#6	8'-7"	—
a ₄ (E)	3	#6	32'-3"	—
a ₅ (E)	12	#7	33'-1"	—
a ₆ (E)	48	#5	1'-6"	—
b(E)	1,932	#5	31'-1"	—
b ₁ (E)	534	#6	26'-7"	—
b ₂ (E)	534	#6	24'-7"	—
b ₃ (E)	1,826	#5	29'-10"	—
d(E)	1,268	#5	5'-7"	—
d ₁ (E)	1,268	#5	7'-10"	—
e(E)	70	#4	18'-1"	—
e ₁ (E)	70	#4	16'-4"	—
e ₂ (E)	35	#4	16'-9"	—
e ₃ (E)	70	#4	17'-7"	—
e ₄ (E)	70	#4	15'-10"	—
e ₅ (E)	35	#4	16'-3"	—
e ₆ (E)	64	#4	19'-9"	—
e ₇ (E)	64	#4	17'-9"	—
e ₈ (E)	20	#4	24'-6"	—
e ₉ (E)	20	#4	23'-10"	—
e ₁₀ (E)	15	#8	34'-2"	—
e ₁₁ (E)	8	#8	19'-9"	—
e ₁₂ (E)	8	#8	17'-9"	—
e ₁₃ (E)	15	#8	33'-3"	—
x(E)	77	#5	6'-5"	—
Reinforcement Bars, Epoxy Coated	Pound		421,310	
Concrete Superstructure	Cu. Yds.		1,491.5	

Bars indicated thus 1 x 3-#8 etc. indicates 1 line of bars with 3 lengths per line.

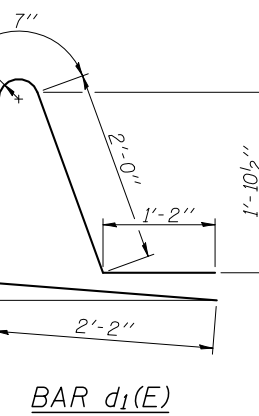


Notes:
Drains shall be located clear of all diaphragms.
Floor drains need not be painted.
Fiberglass pipe shall conform to ASTM D 2996, with short-time rupture strength hoop tensile stress of 30,000 p.s.i. minimum.
Galvanize clamping device according to AASHTO M232. Cost of clamping device and inserts is included with Floor Drains.

Hatched area to be poured after superstructure forms have been removed. Quantity of concrete included with Concrete Superstructure.



BAR x(E)



BAR d1(E)

DESIGNED	JJD
CHECKED	EML
DRAWN	JJD
CHECKED	EML

HORNER & SHIFRIN, INC.
ENGINEERS

SUPERSTRUCTURE DETAILS
F.A.U. ROUTE 7706 - SECTION 23(B-1)
LOGAN COUNTY
STATION 99+46.00
STRUCTURE NO. 054-0512