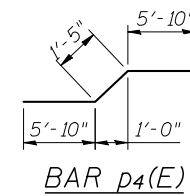
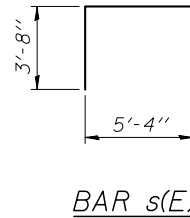


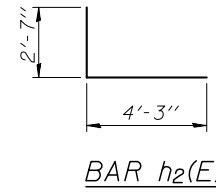
Contract #72789



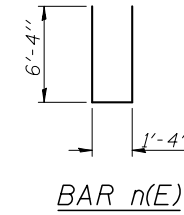
BAR p4(E)



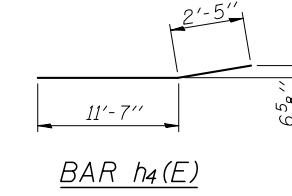
BAR s(E)



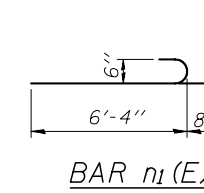
BAR h2(E)



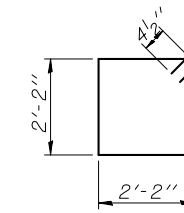
BAR n(E)



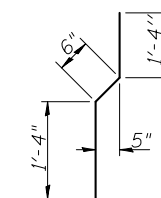
BAR h4(E)



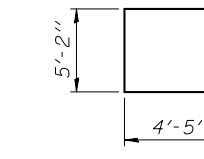
BAR n1(E)



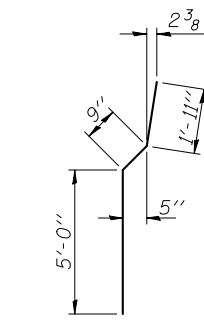
BAR s1(E)



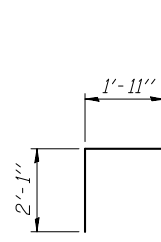
BAR v1(E)



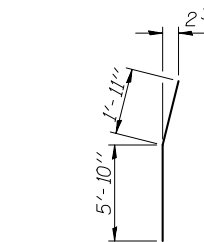
BAR u(E)



BAR v5(E)



BAR v(E)



BAR v6(E)

TWO ABUTMENTS
BILL OF MATERIAL

Bar	No.	Size	Length	Shape
h(E)	48	#5	31'-0"	—
h1(E)	30	#6	31'-6"	—
h2(E)	48	#5	6'-10"	└
h3(E)	48	#4	14'-0"	—
h4(E)	32	#4	14'-1"	—
n(E)	48	#6	14'-0"	└
n1(E)	24	#6	7'-0"	└
p(E)	54	#7	33'-7"	—
p1(E)	10	#7	36'-9"	—
p2(E)	10	#7	42'-4"	—
p3(E)	10	#7	19'-3"	—
p4(E)	20	#7	13'-1"	—
p5(E)	24	#7	17'-8"	—
s(E)	464	#5	12'-8"	└
s1(E)	60	#4	9'-5"	└
u(E)	16	#6	14'-0"	└
v(E)	174	#5	4'-0"	└
v1(E)	174	#4	3'-2"	└
v2(E)	174	#5	7'-6"	—
v3(E)	174	#5	5'-10"	—
v4(E)	60	#6	7'-6"	—
v5(E)	48	#6	7'-8"	—
v6(E)	12	#6	7'-9"	—
Structure Excavation		Cu. Yd.	274	
Concrete Structures		Cu. Yd.	271.4	
Reinforcement Bars, Epoxy Coated		Pound	24,170	
Furnishing Steel Piles, HP12x53		Foot	1408	
Driving Piles		Foot	1408	
Test Pile, Steel HP12x53		Each	2	
Concrete Encasement		Cu. Yd.	11.9	
Concrete Sealer		Sq. Ft.	1974	

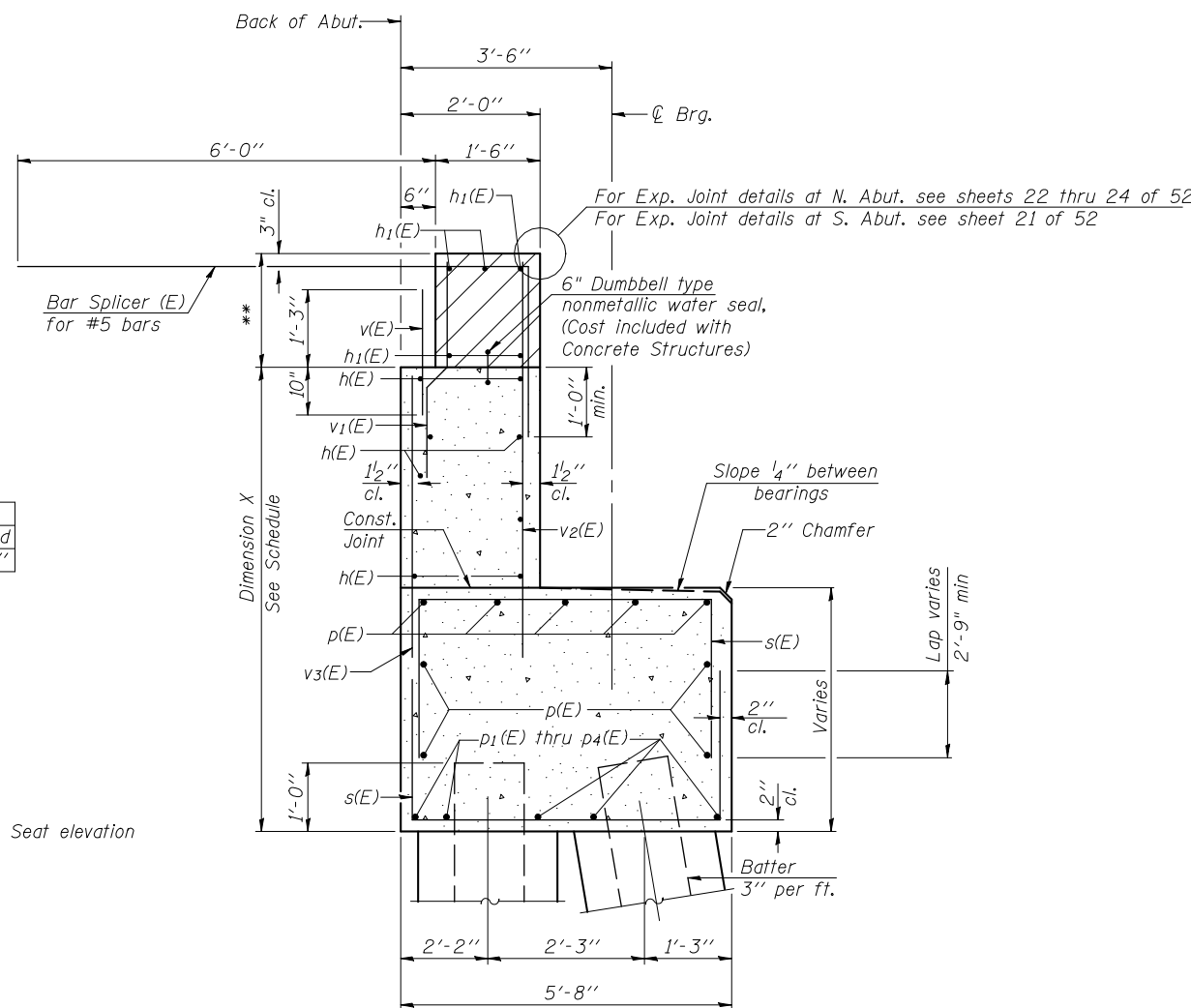
For details of piles and Concrete Encasement, see sheet 45 of 52.
For details of Bar Splicers, see sheet 46 of 52.

ABUTMENT DETAILS
F.A.U. ROUTE 7706 - SECTION 23(B-1)
LOGAN COUNTY
STATION 99+46.00
STRUCTURE NO. 054-0512

DIMENSION X SCHEDULE

North Abutment		South Abutment	
West End	East End	East End	West End
7'-9 1/8"	8'-2 1/8"	8'-4 5/8"	7'-11 1/8"

*Construction Joint elevation = Seat elevation
**1'-7 1/2" N. Abut.
1'-6" S. Abut.



SEC. THRU ABUT.

DESIGNED	CME
CHECKED	GJB
DRAWN	TFG
CHECKED	MCB

COOMBE-BLOXDORF P.C.
Engineers / Land Surveyors
Springfield, Illinois
Design Firm License No. 184-002708