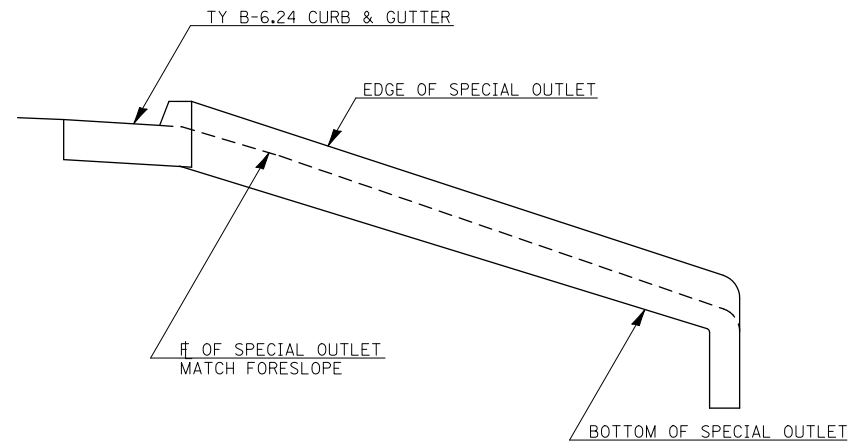
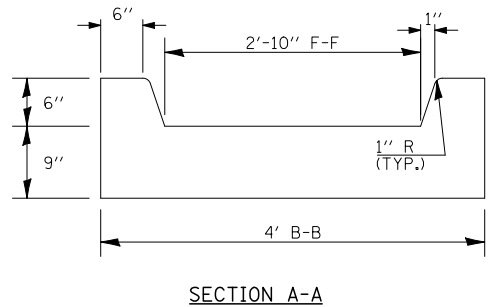


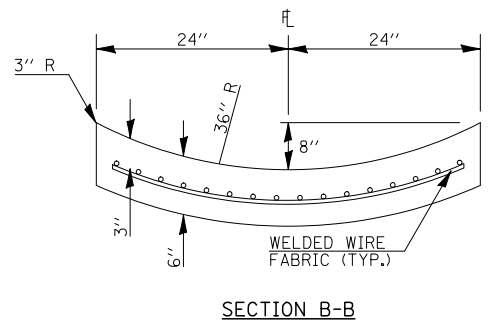
SHIFT LOCATION OF OUTLET IN FIELD IF POSSIBLE TO AVOID GUARDRAIL POSTS MODIFY CURB & GUTTER SLOPE TO ENSURE DRAINAGE OF THE LOW POINT.



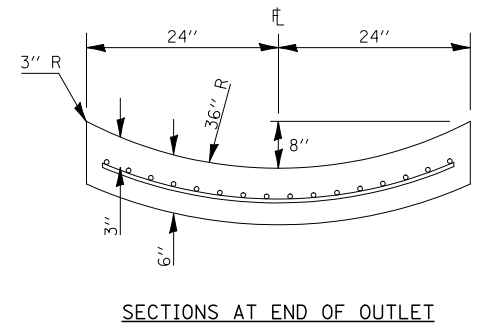
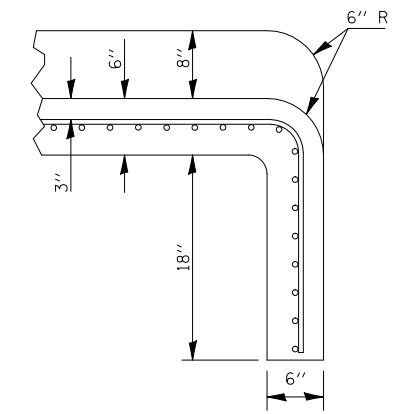
PROFILE



SECTION A-A



SECTION B-B



SECTIONS AT END OF OUTLET

OUTLET SPECIAL  
BL 55  
STA 94+91.00 RT

LAST SAVED = 5/23/2013  
PEN TABLE = 1/24/14 (14)  
PLOT DRIVER = TR-18pdf-Block-Half.plt

FILE NAME =	USER NAME = jepettibone	DESIGNED -	REVISED -
1:\06103\cad\1\plans\029.D672789-Sht-Details-Misc.dgn		DRAWN -	REVISED -
	PLOT SCALE = 100.0000' / IN.	CHECKED -	REVISED -
	PLOT DATE = 5/23/2013 10:41:05 AM	DATE -	REVISED -

**STATE OF ILLINOIS  
DEPARTMENT OF TRANSPORTATION**

**MISCELLANEOUS DETAILS  
OUTLET SPECIAL**

SCALE: NONE SHEET NO. 5 OF 8 SHEETS STA. TO STA.

F.A.U. RTE.	SECTION	COUNTY	TOTAL SHEETS	SHEET NO.
7706	23(B-1)	LOGAN	179	141
BUS. LOOP 55 OVER SALT CREEK			CONTRACT NO. 72789	
FED. ROAD DIST. NO.		ILLINOIS FED. AID PROJECT		