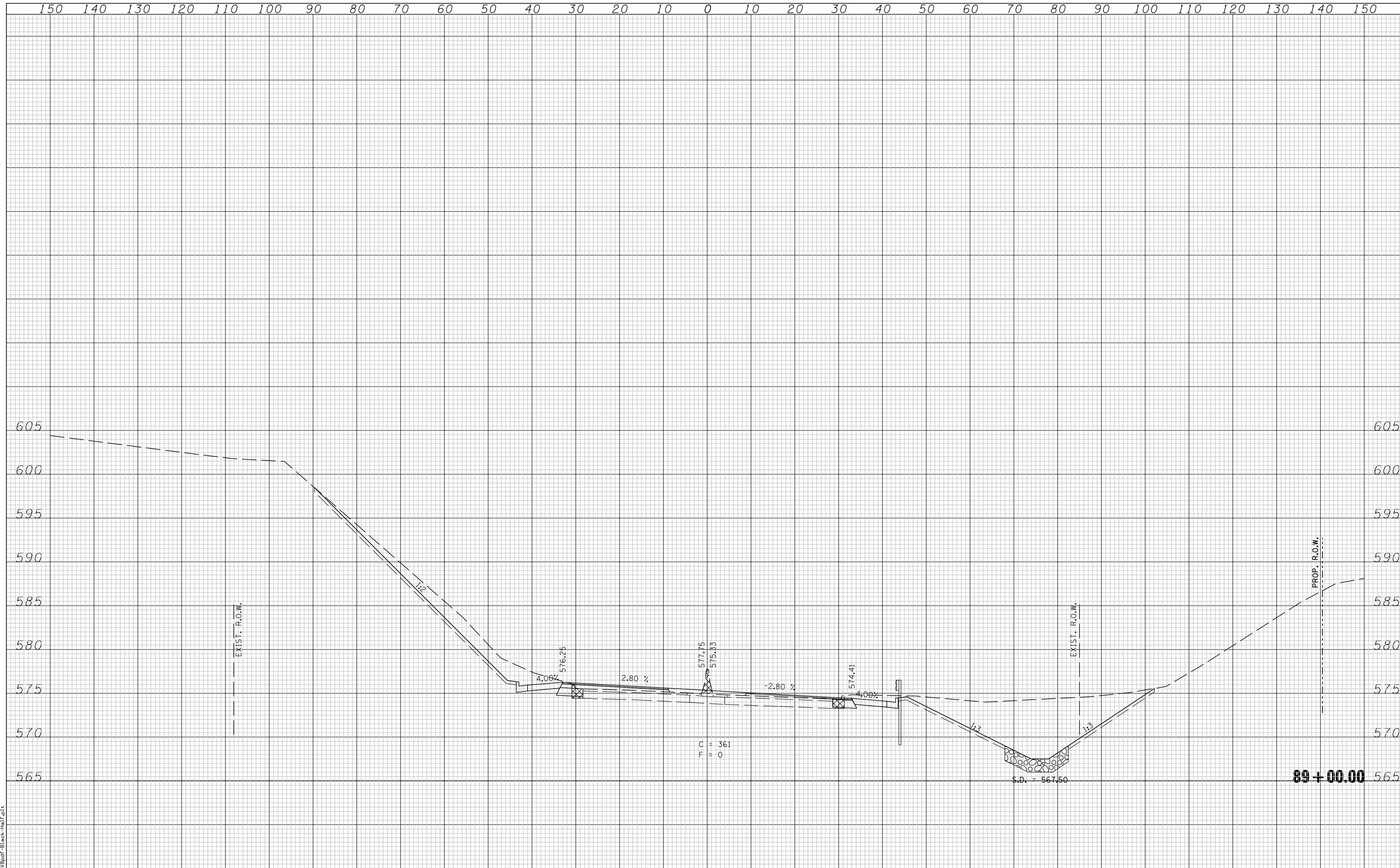


DATE	
BY	
SURVEYED	
PLOTTED	
TEMPLATE	
AREAS	
CHECKED	
FINAL	
SURVEY	
NOTE BOOK	
NO.	

DATE	
BY	
SURVEYED	
PLOTTED	
TEMPLATE	
AREAS	
CHECKED	
ORIGINAL	
SURVEY	
NOTE BOOK	
NO.	



LAST SAVED = 5/23/2013
 PEN TABLE = 10-hair-103
 PLOT DRIVER = prt3dprt_black_half.plt

FILE NAME =	USER NAME = jepettibone	DESIGNED -	REVISIED -	STATE OF ILLINOIS DEPARTMENT OF TRANSPORTATION	CROSS SECTIONS - BUSINESS LOOP 55			F.A.U. RTE.	SECTION	COUNTY	TOTAL SHEETS	SHEET NO.
h:\06103\cad\1\plans\097_0672789-Sht-XSht-Bus55.dgn	DRAWN -	REVISIED -	7706					23(B-1)	LOGAN	179	152	
PLOT SCALE = 20.0000' / IN.	CHECKED -	REVISIED -	BUS. LOOP 55 OVER SALT CREEK					CONTRACT NO. 72789				
PLOT DATE = 5/23/2013 10:41:13 AM	DATE -	REVISIED -	FED. ROAD DIST. NO. ILLINOIS FED. AID PROJECT									
SCALE: 1"=10'H 5'V				SHEET NO. 8 OF 33 SHEETS		STA. 89+00.00 TO STA. 89+00.00						