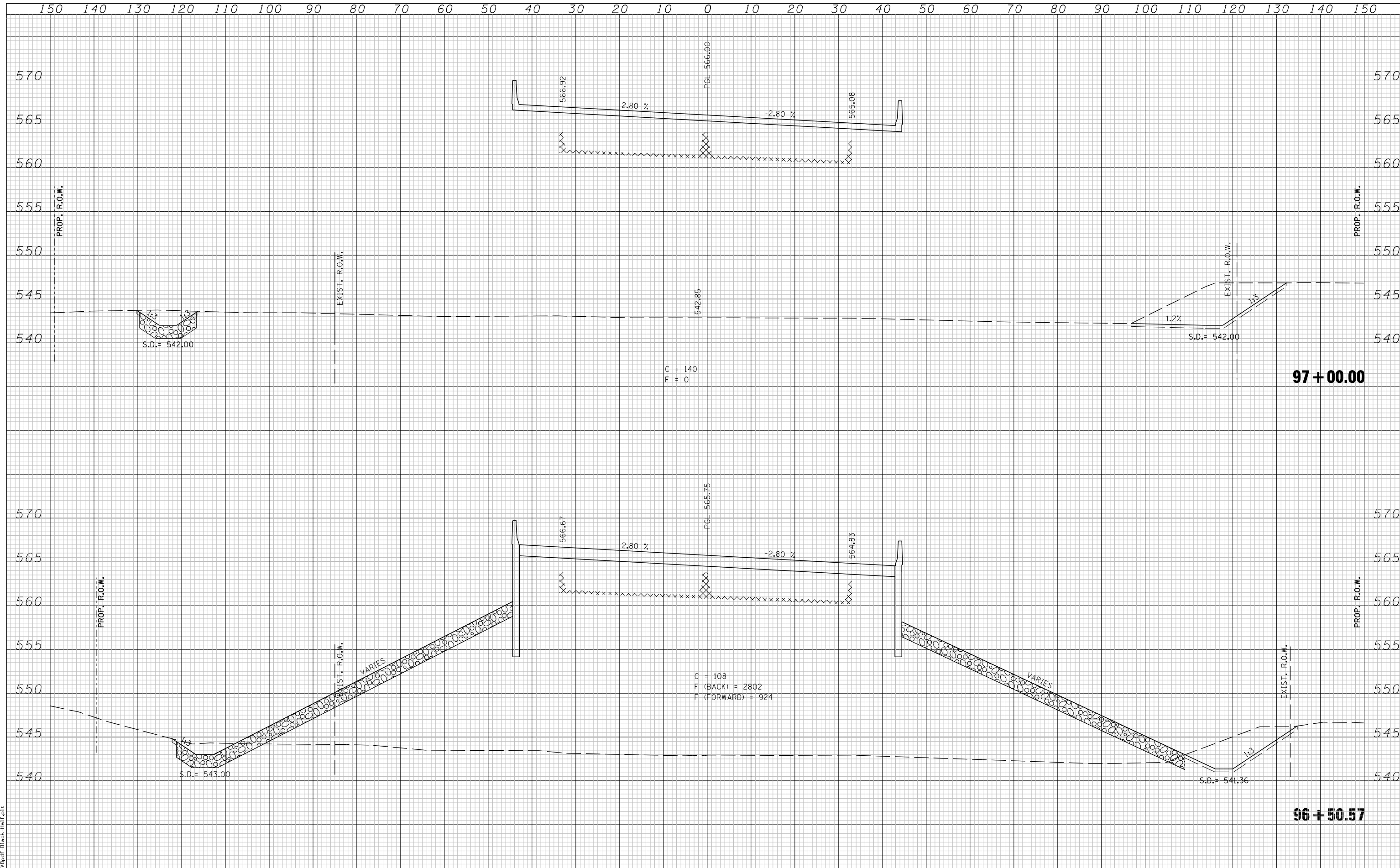


DATE	
BY	
FINISHED SURVEY	
PLOTTED	
TEMPLATE	
NOTE BOOK	
AREAS CHECKED	
NO.	

DATE	
BY	
ORIGINAL SURVEY	
PLOTTED	
TEMPLATE	
NOTE BOOK	
AREAS CHECKED	
NO.	



LAST SAVED = 5/23/2013
 PEN TABLE = 10-Half-103
 PLOT DRIVER = P:\103\PlotBlackHalf.plt

FILE NAME =	USER NAME = jepettibone	DESIGNED -	REVISD -	F.A.U. RTE. = 7706	SECTION = 23(B-1)	COUNTY = LOGAN	TOTAL SHEETS = 179	SHEET NO. = 158
h:\06103\cad\1\plans\097_0672789-Sht-XSht-Bus55.dgn		DRAWN -	REVISD -	BUS. LOOP 55 OVER SALT CREEK CONTRACT NO. 72789				
PLOT SCALE = 20.0000' / IN.		CHECKED -	REVISD -	FED. ROAD DIST. NO. ILLINOIS FED. AID PROJECT				
PLOT DATE = 5/23/2013 10:41:16 AM		DATE -	REVISD -	SCALE: 1"=10'H 5'V SHEET NO. 14 OF 33 SHEETS STA. 96+50.07 TO STA. 97+00.00				

STATE OF ILLINOIS
 DEPARTMENT OF TRANSPORTATION

CROSS SECTIONS - BUSINESS LOOP 55