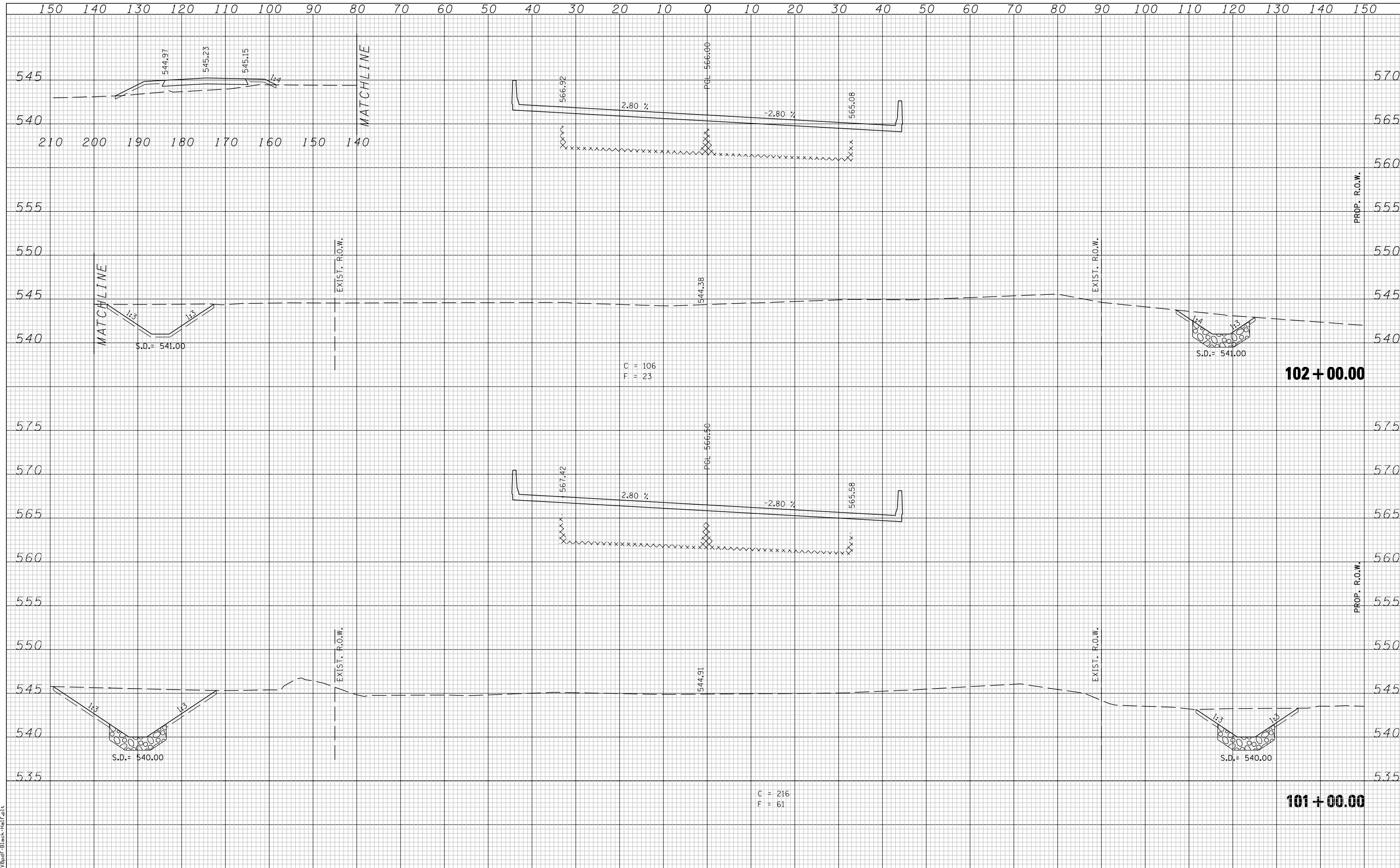


DATE	
BY	
FINAL SURVEY	SURVEYED
NOTE BOOK	PLOTTED
NO.	TEMPLATE
	AREAS CHECKED

DATE	
BY	
ORIGINAL SURVEY	SURVEYED
NOTE BOOK	PLOTTED
NO.	TEMPLATE
	AREAS CHECKED



LAST SAVED = 5/23/2013
 PLOT DATE = 5/23/2013 10:41:19 AM
 PLOT DRIVER = P:\2013\Black-Half.plt

FILE NAME =	USER NAME = jepettibone	DESIGNED -	REVISIED -
h:\06103\cad\1\plans\097_0672789-Sht-XSSht-Bus55.dgn		DRAWN -	REVISIED -
		CHECKED -	REVISIED -
		DATE -	REVISIED -

**STATE OF ILLINOIS
 DEPARTMENT OF TRANSPORTATION**

CROSS SECTIONS - BUSINESS LOOP 55

SCALE: 1"=10'H 5'V SHEET NO. 18 OF 33 SHEETS STA. 101+00.00 TO STA. 101+00.00

F.A.U. RTE.	SECTION	COUNTY	TOTAL SHEETS	SHEET NO.
7706	23(B-1)	LOGAN	179	162
BUS. LOOP 55 OVER SALT CREEK			CONTRACT NO. 72789	
FED. ROAD DIST. NO.		ILLINOIS FED. AID PROJECT		