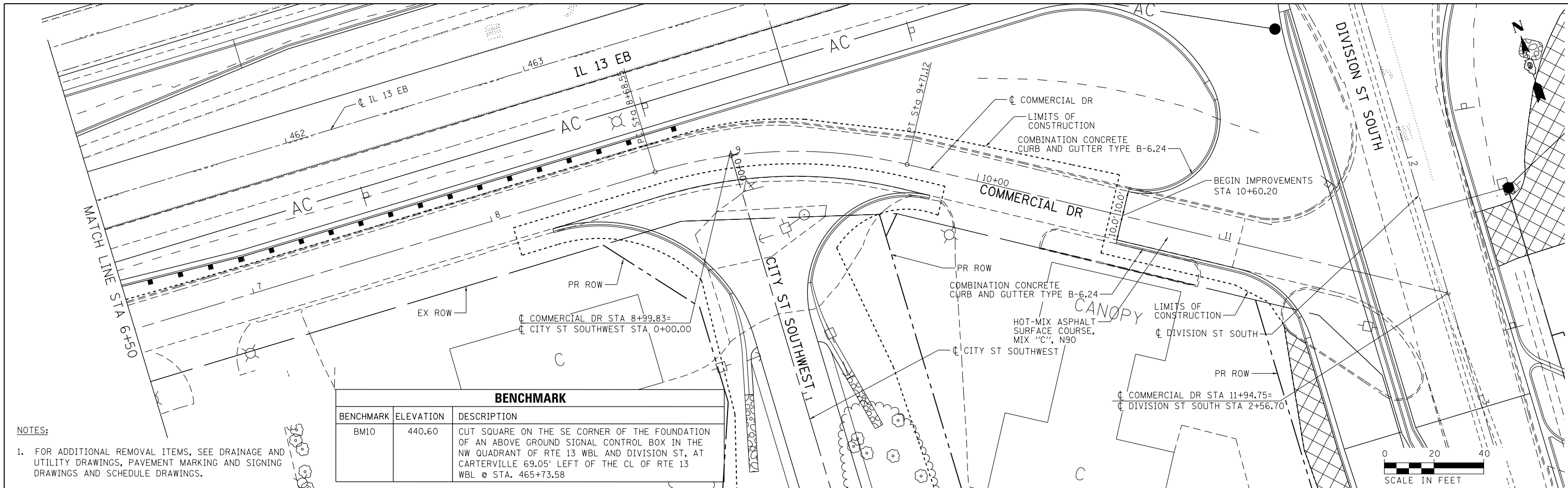


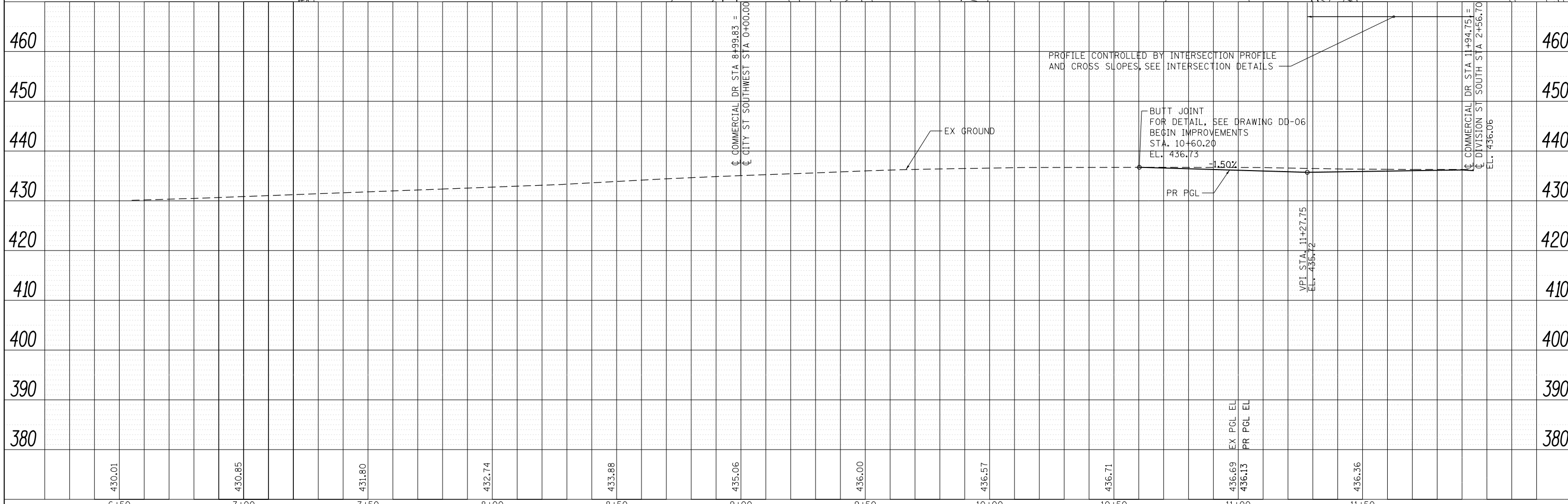
PLAN	SURVEYED	DATE
	PLOTTED	BY
	ALIGNED	CHECKED
	NOTED	FILE NAME
	NO.	

PROFILE	SURVEYED	DATE
	PLOTTED	BY
	GRADES CHECKED	
	STRUCTURE NOTATIONS CHECKED	
	NO.	



BENCHMARK		
BENCHMARK	ELEVATION	DESCRIPTION
BM10	440.60	CUT SQUARE ON THE SE CORNER OF THE FOUNDATION OF AN ABOVE GROUND SIGNAL CONTROL BOX IN THE NW QUADRANT OF RTE 13 WBL AND DIVISION ST, AT CARTERVILLE 69.05' LEFT OF THE CL OF RTE 13 WBL @ STA. 465+73.58

NOTES:
 1. FOR ADDITIONAL REMOVAL ITEMS, SEE DRAINAGE AND UTILITY DRAWINGS, PAVEMENT MARKING AND SIGNING DRAWINGS AND SCHEDULE DRAWINGS.



FILE NAME = D978258-sh1-plnprf-07.dgn	USER NAME = mfox	DESIGNED - KN	REVISED -	STATE OF ILLINOIS DEPARTMENT OF TRANSPORTATION	ROADWAY PLAN AND PROFILE COMMERCIAL DRIVE	F.A.P. RTE. 331	SECTION (1-4)R-2, N-4, TS-4	COUNTY WILLIAMSON	TOTAL SHEETS 381	SHEET NO. 103	
CH2MHILL	PLOT SCALE = 40.0001" / 1"	DRAWN - AS	REVISED -			SCALE:	SHEET NO. 7 OF 32 SHEETS	STA. 6+50.00	TO STA. 11+94.75	DRAWING NO. PL-07	CONTRACT NO. 78258
	PLOT DATE = 1/31/2013	CHECKED -	REVISED -			ILLINOIS FED. AID PROJECT					
		DATE -	REVISED -								