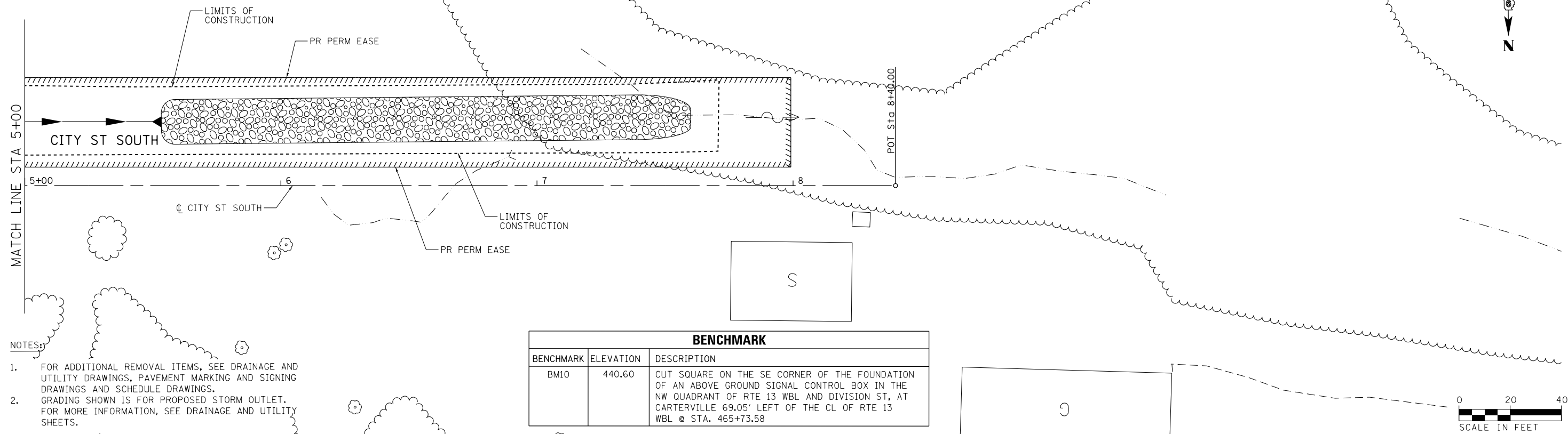


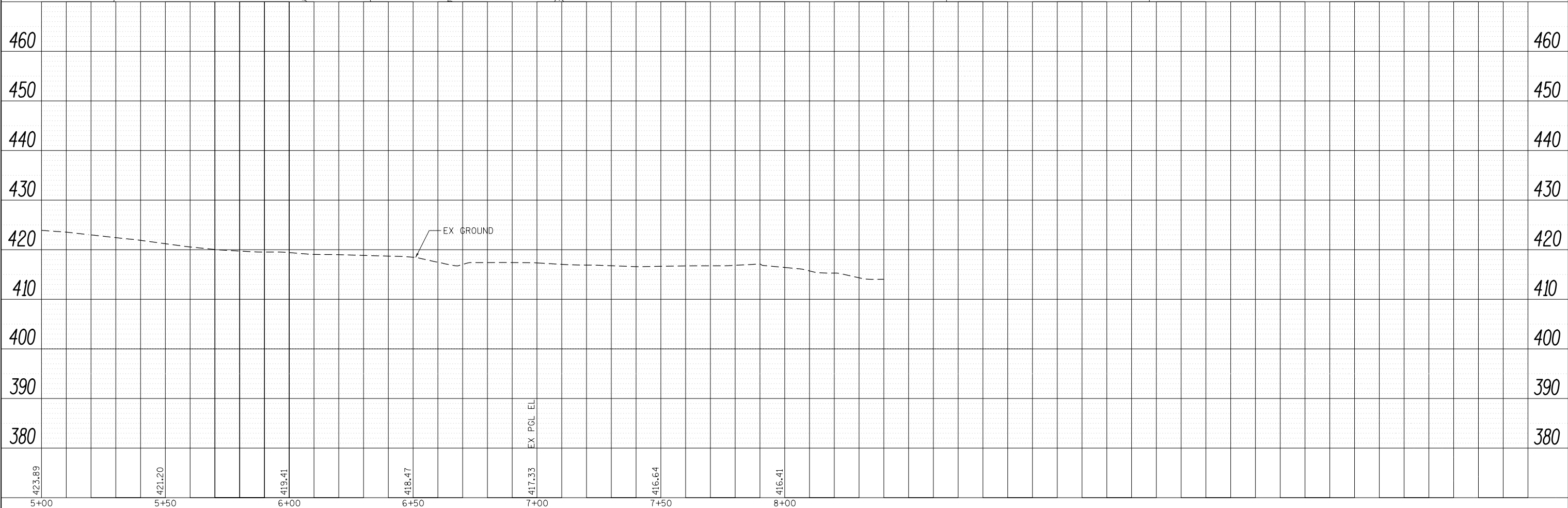
PLAN	SURVEYED	DATE
	PLOTTED	
	ALIGNED	
	CHECKED	
	FILED	
NOTE BOOK NO.	FILE NAME	

PROFILE	SURVEYED	DATE
	PLOTTED	
	GRADES CHECKED	
	STRUCTURE NOTATIONS CHECKED	
NOTE BOOK NO.	FILE NAME	



- NOTES:
- FOR ADDITIONAL REMOVAL ITEMS, SEE DRAINAGE AND UTILITY DRAWINGS, PAVEMENT MARKING AND SIGNING DRAWINGS AND SCHEDULE DRAWINGS.
  - GRADING SHOWN IS FOR PROPOSED STORM OUTLET. FOR MORE INFORMATION, SEE DRAINAGE AND UTILITY SHEETS.

BENCHMARK		
BENCHMARK	ELEVATION	DESCRIPTION
BM10	440.60	CUT SQUARE ON THE SE CORNER OF THE FOUNDATION OF AN ABOVE GROUND SIGNAL CONTROL BOX IN THE NW QUADRANT OF RTE 13 WBL AND DIVISION ST, AT CARTERVILLE 69.05' LEFT OF THE CL OF RTE 13 WBL @ STA. 465+73.58



FILE NAME = D978258-sh1-plnprf-12.dgn  
**CH2MHILL**

USER NAME = mfox	DESIGNED - KN	REVISED -
	DRAWN - AS	REVISED -
PLOT SCALE = 40.0000' / in.	CHECKED -	REVISED -
PLOT DATE = 1/31/2013	DATE -	REVISED -

**STATE OF ILLINOIS**  
**DEPARTMENT OF TRANSPORTATION**

**ROADWAY PLAN AND PROFILE**  
**CITY STREET SOUTH**  
 SCALE: SHEET NO. 12 OF 32 SHEETS STA. 5+00.00 TO STA. 8+40.00

F.A.P. RTE.	SECTION	COUNTY	TOTAL SHEETS	SHEET NO.
331	(1-4)R-2, N-4, TS-4	WILLIAMSON	381	108
DRAWING NO. PL-12			CONTRACT NO. 78258	
ILLINOIS FED. AID PROJECT				