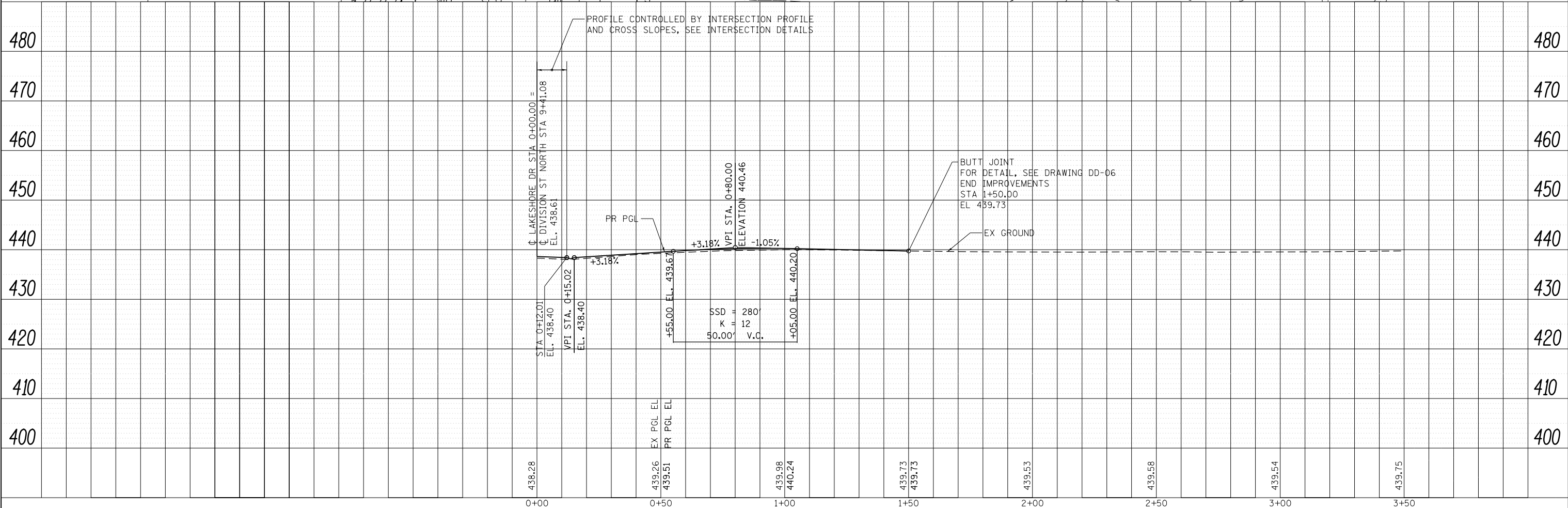
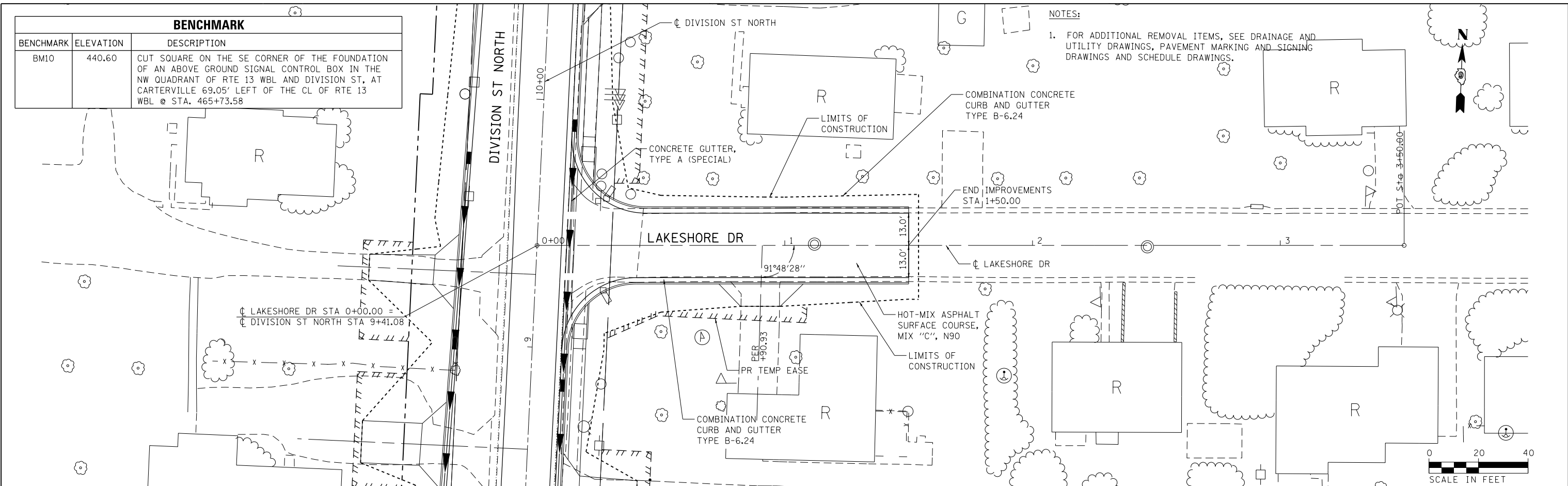


PLAN	SURVEYED	DATE
	PLOTTED	
	ALIGNED	
	CHECKED	
	FILED	
	CARD	
	FILE	
	NAME	
	NO.	

PROFILE	SURVEYED	DATE
	PLOTTED	
	GRADES	
	CHECKED	
	STRUCTURE	
	NOTATIONS	
	CHKD	
	NO.	

BENCHMARK		
BENCHMARK	ELEVATION	DESCRIPTION
BM10	440.60	CUT SQUARE ON THE SE CORNER OF THE FOUNDATION OF AN ABOVE GROUND SIGNAL CONTROL BOX IN THE NW QUADRANT OF RTE 13 WBL AND DIVISION ST, AT CARTERVILLE 69.05' LEFT OF THE CL OF RTE 13 WBL @ STA. 465+73.58

NOTES:  
1. FOR ADDITIONAL REMOVAL ITEMS, SEE DRAINAGE AND UTILITY DRAWINGS, PAVEMENT MARKING AND SIGNING DRAWINGS AND SCHEDULE DRAWINGS.



FILE NAME = D:\978258-sh1-plnprf-22.dgn	USER NAME = mfox	DESIGNED - KN	REVISED -	<b>STATE OF ILLINOIS DEPARTMENT OF TRANSPORTATION</b>	<b>ROADWAY PLAN AND PROFILE LAKESHORE DRIVE</b>		F.A.P. RTE. 331	SECTION (1-4)R-2, N-4, TS-4	COUNTY WILLIAMSON	TOTAL SHEETS 381	SHEET NO. 118
<b>CH2MHILL</b>	PLOT SCALE = 40.0000' / in.	DRAWN - AS	REVISED -		SCALE:	SHEET NO. 22 OF 32 SHEETS	STA. 0+00.00 TO STA. 1+50.00	DRAWING NO. PL-22		CONTRACT NO. 78258	ILLINOIS FED. AID PROJECT
	PLOT DATE = 1/31/2013	CHECKED -	REVISED -								
		DATE -	REVISED -								