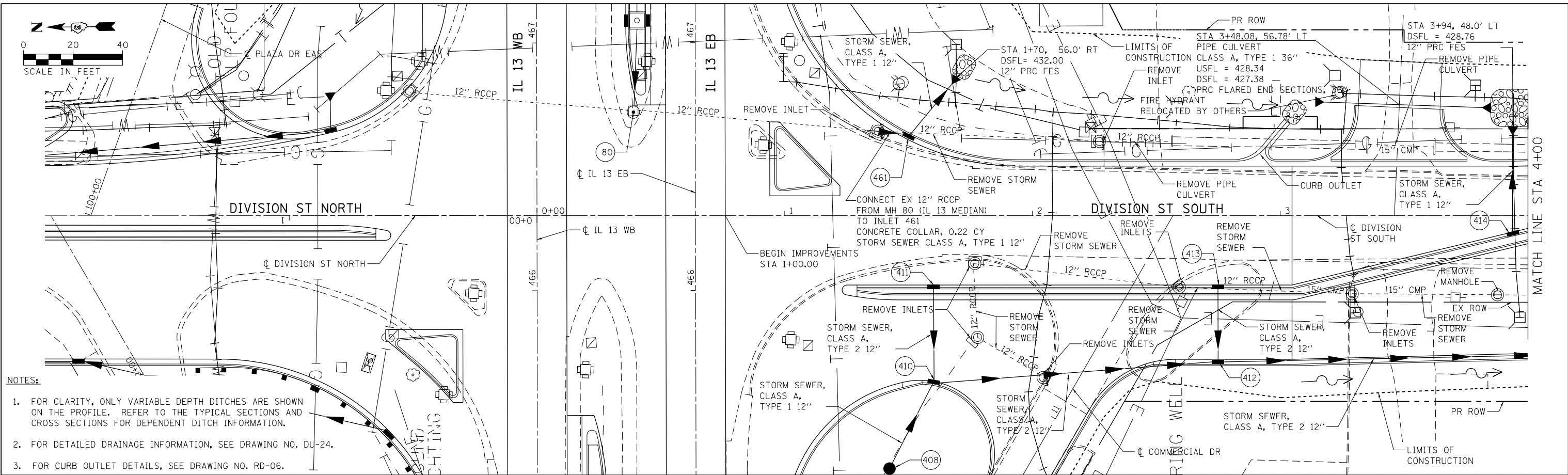
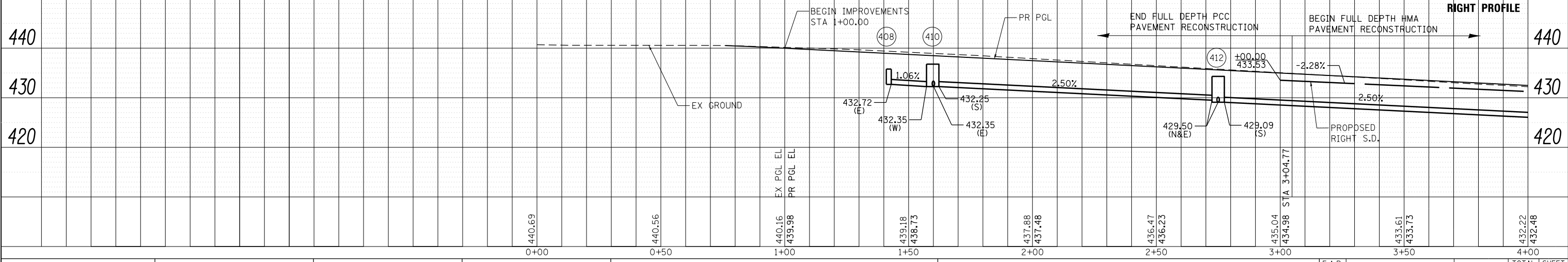
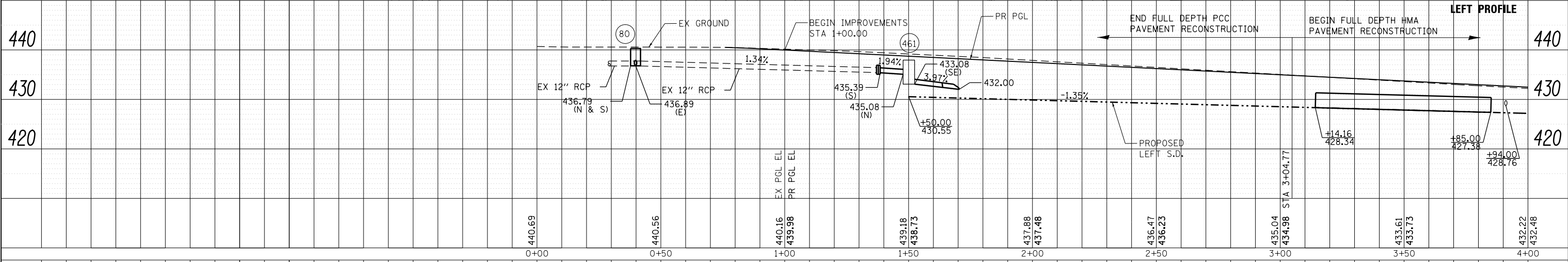


PLAN	SURVEYED	DATE
	PLOTTED	
	ALIGNED	
	CHECKED	
	FILED	
	NO.	



- NOTES:
- FOR CLARITY, ONLY VARIABLE DEPTH DITCHES ARE SHOWN ON THE PROFILE. REFER TO THE TYPICAL SECTIONS AND CROSS SECTIONS FOR DEPENDENT DITCH INFORMATION.
 - FOR DETAILED DRAINAGE INFORMATION, SEE DRAWING NO. DU-24.
 - FOR CURB OUTLET DETAILS, SEE DRAWING NO. RD-06.

PROFILE	SURVEYED	DATE
	PLOTTED	
	GRADES	
	CHECKED	
	STRUCTURE	
	NOTATIONS	
	CHKD	
	NO.	



FILE NAME = D978258-shd-drain-17.dgn
CH2MHILL

USER NAME = mfox	DESIGNED -	REVISED -
	CHECKED -	REVISED -
PLOT SCALE = 40.0000' / in.	DRAWN -	REVISED -
PLOT DATE = 3/11/2013	CHECKED -	REVISED -

**STATE OF ILLINOIS
DEPARTMENT OF TRANSPORTATION**

**DRAINAGE AND UTILITY PLANS
DIVISION STREET SOUTH**

F.A.P. RTE. 331	SECTION (1-4IR-2, N-4, TS-4)	COUNTY WILLIAMSON	TOTAL SHEETS 381	SHEET NO. 178
DRAWING NO. DU-23			CONTRACT NO. 78258	
ILLINOIS FED. AID PROJECT				

SCALE: SHEET 23 OF 43 SHEETS STA. 0+00.00 TO STA. 4+00.00