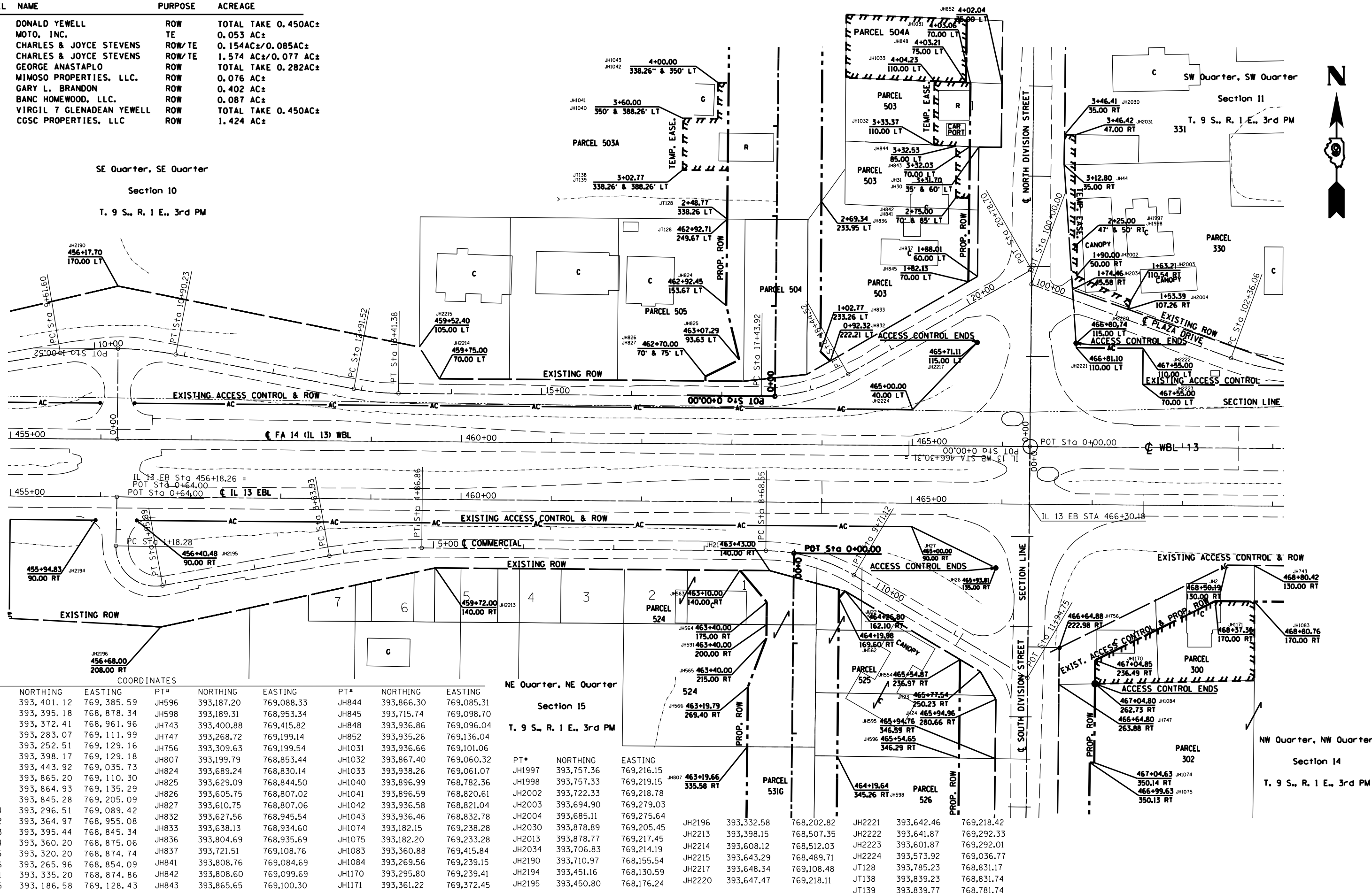


PARCEL	NAME	PURPOSE	ACREAGE
300	DONALD YEWELL	ROW	TOTAL TAKE 0.450AC±
330	MOTO, INC.	TE	0.053 AC±
503	CHARLES & JOYCE STEVENS	ROW/TE	0.154AC±/0.085AC±
503A	CHARLES & JOYCE STEVENS	ROW/TE	1.574 AC±/0.077 AC±
504	GEORGE ANASTAPLO	ROW	TOTAL TAKE 0.282AC±
505	MIMOSO PROPERTIES, LLC.	ROW	0.076 AC±
524	GARY L. BRANDON	ROW	0.402 AC±
525	BANC HOMEWOOD, LLC.	ROW	0.087 AC±
526	VIRGIL 7 GLENADEAN YEWELL	ROW	TOTAL TAKE 0.450AC±
302	CGSC PROPERTIES, LLC	ROW	1.424 AC±

SE Quarter, SE Quarter
Section 10
T. 9 S., R. 1 E., 3rd PM



NE Quarter, NE Quarter
Section 15
T. 9 S., R. 1 E., 3rd PM

COORDINATES					
PT#	NORTHING	EASTING	PT#	NORTHING	EASTING
JH2	393,401.12	769,385.59	JH596	393,187.20	769,088.33
JH21	393,395.18	768,878.34	JH598	393,189.31	768,953.34
JH22	393,372.41	768,961.96	JH743	393,400.88	769,415.82
JH23	393,283.07	769,111.99	JH747	393,268.72	769,199.14
JH24	393,252.51	769,129.16	JH756	393,309.63	769,199.54
JH26	393,398.17	769,129.18	JH807	393,199.79	768,853.44
JH27	393,443.92	769,035.73	JH824	393,689.24	768,830.14
JH30	393,865.20	769,110.30	JH825	393,629.09	768,844.50
JH31	393,864.93	769,135.29	JH826	393,605.75	768,807.02
JH44	393,845.28	769,205.09	JH827	393,610.75	768,807.06
JH554	393,296.51	769,089.42	JH832	393,627.56	768,945.54
JH562	393,364.97	768,955.08	JH833	393,638.13	768,934.60
JH563	393,395.44	768,845.34	JH836	393,804.69	768,935.69
JH564	393,360.20	768,875.06	JH837	393,721.51	769,108.76
JH565	393,320.20	768,874.74	JH841	393,808.76	769,084.69
JH566	393,265.96	768,854.09	JH842	393,808.60	769,099.69
JH591	393,335.20	768,874.86	JH843	393,865.65	769,100.30
JH595	393,186.58	769,128.43			

PT#	NORTHING	EASTING	PT#	NORTHING	EASTING
JH844	393,866.30	769,085.31	JH1997	393,757.36	769,216.15
JH845	393,715.74	769,098.70	JH1998	393,757.33	769,219.15
JH848	393,936.86	769,096.04	JH2002	393,722.33	769,218.78
JH852	393,935.26	769,136.04	JH2003	393,694.90	769,279.03
JH1031	393,936.66	769,101.06	JH2004	393,685.11	769,275.64
JH1032	393,867.40	769,060.32	JH2013	393,878.89	769,205.45
JH1033	393,938.26	769,061.07	JH2019	393,710.97	768,155.54
JH1040	393,896.99	768,782.36	JH2194	393,451.16	768,130.59
JH1041	393,896.59	768,820.61	JH2195	393,450.80	768,176.24
JH1042	393,936.58	768,821.04			
JH1043	393,936.46	768,832.78			
JH1074	393,182.15	769,238.28			
JH1075	393,182.20	769,233.28			
JH1083	393,360.88	769,415.84			
JH1084	393,269.56	769,239.15			
JH1170	393,295.80	769,239.41			
JH1171	393,361.22	769,372.45			

JH2196	393,332.58	768,202.82	JH221	393,642.46	769,218.42
JH2213	393,398.15	768,507.35	JH222	393,641.87	769,292.33
JH2214	393,608.12	768,512.03	JH223	393,601.87	769,292.01
JH2215	393,643.29	768,489.71	JH224	393,573.92	769,036.77
JH2217	393,648.34	769,108.48	JT128	393,785.23	768,831.17
JH2220	393,647.47	769,218.11	JT138	393,839.23	768,831.74
			JT139	393,839.77	768,781.74

FILE NAME =	USER NAME = *USER*
*FILE#	
MODELNAME	

DESIGNED -	REVISD -
DRAWN -	REVISD -
CHECKED -	REVISD -
DATE -	REVISD -

STATE OF ILLINOIS
DEPARTMENT OF TRANSPORTATION

R-99-004-03
RIGHT OF WAY PLANS
SCALE: 1" = 100'
SHEET OF SHEETS
STA. 455+00.00 TO STA. 469+00.00

F.A. RTE. 14	SECTION (1-4)R-2N-4,TS-4	COUNTY WILLIAMSON	TOTAL SHEETS 200A	SHEET NO. 200A
CONTRACT NO. 78258				
ILLINOIS FED. AID PROJECT				

FILE NAME =	USER NAME = *USER*
*FILE#	
MODELNAME	