

SW QUARTER, SW QUARTER

SECTION II

T. 9 S., R. 1 E., 3RD P.M.

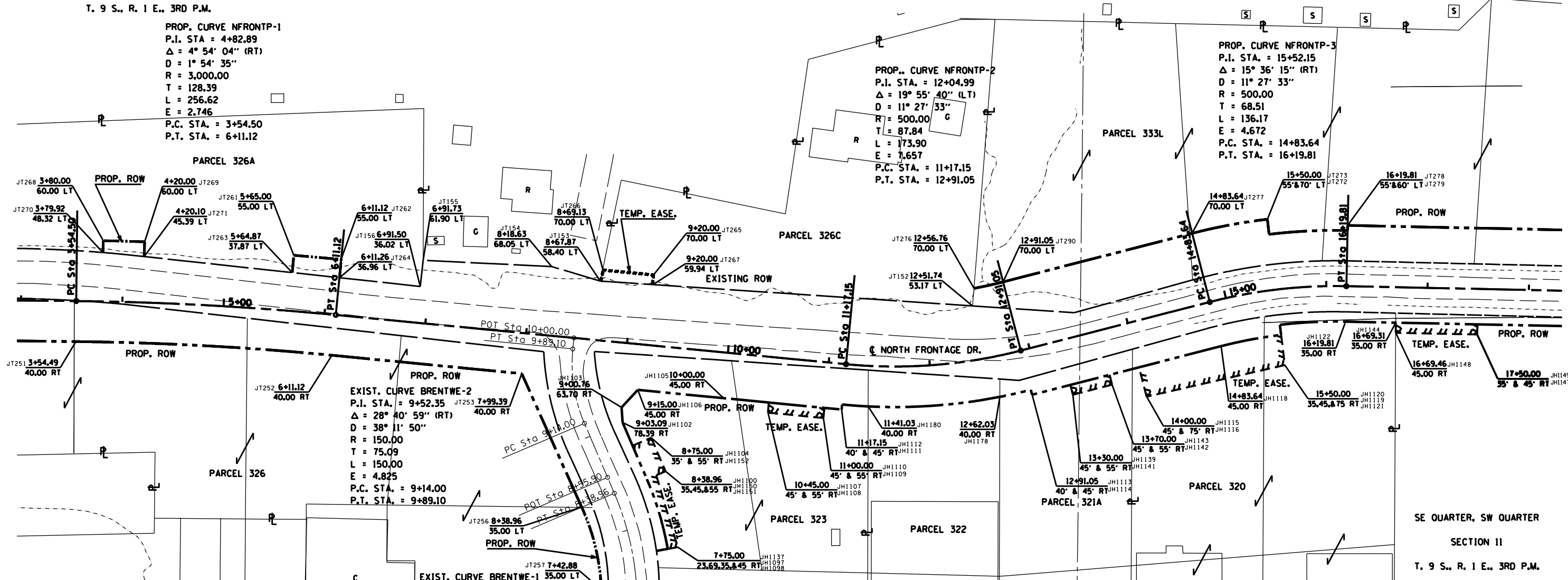
PROP. CURVE NFRONTP-1
 P.I. STA. = 4+82.89
 $\Delta = 4^\circ 54' 04''$ (RT)
 $D = 1^\circ 54' 35''$
 $R = 3,000.00$
 $T = 128.39$
 $L = 256.62$
 $E = 2.746$
 P.C. STA. = 3+54.50
 P.T. STA. = 6+11.12

PARCEL 326A

PROP. CURVE NFRONTP-2
 P.I. STA. = 12+04.99
 $\Delta = 19^\circ 55' 40''$ (LT)
 $D = 11^\circ 27' 33''$
 $R = 500.00$
 $T = 87.84$
 $L = 173.90$
 $E = 7.657$
 P.C. STA. = 11+17.15
 P.T. STA. = 12+91.05

PROP. CURVE NFRONTP-3
 P.I. STA. = 15+52.15
 $\Delta = 15^\circ 36' 15''$ (RT)
 $D = 11^\circ 27' 33''$
 $R = 500.00$
 $T = 68.51$
 $L = 136.17$
 $E = 4.672$
 P.C. STA. = 14+83.64
 P.T. STA. = 16+19.81

PARCEL NAME	PURPOSE	ACREAGE
320 HC DEVELOPMENT, LLC	ROW/TE	0.094/0.102AC±
321A TERY S. BISCHING	ROW/TE	0.053/0.009AC±
322 CAROL L. & TERRY S. BISCHING	ROW	0.087AC±
323 McDONALD'S CORPORATION	ROW/TE	0.278/0.044AC±
326 LAKESHORE HOMES INC.	ROW	0.491AC±
326A LAKESHORE HOMES INC.	ROW	0.031AC±
326C NATHAN & KRISTAL EMRICK	TE	0.013AC±
333L LAKESHORE HOMES INC.	ROW	0.833AC±



EXIST. CURVE BRENTWE-2
 P.I. STA. = 9+52.35
 $\Delta = 28^\circ 40' 59''$ (RT)
 $D = 38^\circ 11' 50''$
 $R = 150.00$
 $T = 75.09$
 $L = 150.00$
 $E = 4.825$
 P.C. STA. = 9+14.00
 P.T. STA. = 9+89.10

EXIST. CURVE BRENTWE-1
 P.I. STA. = 7+81.57
 $\Delta = 23^\circ 50' 20''$ (LT)
 $D = 20^\circ 27' 46''$
 $R = 280.00$
 $T = 59.10$
 $L = 116.50$
 $E = 6.170$
 P.C. STA. = 7+22.46
 P.T. STA. = 8+38.96

COORDINATE LIST

COORDINATE LIST

COORDINATE LIST

COORDINATE LIST

PT #	NORTHING	EASTING	PT #	NORTHING	EASTING
DB29442	393,828.49	770,052.81	JH1121	394,050.21	770,720.43
JH1097	393,868.71	770,111.30	JH1122	394,093.11	770,780.48
JH1098	393,870.46	770,121.14	JH1137	393,866.73	770,100.16
JH1100	393,937.51	770,090.75	JH1139	394,030.63	770,508.76
JH1102	393,993.63	770,066.73	JH1141	394,020.95	770,511.25
JH1103	394,008.46	770,065.82	JH1142	394,030.91	770,549.99
JH1104	393,970.64	770,076.57	JH1143	394,040.59	770,547.50
JH1105	394,017.55	770,166.40	JH1144	394,092.08	770,829.97
JH1106	394,025.71	770,081.79	JH1147	394,080.41	770,910.43
JH1107	394,013.23	770,211.19	JH1148	394,082.08	770,829.92
JH1108	394,003.27	770,210.23	JH1149	394,090.41	770,910.64
JH1109	393,997.99	770,264.98	JH1150	393,941.45	770,099.94
JH1110	393,007.94	770,265.94	JH1151	393,945.38	770,109.14
JH1111	394,006.30	770,283.01	JH1152	393,978.51	770,094.96
JH1112	394,011.27	770,283.49	JH1178	394,018.86	770,439.23
JH1113	394,025.78	770,469.79	JH1180	394,009.41	770,309.21
JH1114	394,020.94	770,471.04	JT152	394,108.62	770,412.27
JH1115	394,048.06	770,576.56	JT153	394,133.16	770,044.82
JH1116	394,019.01	770,584.03	JT154	394,147.50	769,996.73
JH1118	394,068.88	770,657.56	JT155	394,153.57	769,869.82
JH1119	394,080.00	770,716.87	JT156	394,127.83	769,867.10
JH1120	394,089.93	770,715.69	JT251	394,073.40	769,527.03

PT #	NORTHING	EASTING	PT #	NORTHING	EASTING
JT252	394,059.88	769,779.80	JT270	394,161.33	769,553.81
JT253	394,041.80	769,967.19	JT271	394,157.34	769,594.52
JT256	393,909.97	770,026.40	JT272	394,194.19	770,703.23
JT257	393,828.57	770,045.70	JT273	394,179.29	770,705.01
JT261	394,158.59	769,742.14	JT276	394,125.96	770,413.62
JT262	394,154.44	769,788.92	JT277	394,180.26	770,628.93
JT263	394,141.52	769,740.63	JT278	394,183.09	770,782.35
JT264	394,136.47	769,787.33	JT279	394,188.09	770,782.45
JT265	394,139.70	770,097.82	JT290	394,132.32	770,442.41
JT266	394,144.59	770,047.18			
JT267	394,129.69	770,096.85			
JT268	394,173.00	769,554.11			
JT269	394,171.95	769,594.90			

PT #	NORTHING	EASTING
JH1104	394,035.55	770,115.12
JH1105	394,030.91	770,115.12
JH1106	394,030.91	770,115.12
JH1107	394,030.91	770,115.12
JH1108	394,030.91	770,115.12
JH1109	394,030.91	770,115.12
JH1110	394,030.91	770,115.12
JH1111	394,030.91	770,115.12
JH1112	394,030.91	770,115.12
JH1113	394,030.91	770,115.12
JH1114	394,030.91	770,115.12
JH1115	394,030.91	770,115.12
JH1116	394,030.91	770,115.12
JH1117	394,030.91	770,115.12
JH1118	394,030.91	770,115.12
JH1119	394,030.91	770,115.12
JH1120	394,030.91	770,115.12

SE QUARTER, SW QUARTER
 SECTION II
 T. 9 S., R. 1 E., 3RD P.M.

