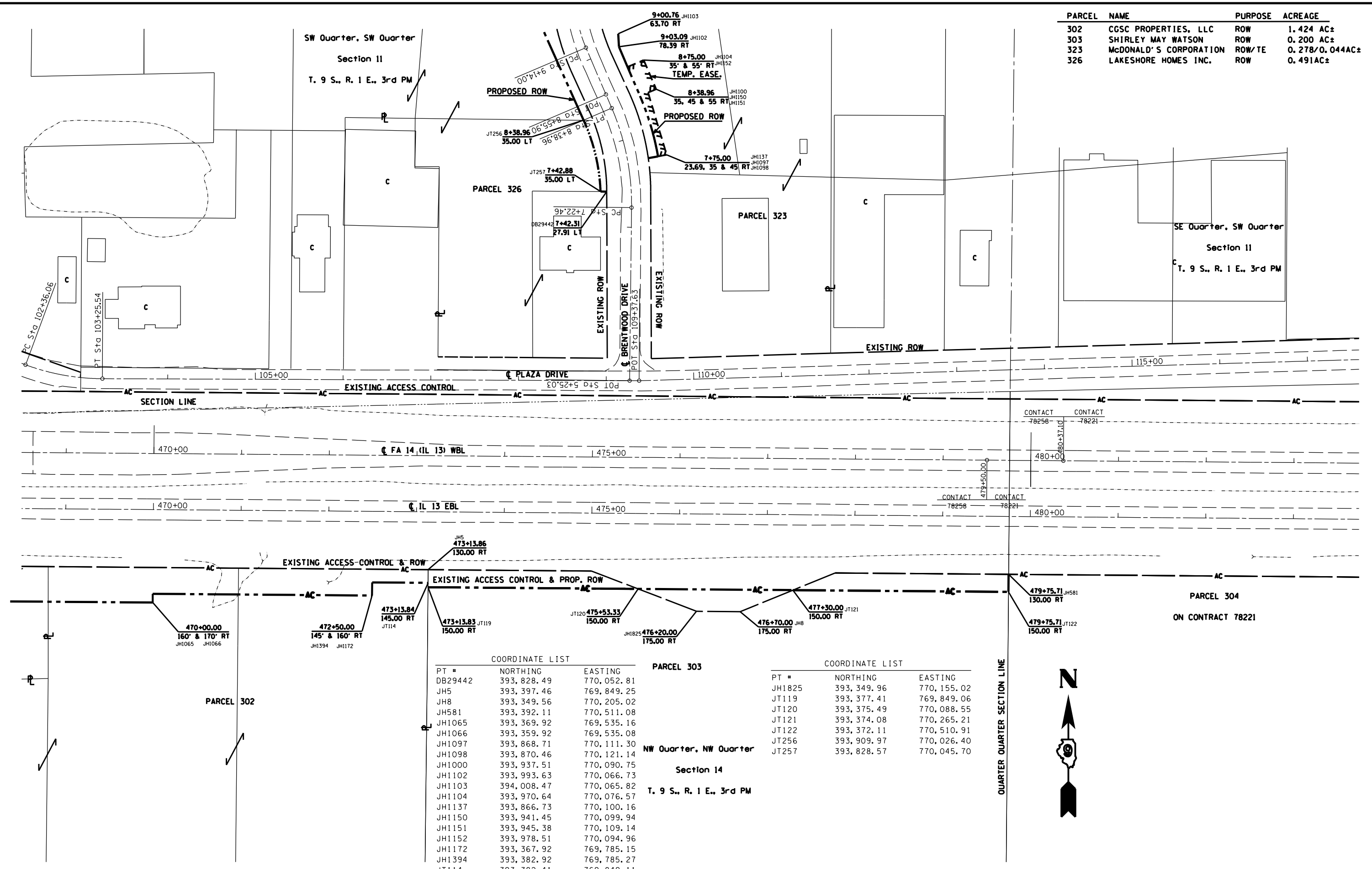


PARCEL	NAME	PURPOSE	ACREAGE
302	CGSC PROPERTIES, LLC	ROW	1.424 AC±
303	SHIRLEY MAY WATSON	ROW	0.200 AC±
323	MCDONALD'S CORPORATION	ROW/TE	0.278/0.044AC±
326	LAKESHORE HOMES INC.	ROW	0.491AC±



COORDINATE LIST

PT #	NORTHING	EASTING
DB29442	393, 828.49	770, 052.81
JH5	393, 397.46	769, 849.25
JH8	393, 349.56	770, 205.02
JH581	393, 392.11	770, 511.08
JH1065	393, 369.92	769, 535.16
JH1066	393, 359.92	769, 535.08
JH1097	393, 868.71	770, 111.30
JH1098	393, 870.46	770, 121.14
JH1000	393, 937.51	770, 090.75
JH1102	393, 993.63	770, 066.73
JH1103	394, 008.47	770, 065.82
JH1104	393, 970.64	770, 076.57
JH1137	393, 866.73	770, 100.16
JH1150	393, 941.45	770, 099.94
JH1151	393, 945.38	770, 109.14
JH1152	393, 978.51	770, 094.96
JH1172	393, 367.92	769, 785.15
JH1394	393, 382.92	769, 785.27
JT114	393, 382.41	769, 849.11

COORDINATE LIST

PT #	NORTHING	EASTING
JH1825	393, 349.96	770, 155.02
JT119	393, 377.41	769, 849.06
JT120	393, 375.49	770, 088.55
JT121	393, 374.08	770, 265.21
JT122	393, 372.11	770, 510.91
JT256	393, 909.97	770, 026.40
JT257	393, 828.57	770, 045.70