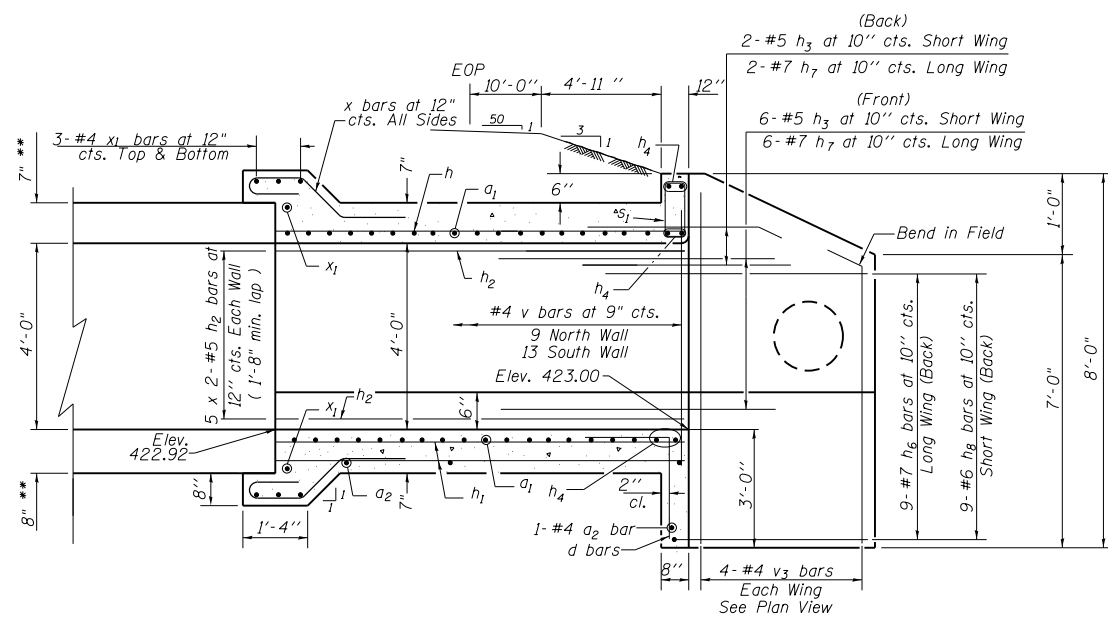
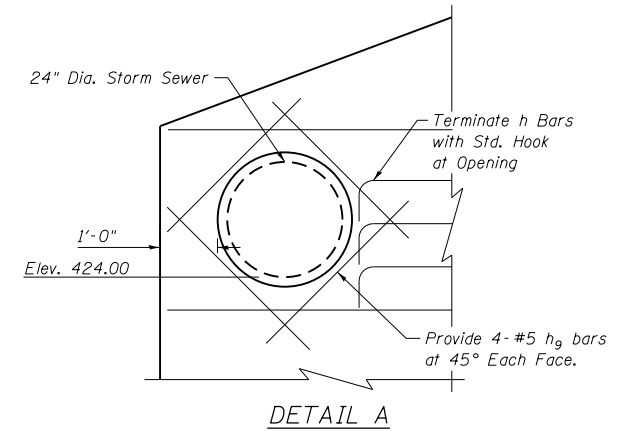


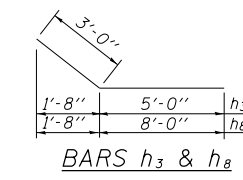
STATE OF ILLINOIS
DEPARTMENT OF TRANSPORTATION



ELEVATION
Dimensions at Rt. L's to \perp Roadway

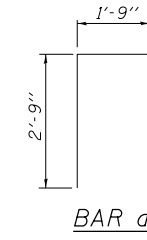


DETAIL A

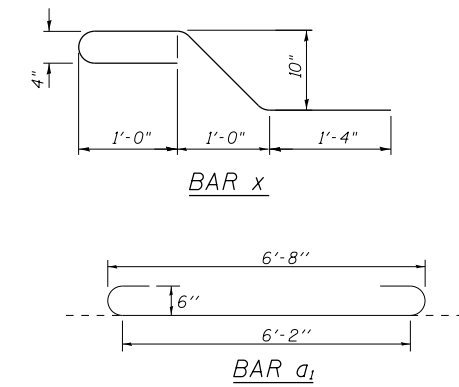


BARS h_6 & h_7

BARS h_3 & h_8

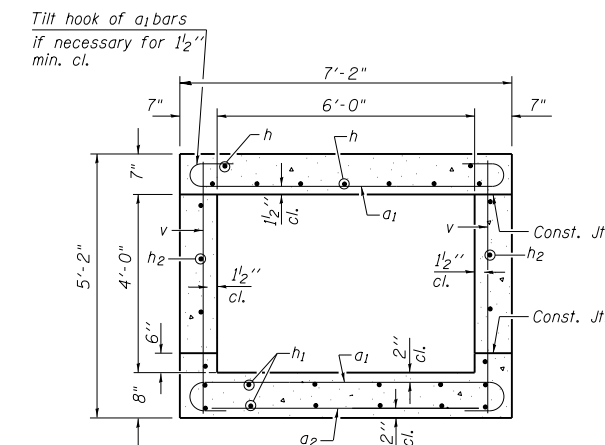


BAR d

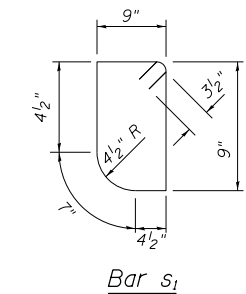


BAR x

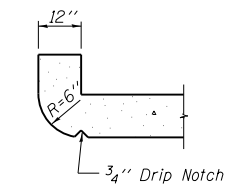
BAR a_1



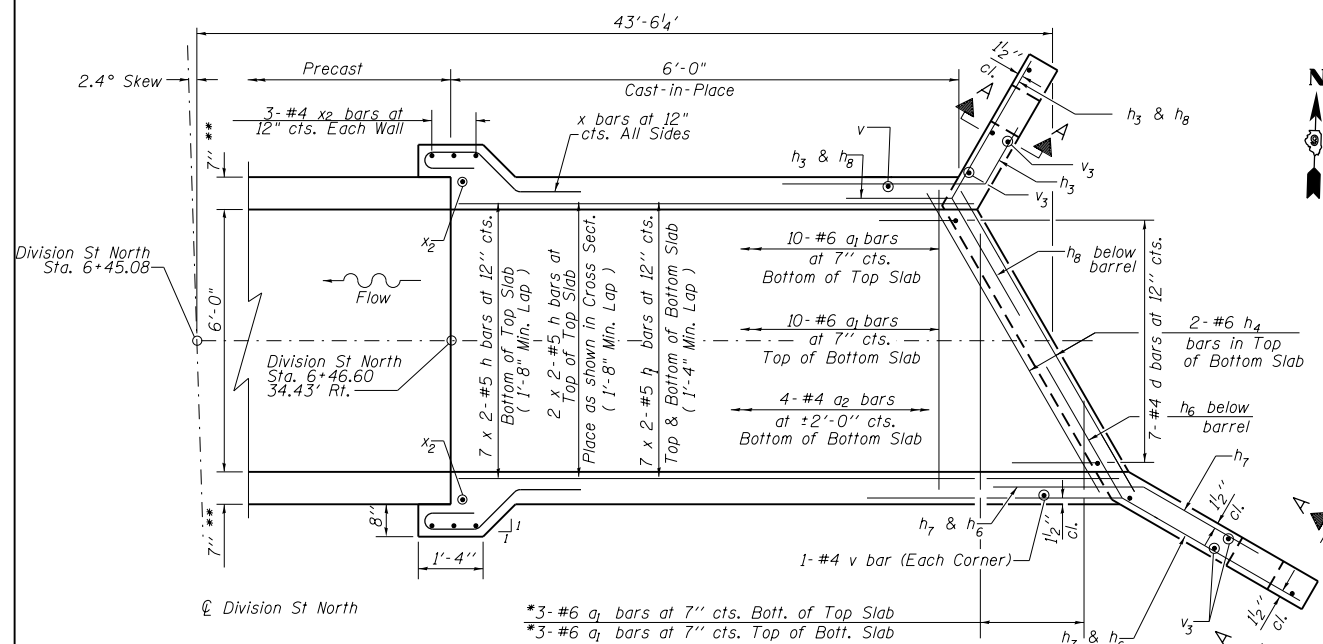
SECTION THRU BARREL



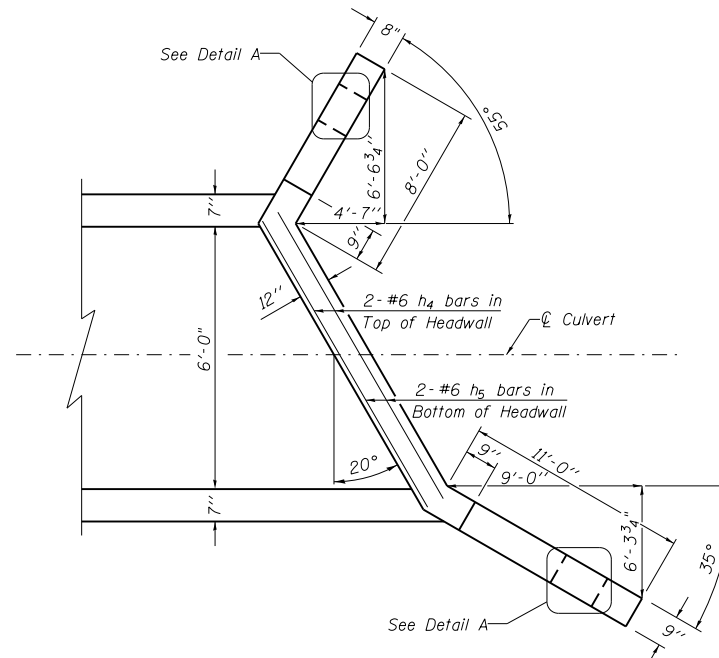
Bar s_1



SECTION THRU HEADWALL

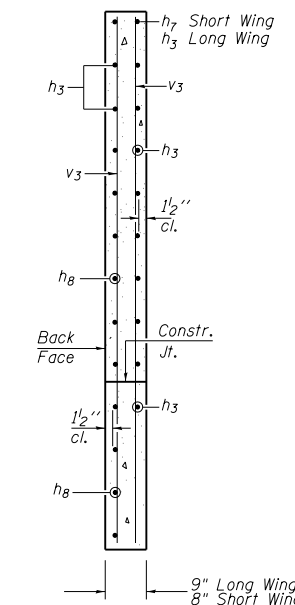


SHOWING REINFORCEMENT



PLAN

SHOWING OUTLINES



SECTION A-A

BILL OF MATERIAL

Bar	No.	Size	Length	Shape
a_1	26	#5	8'-3"	C
a_2	5	#4	6'-3"	—
d	7	#4	4'-6"	—
h	18	#5	5'-3"	—
h_1	28	#4	5'-3"	—
h_2	20	#5	5'-3"	—
h_3	8	#5	8'-0"	—
h_4	6	#6	6'-6"	—
h_6	9	#7	14'-0"	—
h_7	8	#7	8'-0"	—
h_8	9	#5	11'-0"	—
h_9	16	#5	4'-0"	—
s_1	9	#4	3'-0"	—
v	24	#4	4'-9"	—
v_3	8	#4	7'-7"	—
x	28	#4	6'-1"	—
x_1	8	#4	8'-0"	—
x_2	8	#4	5'-0"	—
Concrete Box Culverts			Cu. Yd.	9.1
Reinforcement Bars			Pound	1,623
Box Culvert End Sections, Culvert No. 3			Each	1

DESIGN STRESSES

$f_y = 60,000$ psi
 $f'_c = 3,500$ psi

NOTES

- All work on this sheet is to be performed in accordance with Article 503 of the Standard Specifications.
- Reinforcement Bars shall conform to the requirements of AASHTO M-31, M-42 or M-53, Grade 60.
- Quantities of concrete structures and reinforcement bars are tabulated for information purposes only. All work associated with the "Box Culvert End Sections, Culvert No. 3" including, but not limited to, excavation, Concrete, Reinforcement Bars, form work, etc. will be paid for at the unit price each bid for "Box Culvert End Sections, Culvert No. 3". No additional measurements or payments will be made.
- The dimensions shown for the cast-in-place end sections are based on assumed dimensions of the precast box culvert as denoted by the **. The Contractor may be required to make minor changes in the end section dimensions if the actual box culvert dimensions differ greatly from those shown in the plans. The cost of the minor changes, both in material quantities and labor, will not be paid for separately but is included in the unit price each bid for "Box Culvert End Sections, Culvert No. 3".
- A distance of half the length of the wingwall but not less than six feet of the barrel shall be poured monolithically with the wingwalls.
- All construction joints shall be bonded.
- Bars indicated thus 12 x 4-#5 etc. indicates 12 lines of bars with 4 lengths per line.

REVISIONS

REVISIONS	DATE
DRAWN	2-04
REVISED	5-09
REVISED	SHT CELL
REVISED	

BASED ON: **SSB-H-0** 6-1-2000

FILE NAME	USER NAME	DESIGNED	REVISED
D978258-sht-drain-53.dgn	mfox	- DD	-
		DRAWN - DD	REVISED -
		CHECKED - KM	REVISED -
		DATE -	REVISED -

STATE OF ILLINOIS
DEPARTMENT OF TRANSPORTATION

**BOX CULVERT: STATION 6+45.08 (DIVISION STREET NORTH)
EAST END, 6' X 4', SKEW 2.4° LENGTH 108'-0"**

SCALE: SHEET NO. 3 OF 5 SHEETS STA. TO STA.

F.A.P. RTE.	SECTION	COUNTY	TOTAL SHEETS	SHEET NO.
331	(1-4IR-2, N-4, TS-4	WILLIAMSON	381	253
	DRAWING NO. CD-03	CONTRACT NO. 78258		
	ILLINOIS FED. AID PROJECT			

CH2MHILL