

| RTE. | SECTION | CITY OF | TOTAL SHEETS | SHEET NO. |
|----------|----------------|----------|--------------|-----------|
| | 12-00023-00-SW | RIVERTON | 13 | 1 |
| ILLINOIS | | | | |

INDEX OF SHEETS

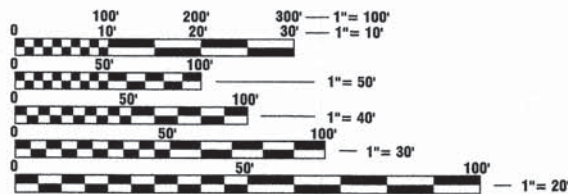
- 1 COVER SHEET
- 2 GENERAL NOTES - SUMMARY & SCHEDULE OF QUANTITIES
- 3 TYPICAL DETAILS
- 4-13 PLAN SHEETS

STANDARDS

- 424001-07 PERPENDICULAR CURB RAMPS FOR SIDEWALKS
- 424006-01 DIAGONAL CURB RAMPS FOR SIDEWALKS
- 424011-01 CORNER PARALLEL CURB RAMPS FOR SIDEWALKS
- 424016-01 MID-BLOCK CURB RAMPS FOR SIDEWALKS
- 424021-01 DEPRESSED CORNER FOR SIDEWALK
- 424026-01 ENTRANCE/ALLEY PEDESTRIAN CROSSING
- 606001-05 CONCRETE CURB TYPE B AND COMBINATION CONCRETE CURB AND GUTTER
- 701001-02 OFF-RD OPERATIONS, 2L, 2W, MORE THAN 15' (4.5 m) AWAY
- 701006-04 OFF-RD OPERATIONS, 2L, 2W, 15' (4.5 m) TO 24" (600 mm) FROM EDGE OF PAVEMENT
- 701801-05 SIDEWALK, CORNER OR CROSSWALK CLOSURE
- 701901-02 TRAFFIC CONTROL DEVICES
- 780001-03 TYPICAL PAVEMENT MARKINGS
- BLR 18-5 TRAFFIC CONTROL DEVICES-DAY LABOR MAINTENANCE

UTILITIES

- | | | |
|---|--|---|
| GAS VILLAGE OF RIVERTON 1200 E. Riverton Road, Riverton, IL 62561 Phone - 217 629-9122 | ELECTRIC VILLAGE OF RIVERTON 1200 E. Riverton Road, Riverton, IL 62561 Phone - 217 629-9122 | ELECTRIC AMEREN CILCO 825 North MacArthur Blvd. Springfield, IL 62702 Phone - (217) 753-5178 |
| WATER VILLAGE OF RIVERTON 1200 E. Riverton Road, Riverton, IL 62561 Phone - 217 629-9122 | PHONE AT&T 529 South Seventh, Floor 3B Springfield, IL 62721 Phone - 217 789-8227 | CABLE TV (RIVERTON) GREEN COUNTY CABLE 100 Redbud Rd. Virginia, IL 62691 Phone - 800-252-1799 |
| SEWER VILLAGE OF RIVERTON 1200 E. Riverton Road, Riverton, IL 62561 Phone - 217 629-9122 | GAS AMEREN CILCO 825 North MacArthur Blvd. Springfield, IL 62702 Phone - (217) 753-5178 | CABLE TV (SPAULDING) COMCAST CABLE 711 South Dirksen Pkwy Springfield, IL 62703 Phone - 788-5656 |



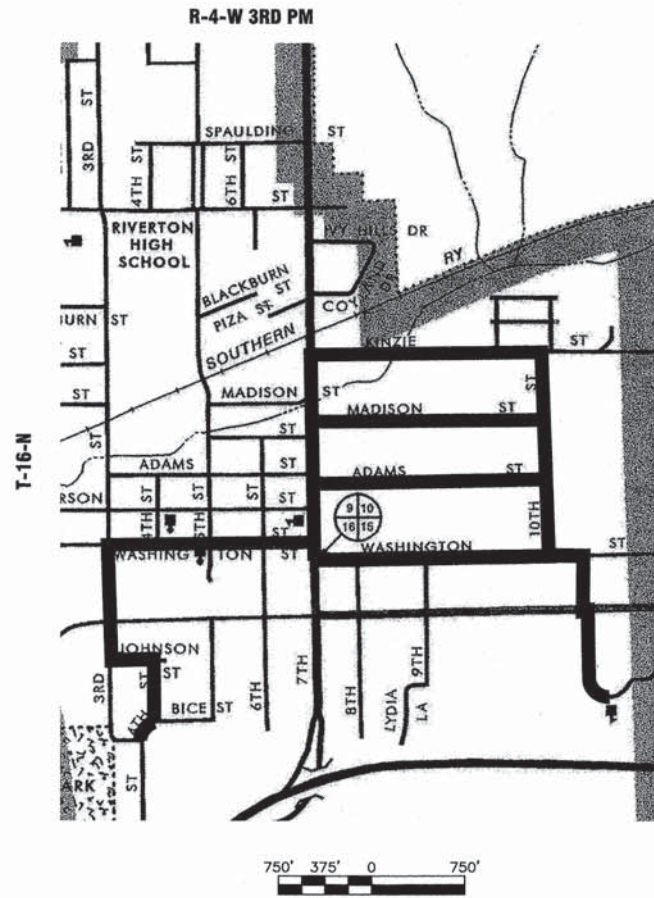
FULL SIZE PLANS HAVE BEEN PREPARED USING STANDARD ENGINEERING SCALES. REDUCED SIZED PLANS WILL NOT CONFORM TO STANDARD SCALES. IN MAKING MEASUREMENTS ON REDUCED PLANS, THE ABOVE SCALES MAY BE USED.

J.U.L.I.E.
JOINT UTILITY LOCATION INFORMATION FOR EXCAVATION
1-800-892-0123
OR 811

PROJECT ENGINEER
PROJECT MANAGER
CONTRACT NO. 93605



STATE OF ILLINOIS
DEPARTMENT OF TRANSPORTATION
DIVISION OF HIGHWAYS
PROPOSED PLANS
FOR:
SAFE ROUTES TO SCHOOL PROGRAM
PROJECT NO. SRTS-4009(195)
SECTION 12-00023-00-SW
VILLAGE OF RIVERTON
JOB NUMBER C-96-240-12



GROSS LENGTH = 10,185 FT. = 1.93 MILES
NET LENGTH = 10,185 FT. = 1.93 MILES



PROJECT DESCRIPTION: THIS WORK CONSISTS OF CONSTRUCTING PORTLAND CEMENT CONCRETE SIDEWALKS, HANDICAP RAMPS, PORTLAND CEMENT CONCRETE DRIVEWAY PAVEMENT AND CROSSWALK STRIPING



ILLINOIS PROFESSIONAL ENGINEER NO. 48381
DATE SIGNED: May 28, 2013
LICENSE EXP. DATE: November 30, 2013

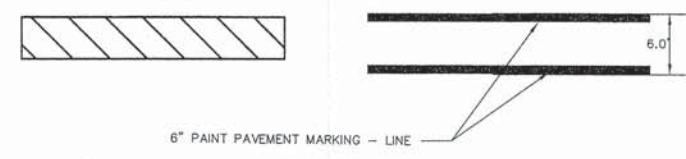
| | | |
|---|---------------------------|---|
| APPROVED | <u>May 29, 2013</u> | 2013 |
| | <u>Thomas F. Rader</u> | MAYOR, VILLAGE OF RIVERTON |
| PASSED | <u>June 3, 2013</u> | 2013 |
| | <u>Ron Dubois</u> | DISTRICT SIX ENGINEER OF CONSTRUCTION |
| PASSED | <u>JUNE 3</u> | 2013 |
| | <u>Tennessé H. Funder</u> | DISTRICT SIX ENGINEER OF LOCAL ROADS & STREETS |
| RELEASING FOR BID BASED ON LIMITED REVIEW | <u>JUNE 3</u> | 2013 |
| | <u>Roger J. Distal</u> | DEPUTY DIRECTOR OF HIGHWAYS, REGION FOUR ENGINEER |

PRINTED BY THE AUTHORITY OF THE STATE OF ILLINOIS

DATE: _____ BY: _____
 SURVEYED: _____
 ALIGNED: _____
 CHECKED: _____
 PLAN: _____
 NO. _____

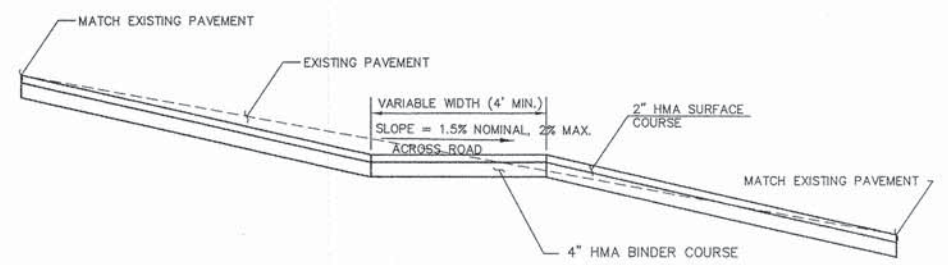
DATE: _____ BY: _____
 SURVEYED: _____
 ALIGNED: _____
 CHECKED: _____
 PROFILE: _____
 NO. _____

LEGEND



6" PAINT PAVEMENT MARKING - LINE

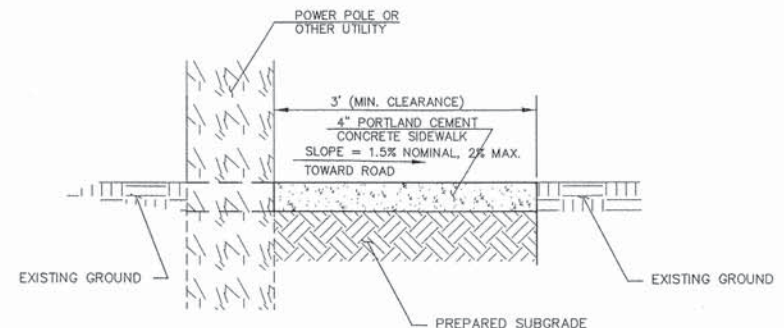
CROSSWALK DETAIL
NOT TO SCALE



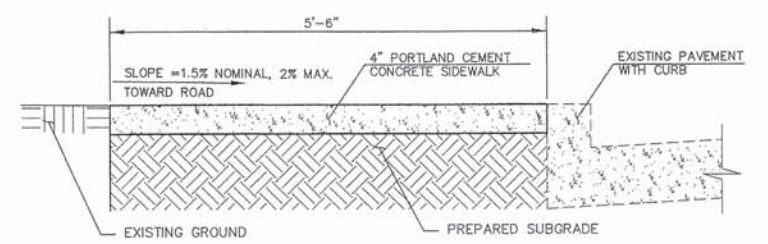
PAVEMENT REPLACEMENT SPECIAL
NOT TO SCALE

| HOT-MIX ASPHALT MIXTURE REQUIREMENTS | | | |
|--------------------------------------|-----------------------|---------------|------------------|
| ITEM | AGGREGATE COMPOSITION | ASPHALT GRADE | DESIGN AIR VOIDS |
| HMA BINDER CSE | IL-19.0 | PG 64-22 | 4.0% @ N50 |
| HMA SURFACE CSE | IL-9.5 Mix "C" | PG 64-22 | 4.0% @ N50 |

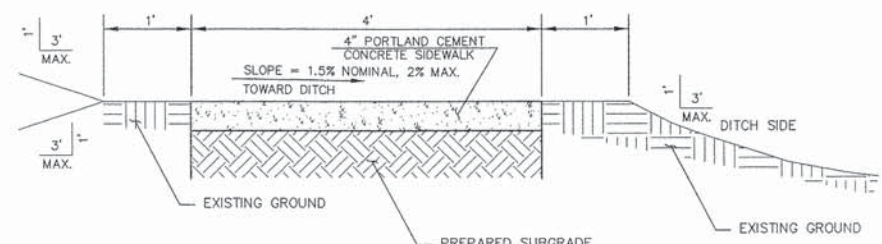
> Hot-Mix Asphalt quantities based on 112 lb./sq. yd./inch



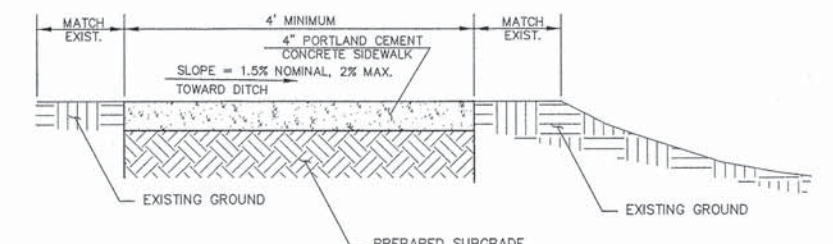
TYPICAL SIDEWALK SECTION (WITH UTILITY CONFLICT)
NOT TO SCALE



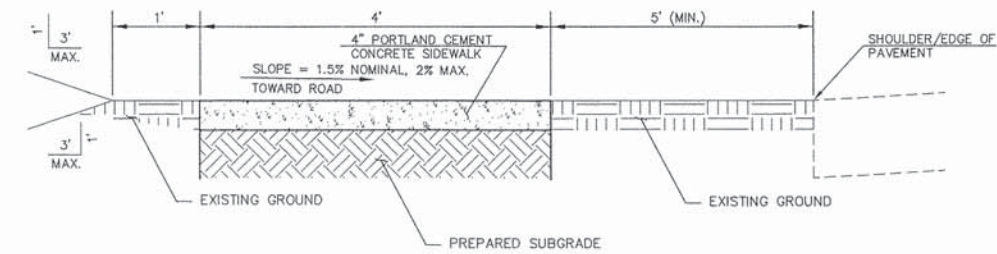
TYPICAL SIDEWALK SECTION (ADJACENT TO CURB) (REMOVE (BY OTHERS) AND REPLACE)
NOT TO SCALE



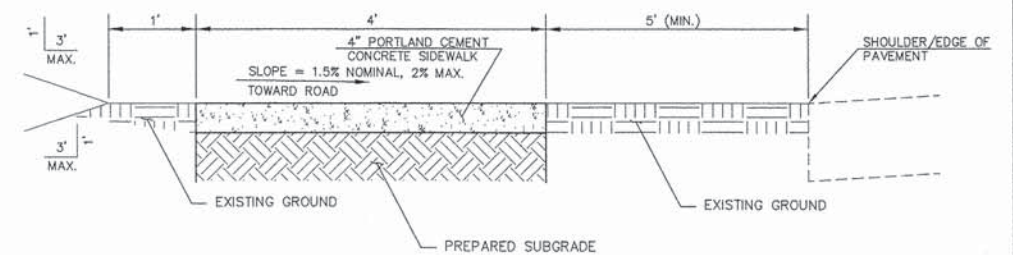
TYPICAL SIDEWALK SECTION (ALONG DITCH) (NEW)
NOT TO SCALE



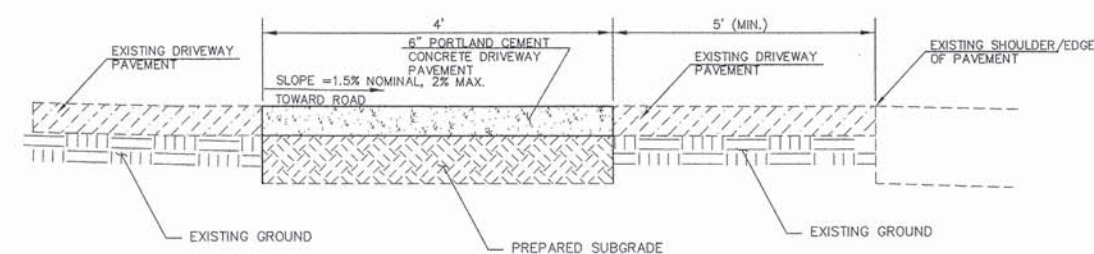
TYPICAL SIDEWALK SECTION (ALONG DITCH) (REMOVE (BY OTHERS) AND REPLACE)
NOT TO SCALE



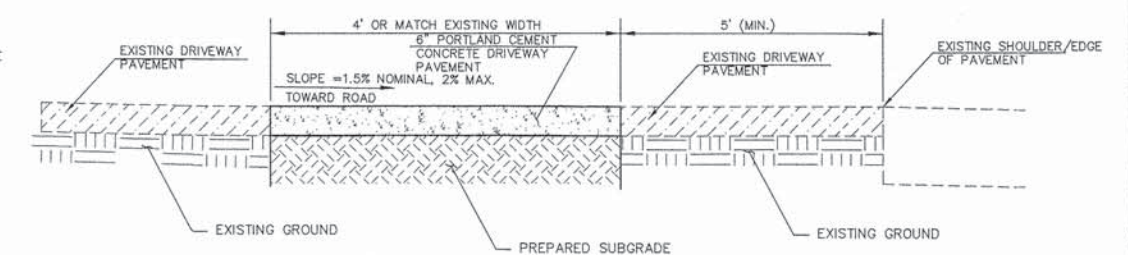
TYPICAL SIDEWALK SECTION (ALONG ROADWAY) (NEW)
NOT TO SCALE



TYPICAL SIDEWALK SECTION (ALONG ROADWAY) (REMOVE (BY OTHERS) AND REPLACE)
NOT TO SCALE



TYPICAL DRIVEWAY SECTION (ALONG ROADWAY) (NEW)
NOT TO SCALE



TYPICAL DRIVEWAY SECTION (ALONG ROADWAY) (REMOVE (BY OTHERS) AND REPLACE)
NOT TO SCALE

FILE NAME = g:\job\12043\2013 CONSTRUCTION DRAWINGS\Revised-C-COVER.dwg
 PLOT SCALE = 1" = .2154'
 PLOT DATE = 5/28/2013

USER NAME = LHOFFMAN
 DESIGNED L. HOFFMAN
 DRAWN K. WILLIAMS
 CHECKED L. HOFFMAN
 DATE -

REVISED - -
 REVISED - -
 REVISED - -
 REVISED - -

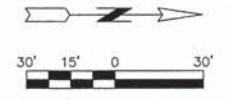
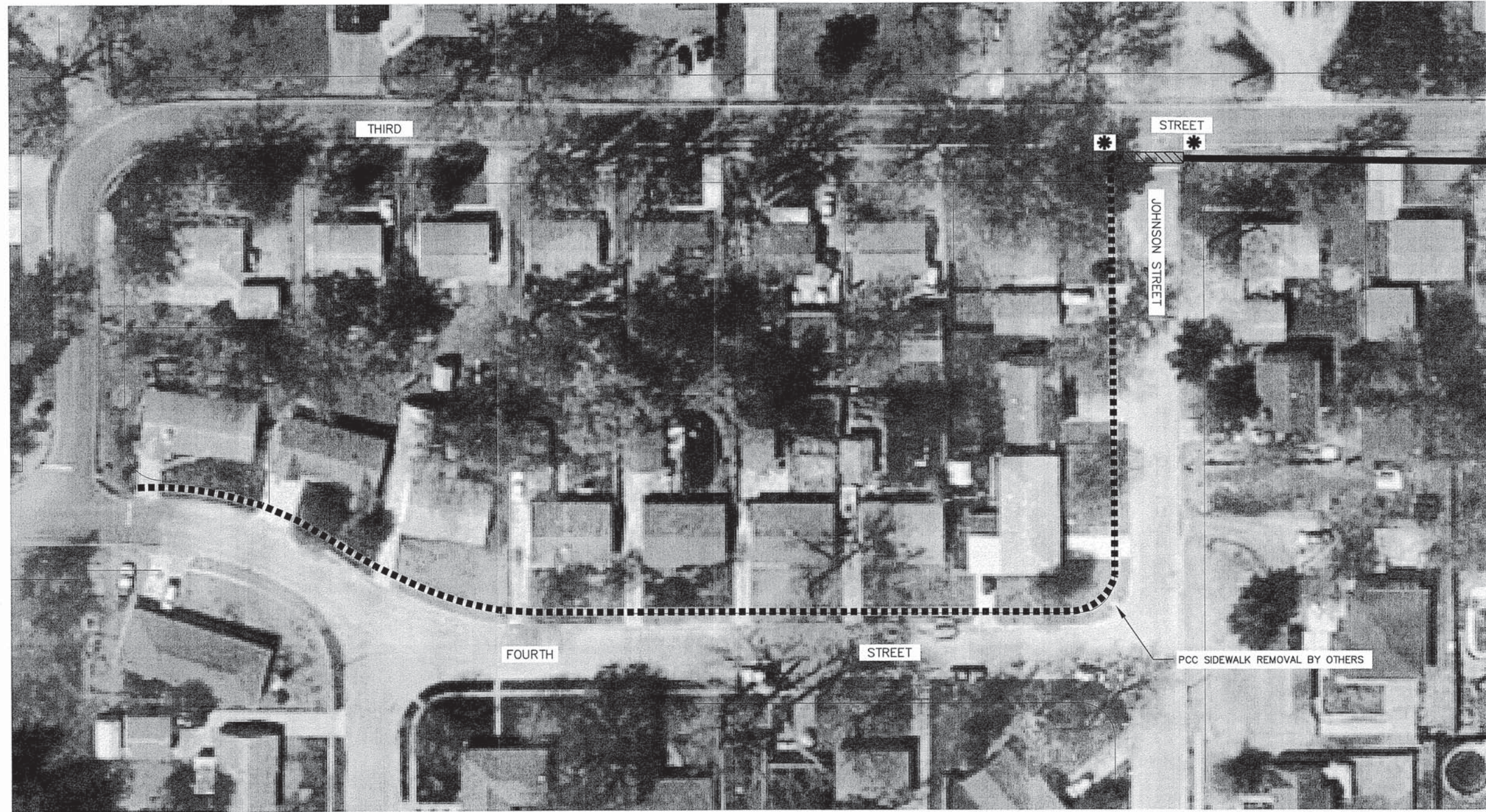
**STATE OF ILLINOIS
DEPARTMENT OF TRANSPORTATION**

TYPICAL DETAILS
SAFE ROUTES TO SCHOOL - RIVERTON, ILLINOIS
 SCALE: 1" = 1' STA. TYPICAL DETAILS

| F.A. RTE. | SECTION | CITY | TOTAL SHEETS | SHEET NO. |
|---------------------------|----------------|----------|--------------|-----------|
| | 12-00023-06-SW | RIVERTON | 13 | 3 |
| CONTRACT NO. 93605 | | | | |
| ILLINOIS FED. AID PROJECT | | | | |

| | | |
|---------------|--------------------|------|
| PLAN | SURVEYED | DATE |
| NOTE BOOK NO. | PLOTTED | BY |
| | BY | |
| | DATE | |
| | NO. OF WAY CHECKED | |
| | CADD FILE NAME | |

| | | |
|---------------|--------------------|------|
| PROFILE | SURVEYED | DATE |
| NOTE BOOK NO. | PLOTTED | BY |
| | BY | |
| | DATE | |
| | NO. OF WAY CHECKED | |
| | CADD FILE NAME | |



MATCH LINE - SHEET 5

LEGEND

- DETECTABLE WARNINGS
- PCC SIDEWALK, 4 INCH
- PCC SIDEWALK, 4 INCH (REMOVAL & REPLACEMENT)
- CROSSWALK STRIPING

| | | | |
|--|------------------------|---------------------|------------|
| FILE NAME = | USER NAME = | DESIGNED L. HOFFMAN | REVISED -- |
| G:\jobs\12043\2013 CONSTRUCTION DRAWINGS\12043BASE-3RD.dwg | | DRAWN K. WILLIAMS | REVISED -- |
| | PLOT SCALE = 1" = .22' | CHECKED L. HOFFMAN | REVISED -- |
| | PLOT DATE = 5/27/2013 | DATE -- | REVISED -- |

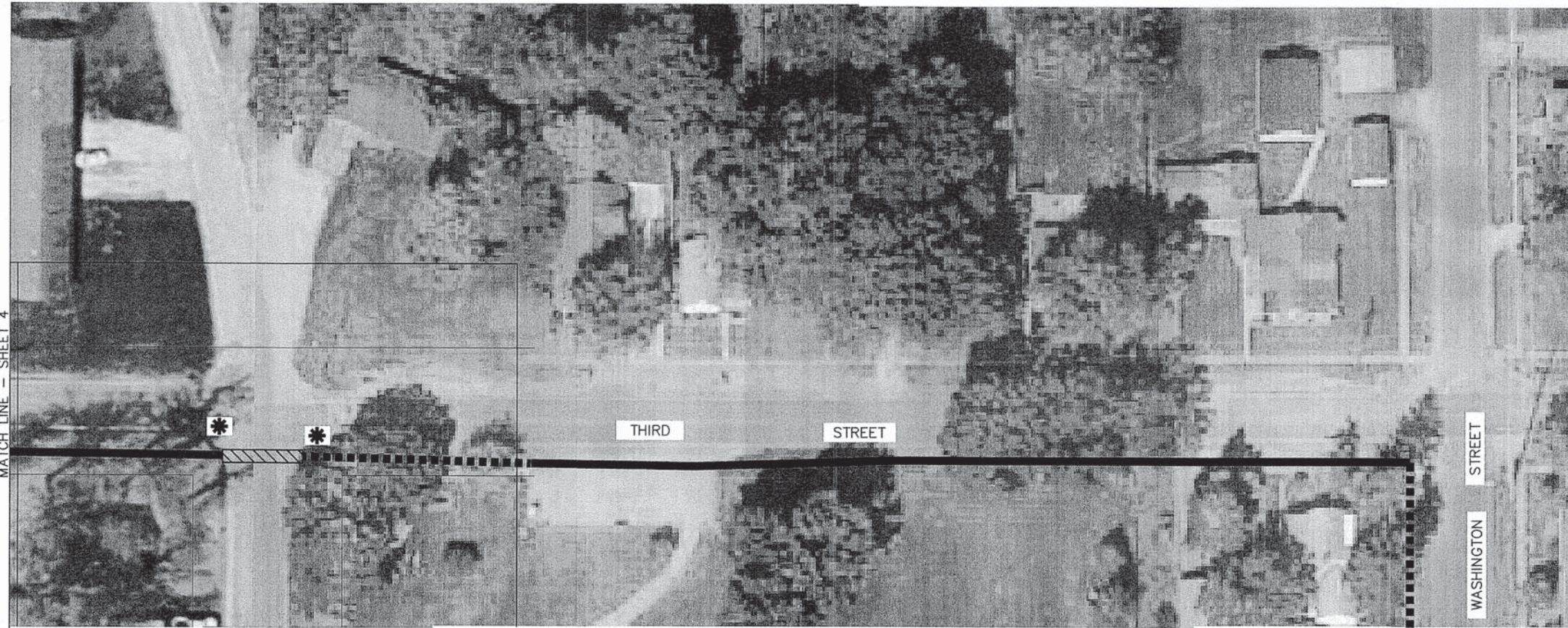
**STATE OF ILLINOIS
DEPARTMENT OF TRANSPORTATION**

| | | |
|---|---|-------------------|
| THIRD STREET PLAN SHEET | | |
| SAFE ROUTES TO SCHOOL - RIVERTON, ILLINOIS | | |
| SCALE: 1" = 30' | 4 | STA. THIRD STREET |

| | | | | |
|---------------------------|----------------|----------|--------------|-----------|
| F.A. RTE. | SECTION | CITY | TOTAL SHEETS | SHEET NO. |
| | 12-00023-00-SW | RIVERTON | 13 | 4 |
| CONTRACT NO. 93605 | | | | |
| ILLINOIS FED. AID PROJECT | | | | |

| | | |
|---------------|--------------------|------|
| PLAN | SURVEYED | DATE |
| NOTE BOOK NO. | ALIGNMENT CHECKED | BY |
| | RT. OF WAY CHECKED | |
| | POD FILE NAME | |

| | | |
|---------------|--------------------------|------|
| PROFILE | SURVEYED | DATE |
| NOTE BOOK NO. | GRADES CHECKED | BY |
| | BLM. NOTED | |
| | STRUCTURE NOTATIONS OK'D | |



LEGEND

- * - DETECTABLE WARNINGS
- PCC SIDEWALK, 4 INCH
- ■ ■ PCC SIDEWALK, 4 INCH (REMOVAL & REPLACEMENT)
- ▨ - CROSSWALK STRIPING

| | | | |
|--|-----------------------|---------------------|------------|
| FILE NAME = | USER NAME = | DESIGNED L. HOFFMAN | REVISED -- |
| G:\jobs\12043\2013 CONSTRUCTION DRAWINGS\12043BASE-3RD.dwg | | DRAWN K. WILLIAMS | REVISED -- |
| | PLOT SCALE = 1" = 22' | CHECKED L. HOFFMAN | REVISED -- |
| | PLOT DATE = 5/27/2013 | DATE -- | REVISED -- |

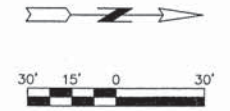
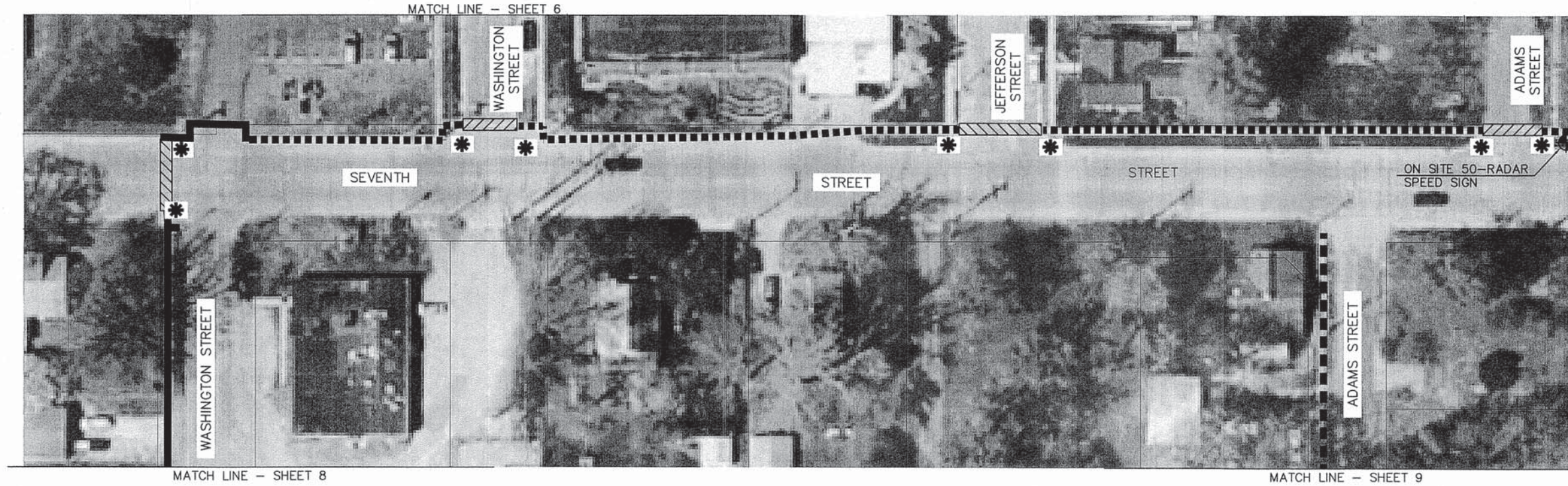
**STATE OF ILLINOIS
DEPARTMENT OF TRANSPORTATION**

**THIRD STREET PLAN SHEET
SAFE ROUTES TO SCHOOL - RIVERTON, ILLINOIS**

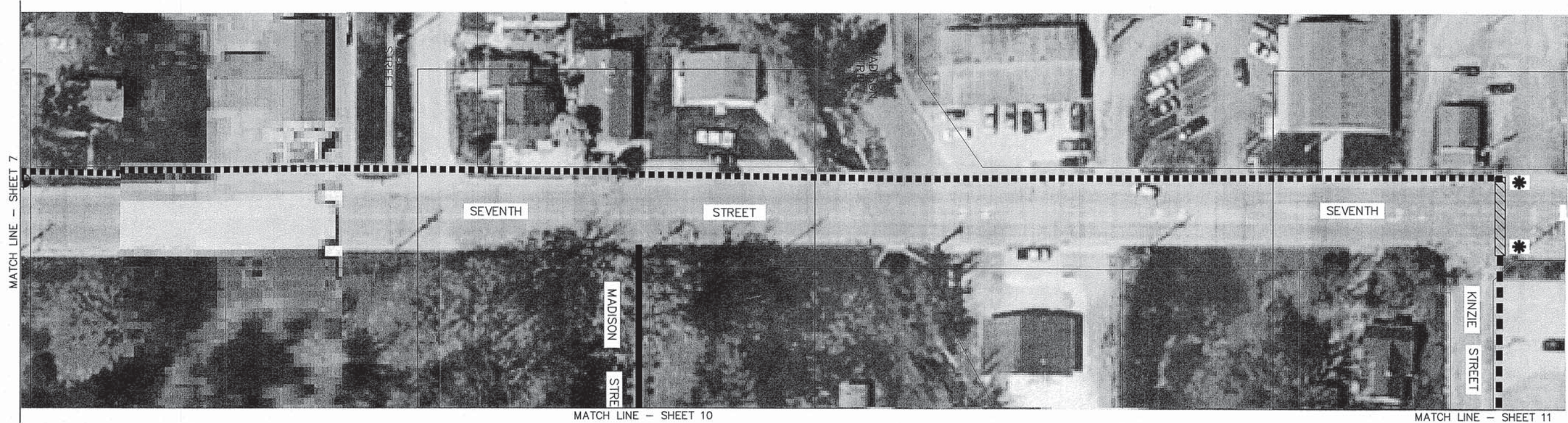
SCALE: 1" = 30' STA. THIRD STREET TO WASHINGTON

| | | | | |
|-----------|----------------|----------|---------------------------|-----------|
| F.A. RTE. | SECTION | CITY | TOTAL SHEETS | SHEET NO. |
| | 12-00023-00-SW | RIVERTON | 13 | 5 |
| | | | CONTRACT NO. 93605 | |
| | | | ILLINOIS FED. AID PROJECT | |

| | | |
|------|--------------------|------|
| PLAN | SURVEYED | DATE |
| | PLOTTED | BY |
| | CHECKED | |
| | RT. OF WAY CHECKED | |
| | NO. OF WAY CHECKED | |
| | CADD FILE NAME | |
| | NO. | |



| | | |
|---------|--------------------------|------|
| PROFILE | SURVEYED | DATE |
| | PLOTTED | BY |
| | CHECKED | |
| | B.M. NOTED | |
| | STRUCTURE NOTATIONS OK'D | |
| | NO. | |

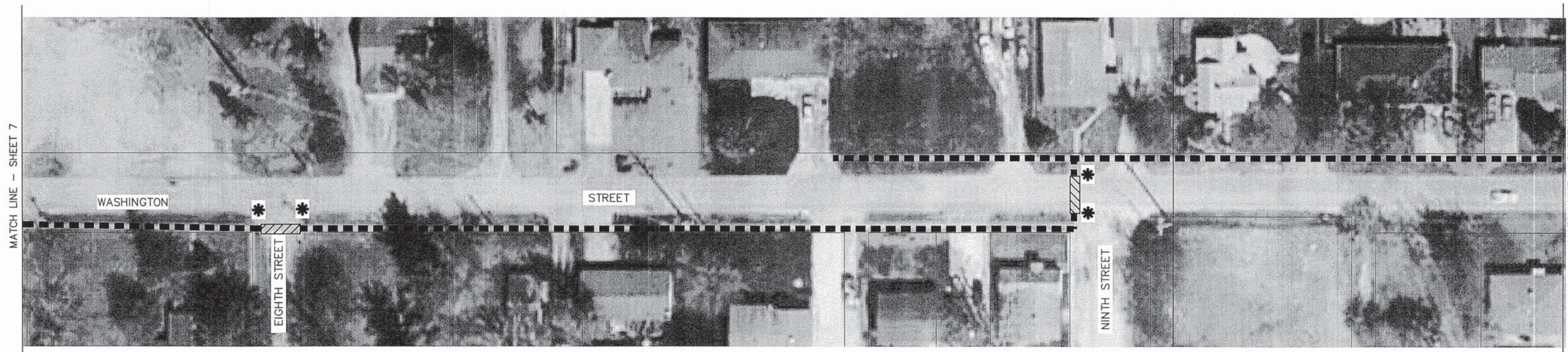


- LEGEND**
- * - DETECTABLE WARNINGS
 - PCC SIDEWALK, 4 INCH
 - - - PCC SIDEWALK, 4 INCH (REMOVAL & REPLACEMENT)
 - ▨ - CROSSWALK STRIPING

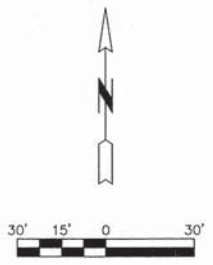
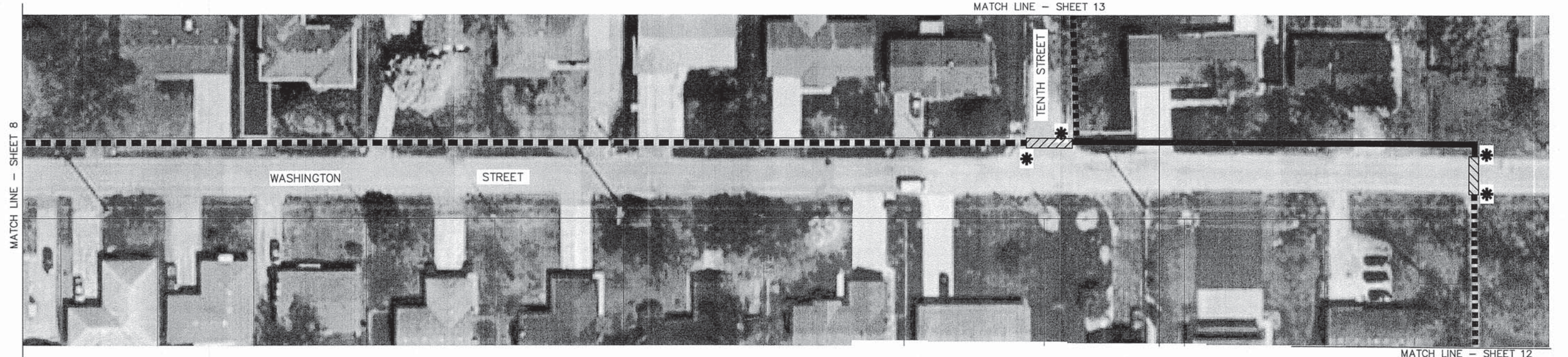
NOTE: COORDINATE EXACT LOCATION OF RADAR SPEED SIGN WITH THE VILLAGE.

| | | | | | | | | | | |
|---|-----------------------------------|--|--------------------------|---|---|-----------------------------|---------|---------------------------|--------------|-----------|
| FILE NAME = G:\jobs\12043\2013 CONSTRUCTION DRAWINGS\12043BASE-SEVENTH AND TENTH.dwg | USER NAME = ---- AND TENTH.dwg | DESIGNED L. HOFFMAN DRAWN K. WILLIAMS | REVISED -- REVISED -- | STATE OF ILLINOIS DEPARTMENT OF TRANSPORTATION | SEVENTH STREET (SOUTH) PLAN SHEET SAFE ROUTES TO SCHOOL - RIVERTON, ILLINOIS | F.A. RTE. | SECTION | CITY | TOTAL SHEETS | SHEET NO. |
| PLOT SCALE = 1" = .22' | CHECKED L. HOFFMAN | REVISED -- | 12-00023-00-SW | | | RIVERTON | 13 | 7 | | |
| PLOT DATE = 5/27/2013 | DATE -- | REVISED -- | CONTRACT NO. 93605 | | | | | | | |
| SCALE: 1" = 30' | | | | | | STA. SEVENTH STREET (SOUTH) | | ILLINOIS FED. AID PROJECT | | |

| | | |
|------|-----------|------|
| PLAN | SURVEYED | DATE |
| | PLOTTED | |
| | NOTED | |
| | BY | |
| | DATE | |
| | NOTE BOOK | |
| | NO. | |
| | FILE NAME | |



| | | |
|---------|-----------|------|
| PROFILE | SURVEYED | DATE |
| | PLOTTED | |
| | NOTED | |
| | BY | |
| | DATE | |
| | NOTE BOOK | |
| | NO. | |
| | FILE NAME | |



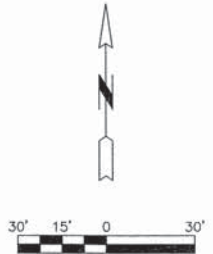
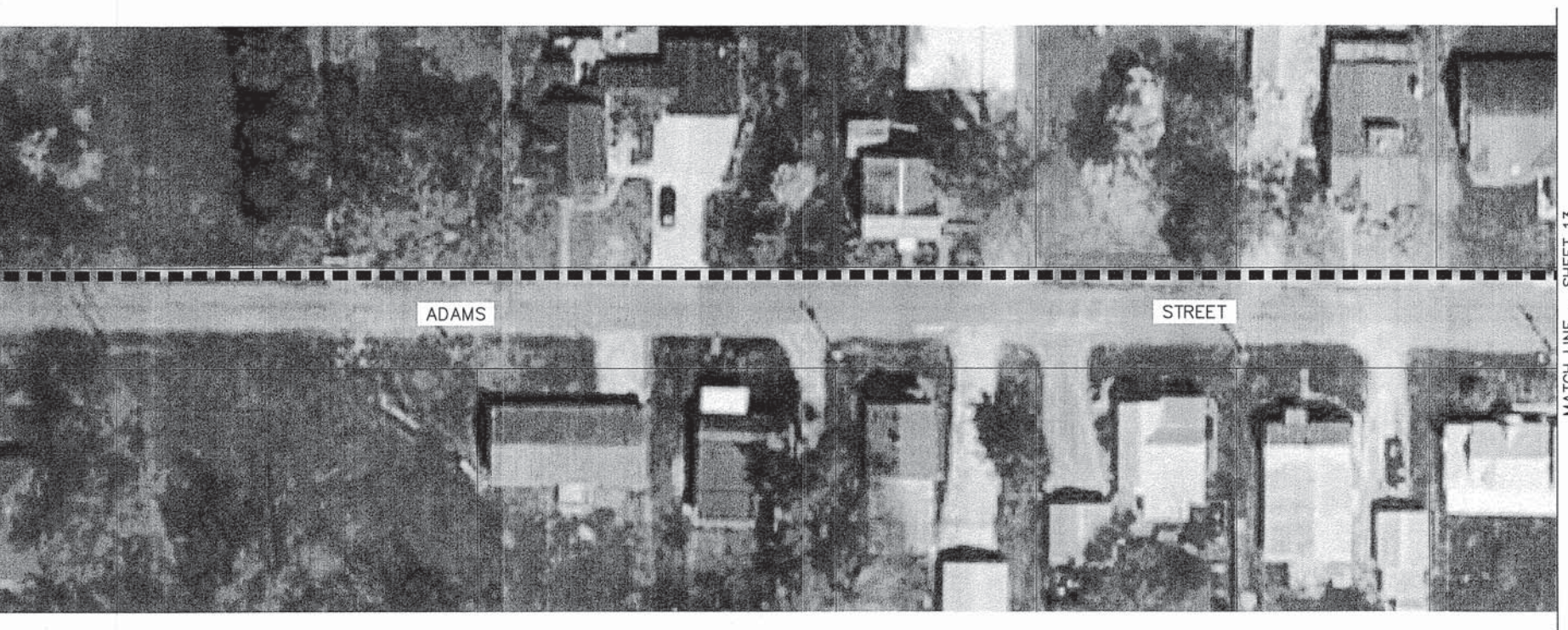
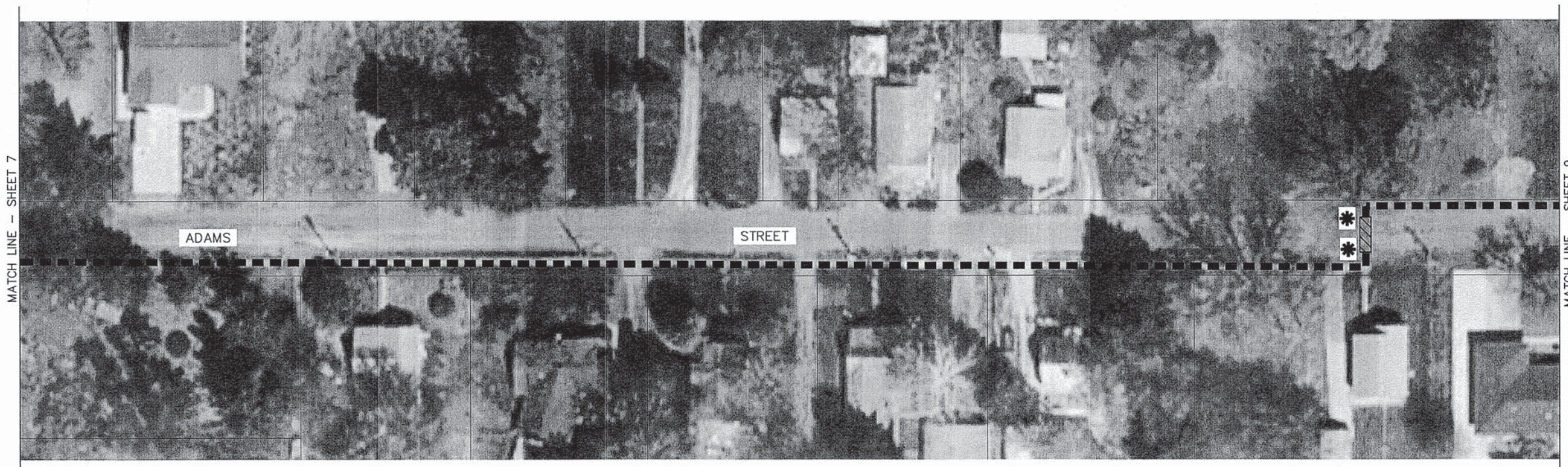
LEGEND

- * - DETECTABLE WARNINGS
- PCC SIDEWALK, 4 INCH
- PCC SIDEWALK, 4 INCH (REMOVAL & REPLACEMENT)
- CROSSWALK STRIPING

| | | | | | | | | | | | |
|---|------------------|---------------------|------------|---|--|--|----------------|----------|------|---------------------------|-----------|
| FILE NAME = G:\jobs\12043\2013 CONSTRUCTION DRAWINGS\12043BASE-WASHINGTON.dwg | USER NAME = ---- | DESIGNED L. HOFFMAN | REVISED -- | STATE OF ILLINOIS DEPARTMENT OF TRANSPORTATION | WASHINGTON STREET PLAN SHEET SAFE ROUTES TO SCHOOL - RIVERTON, ILLINOIS | | F.A. RTE. | SECTION | CITY | TOTAL SHEETS | SHEET NO. |
| | | DRAWN K. WILLIAMS | REVISED -- | | SCALE: 1" = 30' | | 12-00023-00-SW | RIVERTON | 13 | 8 | |
| | | CHECKED L. HOFFMAN | REVISED -- | | | | | | | CONTRACT NO. 93605 | |
| | | DATE -- | REVISED -- | | | | | | | ILLINOIS FED. AID PROJECT | |
| PLOT SCALE = 1" = .22' | | | | | | | | | | | |
| PLOT DATE = 5/27/2013 | | | | | | | | | | | |

| | |
|-----------------|----------------|
| PLAN | DATE |
| NO. _____ | BY _____ |
| NOTE BOOK _____ | APPROVED _____ |
| NO. _____ | DATE _____ |
| NO. _____ | DATE _____ |
| NO. _____ | DATE _____ |
| NO. _____ | DATE _____ |
| NO. _____ | DATE _____ |

| | |
|-----------------|----------------|
| PROFILE | DATE |
| NO. _____ | BY _____ |
| NOTE BOOK _____ | APPROVED _____ |
| NO. _____ | DATE _____ |
| NO. _____ | DATE _____ |
| NO. _____ | DATE _____ |
| NO. _____ | DATE _____ |
| NO. _____ | DATE _____ |



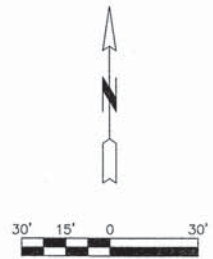
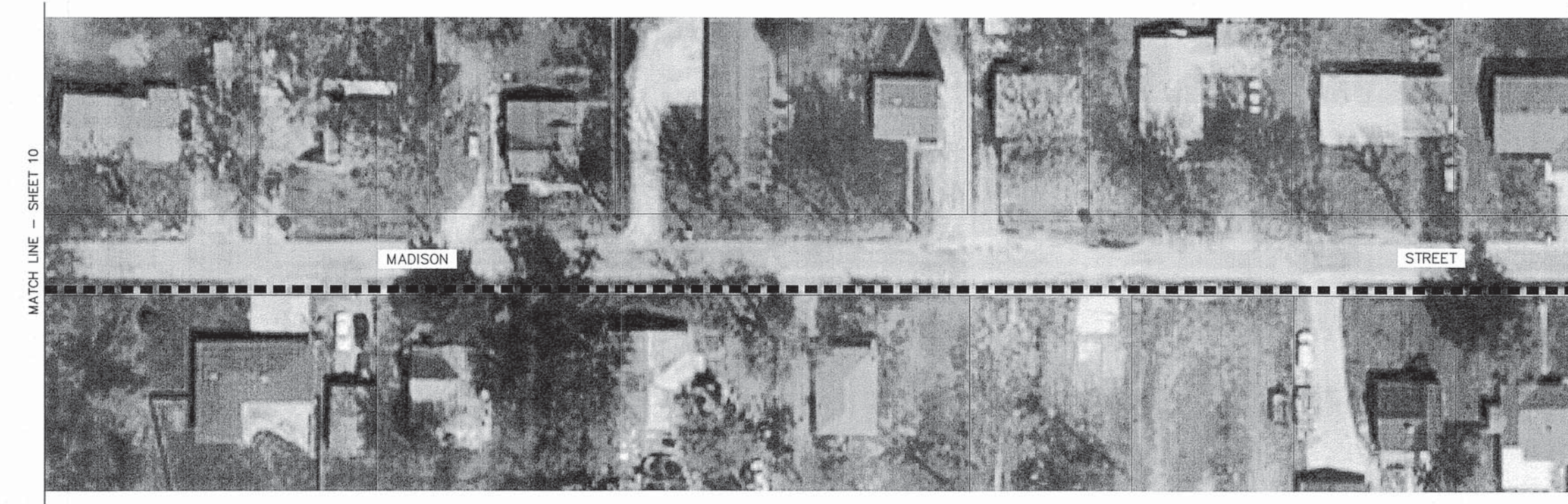
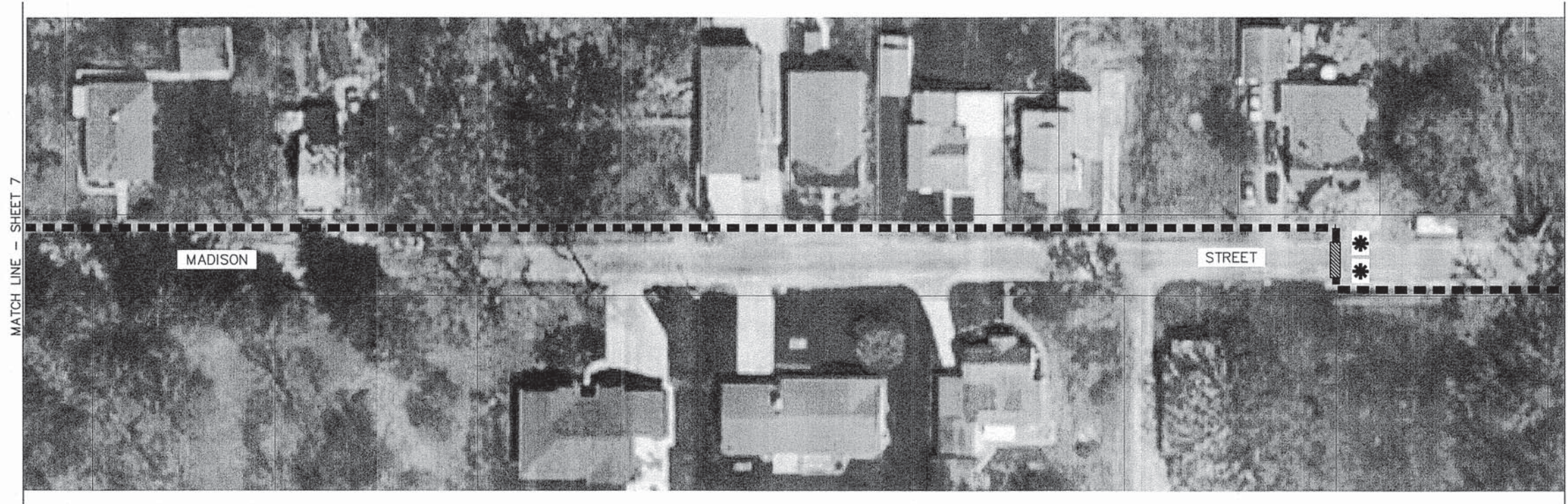
- LEGEND**
- DETECTABLE WARNINGS
 - PCC SIDEWALK, 4 INCH
 - PCC SIDEWALK, 4 INCH (REMOVAL & REPLACEMENT)
 - CROSSWALK STRIPING

| | | | | | | | | | | |
|--|-------------------|---------------------|--------------|---|---|---------------------------|------------|---------------------------|--------------|-----------|
| FILE NAME = G:\jobs\12043\2013 CONSTRUCTION DRAWINGS\12043BASE-ADAMS.dwg | USER NAME = ----- | DESIGNED L. HOFFMAN | REVISED -- - | STATE OF ILLINOIS DEPARTMENT OF TRANSPORTATION | ADAMS STREET PLAN SHEET SAFE ROUTES TO SCHOOL - RIVERTON, ILLINOIS | F.A. RTE. | SECTION | CITY | TOTAL SHEETS | SHEET NO. |
| PLOT SCALE = 1" = .22' | DRAWN K. WILLIAMS | CHECKED L. HOFFMAN | REVISED -- - | | | 12-00023-00-SW | RIVERTON | 13 | 9 | |
| PLOT DATE = 5/27/2013 | DATE -- | REVISED -- - | REVISED -- - | | | CONTRACT NO. 93605 | | | | |
| | | | | | | SCALE: 1" = 30' | STA. ADAMS | ILLINOIS FED. AID PROJECT | | |

G:\jobs\12043\2013 CONSTRUCTION DRAWINGS\12043BASE-ADAMS.dwg, ADAMS, 5/27/2013 11:05 AM, LARRY HOFFMAN, 1:1

| | | |
|---------------|--------------------|------|
| PLAN | SURVEYED | DATE |
| NOTE BOOK NO. | PLOTTED | BY |
| | PRINTED | |
| | RT. OF WAY CHECKED | |
| | ADD FILE NAME | |

| | | |
|---------------|-------------------------|------|
| PROFILE | SURVEYED | DATE |
| NOTE BOOK NO. | PLOTTED | BY |
| | PRINTED | |
| | RT. OF WAY CHECKED | |
| | STRUCTURE NOTATION OK'D | |

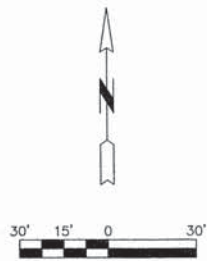
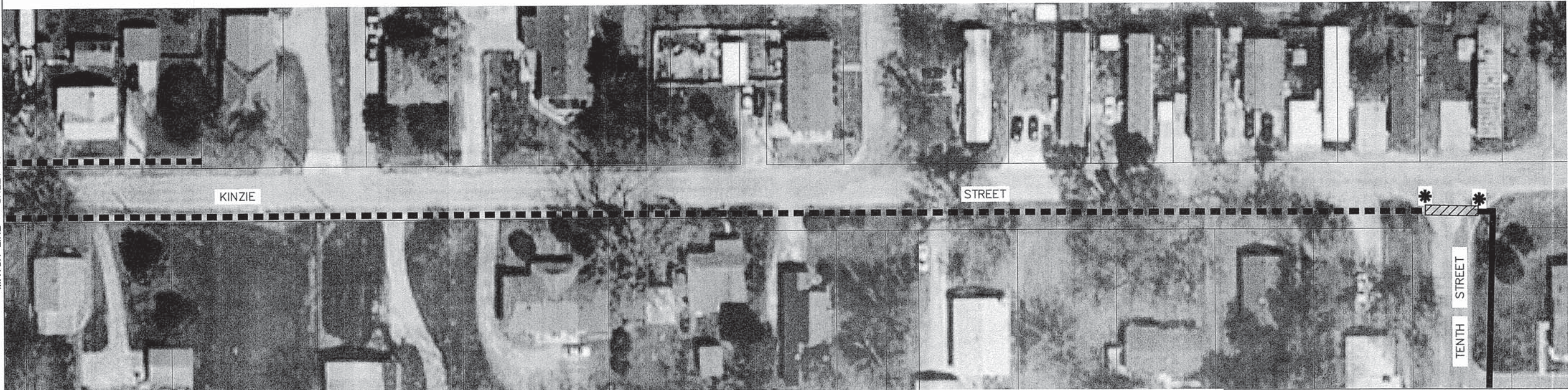
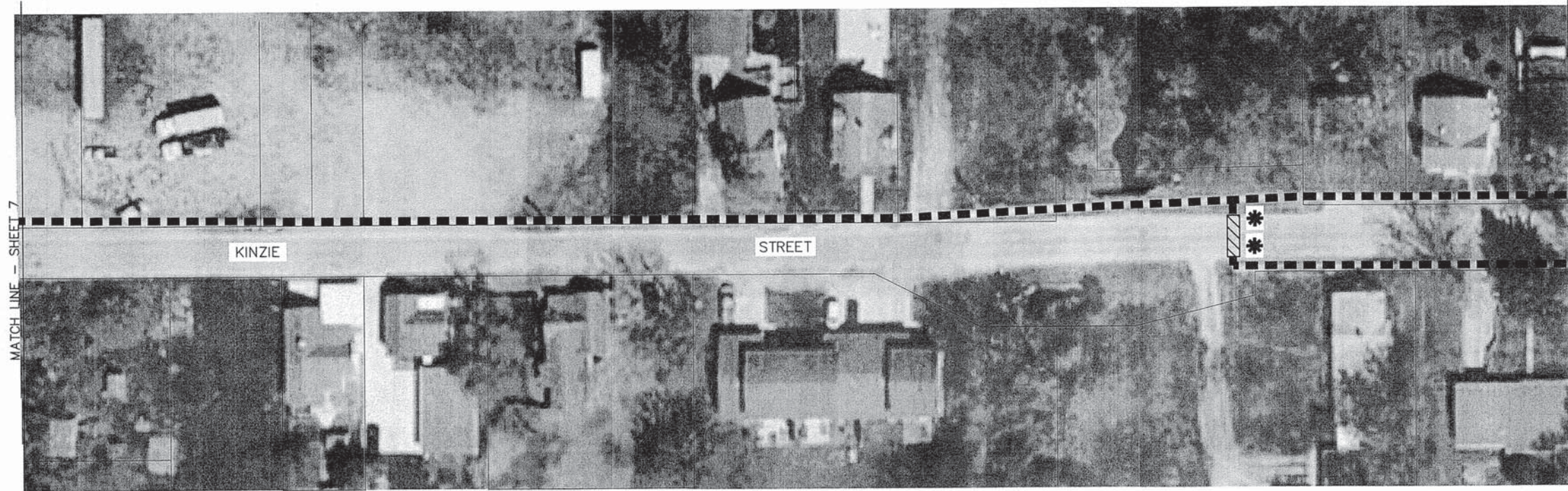


- LEGEND**
- * - DETECTABLE WARNINGS
 - ▬ - PCC SIDEWALK, 4 INCH
 - ▬▬ - PCC SIDEWALK, 4 INCH (REMOVAL & REPLACEMENT)
 - ▨▨▨ - CROSSWALK STRIPING

| | | | | | | | | | | |
|--|-------------|---------------------|------------|---|---|---------------------------|----------|------|--------------|-----------|
| FILE NAME = | USER NAME = | DESIGNED L. HOFFMAN | REVISED -- | STATE OF ILLINOIS DEPARTMENT OF TRANSPORTATION | MADISON STREET PLAN SHEET SAFE ROUTES TO SCHOOL - RIVERTON, ILLINOIS | F.A. RTE. | SECTION | CITY | TOTAL SHEETS | SHEET NO. |
| G:\jobs\12043\2013 CONSTRUCTION DRAWINGS\12043BASE-MADISON.dwg | | DRAWN K. WILLIAMS | REVISED -- | | | 12-00023-00-SW | RIVERTON | 13 | 10 | |
| PLOT SCALE = 1" = .22' | | CHECKED L. HOFFMAN | REVISED -- | | | CONTRACT NO. 93605 | | | | |
| PLOT DATE = 5/27/2013 | | DATE -- | REVISED -- | | | ILLINOIS FED. AID PROJECT | | | | |
| G:\jobs\12043\2013 CONSTRUCTION DRAWINGS\12043BASE-MADISON.dwg, MADISON STREET, 5/27/2013 11:07 AM, LARRY HOFFMAN, 1:1 | | | | SCALE: 1" = 30' | STA. MADISON STREET | | | | | |

| | | |
|------|---------|------|
| PLAN | SUPPVED | DATE |
| NO. | BY | |
| | | |
| | | |
| | | |
| | | |
| | | |
| | | |

| | |
|---------|------|
| PROFILE | DATE |
| NO. | BY |
| | |
| | |
| | |
| | |
| | |
| | |



- LEGEND**
- * - DETECTABLE WARNINGS
 - ▨ - PCC SIDEWALK, 4 INCH
 - ▩ - PCC SIDEWALK, 4 INCH (REMOVAL & REPLACEMENT)
 - ▧ - CROSSWALK STRIPING

| | | | |
|---|-------------|---------------------|-------------|
| FILE NAME = | USER NAME = | DESIGNED L. HOFFMAN | REVISED - - |
| G:\jobs\12043\2013 CONSTRUCTION DRAWINGS\12043BASE-KINZIE.dwg | | DRAWN K. WILLIAMS | REVISED - - |
| | | CHECKED L. HOFFMAN | REVISED - - |
| | | DATE - | REVISED - - |
| | | | |

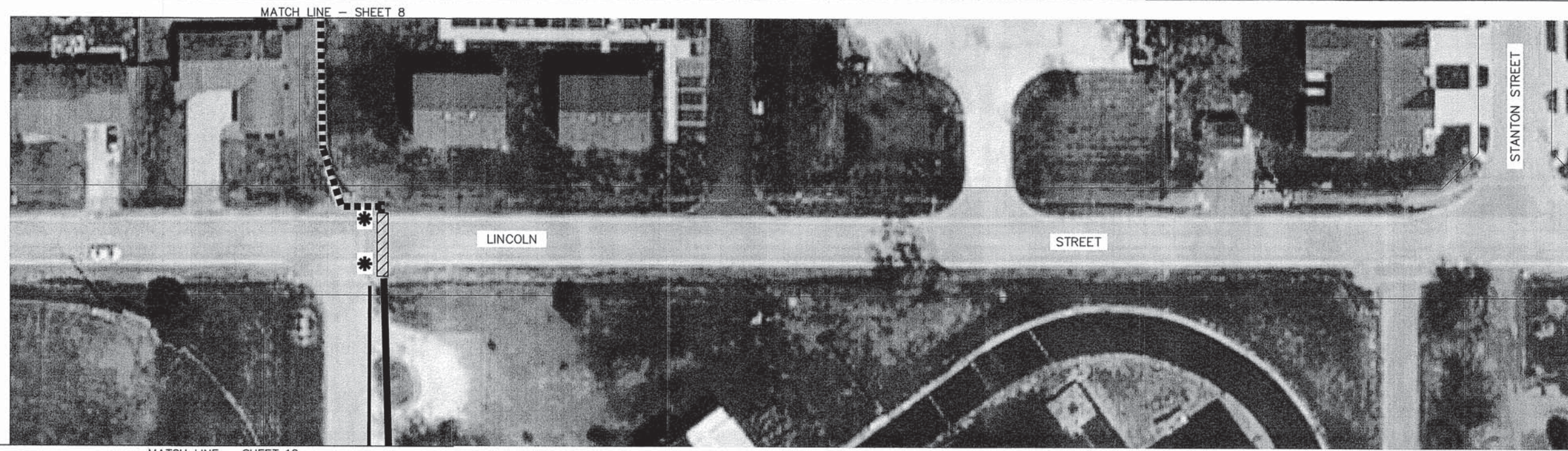
**STATE OF ILLINOIS
DEPARTMENT OF TRANSPORTATION**

**KINZIE STREET PLAN SHEET
SAFE ROUTES TO SCHOOL - RIVERTON, ILLINOIS**

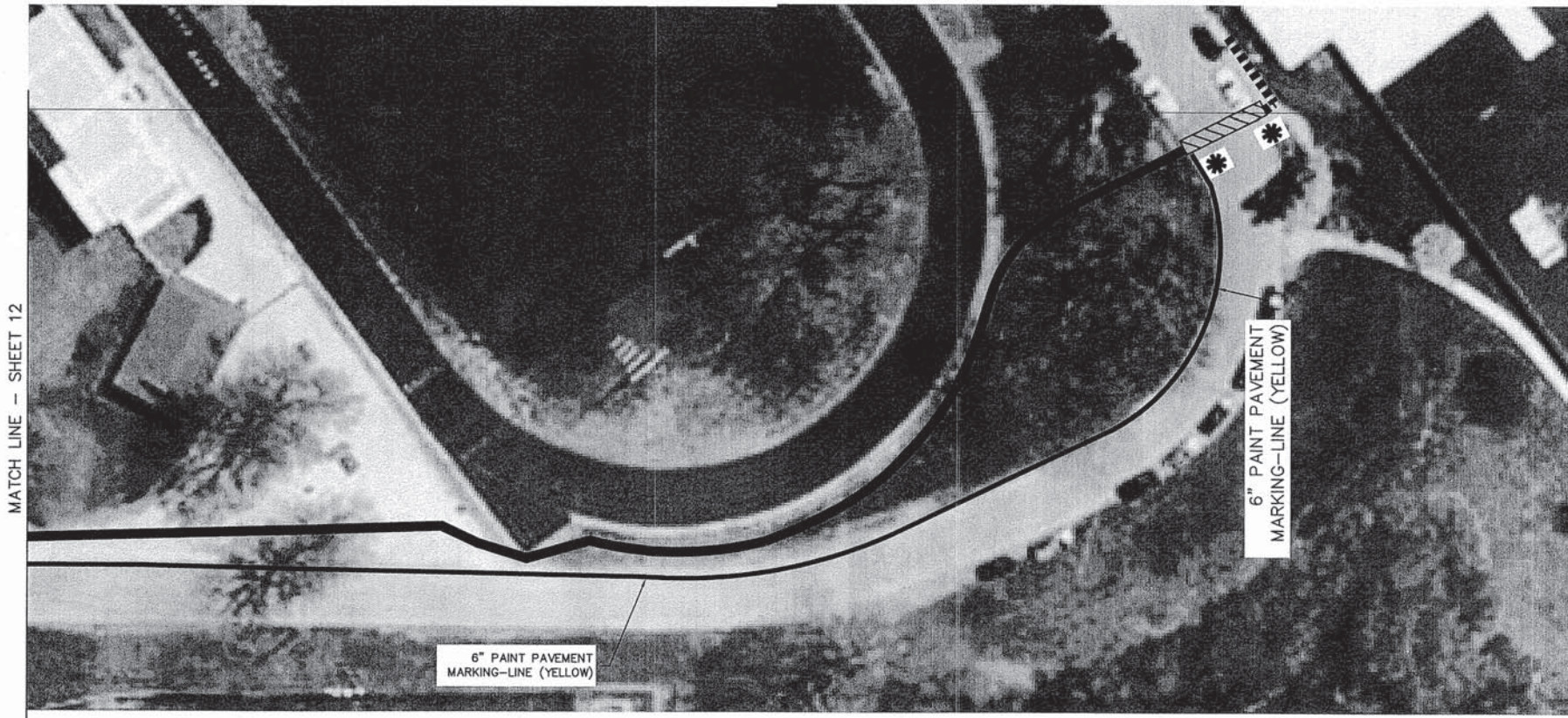
SCALE: 1" = 30' STA. KINZIE STREET

| | | | | |
|---------------------------|----------------|----------|--------------|-----------|
| F.A. RTE. | SECTION | CITY | TOTAL SHEETS | SHEET NO. |
| | 12-00023-00-SW | RIVERTON | 13 | 11 |
| CONTRACT NO. 93605 | | | | |
| ILLINOIS FED. AID PROJECT | | | | |

| | | |
|-------------|------|----|
| PLAN | DATE | BY |
| REVISIONS | | |
| NO. | | |
| DATE | | |
| BY | | |
| DESCRIPTION | | |
| 1 | | |
| 2 | | |
| 3 | | |
| 4 | | |
| 5 | | |
| 6 | | |
| 7 | | |
| 8 | | |
| 9 | | |
| 10 | | |
| 11 | | |
| 12 | | |
| 13 | | |
| 14 | | |
| 15 | | |
| 16 | | |
| 17 | | |
| 18 | | |
| 19 | | |
| 20 | | |
| 21 | | |
| 22 | | |
| 23 | | |
| 24 | | |
| 25 | | |
| 26 | | |
| 27 | | |
| 28 | | |
| 29 | | |
| 30 | | |
| 31 | | |
| 32 | | |
| 33 | | |
| 34 | | |
| 35 | | |
| 36 | | |
| 37 | | |
| 38 | | |
| 39 | | |
| 40 | | |
| 41 | | |
| 42 | | |
| 43 | | |
| 44 | | |
| 45 | | |
| 46 | | |
| 47 | | |
| 48 | | |
| 49 | | |
| 50 | | |



| | | |
|-------------|------|----|
| PROFILE | DATE | BY |
| REVISIONS | | |
| NO. | | |
| DATE | | |
| BY | | |
| DESCRIPTION | | |
| 1 | | |
| 2 | | |
| 3 | | |
| 4 | | |
| 5 | | |
| 6 | | |
| 7 | | |
| 8 | | |
| 9 | | |
| 10 | | |
| 11 | | |
| 12 | | |
| 13 | | |
| 14 | | |
| 15 | | |
| 16 | | |
| 17 | | |
| 18 | | |
| 19 | | |
| 20 | | |
| 21 | | |
| 22 | | |
| 23 | | |
| 24 | | |
| 25 | | |
| 26 | | |
| 27 | | |
| 28 | | |
| 29 | | |
| 30 | | |
| 31 | | |
| 32 | | |
| 33 | | |
| 34 | | |
| 35 | | |
| 36 | | |
| 37 | | |
| 38 | | |
| 39 | | |
| 40 | | |
| 41 | | |
| 42 | | |
| 43 | | |
| 44 | | |
| 45 | | |
| 46 | | |
| 47 | | |
| 48 | | |
| 49 | | |
| 50 | | |



- LEGEND**
- DETECTABLE WARNINGS
 - PCC SIDEWALK, 4 INCH
 - PCC SIDEWALK, 4 INCH (REMOVAL & REPLACEMENT)
 - CROSSWALK STRIPING

| | | | |
|--|------------------------|---------------------|------------|
| FILE NAME = | USER NAME = | DESIGNED L. HOFFMAN | REVISED -- |
| G:\Jobs\12043\2013 CONSTRUCTION DRAWINGS\12043BASE-OFFROAD.dwg | | DRAWN K. WILLIAMS | REVISED -- |
| | PLOT SCALE = 1" = .22' | CHECKED L. HOFFMAN | REVISED -- |
| | PLOT DATE = 5/30/2013 | DATE -- | REVISED -- |

**STATE OF ILLINOIS
DEPARTMENT OF TRANSPORTATION**

**LINCOLN STREET PLAN SHEET
SAFE ROUTES TO SCHOOL - RIVERTON, ILLINOIS**

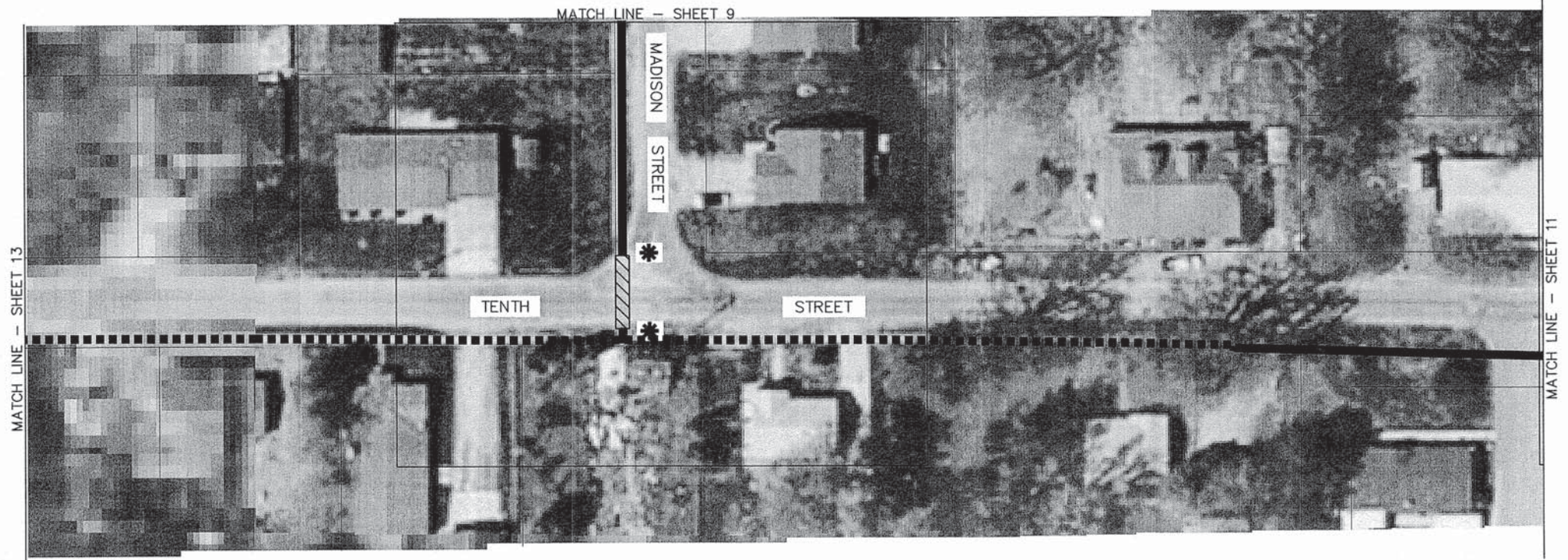
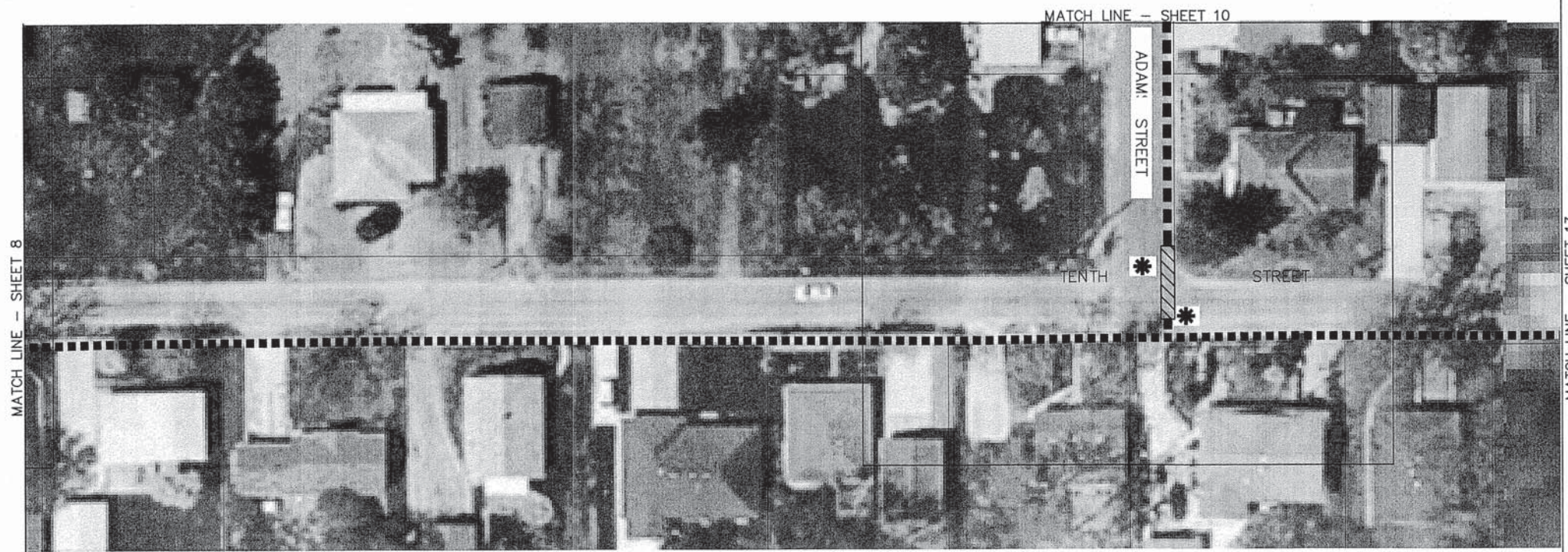
SCALE: 1" = 30'

STA. OFF ROAD

| F.A. RTE. | SECTION | CITY | TOTAL SHEETS | SHEET NO. |
|---------------------------|----------------|----------|--------------------|-----------|
| | 12-00023-00-SW | RIVERTON | 13 | 12 |
| | | | CONTRACT NO. 93605 | |
| ILLINOIS FED. AID PROJECT | | | | |

| | | | |
|-----------|-----------|----|------|
| PLAN | SURVEYED | BY | DATE |
| NOTE BOOK | ALIGNED | | |
| NO. | CHECKED | | |
| | BY | | |
| | FILE NAME | | |

| | | | |
|-----------|-----------|----|------|
| PROFILE | SURVEYED | BY | DATE |
| NOTE BOOK | ALIGNED | | |
| NO. | CHECKED | | |
| | BY | | |
| | FILE NAME | | |



- LEGEND**
- * - DETECTABLE WARNINGS
 - PCC SIDEWALK, 4 INCH
 - PCC SIDEWALK, 4 INCH (REMOVAL & REPLACEMENT)
 - ▨ - CROSSWALK STRIPING

NOTE: COORDINATE EXACT LOCATION OF RADAR SPEED SIGN WITH THE VILLAGE.

| | | | | | | | | | | | |
|--|--------------------|---------------------|------------|---|---|-------------------|----------------|----------|------|--------------|-----------|
| FILE NAME = | USER NAME = | DESIGNED L. HOFFMAN | REVISED -- | STATE OF ILLINOIS DEPARTMENT OF TRANSPORTATION | SEVENTH STREET (SOUTH) PLAN SHEET SAFE ROUTES TO SCHOOL - RIVERTON, ILLINOIS | | F.A. R.T.E. | SECTION | CITY | TOTAL SHEETS | SHEET NO. |
| G:\jobs\12043\2013 CONSTRUCTION DRAWINGS\12043BASE-SEVENTH AND TENTH.dwg | AND TENTH.dwg | DRAWN K. WILLIAMS | REVISED -- | | SCALE: 1" = 30' | STA. TENTH STREET | 12-00023-06-SW | RIVERTON | 13 | 13 | |
| PLOT SCALE = 1" = .22' | CHECKED L. HOFFMAN | REVISED -- | | | CONTRACT NO. 93605 | | | | | | |
| PLOT DATE = 5/27/2013 | DATE -- | REVISED -- | | | ILLINOIS FED. AID PROJECT | | | | | | |