

**INDEX OF SHEETS**

SHEET NO.	DESCRIPTION
1	TITLE SHEET & SUMMARY OF QUANTITIES
2	PLAN & PROFILE, TYPICAL SECTIONS, GENERAL NOTES & STONE RIPRAP DITCH DESIGN
3-4	ROADWAY CROSS SECTIONS
5-13	BRIDGE DESIGN

**THE FOLLOWING STANDARDS ARE A PART OF THESE PLANS AND ARE INCLUDED IN THE PROPOSAL:**

000001-06	STANDARD SYMBOLS, ABBREVIATIONS & PATTERNS
280001-07	TEMPORARY EROSION CONTROL SYSTEMS
515001-03	NAME PLATE FOR BRIDGES
542301-03	PRECAST REINFORCED CONCRETE FLARED END SECTION
701901-02	TRAFFIC CONTROL DEVICES
B.L.R. 21-9	TYPICAL APPLICATION OF TRAFFIC CONTROL DEVICES FOR CONSTRUCTION ON RURAL LOCAL HIGHWAYS
B.L.R. 22-7	TYPICAL APPLICATION OF TRAFFIC CONTROL DEVICES FOR CONSTRUCTION ON RURAL LOCAL HIGHWAYS (TWO-LANE TWO-WAY RURAL TRAFFIC) (ROAD CLOSED TO THRU TRAFFIC)

**SUMMARY OF QUANTITIES**

CODE NO.	ITEM	UNIT	QUANTITY
20100110	TREE REMOVAL (6 TO 15 UNITS DIAMETER)	UNIT	30.00
20100210	TREE REMOVAL (OVER 15 UNITS DIAMETER)	UNIT	35.00
20200100	EARTH EXCAVATION	CU YD	168.00
20300100	CHANNEL EXCAVATION	CU YD	185.00
20400800	FURNISHED EXCAVATION	CU YD	404.00
28100807	STONE DUMPED RIPRAP, CLASS A4	TON	595.00
40200800	AGGREGATE SURFACE COURSE, TYPE B	TON	330.00
50100100	REMOVAL OF EXISTING STRUCTURES	EACH	1.00
50105220	PIPE CULVERT REMOVAL	FOOT	18.00
50300225	CONCRETE STRUCTURES	CU YD	22.80
50300280	CONCRETE ENCASEMENT	CU YD	2.80
50400405	PRECAST PRESTRESSED CONCRETE DECK BEAMS (21" DEPTH)	SQ FT	1200.00
50800105	REINFORCEMENT BARS	POUND	2420.00
▲ 50900205	STEEL RAILING, TYPE S1	FOOT	97.00
51201400	FURNISHING STEEL PILES 10X42	FOOT	320.00
51202305	DRIVING PILES	FOOT	320.00
51500100	NAME PLATES	EACH	1.00
54241063	PIPE CULVERTS, CLASS A, TYPE 2 18"	FOOT	40.00
54213663	PRECAST REINFORCED CONCRETE FLARED END SECTIONS 18"	EACH	2.00
67100100	MOBILIZATION	L SUM	1.00
*X2501000	SEEDING, CLASS 2 (SPECIAL)	ACRE	0.40
*20068900	STONE LINED DITCH	TON	155.00

**▲ SPECIALTY ITEMS**

DESIGN DESIGNATION:  
 DESIGN SPEED: 30 MPH  
 HIGHWAY CLASS - LOCAL ROAD  
 EXISTING STRUCTURE NO.: 097-3059  
 PROPOSED STRUCTURE NO.: 097-3278  
 CURRENT A.D.T. = 50  
 CONTRACT NO. 99501



**STATE OF ILLINOIS**

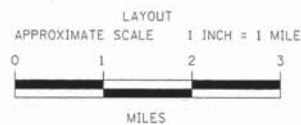
**DEPARTMENT OF TRANSPORTATION**

**PLANS FOR PROPOSED FEDERAL AID - S.T.P. BRIDGE**

**T.R. 120 WHITE COUNTY SECTION 09-08142-00-BR**

**PROJECT NO. BROS-0193(056) JOB NO. C-99-519-10**

**CONTRACT # 99501 INDIAN CREEK**

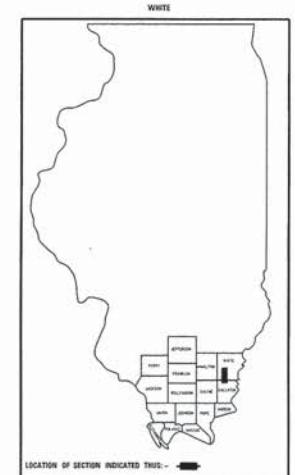


GROSS LENGTH	510.00 FT	0.097 MILES
OMISSIONS	0.00 FT	0.000 MILES
NET LENGTH	510.00 FT	0.097 MILES

TR	SECTION	COUNTY	TOTAL SHEETS	SHEET NO.
120	09-08142-00-BR	WHITE	13	1

FED. ROAD DIST. NO. 9 ILLINOIS FED. AID PROJECT  
 PROJECT # BROS-0193(056) CONTRACT # 99501  
 JOB # C-99-519-10 INDIAN CREEK  
 LEC JOB # H12L006WH

323 W. 3RD ST.  
 P.O. BOX 180  
 MT. CARMEL, IL 62863  
 PHONE: (618)-262-8651  
 FAX: (618)-263-3327



PROFESSIONAL DESIGN FIRM  
 LAND SURVEY & PROFESSIONAL ENGINEERING CORPORATION  
 184-00887  
 (62-032435)(35-002769)



AARON M. MEFFORD  
 NAME  
 SIGNATURE  
 DATE  
 5-21-13  
 11-30-13 EXPIRES

PLAN	1" = 50'	0 50' 100'
PROFILE	1" = 50'	0 50' 100'
PROFILE VERT.	1" = 5'	0 5' 10'
CROSS SECTION	1" = 5'	0 5' 10'

SECTION 09-08142-00-BR BEGINS STATION 2+40

STATION 5+00, STRUCTURE NO. 097-3278  
 A 50' LONG SINGLE SPAN PRECAST PRESTRESSED CONCRETE DECK BEAM BRIDGE (21" DEPTH), 24' ROADWAY, 0.00% GRADE, 15° RT. FWD. SKEW.

SECTION 09-08142-00-BR ENDS STATION 7+50

STATE OF ILLINOIS  
 DEPARTMENT OF TRANSPORTATION

APPROVED May 1st, 2013  
Brian G. Ray  
 COUNTY ENGINEER

PASSED MAY 30, 2013  
Dani W. Hill  
 ENGINEER OF LOCAL ROADS AND STREETS

RELEASING FOR BID  
 BASED ON LIMITED REVIEW: MAY 30, 2013  
Jeffrey L. Keirn  
 JEFFREY L. KEIRN, P.E.  
 ACTING DEPUTY DIRECTOR OF HIGHWAYS  
 REGION FIVE ENGINEER

TOWNSHIP ROUTE 120  
 OVER INDIAN CREEK  
 WHITE COUNTY, ILLINOIS

SHEET TITLE:  
 TITLE SHEET

SCALE: VARS

BY: AMM  
 DATE: 5/21/13  
 REV:

1 OF 13 SHEETS

SHEET NO.  
 1

**GENERAL NOTES:**

THIS SECTION SHALL BE CONSTRUCTED IN ACCORDANCE WITH THE PLANS, SPECIAL PROVISIONS AND "STANDARD SPECIFICATIONS FOR ROAD AND BRIDGE CONSTRUCTION", ADOPTED JANUARY 1, 2012.

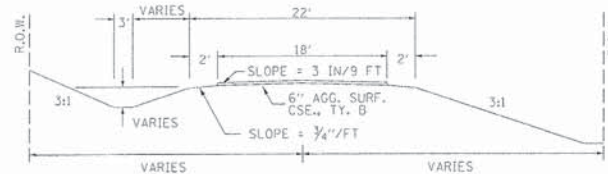
THE WORK INVOLVED ON THIS SECTION CONSISTS OF THE REMOVAL OF THE EXISTING STRUCTURE, THE CONSTRUCTION OF A 50 FOOT LONG SINGLE SPAN PRECAST, PRESTRESSED CONCRETE DECK BEAM BRIDGE, EARTH APPROACHES, AGGREGATE SURFACE COURSE AND OTHER MISCELLANEOUS ITEMS NECESSARY TO COMPLETE THIS SECTION.

ALL ELEVATIONS ARE BASED ON U.S.G.S. MEAN SEA LEVEL DATUM.

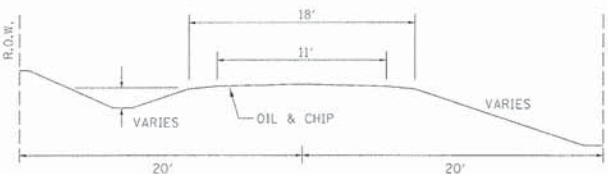
IT SHALL BE THE CONTRACTOR'S RESPONSIBILITY TO CONTACT ALL THE UTILITIES, AFFECTING THE PROJECT, PRIOR TO CONSTRUCTION.

AGGREGATE SURFACE COURSE, TYPE B INCLUDES 24 TON FOR FILL NEXT TO THE BRIDGE, 22 TON FOR THE FIELD ENTRANCE, AND 284 TON FOR THE ROADWAY.

**TYPICAL CROSS SECTION PROPOSED**



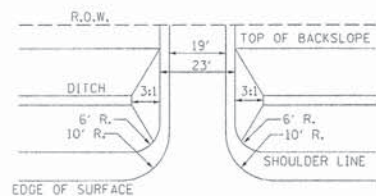
**TYPICAL CROSS SECTION EXISTING**



**UTILITIES:**

J.U.L.I.E. 1-800-892-0123  
WAYNE-WHITE ELECTRIC  
1-618-842-2196

**FIELD ENTRANCE DETAIL**



NOTE: CONSTRUCT SPECIAL DITCH

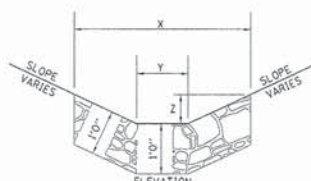
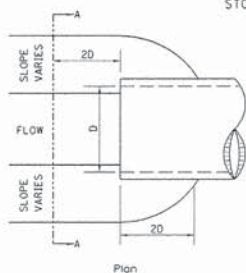
STA 2+50 TO STA 4+70 LT  
STA 2+50 TO STA 3+75 RT  
STA 5+30 TO STA 7+00 RT

NOTE: CONSTRUCT STONE LINED DITCH

STA 2+50 TO STA 3+75 RT (0.62 TON/LIN FT)  
STA 2+50 TO STA 3+75 LT (0.62 TON/LIN FT)  
155 TON STONE LINED DITCH ALLOWED IN PROPOSAL.

SEE STONE LINED DITCH DETAIL.

**STONE LINED DITCH DESIGN**



NOTE:

BOTTOM OF DITCH	SLOPE		
2 FT	1 1/2:1	2:1	3:1
5 FT	5 FT	6 FT	8 FT
Y+	2 FT	2 FT	2 FT
Z+	1 FT	1 FT	1 FT
	0.40	0.48	0.62 TON/LIN. FT

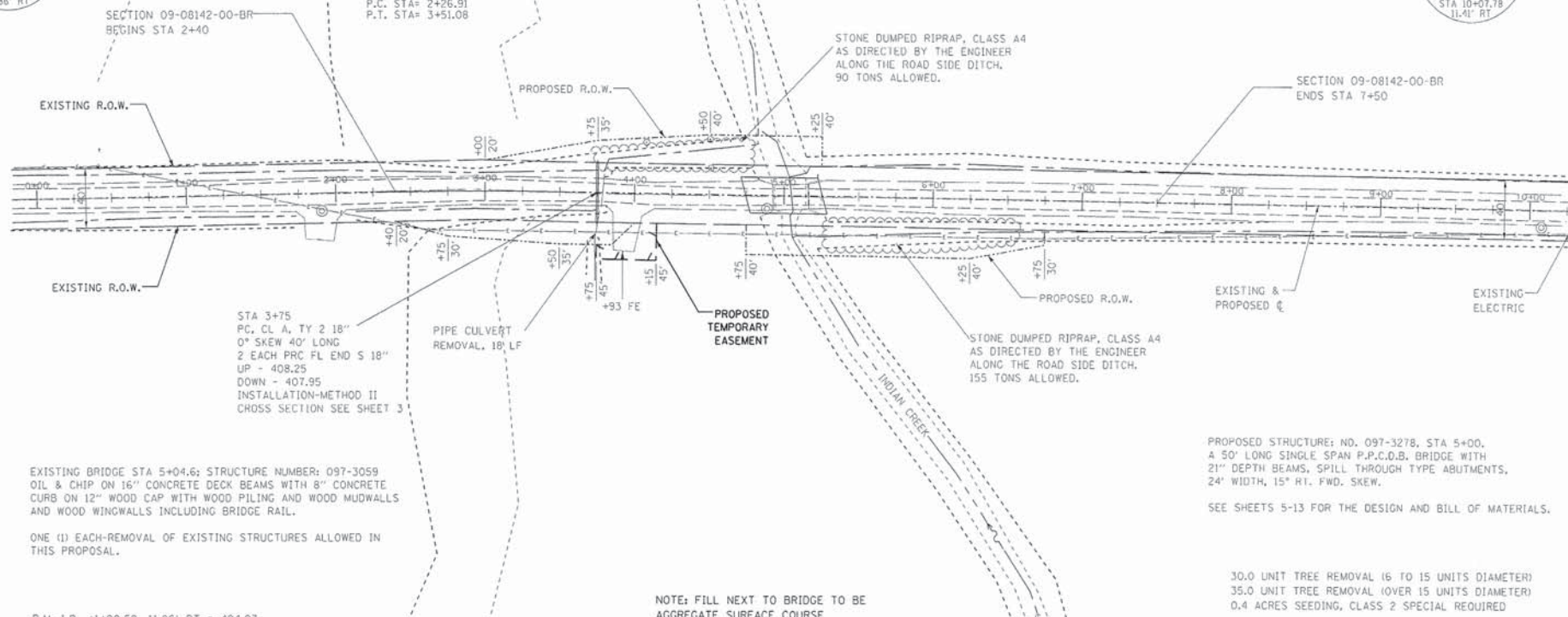
NOTE: FOR PLACEMENT, QUALITY GRADATION AND OTHER MISCELLANEOUS REQUIREMENTS FOR STONE LINED DITCH-SEE SPECIAL PROVISIONS.

NOTE: CONSTRUCTION TRANSITION  
STA. 2+40 TO STA 2+90  
STA 7+00 TO STA 7+50

ALL QUANTITIES ARE INCLUDED IN THE PROPOSAL



CURVE #1  
P.I. STA: 2+89.00  
Δ RT. 2°01'58"  
D= 1°38'13"  
R= 3500'  
T= 62.09'  
L= 124.17'  
E= 0.55'  
e= NONE  
T.R.= NONE  
S.E. RUN: NONE  
P.C. STA: 2+26.91  
P.T. STA: 3+51.08



EXISTING BRIDGE STA 5+04.6; STRUCTURE NUMBER: 097-3059  
OIL & CHIP ON 16" CONCRETE DECK BEAMS WITH 8" CONCRETE CURB ON 12" WOOD CAP WITH WOOD PILING AND WOOD MUDWALLS AND WOOD WINGWALLS INCLUDING BRIDGE RAIL.

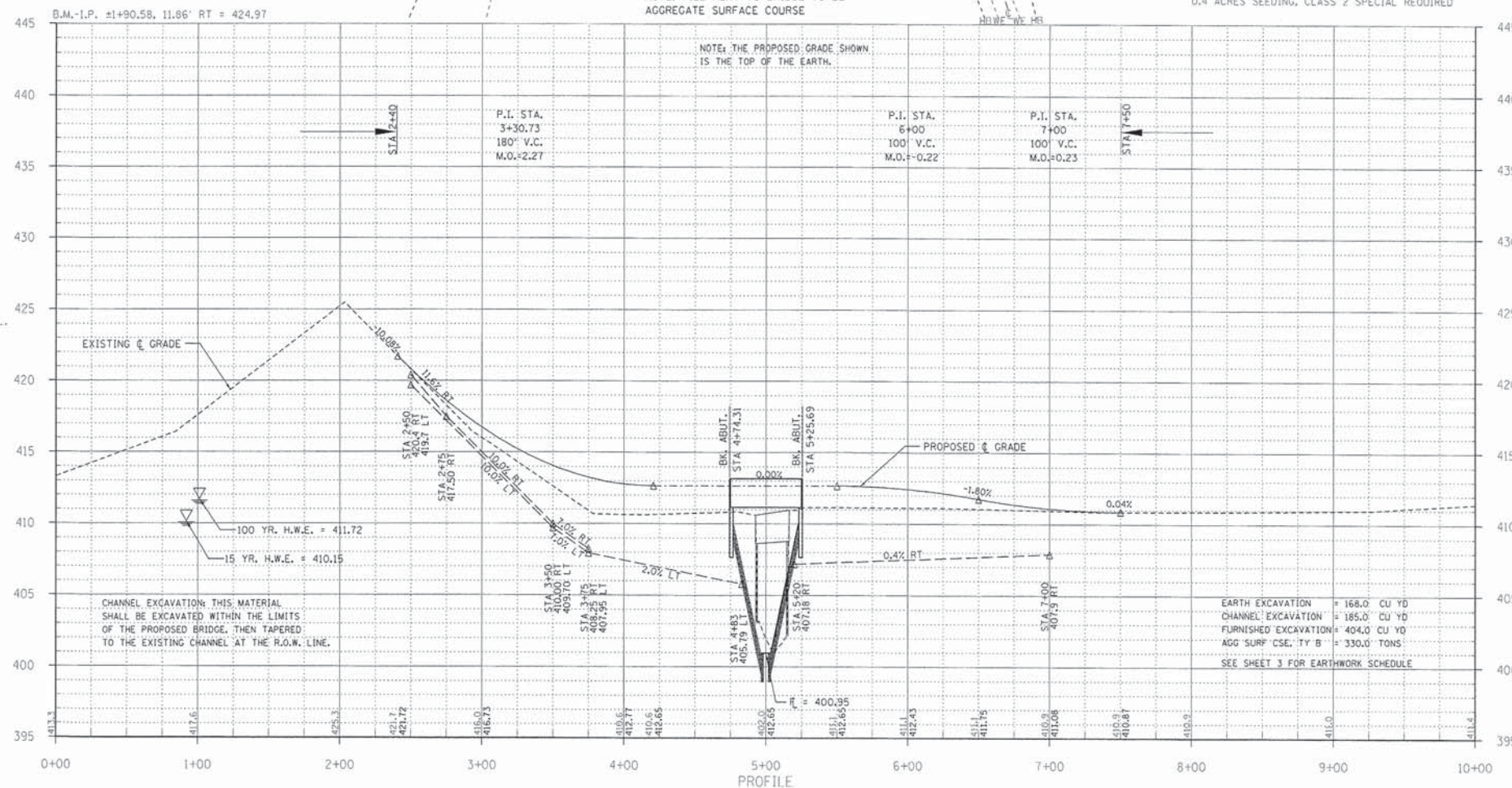
ONE (1) EACH-REMOVAL OF EXISTING STRUCTURES ALLOWED IN THIS PROPOSAL.

NOTE: FILL NEXT TO BRIDGE TO BE AGGREGATE SURFACE COURSE

PROPOSED STRUCTURE: NO. 097-3278, STA 5+00, A 50' LONG SINGLE SPAN P.P.C.O.B. BRIDGE WITH 21" DEPTH BEAMS, SPILL THROUGH TYPE ABUTMENTS, 24' WIDTH, 15' RT. FWD. SKEW.

SEE SHEETS 5-13 FOR THE DESIGN AND BILL OF MATERIALS.

30.0 UNIT TREE REMOVAL 16 TO 15 UNITS DIAMETER)  
35.0 UNIT TREE REMOVAL (OVER 15 UNITS DIAMETER)  
0.4 ACRES SEEDING, CLASS 2 SPECIAL REQUIRED



NOTE: THE PROPOSED GRADE SHOWN IS THE TOP OF THE EARTH.

CHANNEL EXCAVATION: THIS MATERIAL SHALL BE EXCAVATED WITHIN THE LIMITS OF THE PROPOSED BRIDGE, THEN TAPERED TO THE EXISTING CHANNEL AT THE R.O.W. LINE.

EARTH EXCAVATION = 168.0 CU YD  
CHANNEL EXCAVATION = 185.0 CU YD  
FURNISHED EXCAVATION = 404.0 CU YD  
AGG SURF CSE, TY B = 330.0 TONS  
SEE SHEET 3 FOR EARTHWORK SCHEDULE

TR	SECTION	COUNTY	TOTAL SHEETS	SHEET NO.
120	09-08142-00-BR	WHITE	13	2

323 W. 3RD ST.  
P.O. BOX 160  
MT. CARMEL, IL 62863  
PHONE: (618)-262-8651  
FAX: (618)-263-3327



PROFESSIONAL DESIGN FIRM  
LAND SURVEY & PROFESSIONAL ENGINEERING CORPORATION  
184-000887  
(62-032435)(05-002769)



AARON M. MEFFORD  
NAME  
SIGNATURE  
5-21-13  
DATE  
11-30-13  
EXPIRES

TOWNSHIP ROUTE 120  
OVER INDIAN CREEK  
WHITE COUNTY, ILLINOIS

SHEET TITLE:

PLAN & PROFILE

SCALE: VRES

BY: AMM

DATE: 5/13

REV:

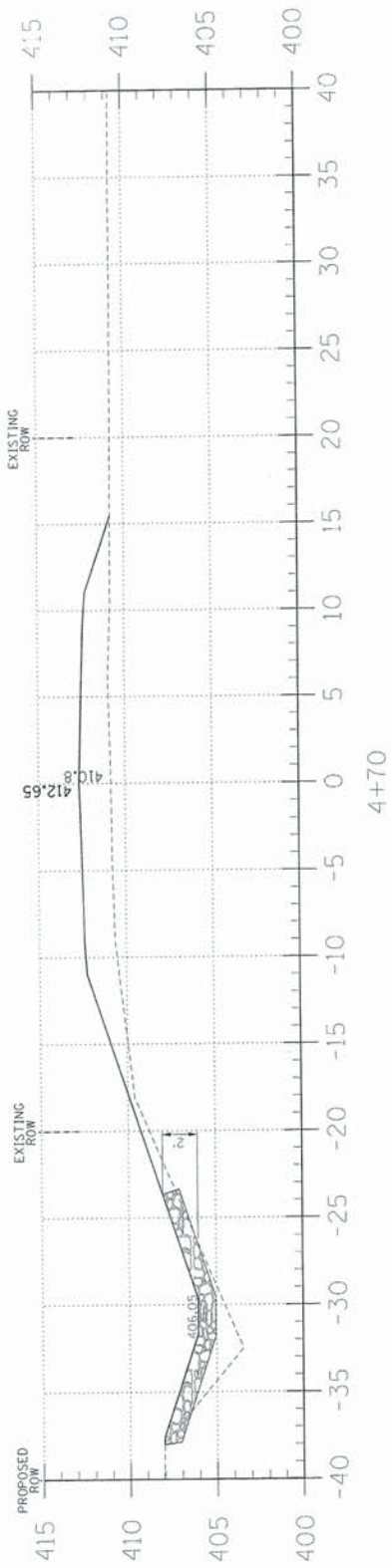
2 OF 13

SHEETS

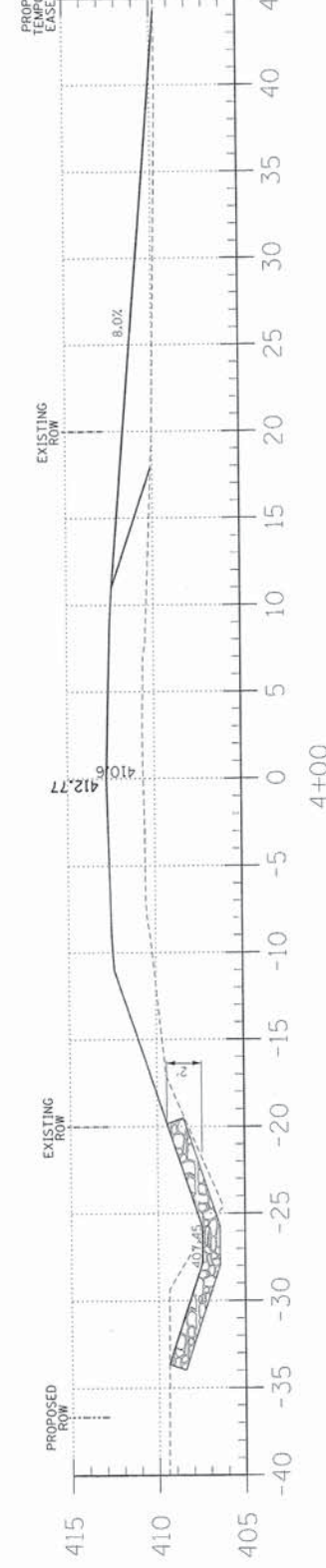
SHEET NO.

2

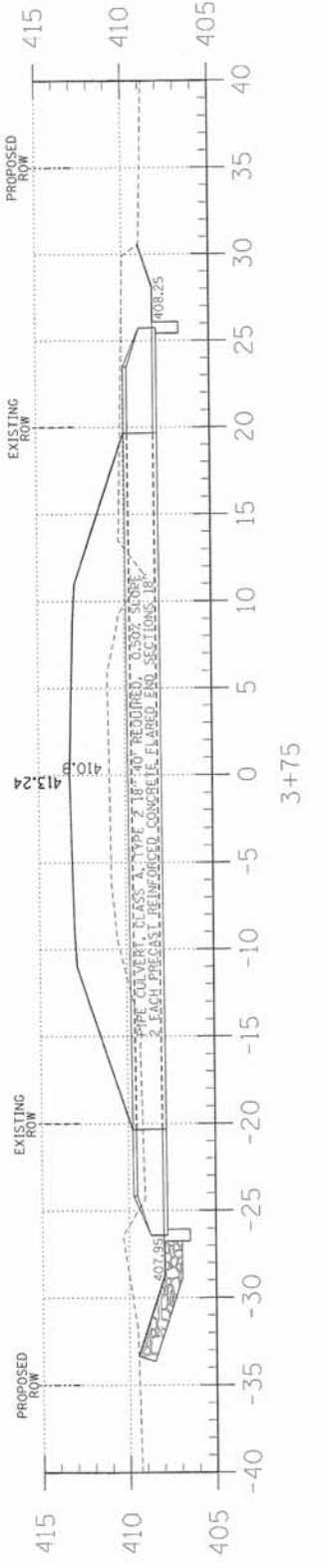
C = 0.0  
F = 59.5



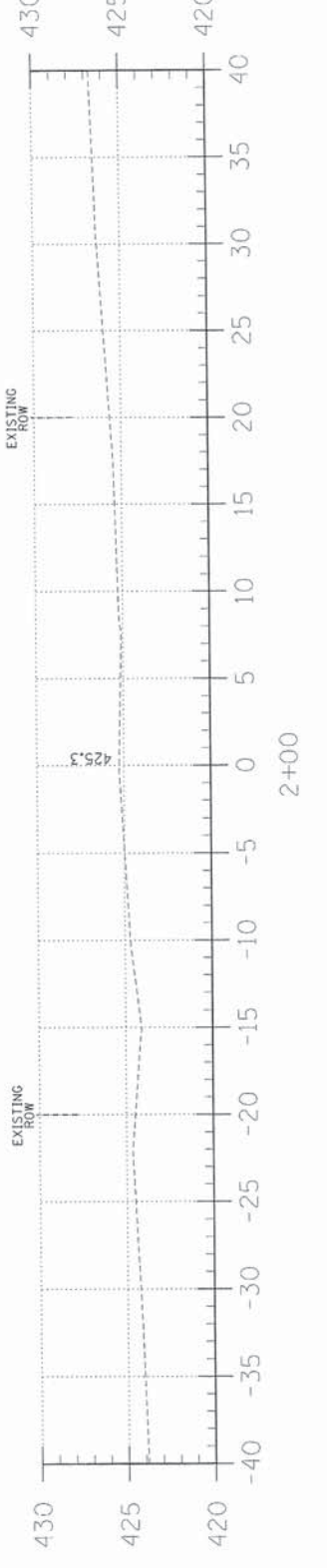
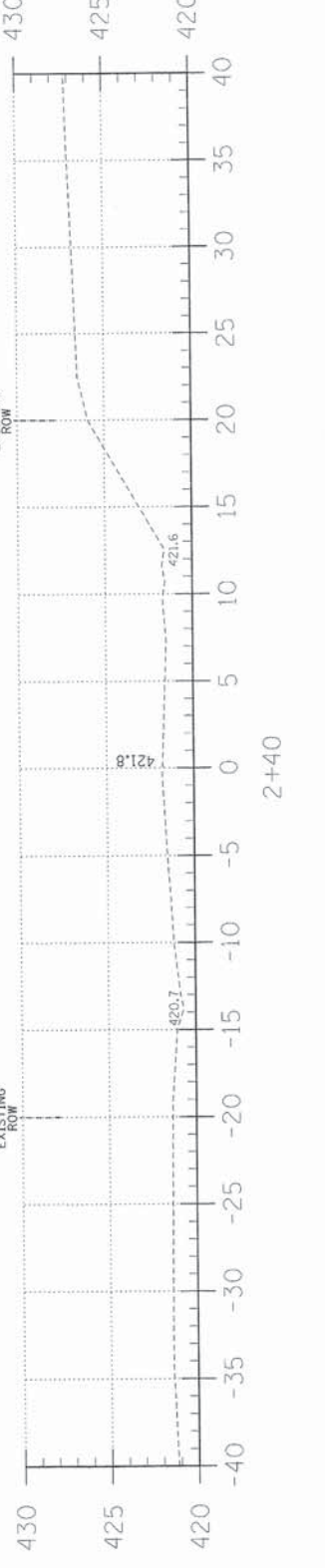
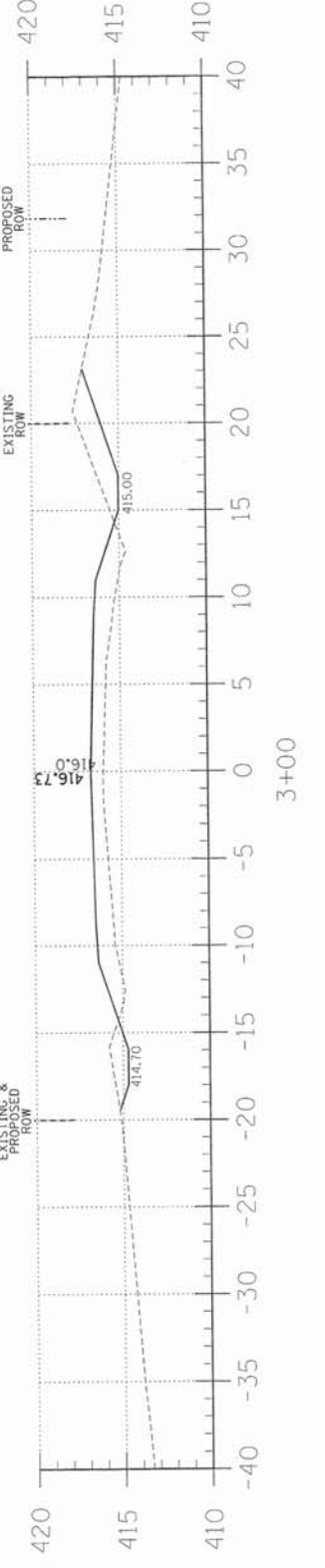
C = 5.6  
F = 66.9



C = 19.8  
F = 77.2



C = 11.6  
F = 24.6



EARTHWORK SCHEDULE

LOCATION	EARTH EXCAVATION	CHANNEL EXCAVATION	ESTIMATED UNSUITABLE MATERIAL	SUITABLE MATERIAL ADJUSTED FOR SHRINKAGE	EMBANKMENT	EARTHWORK BALANCE WASTE (+) OR SHORTAGE (-)
	CUBIC YARD	CUBIC YARD	CUBIC YARD	CUBIC YARD	CUBIC YARD	CUBIC YARD
STA. 0+00 TO 4+74.3	101.3	0.0	0.0	76.0	378.2	-302.2
STA. 4+74.3 TO 5+25.7	0.0	185.3	92.6	69.5	0.0	69.5
STA. 5+25.7 TO 10+00	66.3	0.0	0.0	49.7	194.9	-145.2
1 FIELD ENTRANCE	0.0	0.0	0.0	0.0	26.1	-26.1
TOTAL	167.6	185.3	92.6	69.5	599.2	-404.0

TOWNSHIP ROUTE 120  
OVER INDIAN CREEK  
WHITE COUNTY, ILLINOIS

SHEET TITLE:  
CROSS-SECTIONS  
SCALE: 1" = 5'  
BY: AMM  
DATE: 5/93  
REV:  
3 OF 13 SHEETS  
SHEET NO. 3

TR	SECTION	COUNTY	TOTAL SHEETS	SHEET NO.
120	09-08142-00-BR	WHITE	13	3
FED. ROAD DIST. NO. 9		ILLINOIS	FED. AID PROJECT	
PROJECT#		BROS-19310561	CONTRACT# 99501	
JOB NO.		C-99-519-10	INDIAN CREEK	

323 W. 3RD ST.  
P.O. BOX 190  
MT. CARMEL, IL  
62863  
PHONE:  
(618)-262-8651  
FAX:  
(618)-263-3327

405 W. STATE ST  
SUITE 1  
PRINCETON, IN  
47570  
PHONE:  
(812)-386-7611  
FAX:  
(812)-385-2812



PROFESSIONAL DESIGN FIRM  
LAND SURVEY &  
PROFESSIONAL  
ENGINEERING  
CORPORATION  
184-30087  
(62-032435)(35-002769)



AARON M. MEFFORD  
NAME  
SIGNATURE  
5-21-13  
DATE  
11-30-13  
EXPIRES

TR	SECTION	COUNTY	TOTAL SHEETS	SHEET NO.
120	09-08142-00-BR	WHITE	13	4
FED. ROAD DIST. NO. 9 ILLINOIS		FED. AID PROJECT		323 W. 3RD ST. P.O. BOX 160 MT. CARMEL, IL 62863
PROJECT# BR05#1931056		CONTRACT# 99501		PHONE: (618)-262-8651
JOB NO. C-99-519-10		INDIAN CREEK		FAX: (618)-263-3327
LEC JOB # HZ1L006WH				

405 W. STATE ST  
SUITE 1  
PRINCETON, IN  
47670  
PHONE:  
(812)-386-7611  
FAX:  
(812)-385-2812



PROFESSIONAL DESIGN FIRM  
LAND SURVEY &  
PROFESSIONAL  
ENGINEERING CORPORATION  
184-00087  
(62-032435)(35-002789)



AARON M. MEFFORD  
NAME  
SIGNATURE  
DATE  
5-21-13  
11-30-13  
EXPIRES

TOWNSHIP ROUTE 120  
OVER INDIAN CREEK  
WHITE COUNTY, ILLINOIS

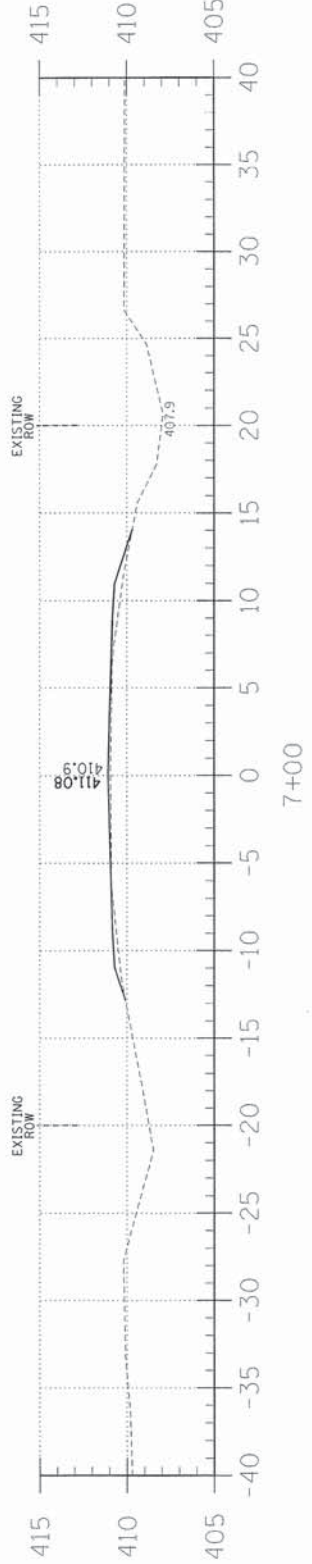
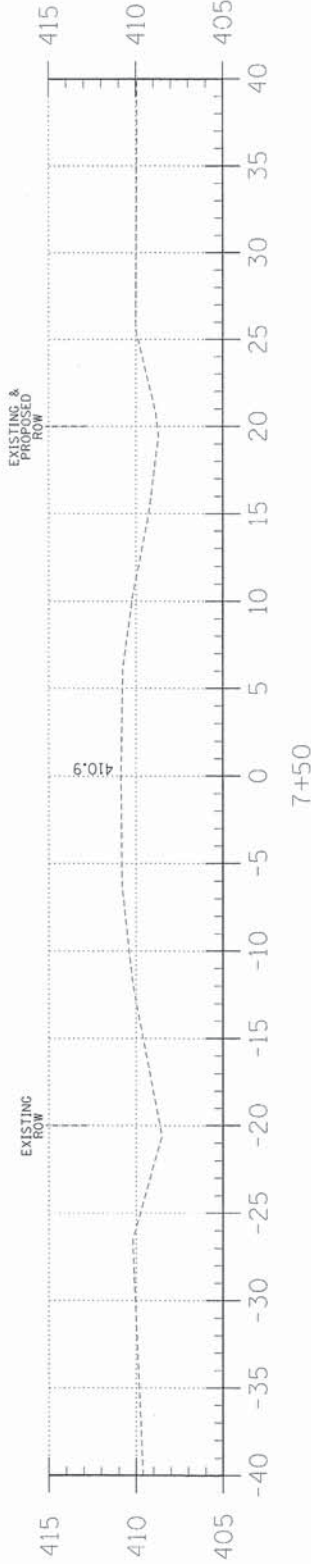
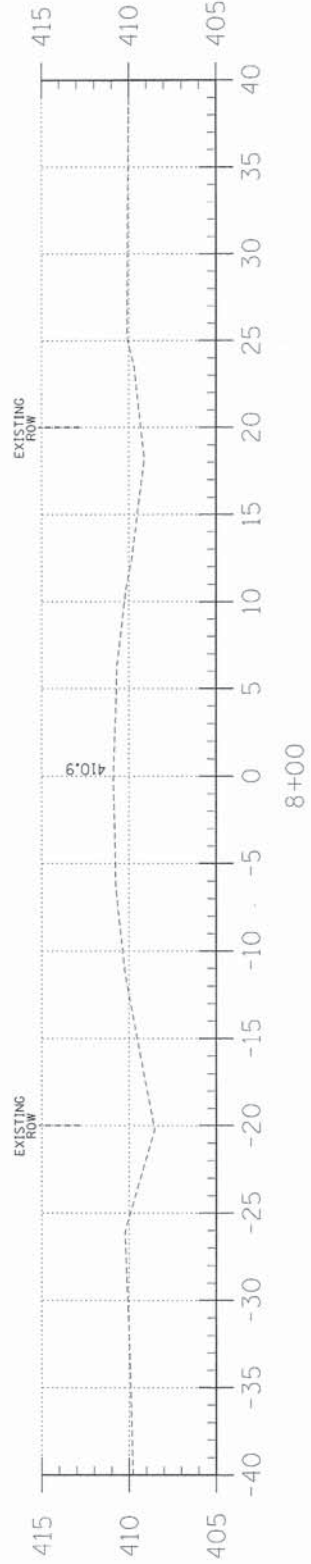
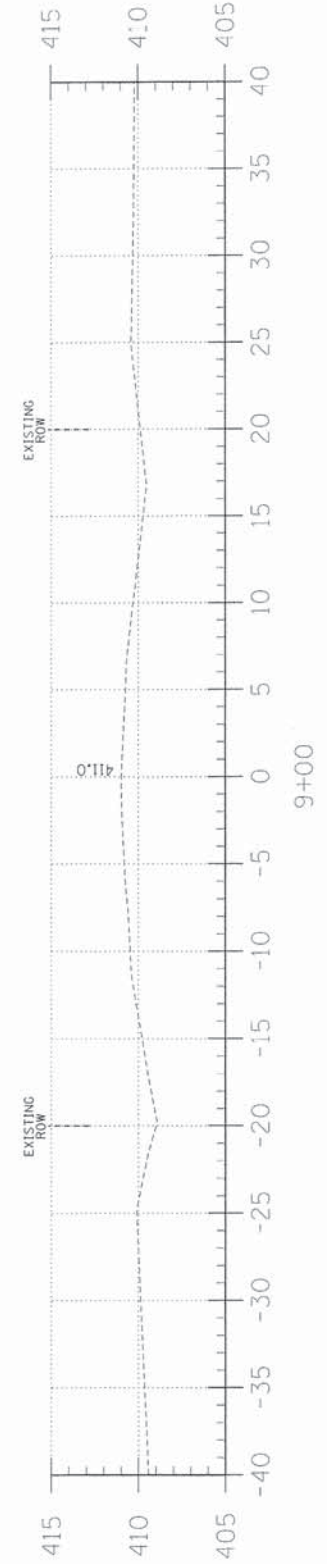
SHEET TITLE:

CROSS-SECTIONS

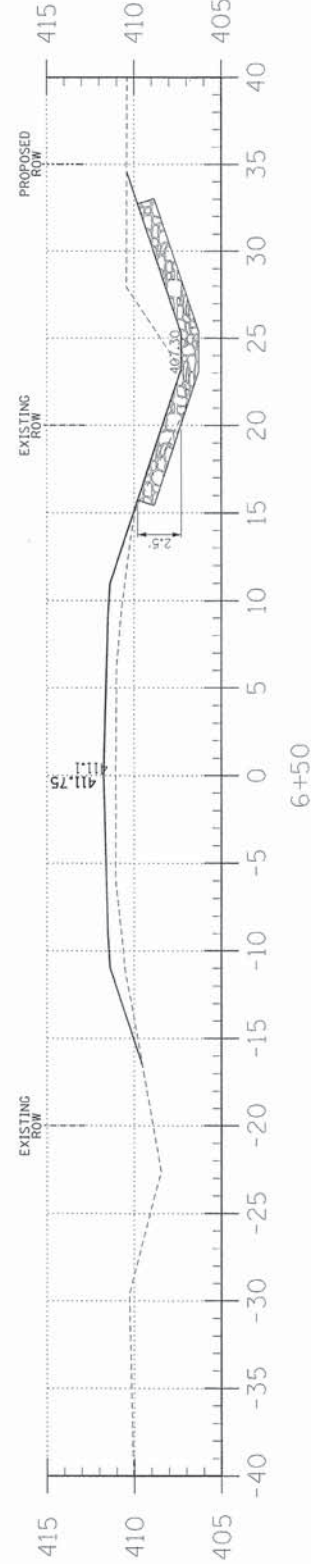
SCALE: 1" = 5'  
BY: AMM  
DATE: 5/21/13  
REV:

4 OF 13  
SHEETS

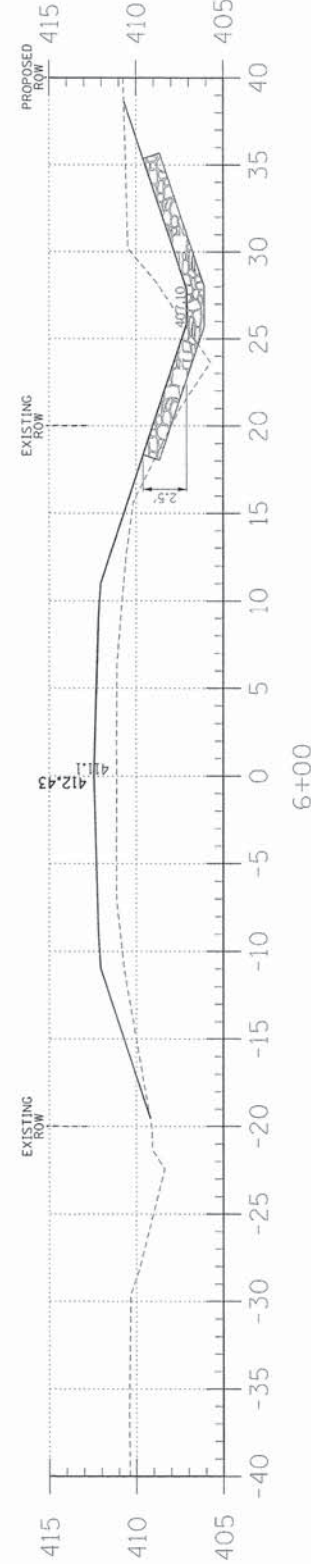
SHEET NO.  
4



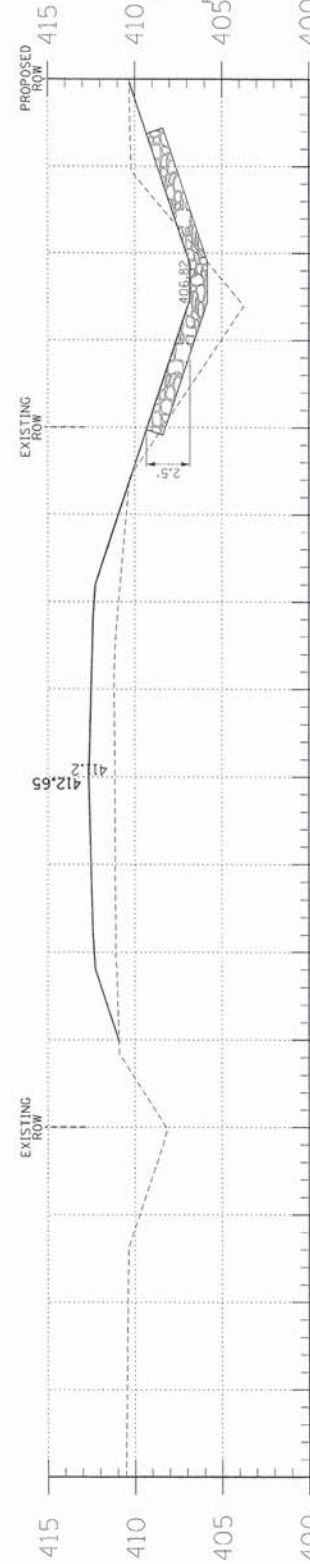
C = 0.0  
F = 4.1



C = 13.6  
F = 18.9



C = 17.3  
F = 40.1

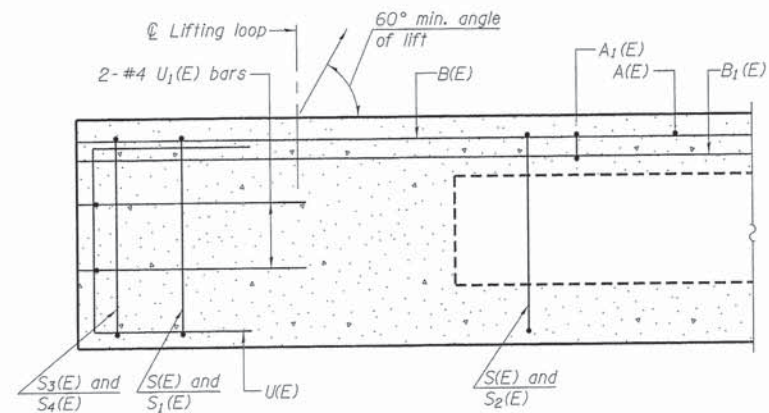


C = 0.0  
F = 4.1

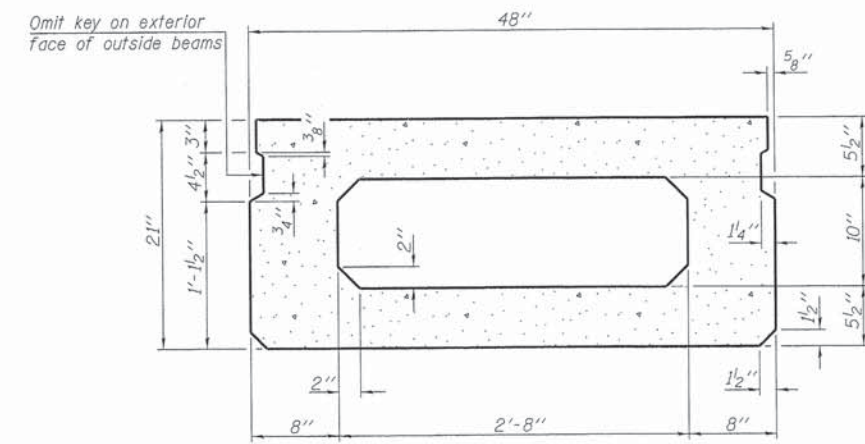
C = 13.6  
F = 18.9

C = 17.3  
F = 40.1

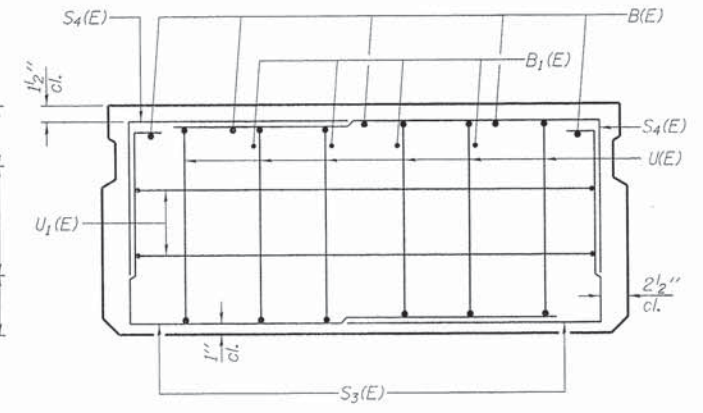




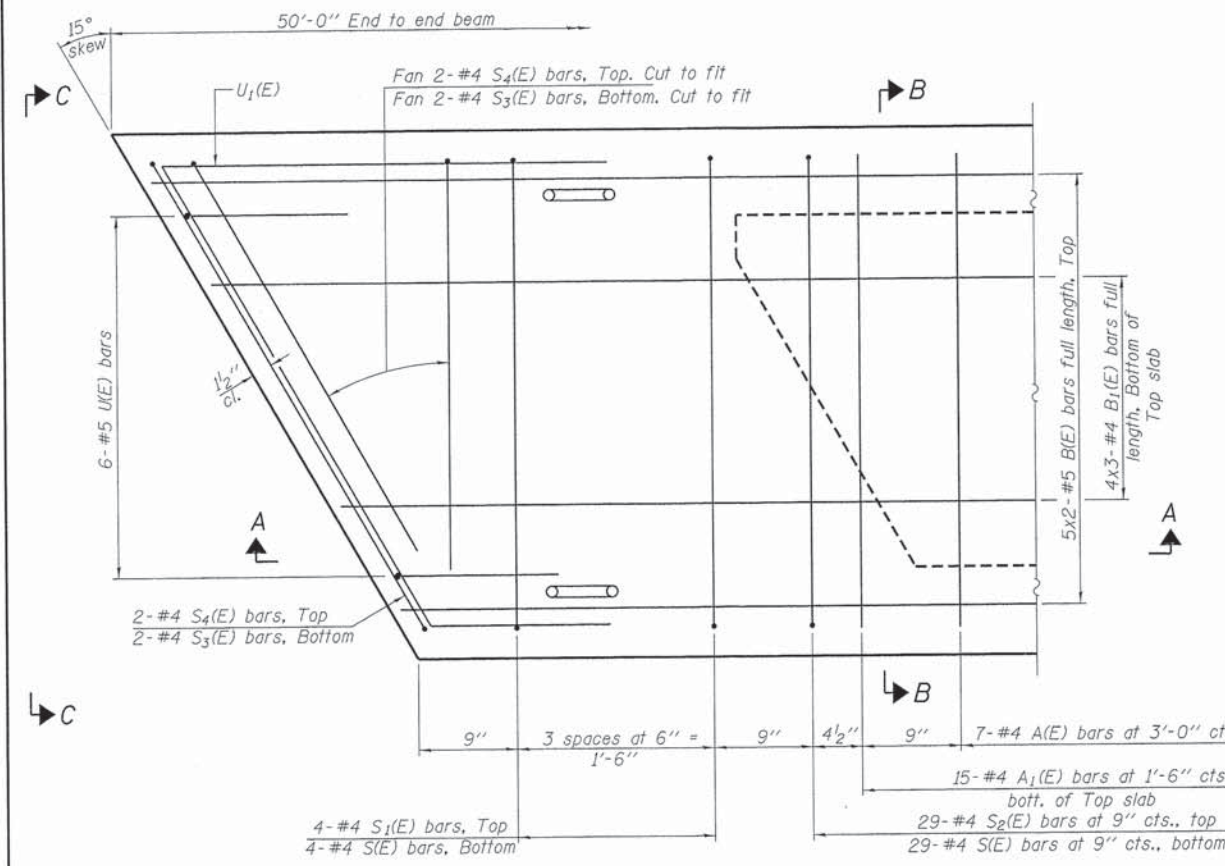
SECTION A-A



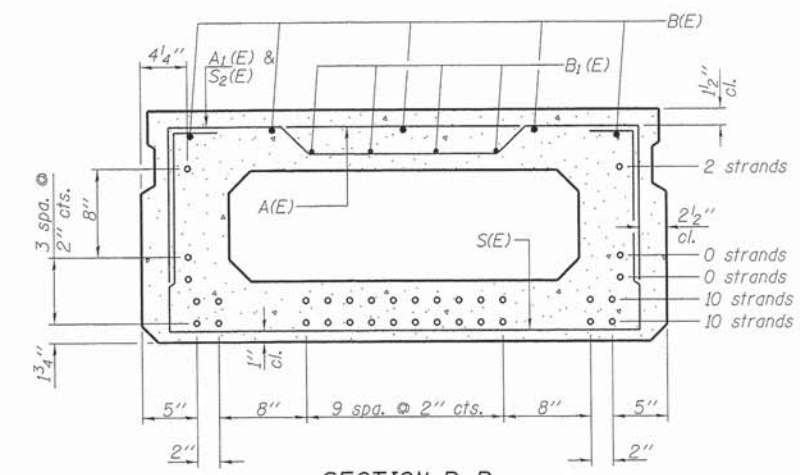
SECTION B-B  
(Showing dimensions)



VIEW C-C



PLAN VIEW



SECTION B-B

(Showing reinforcement and permissible strand locations)  
 Note: Place the number of strands specified in each row symmetrically about the centerline of beam in the permissible strand locations shown.

BAR LIST  
ONE BEAM ONLY  
(For information only)

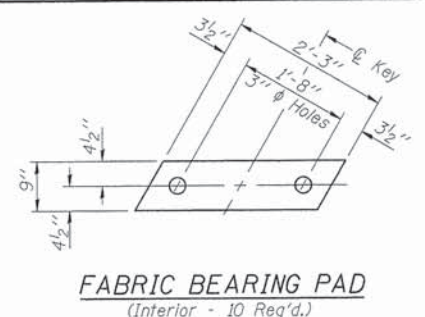
Bar	No.	Size	Length	Shape
A(E)	15	#4	3'-7"	—
A1(E)	30	#4	3'-10"	—
B(E)	10	#5	26'-2"	—
B1(E)	12	#4	17'-11"	—
S(E)	67	#4	7'-5"	⌋
S1(E)	8	#4	5'-11"	⌋
S2(E)	59	#4	6'-2"	⌋
S3(E)	8	#4	4'-8"	⌋
S4(E)	8	#4	3'-11"	⌋
U(E)	12	#5	4'-0"	⌋
U1(E)	4	#4	7'-1"	⌋

Note: See sheets 3 & 4 of 9 for additional details and Bill of Material.

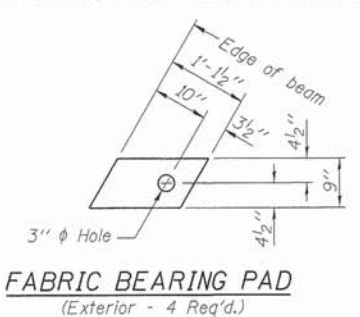
MINIMUM BAR LAP

#4 bar = 2'-0"  
 #5 bar = 2'-6"

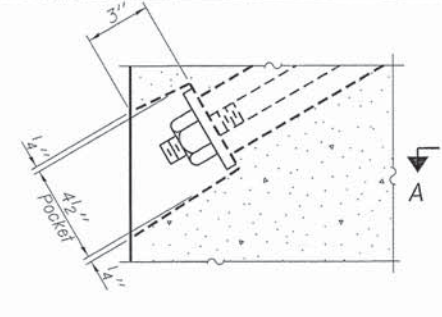
Note:  
 Spacing of S(E) and S2(E) bars may be adjusted up to 4" in the immediate area of the transverse tie diaphragms to miss the block outs for the transverse ties.  
 Bars indicated thus 5x2-#5 etc. indicates 5 lines of bars with 2 lengths per line.



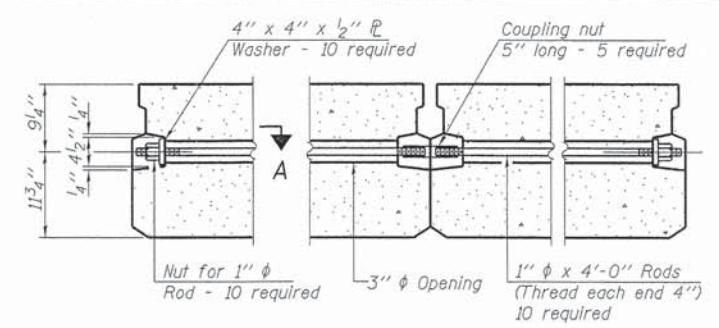
**FABRIC BEARING PAD**  
(Interior - 10 Req'd.)



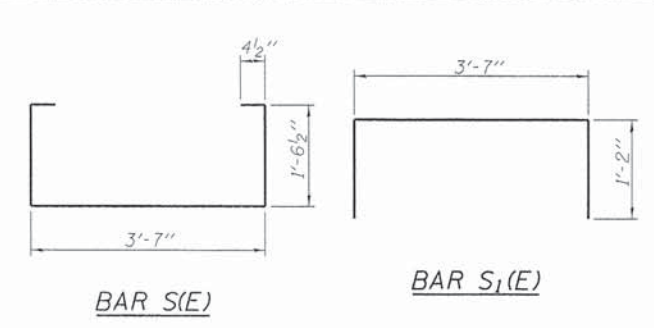
**FABRIC BEARING PAD**  
(Exterior - 4 Req'd.)



**SECTION A-A**

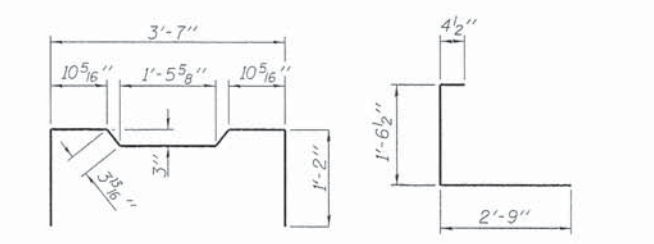


**TYPICAL TRANSVERSE TIE ASSEMBLY**



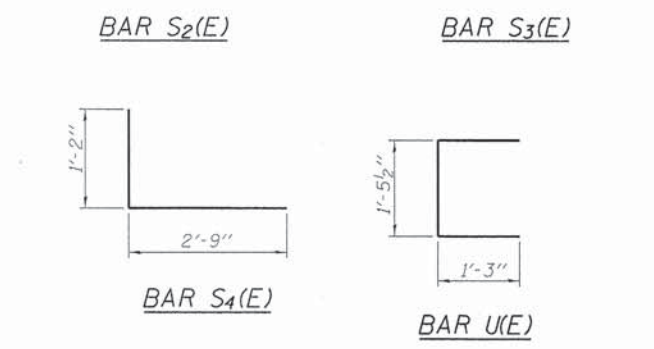
**BAR S(E)**

**BAR S1(E)**



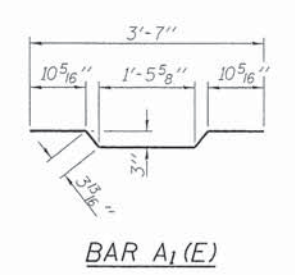
**BAR S2(E)**

**BAR S3(E)**

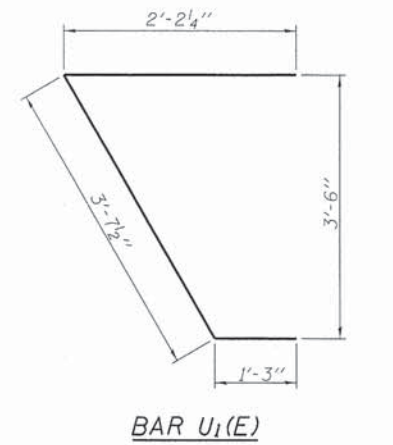


**BAR S4(E)**

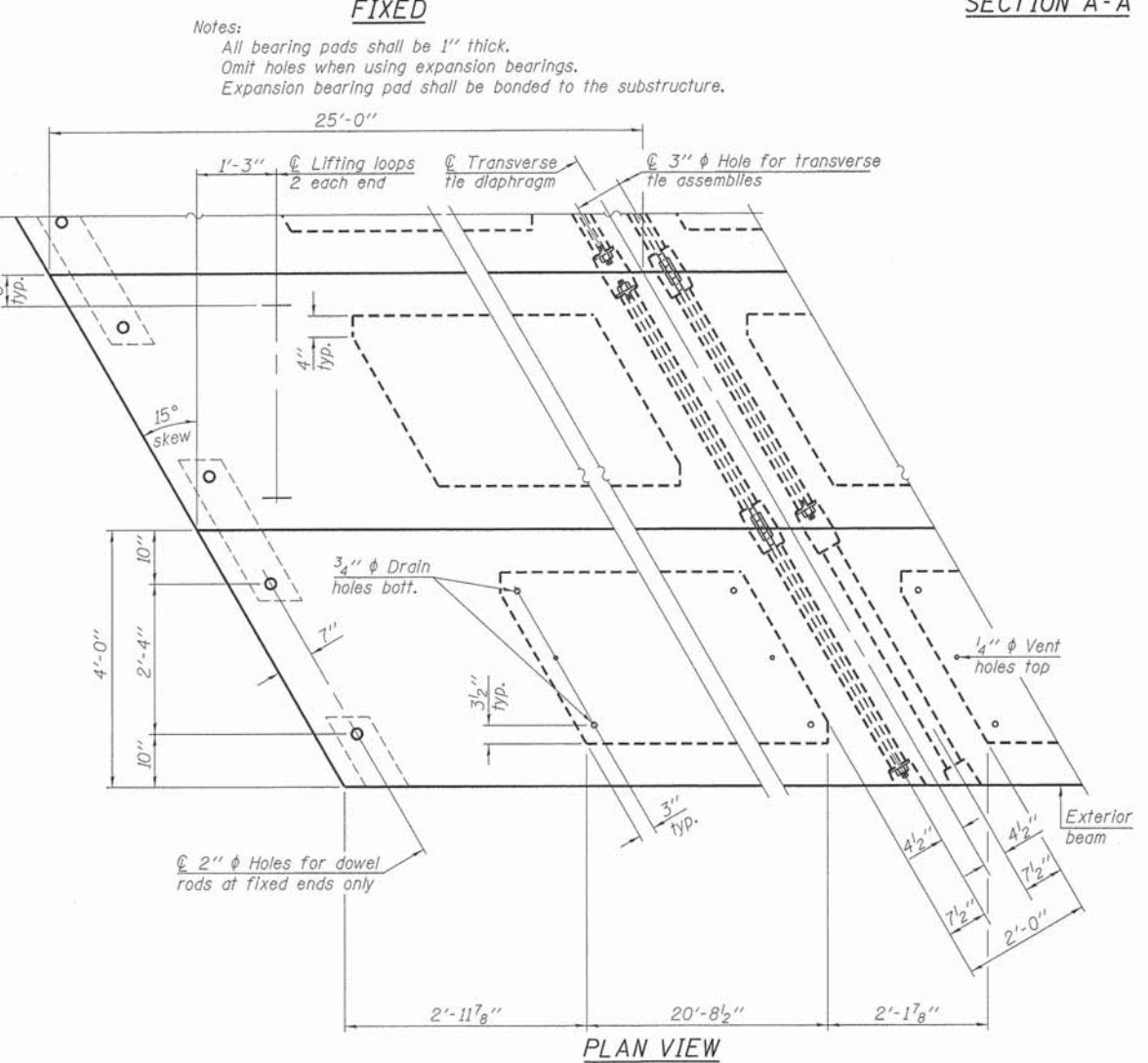
**BAR U(E)**



**BAR A1(E)**



**BAR U1(E)**

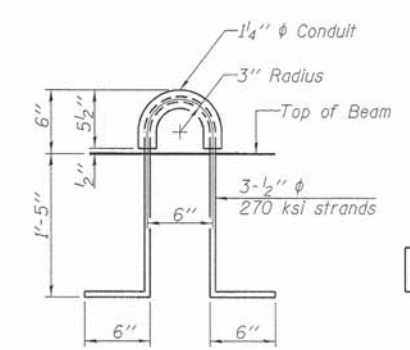


**PLAN VIEW**

Note: Connect beams in pairs with the transverse tie configuration shown.

**NOTES**

Prestressing steel shall be uncoated high strength, low relaxation 7-wire strand, Grade 270. The nominal diameter shall be 1/2" and the nominal cross-sectional area shall be 0.153 sq. in. The 1" rods in the transverse tie assembly shall be tightened to a snug fit and the threads set. Pockets on exterior faces of bridge shall be filled with grout after transverse tie assembly is in place.  
 Reinforcement bars shall conform to ASTM A 706, Grade 60. (See Special Provisions). Two 1/8" fabric adjusting shims of the dimensions of the exterior bearing pad shall be provided for each bearing pad location.  
 A minimum 2 1/2" diameter lifting pin shall be used to engage the lifting loops during handling.  
 Corrosion Inhibitor, per Article 1020.05(b)(12) and 1021.07 of the Standard Specifications, shall be used in the concrete for precast prestressed concrete deck beams.  
 Compressive strength of prestressed concrete, f'c, shall be 6000 psi.  
 Compressive strength of prestressed concrete at release, f'ci, shall be 5000 psi.  
 All reinforcement shall be epoxy coated.



**LIFTING LOOP DETAIL**

**BILL OF MATERIAL**

Precast Prestressed Conc. Deck Bms. (21" depth)	Sq. Ft.	1,200
---	---------	-------

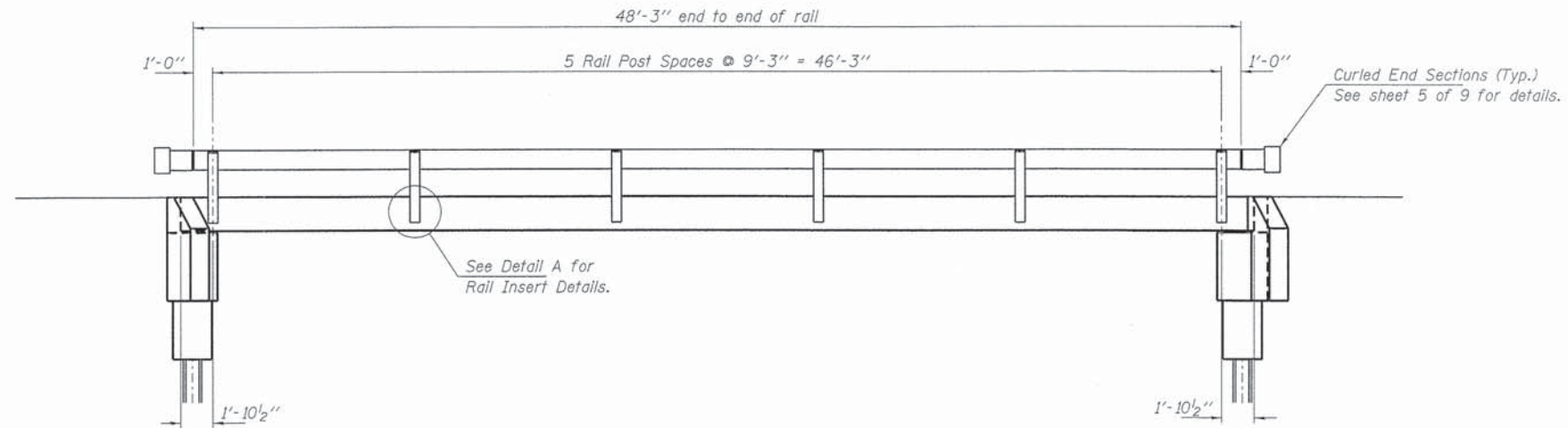
PD-2148-RD 7-1-10

FILE NAME = 120079-sht-brIDGE.dgn	USER NAME =	DESIGNED - L.A.P.	REVISED -
HAMPTON, LENZINI AND RENWICK, INC.		CHECKED - S.W.M.	REVISED -
3001 STEVENSON DRIVE, SUITE 201		DRAWN - D.A.B.	REVISED -
SPRINGFIELD, ILLINOIS 62703	PLOT SCALE =	CHECKED - S.W.M.	REVISED -
ILLINOIS PROFESSIONAL DESIGN FIRM	PLOT DATE = 5/17/2013		
LSI P/E BE CORP. 184-000899			

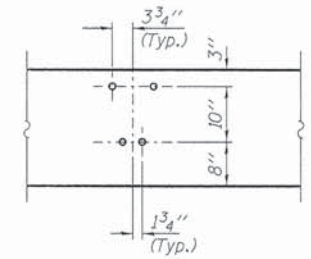
**STATE OF ILLINOIS**  
**WHITE COUNTY HIGHWAY DEPARTMENT**

**21" x 48" PPC DECK BEAM DETAILS**  
**STRUCTURE NO. 097-3278**  
SHEET NO. 3 OF 9 SHEETS

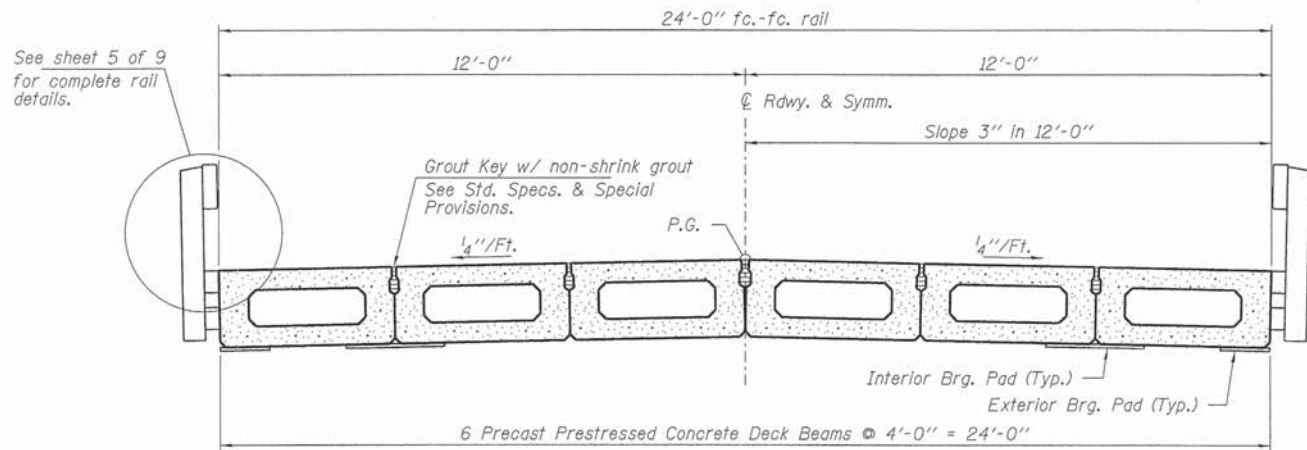
T.R.	SECTION	COUNTY	TOTAL SHEETS	SHEET NO.
120	09-08142-00-BR	WHITE	13	7
INDIAN CREEK ROAD DISTRICT		CONTRACT NO. 99501		
ILLINOIS FED. AID PROJECT				



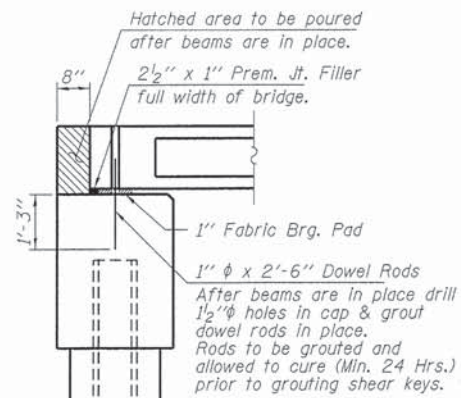
**ELEVATION**  
Showing Rail Post Spaces  
See sheet 5 of 9 for Railing Details.



**DETAIL A**



**CROSS SECTION**  
See sheets 2 & 3 of 9 for Superstructure.



**SECTION AT ABUTMENTS**  
© Rt. L's

FILE NAME = 120079-ah4-bridge.dgn  
 USER NAME =  
 DESIGNED - L.A.P.  
 CHECKED - S.W.M.  
 DRAWN - D.A.B.  
 CHECKED - S.W.M.  
 HAMPTON, LENZINI AND RENWICK, INC.  
 308 W. WASHINGTON DRIVE, SUITE 201  
 SPRINGFIELD, ILLINOIS 62761  
 ILLINOIS PROFESSIONAL DESIGN FIRM  
 L.S. / P.E. / S.E. CORP. 184.000989

DESIGNED - L.A.P.  
 CHECKED - S.W.M.  
 DRAWN - D.A.B.  
 CHECKED - S.W.M.  
 PLOT SCALE =  
 PLOT DATE = 5/17/2013

STATE OF ILLINOIS  
 WHITE COUNTY HIGHWAY DEPARTMENT

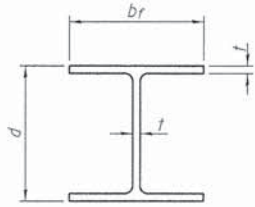
SUPERSTRUCTURE DETAILS  
 STRUCTURE NO. 097-3278  
 SHEET NO. 4 OF 9 SHEETS

T.R.	SECTION	COUNTY	TOTAL SHEETS	SHEET NO.
120	09-08142-00-BR	WHITE	13	8
INDIAN CREEK ROAD DISTRICT			CONTRACT NO. 99501	
ILLINOIS FED. AID PROJECT				



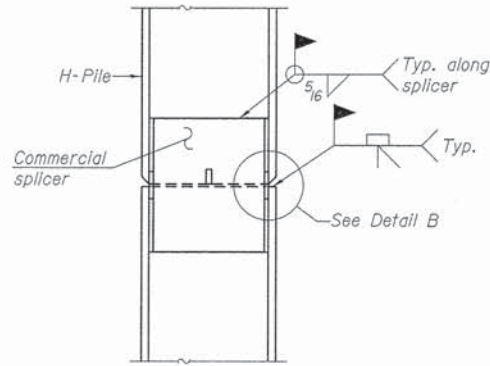




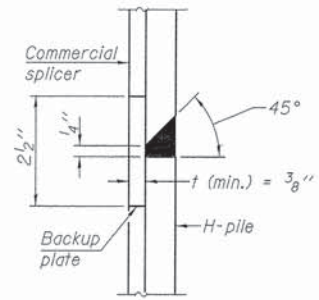


**STEEL PILE TABLE**

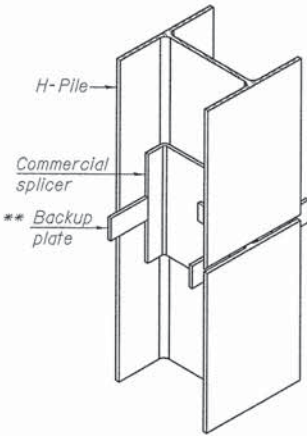
Designation	Depth d	Flange width br	Web and Flange thickness t	Encasement diameter A
HP 14x117	14 1/4"	14 7/8"	13/16"	30"
x102	14"	14 3/4"	1/16"	30"
x89	13 7/8"	14 3/4"	5/8"	30"
x73	13 5/8"	14 5/8"	1/2"	30"
HP 12x84	12 1/4"	12 1/4"	11/16"	24"
x74	12 1/8"	12 1/4"	5/8"	24"
x63	12"	12 1/8"	1/2"	24"
x53	11 3/4"	12"	7/16"	24"
HP 10x57	10"	10 1/4"	9/16"	24"
x42	9 3/4"	10 1/8"	7/16"	24"
HP 8x36	8"	8 1/8"	7/16"	18"



**ELEVATION**

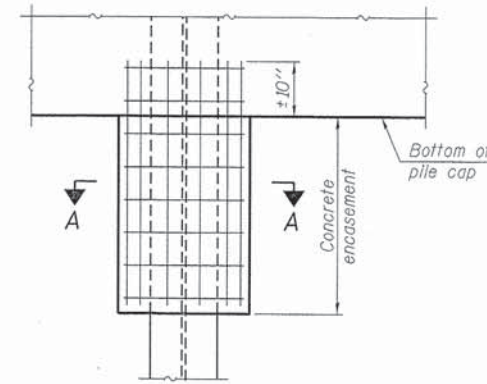


**DETAIL "B"**



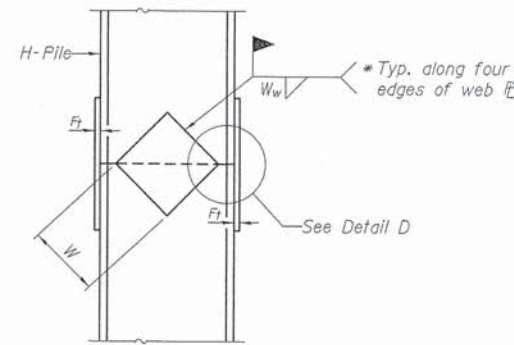
**ISOMETRIC VIEW**

**WELDED COMMERCIAL SPLICE**

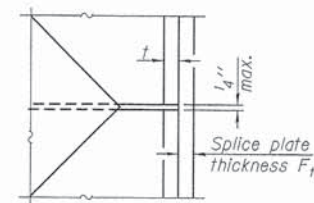


**ELEVATION**

**PILE ENCASEMENT**

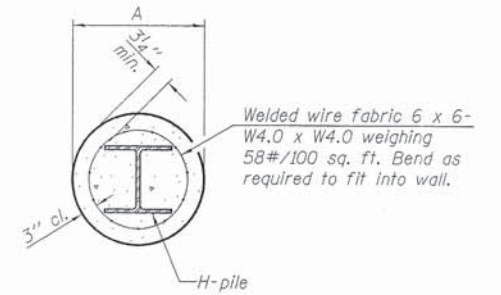


**ELEVATION**

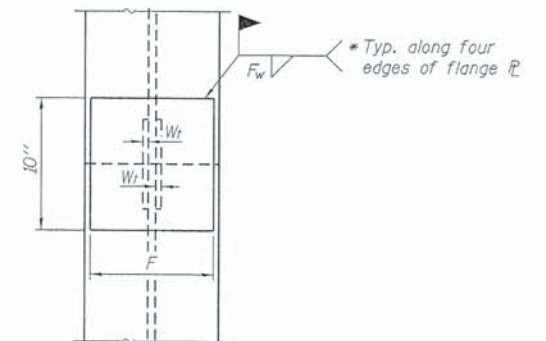


**DETAIL D**

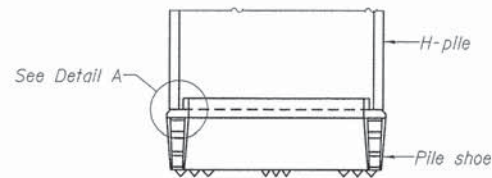
**WELDED PLATE FIELD SPLICE**



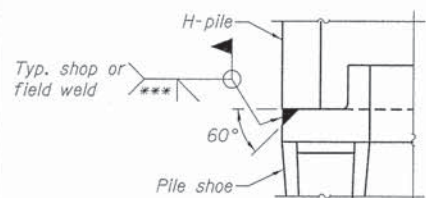
**SECTION A-A**



**END VIEW**

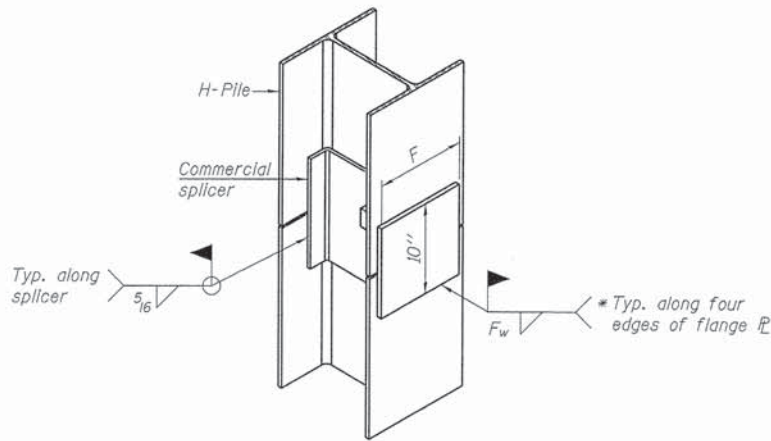


**ELEVATION**



**DETAIL A**

**H-PILE SHOE ATTACHMENT**



**ISOMETRIC VIEW**

**WELDED COMMERCIAL SPLICE ALTERNATE**

- \* Interrupt welds 1/4" from end of web and/or each flange.
- \*\* Remove portions of backup plates that extend outside the flanges.
- \*\*\* Weld size per pile shoe manufacturer (5/16" min.).

Note:  
The steel H-piles shall be according to AASHTO M270 Grade 50.

Designation	F	Ft	Fw	W	Wt	Ww
HP 14x117	12 1/2"	1"	7/8"	7 3/4"	5 1/2"	1/2"
x102	12 1/2"	7/8"	3/4"	7 3/4"	5 1/2"	1/2"
x89	12 1/2"	3/4"	11/16"	7 3/4"	5 1/2"	1/2"
x73	12 1/2"	5/8"	9/16"	7 3/4"	5 1/2"	1/2"
HP 12x84	10"	7/8"	11/16"	6 1/2"	5 1/2"	1/2"
x74	10"	7/8"	11/16"	6 1/2"	5 1/2"	1/2"
x63	10"	5/8"	1/2"	6 1/2"	5 1/2"	3/8"
x53	10"	5/8"	1/2"	6 1/2"	5 1/2"	3/8"
HP 10x57	8"	3/4"	9/16"	5 1/4"	5 1/2"	3/8"
x42	8"	5/8"	9/16"	5 1/4"	5 1/2"	3/8"
HP 8x36	7"	5/8"	7/16"	4 1/4"	5 1/2"	3/8"

F-HP 1-27-12

FILE NAME = 120079-shr-bridge.dgn	USER NAME =	DESIGNED - L.A.P.	REVISED -
HAMPTON, LENZINI AND RENWICK, INC.		CHECKED - S.W.M.	REVISED -
2005 STEVENSON DRIVE, SUITE 201		DRAWN - D.A.B.	REVISED -
SPRINGFIELD, ILLINOIS 62703		CHECKED - S.W.M.	REVISED -
ILLINOIS PROFESSIONAL DESIGN FIRM			
LS / PE / SE COMP. 58-000000			

STATE OF ILLINOIS  
WHITE COUNTY HIGHWAY DEPARTMENT

HP PILE DETAILS  
STRUCTURE NO. 097-3278  
SHEET NO. 7 OF 9 SHEETS

T.R.	SECTION	COUNTY	TOTAL SHEETS	SHEET NO.
120	09-08142-00-BR	WHITE	13	11
INDIAN CREEK ROAD DISTRICT			CONTRACT NO. 99501	
ILLINOIS FED. AID PROJECT				



