

STATE OF ILLINOIS  
DEPARTMENT OF TRANSPORTATION

F.A. RTE.	SECTION	COUNTY	TOTAL SHEETS	SHEET NO.
		ILLINOIS	11	1

\*D7 GUARDRAIL END SECTIONS 2019-1  
\*\*LAWRENCE & RICHLAND

0-97-011-19

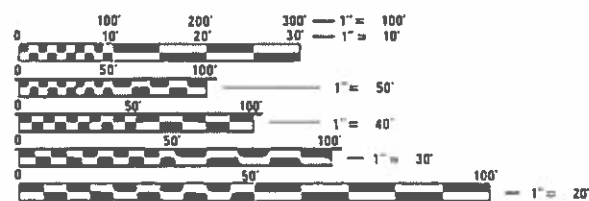
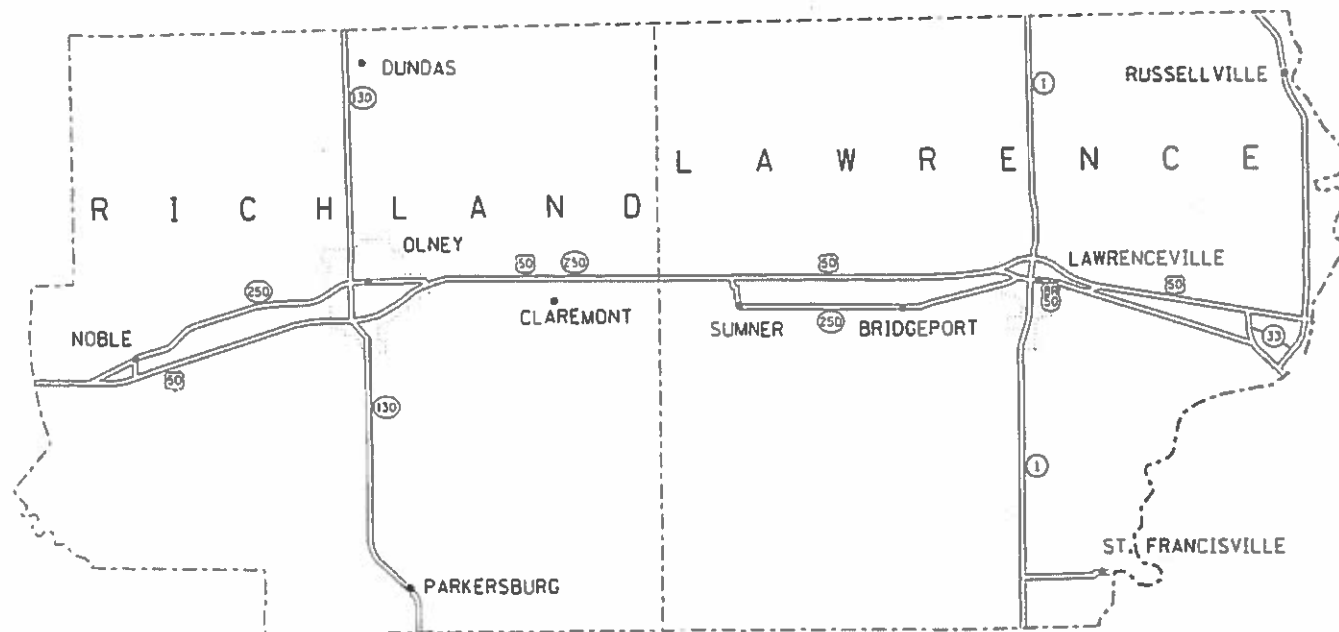
FOR INDEX OF SHEETS, SEE SHEET NO. 2

# PROPOSED HIGHWAY PLANS

VARIOUS ROUTES  
SECTION D7 GUARDRAIL END SECTIONS 2019-1  
PROJECT HSIP-8DCG(107)

LAWRENCE & RICHLAND COUNTIES

C-97-022-19



FULL SIZE PLANS HAVE BEEN PREPARED USING STANDARD ENGINEERING SCALES. REDUCED SIZED PLANS WILL NOT CONFORM TO STANDARD SCALES. IN MAKING MEASUREMENTS ON REDUCED PLANS, THE ABOVE SCALES MAY BE USED.

J.U.L.I.E.  
JOINT UTILITY LOCATION INFORMATION FOR EXCAVATION  
1-800-892-0123  
OR 811

PROJECT ENGINEER BRIAN LEWIS  
PROJECT MANAGER BRIAN LEWIS

CONTRACT NO. 74894

STATE OF ILLINOIS  
DEPARTMENT OF TRANSPORTATION

SUBMITTED May 13 2019  
Jeffery A. South

June 28 2019  
E.A. Etk  
ENGINEER OF DESIGN AND ENVIRONMENT

June 28 2019  
Paul P. [Signature]  
DIRECTOR OF HIGHWAYS PROJECT IMPLEMENTATION

PRINTED BY THE AUTHORITY  
OF THE STATE OF ILLINOIS

GENERAL NOTES

THIS PROJECT CONSISTS OF REMOVAL AND REPLACEMENT OF GUARDRAIL, PLACEMENT OF AGGREGATE AND EXTENSION OF CULVERTS ON VARIOUS ROUTES IN LAWRENCE AND RICHLAND COUNTIES.

THE AGGREGATE QUANTITIES ARE ROUGH ESTIMATES. THE CONTRACTOR SHALL CONSULT THE RESIDENT ENGINEER FOR CLOSER ESTIMATES OF THE QUANTITIES REQUIRED AT EACH LOCATION. THE PURPOSE OF THE AGGREGATE IS TO FLATTEN THE SHOULDER SLOPE AS SHOWN ON STANDARD 630301.

LIGHTED BARRICADES SHALL BE PLACED AT ANY LOCATION AT WHICH GUARDRAIL HAS BEEN REMOVED AND NOT REPLACED ON THE SAME DAY AND/OR AT ANY LOCATION WHERE THE GUARDRAIL INSTALLATION IS NOT COMPLETE.

NO LANE CLOSURES WILL BE ALLOWED TO REMAIN OVERNIGHT.

LENGTHS OF GUARDRAIL TYPE A WERE CALCULATED ASSUMING A TYPE 1 TERMINAL LENGTH OF 50 FEET WITH 37.5 FEET CONTRIBUTING TO LENGTH OF NEED. IF THE CONTRACTOR ELECTS TO PROVIDE A TYPE 1 TERMINAL SHORTER THAN THIS THE CONTRACTOR SHALL PROVIDE AND ERECT AT NO COST TO THE DEPARTMENT TYPE A RAIL SUFFICIENT TO MAKE UP THE DIFFERENCE.

- 1 COVER SHEET
- 2 INDEX OF SHEETS AND GENERAL NOTES
- 3 SUMMARY OF QUANTITIES
- 4 LAWRENCE COUNTY MAP
- 5-7 LAWRENCE COUNTY QUANTITIES
- 8 RICHLAND COUNTY MAP
- 9 RICHLAND COUNTY QUANTITIES
- 10-11 CULVERT EXTENSION DETAILS

THE FOLLOWING STANDARDS ARE A PART OF THESE PLANS AND ARE INCLUDED FOLLOWING THE LAST NUMBERED SHEET OF THE PLANS.

- 630001-12 STEEL PLATE BEAM GUARDRAIL
- 630301-09 SHOULDER WIDENING FOR TYPE 1 GUARDRAIL TERMINALS
- 631011-10 TRAFFIC BARRIER TERMINAL, TYPE 2
- 631031-15 TRAFFIC BARRIER TERMINAL, TYPE 6
- 631032-09 TRAFFIC BARRIER TERMINAL, TYPE 6A
- 631033-07 TRAFFIC BARRIER TERMINAL, TYPE 6B
- 701006-05 OFF-ROAD OPERATIONS, 2L, 2W, 15' TO 24" FROM PAVEMENT EDGE
- 701101-05 OFF-ROAD OPERATIONS, MULTILANE, 15' TO 24" FROM PAVEMENT EDGE
- 701201-05 LANE CLOSURE, 2L, 2W, DAY ONLY, FOR SPEEDS >= 45 MPH
- 701301-04 LANE CLOSURE, 2L, 2W, SHORT TIME OPERATIONS
- 701501-06 URBAN LANE CLOSURE, 2L 2W, UNDIVIDED
- 701901-08 TRAFFIC CONTROL DEVICES
- 725001-01 OBJECT AND TERMINAL MARKERS
- 782006 GUARDRAIL AND BARRIER WALL REFLECTOR MOUNTING DETAILS

MODEL: Default  
 FILE: \\blm1c1.pw.uspb.com\data\illinois.gov\PIWDOT\Documents\DOT\_Offices\District\_7\Projects\74894\CADD\data\CAD\sheets\D74894-shc-gen-note.dgn

USER NAME = steffenmk	DESIGNED -	REVISED -	<b>STATE OF ILLINOIS DEPARTMENT OF TRANSPORTATION</b>	<b>GENERAL NOTES INDEX OF SHEETS</b>			F.A. RTE.	SECTION	COUNTY	TOTAL SHEETS	SHEET NO.
DRAWN -	REVISED -						*		11	2	
PLOT SCALE = 100.0000' / in.	CHECKED -	REVISED -					CONTRACT NO. 74894				
PLOT DATE = 5/13/2019	DATE -	REVISED -		SCALE:	SHEET OF SHEETS	STA. TO STA.	ILLINOIS FED. AID PROJECT				

80% FED  
20% STATE

80% FED  
20% STATE

SUMMARY OF QUANTITIES			TOTAL QUANTITIES	CONSTRUCTION TYPE CODE		
CODE NO	ITEM	UNIT		0021 RICHLAND	0021 LAWRENCE	
50800105	REINFORCEMENT BARS	POUND	142		142	
54001002	BOX CULVERT END SECTIONS, CULVERT NO. 2	EACH	2		2	
54001006	BOX CULVERT END SECTIONS, CULVERT NO. 6	EACH	2		2	
54002020	EXPANSION BOLTS 3/4 INCH	EACH	76		76	
54010503	PRECAST CONCRETE BOX CULVERTS 5' X 3'	FOOT	6		6	
54248510	CONCRETE COLLAR	CU YD	2		2	
550A0120	STORM SEWERS, CLASS A, TYPE 1 24"	FOOT	10		10	
63000001	STEEL PLATE BEAM GUARDRAIL, TYPE A, 6 FOOT POSTS	FOOT	6725		6725	
63000003	STEEL PLATE BEAM GUARDRAIL, TYPE A, 9 FOOT POSTS	FOOT	3813	1750	2063	
63100045	TRAFFIC BARRIER TERMINAL, TYPE 2	EACH	4		4	
63100085	TRAFFIC BARRIER TERMINAL, TYPE 6	EACH	22	10	12	
63100167	TRAFFIC BARRIER TERMINAL, TYPE 1 (SPECIAL) TANGENT	EACH	60	12	48	

SUMMARY OF QUANTITIES			TOTAL QUANTITIES	CONSTRUCTION TYPE CODE		
CODE NO	ITEM	UNIT		0021 RICHLAND	0021 LAWRENCE	
63100169	TRAFFIC BARRIER TERMINAL, TYPE 1 (SPECIAL) FLARED	EACH	2	2		
63200310	GUARDRAIL REMOVAL	FOOT	16337	2901	13436	
67100100	MOBILIZATION	L SUM	1	0.5	0.5	
72501000	TERMINAL MARKER - DIRECT APPLIED	EACH	62	14	48	
78200005	GUARDRAIL REFLECTORS, TYPE A	EACH	186	34	152	
X0322936	REMOVE EXISTING FLARED END SECTION	EACH	1		1	
X4811900	AGGREGATE SHOULDERS (SPECIAL)	TON	219	54	165	
X6310088	TRAFFIC BARRIER TERMINAL TYPE 6A (SPECIAL)	EACH	9		9	
X6311217	TRAFFIC BARRIER TERMINAL, TYPE 6B (SPECIAL)	EACH	4		4	
X6330725	STEEL PLATE BEAM GUARDRAIL (SHORT RADIUS)	FOOT	25		25	
Z0049790	RELOCATING NAME PLATES	EACH	1		1	

MODEL: Default  
 FILE: \\bls01\pub\baronm\ada\illinois\poc\RWIDOT\Documents\DOT\_Offices\bls01\7\Projects\74894\CAD\Drawings\74894-1-100.dgn

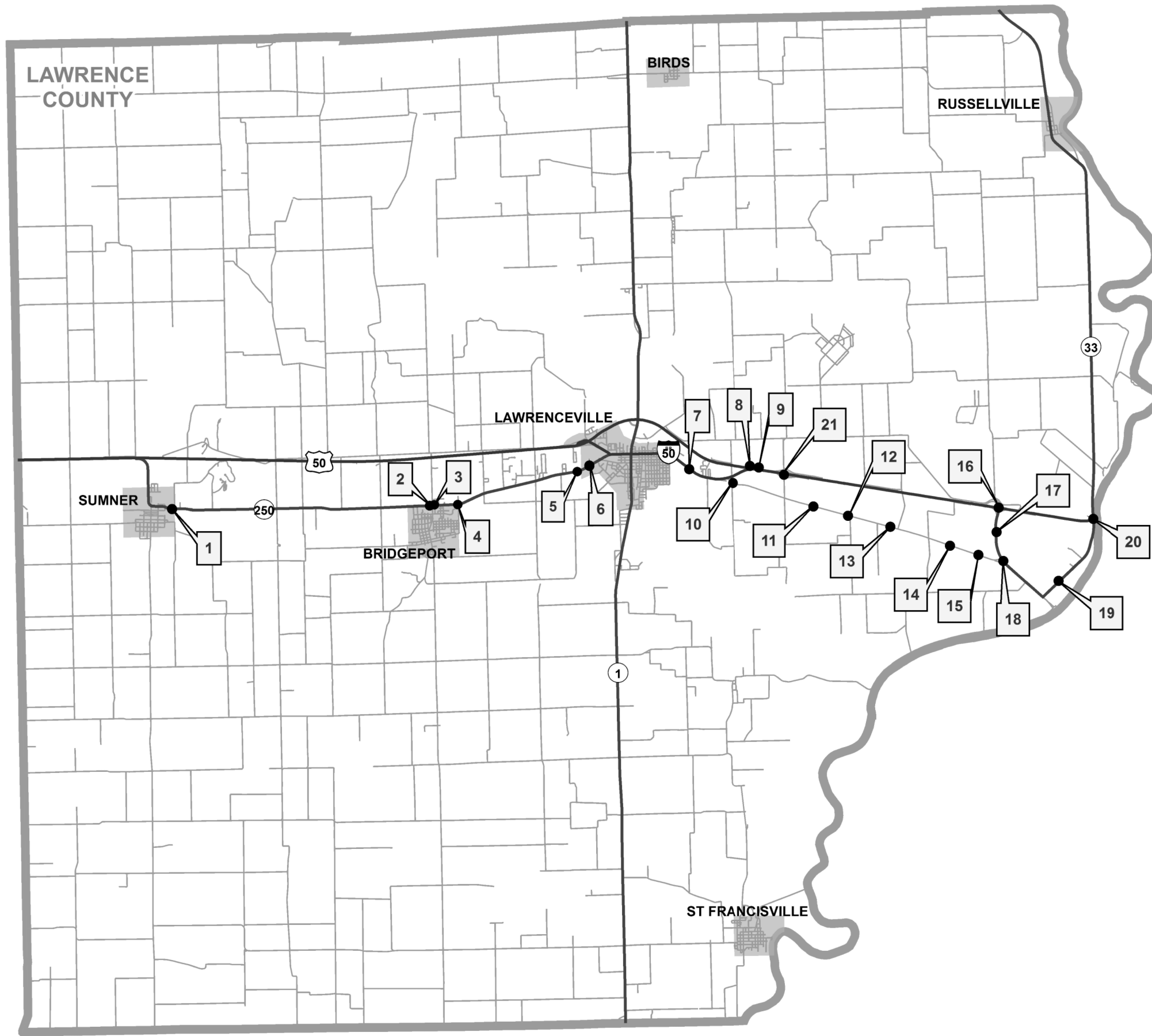
USER NAME = steffenmk	DESIGNED -	REVISED -
	DRAWN -	REVISED -
PLOT SCALE = 100.0000' / in.	CHECKED -	REVISED -
PLOT DATE = 5/13/2019	DATE -	REVISED -

**STATE OF ILLINOIS  
DEPARTMENT OF TRANSPORTATION**

**SUMMARY OF QUANTITIES**

SCALE: SHEET OF SHEETS STA. TO STA.

F.A. RTE.	SECTION	COUNTY	TOTAL SHEETS	SHEET NO.
	*		11	3
			CONTRACT NO. 74894	



MODEL: Default  
 FILE: h:\m\c\p\pub\lancount\dot\Documents\DOT\_Offices\lanc\74894\CADD\data\CADDsheets\DOT74894-sht-clan.dgn

USER NAME = steffemk	DESIGNED -	REVISED -
	DRAWN -	REVISED -
PLOT SCALE = 100,0000' / in.	CHECKED -	REVISED -
PLOT DATE = 5/13/2019	DATE -	REVISED -

**STATE OF ILLINOIS**  
**DEPARTMENT OF TRANSPORTATION**

**LAWRENCE COUNTY GUARDRAIL MAP**

SCALE: SHEET OF SHEETS STA. TO STA.

\* LAWRENCE & RICHLAND  
 \*\* D7 GUARDRAIL END SECTIONS 2019-1

F.A. RTE.	SECTION	COUNTY	TOTAL SHEETS	SHEET NO.
	**	*	11	4
CONTRACT NO. 74894				
		ILLINOIS	FED. AID PROJECT	

MODEL: Default  
 FILE: Model - QuantitySchedule.dgn  
 PROJECT: 74894\CADD\Drawings\DOT - Office\Drawings\74894\CADD\Drawings\DOT - Office\Drawings\74894-QuantitySchedule.dgn

Map Location	GIS Guardrail ID	Route	Terminal Location	Structure No./Intersection	Latitude	Longitude	Guardrail Removal (Foot)	Traffic Barrier Terminal Type 1 (Special) Tangent (Each)	Traffic Barrier Terminal Type 1 (Special) Flared (Each)	Traffic Barrier Terminal Type 2 (Each)	Steel Plate Beam Guardrail, Type A 6 Foot Posts (Foot)	Steel Plate Beam Guardrail, Type A 9 Foot Posts (Foot)	Traffic Barrier Terminal Type 6 (Each)	Traffic Barrier Terminal Type 6A (Special) (Each)	Traffic Barrier Terminal Type 6B (Special) (Each)	Steel Plate Beam Guardrail (Short Radius) (Foot)	Aggregate Shoulders (Special) (Ton)	Terminal Marker - Direct Applied (Each)	Guardrail Reflectors, Type A (Each)
1	0510045	IL 250	SW Quad	051-0052	38.71732650	-87.85359751	100.0	1			75.0			1				1	2
	0510046	IL 250	NW Quad	051-0052	38.71743232	-87.85359740	100.0	1			12.5			1				1	1
	0510047	IL 250	NE Quad	051-0052	38.71758692	-87.85269885	100.0							1		25			2
	0510048	IL 250	SE Quad	051-0052	38.71730865	-87.85249030	100.0	1			12.5			1				1	1
2	0510053	IL 250	SW Quad	Box W of Bridgeport Rd	38.71637883	-87.76032623	37.5												
	0510054	IL 250	NW Quad	Box W of Bridgeport Rd	38.71646726	-87.76030820	37.5										15		
	0510055	IL 250	NE Quad	Box W of Bridgeport Rd	38.71647134	-87.76004393	37.5												
	0510056	IL 250	SE Quad	Box W of Bridgeport Rd	38.71637910	-87.76006386	37.5										15		
3	0510057	IL 250	West End	Box E of Bridgeport Rd	38.71648678	-87.75890977	38.0												
	0510058	IL 250	East End	Box E of Bridgeport Rd	38.71649054	-87.75864627	38.0												
4	0510059	IL 250	SW Quad	IL 250 & Corp. Line Rd	38.71653002	-87.75013114	25.0	1				25.0						1	1
5	0510211	IL 250	N/A	Law. Co. Health Dept.	38.72649940	-87.70224816	13.0												
6	0510061	IL 250	SW Quad	W of L'ville Walmart	38.72649940	-87.70224816	32.0												
	0510062	IL 250	NW Quad	W of L'ville Walmart	38.72658664	-87.70228446	38.0										15		
	0510063	IL 250	NE Quad	W of L'ville Walmart	38.72668324	-87.70205062	38.0												
	0510064	IL 250	SE Quad	W of L'ville Walmart	38.72657617	-87.70206300	32.0										30		
7	0510068	BUS 50	SW Quad	051-0053	38.72603247	-87.66815105	100.0	1			37.5		1					1	1
	0510069	BUS 50	NW Quad	051-0053	38.72612526	-87.66805387	100.0	1					1					1	1
	0510070	BUS 50	SE Quad	051-0053	38.72353700	-87.66414949	100.0	1					1					1	1
	0510071	BUS 50	NE Quad	051-0053	38.72363212	-87.66405084	100.0	1			12.5		1					1	1
8	0510072	BUS 50	NW Quad	051-0031	38.72521164	-87.64413489	138.0	1			87.5							1	2
9	0510144	US 50 WB	SE Quad	Exit to BUS 50	38.72473426	-87.64090887	1065.0	1				1012.5						1	13

Notes: Location 1: Omit 'W' beam section from type 6 terminal on NE quadrant. Relocate name plate.

Location 2: Extend box culvert, remove guardrail, do not replace.

Locations 3 & 5: Remove guardrail, do not replace.

Location 6: Extend box culvert, remove guardrail, do not replace.

USER NAME = steffemk	DESIGNED -	REVISED -
	DRAWN -	REVISED -
PLOT SCALE = 100.0000' / in.	CHECKED -	REVISED -
PLOT DATE = 5/13/2019	DATE -	REVISED -

**STATE OF ILLINOIS  
DEPARTMENT OF TRANSPORTATION**

**LAWRENCE COUNTY  
QUANTITY SCHEDULE**

SCALE: SHEET 1 OF 3 SHEETS STA. TO STA.

F.A. RTE.	SECTION	COUNTY	TOTAL SHEETS	SHEET NO.
	*		11	5
			CONTRACT NO. 74894	









MODEL: Default  
 FILE: \\bls01c-pub\blsroom\dat\illinois\pwr\DOT\Documents\DOT\_Offices\Dir\ctc\_7\Projects\74894\CADD\data\CAD\sheet\074894-shc-schedule.dgn

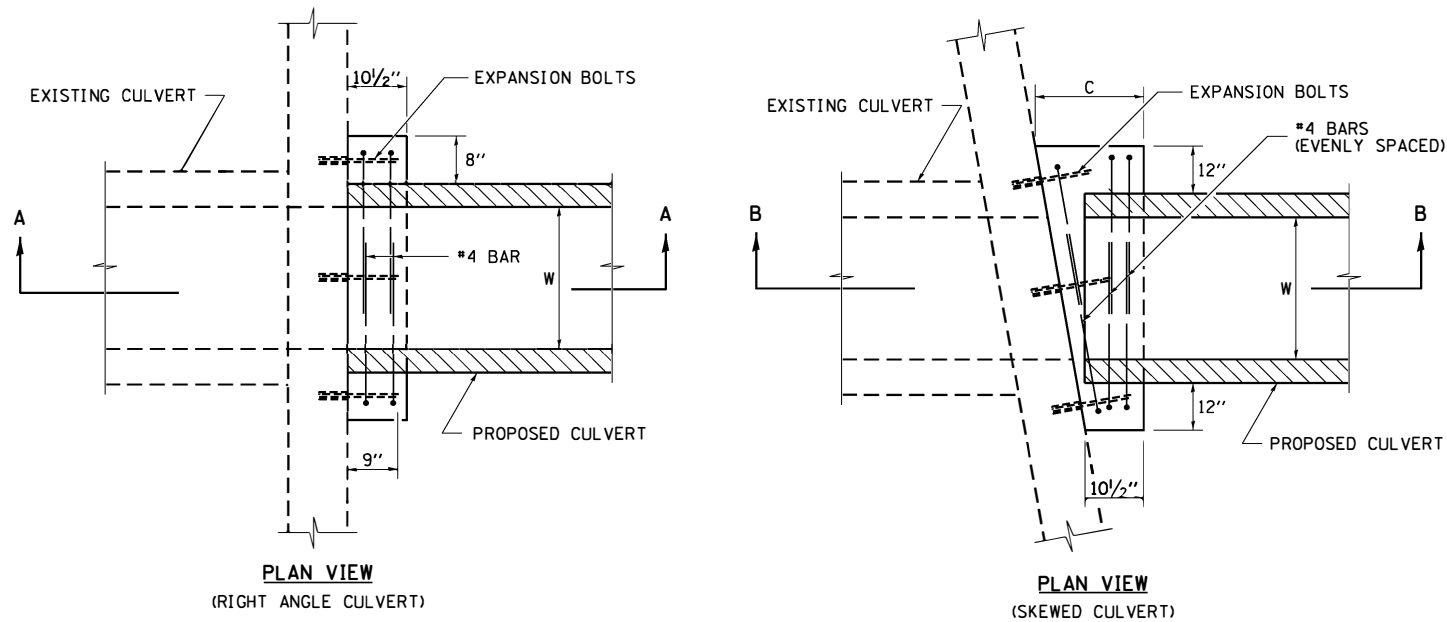
Map Location	GIS Guardrail ID	Route	Terminal Location	Structure No/Intersection	Latitude	Longitude	Guardrail Removal (Foot)	Traffic Barrier Terminal Type 1 (Special) Tangent (Each)	Traffic Barrier Terminal Type 1 (Special) Flared (Each)	Steel Plate Beam Guardrail, Type A 6 Foot Posts (Foot)	Steel Plate Beam Guardrail, Type A 9 Foot Posts (Foot)	Traffic Barrier Terminal Type 2 (Each)	Traffic Barrier Terminal Type 6 (Each)	Traffic Barrier Terminal Type 6A (Special) (Each)	Traffic Barrier Terminal Type 6B (Special) (Each)	Aggregate Shoulders (Special) (Ton)	Terminal Marker - Direct Applied	Guardrail Reflectors, Type A
1	0800057	IL 130	NE Quad	080-0020	38.59251622	-88.06570287	240	1		150.0			1				1	3
	0800058	IL 130	SE Quad	080-0020	38.59253639	-88.06597849	154	1		62.5			1				1	2
	0800059	IL 130	NW Quad	080-0020	38.59332444	-88.06701932	154	1		62.5			1				1	2
	0800060	IL 130	SW Quad	080-0020	38.59334348	-88.06729562	240	1		150.0			1				1	3
2	0800085	IL 130	SE Quad	080-0009	38.76150100	-88.09449000	250	1		150.0			1			3	1	3
	0800086	IL 130	SW Quad	080-0009	38.76163698	-88.09462804	163	1		62.5			1			3	1	2
	0800087	IL 130	NE Quad	080-0009	38.76292392	-88.09445477	163	1		62.5			1			4	1	2
	0800088	IL 130	NW Quad	080-0009	38.76261972	-88.09461099	88	1		0.0			1			8	1	1
3	0800089	IL 130	SE Quad	Vernor Lake	38.76649438	-88.09444903	525		1	212.5						4	1	3
	0800090	IL 130	SW Quad	Vernor Lake	38.76664341	-88.09461008			1	225.0						4	1	3
	0800091	IL 130	NE Quad	Vernor Lake	38.76797879	-88.09443823		1		212.5						4	1	3
	0800092	IL 130	NW Quad	Vernor Lake	38.76815545	-88.09456739	550	1		225.0						4	1	3
4	0800094	IL 130	SW Quad	080-0021	38.80309938	-88.09449086	188	1		87.5			1			8	1	2
	0800096	IL 130	NE Quad	080-0021	38.80460984	-88.09433721	188	1		87.5			1			12	1	2
					Richland	TOTALS:	2901	12	2	0	1750	0	10	0	0	54	14	34

Notes: Location 1: Erect face of new rail at edge of existing HMA shoulder where possible.

Location 2: Do not block field entrance in northwest quadrant. Use type 1 terminal shorter than 50' or overlap with type 6 terminal.

Location 3: Drive new posts before removing existing posts.

# DETAIL OF CONCRETE COLLAR FOR BOX CULVERT EXTENSIONS

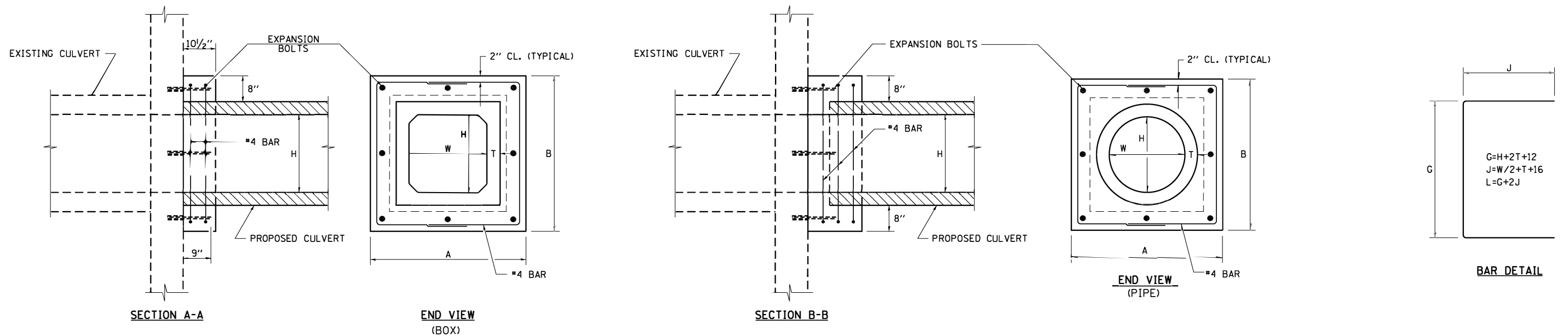


NOTE: PIPE OR BOX MAY BE BEVELED TO MATCH EXISTING BOX SKEW ANGLE

CONCRETE COLLAR SCHEDULE

LOC. NUMBER	DIMENSIONS						REINFORCEMENT BARS					EXTENSION		CONC. COLLAR C. Y.	EXP. BOLTS EACH
	A	B	C	W	H	T	G	J	L	NUMBER BARS	POUND	LENGTH FT.	END SECTIONS EACH		
	IN	IN	IN	IN	IN	IN	IN	IN	IN	EA					
2	74	66	10.5	48	36	5	62	45	152	8	68	0	2	1.0	36
6	88	67	10.5	60	36	6	63	52	167	8	74	6	2	1.0	40
TOTALS											142	6	4	2.0	76

NOTES: EXPANSION BOLTS SHALL CONSIST OF SELF-DRILLING EXPANSION SHIELDS AND HOOKED BOLTS. HOOKED BOLTS SHALL EXTEND A MINIMUM OF 9" INTO THE NEW CONCRETE. QUANTITIES INCLUDE BOTH SIDES OF ROAD AT EACH LOCATION. LOCATIONS #2 REQUIRES 4X3 BOX, #6 REQUIRES 5X3 BOX



REV. - MS

MODEL: Default  
FILE: M:\MS: P:\uplanroom.dat\illinois.gov\PIV\DOT\Documents\DOT\_Offices\District\_7\Projects\74894\CADD\data\CAD\sheet\74894-shc-details.dgn

USER NAME = steffemk	DESIGNED -	REVISED -
PLOT SCALE = 100.0000' / in.	DRAWN -	REVISED -
PLOT DATE = 5/13/2019	CHECKED -	REVISED -
	DATE -	REVISED -

**STATE OF ILLINOIS  
DEPARTMENT OF TRANSPORTATION**

**CULVERT EXTENSION DETAILS  
LAWRENCE COUNTY**

SCALE: SHEET OF SHEETS STA. TO STA.

F.A. RTE.	SECTION	COUNTY	TOTAL SHEETS	SHEET NO.
	*		11	10
			CONTRACT NO. 74894	

\* D7 GUARDRAIL END SECTIONS 2019-1

LAWRENCE/RICHLAND

