

STATE OF ILLINOIS
DEPARTMENT OF TRANSPORTATION

FAP 646	SECTION Y;126PP	COUNTY PEORIA	TOTAL SHEETS 9	SHEET NO. 1
ILLINOIS CONTRACT NO. 68E96				

INDEX OF SHEETS:

- 1 COVER SHEET
- 2 COMMITMENTS AND GENERAL NOTES
- 3 SUMMARY OF QUANTITIES
- 4 PROPOSED TYPICAL SECTION
- 5 LINE DIAGRAM
- 6-7 SCHEDULE OF QUANTITIES
- 8-9 DISTRICT STANDARDS

HIGHWAY STANDARDS:

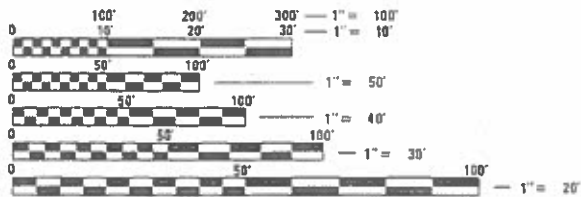
- 701101-05
- 701426-09
- 701602-10
- 701901-08

DISTRICT STANDARDS:

- 780001-D4

DESIGN DESIGNATION:

- CLASS: OTHER ARTERIAL
- ADT: 21,900 (2019)
- HCV: 5.59%
- SU: 3.54%
- MU: 2.05%



FULL SIZE PLANS HAVE BEEN PREPARED USING STANDARD ENGINEERING SCALES. REDUCED SIZED PLANS WILL NOT CONFORM TO STANDARD SCALES. IN MAKING MEASUREMENTS ON REDUCED PLANS, THE ABOVE SCALES MAY BE USED.

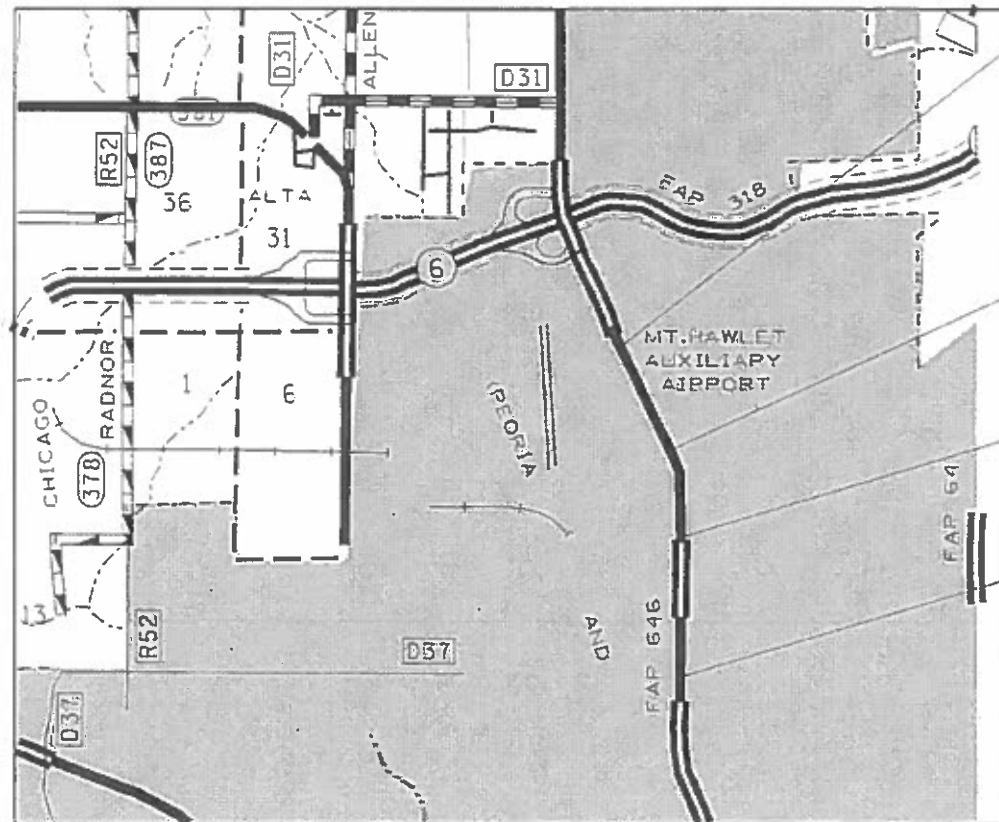
J.U.L.I.E.
JOINT UTILITY LOCATION INFORMATION FOR EXCAVATORS
1-800-892-0123
OR 811

PROJECT ENGINEER RICH DOTSON 309-671-3455
PROJECT MANAGER ANDREW MITCHELL 309-671-3465
CATALOG NO. 035743-00D
CONTRACT NO. 68E96

PROPOSED
HIGHWAY PLANS

FAP 646 ROUTE (IL 40)
SECTION (Y;126)PP
PROJECT CONTRACT MAINTENANCE
PEORIA COUNTY

C-94-050-19



PROJECT ENDS
STA 154+75

STATION EQUATION
STA 131+00(BK) =
STA 131+80.50(AH)

STATION EQUATION
STA 36+80(BK) =
STA 105+19.23 (BK)

PROJECT BEGINS
STA 76+00

GROSS LENGTH = 8746 FT. = 1.7 MILE

D-94-031-19



LOCATION OF SECTION INDICATED THUS: -

PROJECT DESCRIPTION:
PATCHING & LONGITUDINAL JOINT REPAIR
ON IL 40 (KNOXVILLE AVE) FROM
TIMBER LANE TO BETHANY WAY IN PEORIA.

STATE OF ILLINOIS
DEPARTMENT OF TRANSPORTATION
SUBMITTED 7/3 2019
Karl A. Hutto REGIONAL ENGINEER
June 28 2019
[Signature] ENGINEER OF DESIGN AND ENVIRONMENT
June 28 2019
[Signature] DIRECTOR OF HIGHWAYS PROJECT IMPLEMENTATION

PRINTED BY THE AUTHORITY
OF THE STATE OF ILLINOIS

COMMITMENTS

Commitments are not to be altered without the written approval of all parties to which the commitment was made.

NO COMMITMENTS HAVE BEEN MADE FOR THIS PROJECT

ENVIRONMENTAL REVIEWS

Prior to the use of any proposed borrow areas, use areas (temporary access roads, detours, run-arounds, etc.) and/or waste areas, the Contractor shall file the required environmental resource request surveys according to Section 107.22 of the Standard Specifications. These surveys are required in order for the Department to conduct cultural and biological resource surveys for the proposed site.

The required environmental resource documentation shall include the following:

- * BDE Form 2289 (Cultural and Natural Resources Review of Borrow Areas)
- * BDE Form 2290 (Waste/Use Area Review)
- * A location map showing the size limits and location of the use area
- * Color photographs depicting the use area
- * Borrow Area Entry Agreement form – D4 PI0101

Prior to any waste materials being removed from the construction site the required environmental resource surveys shall be obtained and filed by the Contractor. Excess waste products removed from the construction site shall be disposed of as required in Section 202.03 of the Standard Specifications.

Any protruding metal bars shall be removed prior to the disposal of broken concrete at approved disposal sites.

Please note that a minimum of four weeks shall be allowed for the District to obtain the required environmental clearances and six weeks for the required borrow site environmental clearances.

HOT-MIX ASPHALT MIXTURE REQUIREMENTS

Mixture Use(s):	Patching and Longitudinal Joint Repair
AC/PC:	PG 64-22
Design Air Voids:	4% N = 50
Mixture Composition: (Gradation Mixture):	IL 9.5
Friction Aggregate:	Mix C
Quality Management:	QC/QA

Notes:

- 1) Individual lift thickness of each mix type will be no less than 3 times nominal maximum aggregate size and no more than 6 times nominal maximum.
- 2) For design purposes, mixture weight for all mixes is determined to be 112.0 lb/s.y./in., unless otherwise noted.
- 3) Sublot sizes for PFP and QCP mixes will be 1,000 tons, unless otherwise agreed to by the Engineer and the paving Contractor.

MODEL: \$MODELNAME\$
FILE NAME: \$FILES\$

USER NAME = \$USERS\$	DESIGNED -	REVISED -
	DRAWN -	REVISED -
PLOT SCALE = \$SCALE\$	CHECKED -	REVISED -
PLOT DATE = \$DATES\$	DATE -	REVISED -

**STATE OF ILLINOIS
DEPARTMENT OF TRANSPORTATION**

COMMITMENTS AND GENERAL NOTES			
SCALE:	SHEET	OF	SHEETS
	STA.	TO	STA.

F.A.P. RTE.	SECTION	COUNTY	TOTAL SHEETS	SHEET NO.
646	(Y:126)PP	PEORIA	9	2
CONTRACT NO. 68E96				
ILLINOIS FED. AID PROJECT				

CODE NO.	ITEM	UNIT	TOTAL QUANTITY	CONST. CODE
				URBAN
				PEORIA
				100% STATE
				0006
44201827	CLASS D PATCHES, TYPE II, 15 INCH	SQ YD	83	83
44201831	CLASS D PATCHES, TYPE III, 15 INCH	SQ YD	19	19
67100100	MOBILIZATION	L SUM	1	1
70102632	TRAFFIC CONTROL AND PROTECTION, STANDARD 701602	L SUM	1	1
70102635	TRAFFIC CONTROL AND PROTECTION, STANDARD 701701	L SUM	1	1
78001110	PAINT PAVEMENT MARKING - LINE 4"	FOOT	26745	26745
78001130	PAINT PAVEMENT MARKING - LINE 6"	FOOT	6511	6511
78001140	PAINT PAVEMENT MARKING - LINE 8"	FOOT	5202	5202
78300200	RAISED REFLECTIVE PAVEMENT MARKER REMOVAL	EACH	25	25
X0556100	PARTIAL DEPTH PATCHING (SPECIAL)	SQ YD	1496	1496
X4421000	PARTIAL DEPTH PATCHING	TON	189	189
X7015005	CHANGEABLE MESSAGE SIGN	CAL DA	10	10
Z0033600	LONGITUDINAL JOINT REPAIR	FOOT	10000	10000

MODEL: #MODEL NAME*
FILE NAME: #FILE#

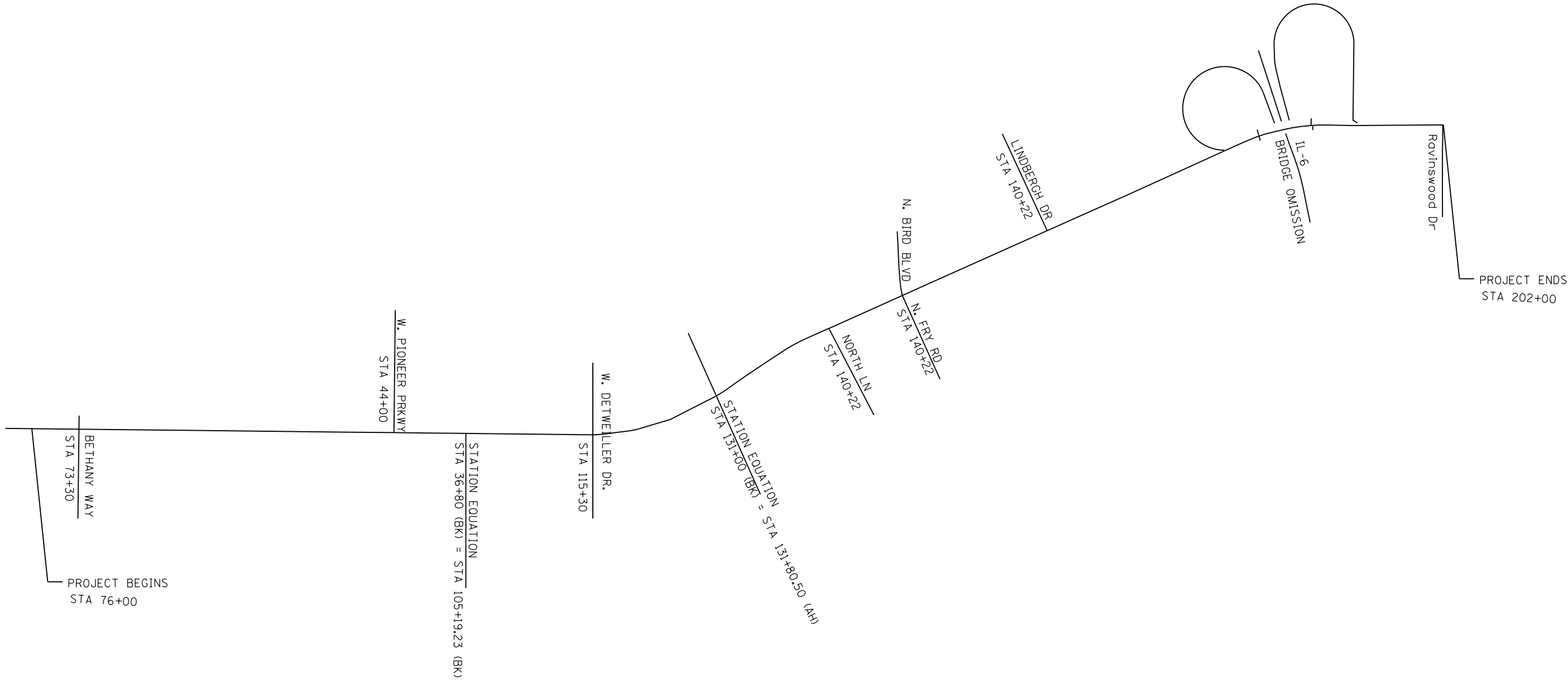
USER NAME = #USER*	DESIGNED -	REVISED -
	DRAWN -	REVISED -
PLOT SCALE = #SCALE*	CHECKED -	REVISED -
PLOT DATE = #DATE*	DATE -	REVISED -

**STATE OF ILLINOIS
DEPARTMENT OF TRANSPORTATION**

SUMMARY OF QUANTITIES

F.A.P. RTE.	SECTION	COUNTY	TOTAL SHEETS	SHEET NO.
646	(Y126)PP	PEORIA	9	3
				CONTRACT NO. 68E96

ILLINOIS FED. AID PROJECT



MODEL: 140DELMAMES
FILE NAME: 371E13

USER NAME = \$USERS	DESIGNED -	REVISED -
	DRAWN -	REVISED -
PLOT SCALE = \$SCALE\$	CHECKED -	REVISED -
PLOT DATE = \$DATE\$	DATE -	REVISED -

**STATE OF ILLINOIS
DEPARTMENT OF TRANSPORTATION**

LINE DIAGRAM

SCALE: SHEET OF SHEETS STA. TO STA.

F.A.P. RTE.	SECTION	COUNTY	TOTAL SHEETS	SHEET NO.
646	(Y:126)PP	PEORIA	9	5
			CONTRACT NO. 68E96	
		ILLINOIS	FED. AID PROJECT	

PAINT PAVEMENT MARKING							
LOCATION	LENGTH	4"YELLOW SOLID	4"YELLOW SKIP DASH	4"YELLOW DOUBLE	4" WHITE SOLID	6" WHITE SKIPDASH	8"SOLID WHITE
		FT	FT	FT	FT	FT	FT
BEGIN STA 76+00 TO BETHANY WAY							
NB STA 76+00 TO STA 73+30	270	430	108	314		68	287
SB STA 76+00 TO STA 73+30	270	430	108	314		68	0
BETHANY WAY TO W.PIONEER PKWY							
NB STA 73+30 TO STA 45+00	2830	1126	146	1113	400	708	588
SB STA 73+30 TO STA 45+00	2830	1121	574	1137	400	708	427
W. PIONEER PRKWY TO W. DETWEILLER DR							
STATION EQUATION STA 36+80(BK) = STA 105+19.23 (AH)							
NB STA 45+00 TO STA 115+30	1831	1022	208	518		458	208
SB STA 45+00 TO STA 115+30	1831	1018	208	711		458	130
W. DETWEILLER DR TO NORTH LN							
STATION EQUATION STA 131+00(BK) TO STA 131+80.50 (AH)							
NB STA 115+30 TO STA 140+20	2409.5	1825	456	205		602	635
SB STA 115+30 TO STA 140+20	2409.5	1820	455	230		602	618
NORTH LN TO N. FRY RD/ BIRD BLVD.							
NB STA 140+20 TO STA 147+45	725	225	56	183		181	398
SB STA 140+20 TO STA 147+45	725	216	54	202		181	310
N. FRY RD./ BIRD BLVD. TO LINDBERGH DR							
NB STA 147+45 TO STA 162+00	1455	1132	187	196		364	359
SB STA 147+45 TO STA 162+00	1455	1137	189	0		364	357
LINDBERGH DR TO IL-6							
NB STA 162+00 TO STA 183+14	2114	2109				529	
SB STA 162+00 TO STA 183+11	2114	2102				529	215
IL-6 TO RAVINSWOOD DR							
NB STA 188+13 TO STA 202+00	1387	1176				347	460
SB STA 188+10 TO STA 202+00	1387	1185				347	210
		18074	2748	5123	800	6511	5202
TOTAL				26745		6511	5202

TRAFFIC CONTROL AND PROTECTION, STANDARD 701701	
LOCATION	LSUM
JOB SITE	1
TOTAL	1

CHANGEABLE MESSAGE SIGN	
LOCATION	CAL DAY
JOB SITE	10
TOTAL	10

TRAFFIC CONTROL AND PROTECTION, STANDARD 701602	
LOCATION	LSUM
JOB SITE	1
TOTAL	1

MOBILIZATION	
LOCATION	LSUM
JOB SITE	1
TOTAL	1

MODEL: 140DELEMAMES
FILE NAME: 31113

USER NAME = \$USERS	DESIGNED -	REVISED -
	DRAWN -	REVISED -
PLOT SCALE = \$SCALES	CHECKED -	REVISED -
PLOT DATE = \$DATES	DATE -	REVISED -

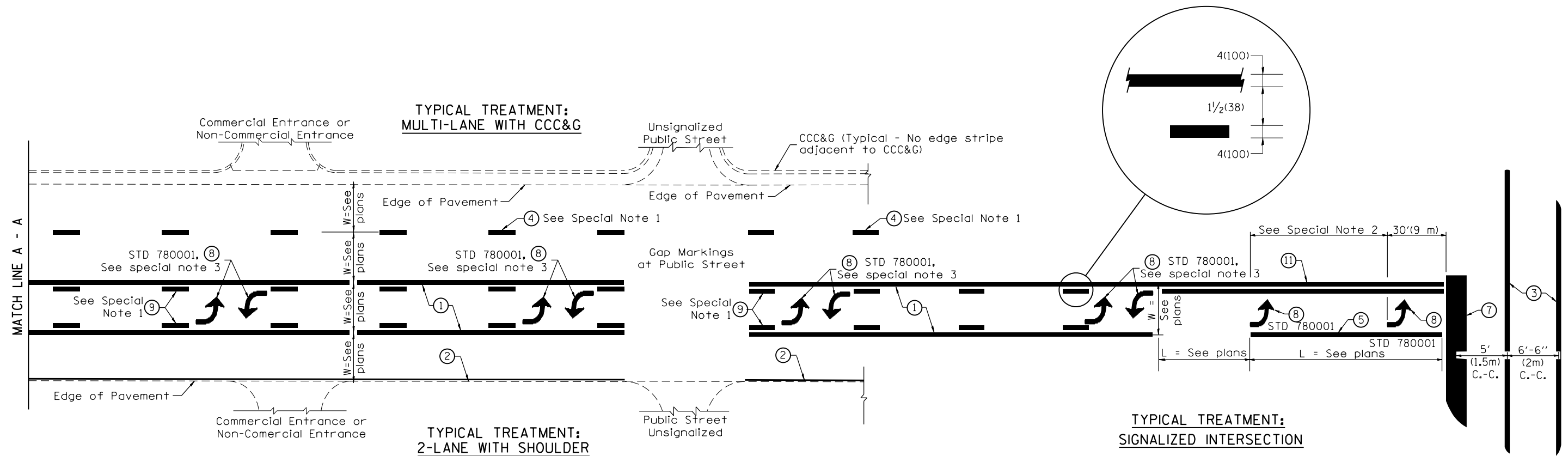
**STATE OF ILLINOIS
DEPARTMENT OF TRANSPORTATION**

SCHEDULE OF QUANTITIES

SCALE: SHEET OF SHEETS STA. TO STA.

F.A.P. RTE.	SECTION	COUNTY	TOTAL SHEETS	SHEET NO.
646	(Y:126)PP	PEORIA	9	7
			CONTRACT NO. 68E96	
ILLINOIS FED. AID PROJECT				

DESIGNER NOTES:
1. Include State Standard 780001 (Typical Pavement Markings)



FLUSH PAVED MEDIAN: TWO-WAY LEFT TURN LANE WITH ONE-WAY LEFT TURN LANE AT SIGNALIZED INTERSECTION

TYPICAL PAVEMENT MARKING LEGEND

(Note: This is a District Standard Legend. Some elements may not apply to specific project.)

- ① 4(100) Solid (Yellow)
- ② 4(100) Solid (White)
- ③ 2-6(150) Crosswalk @ 6'-6" (2m)min C.-C. (White)
2-8(200) Crosswalk @ 6'-6" (2m)min C.-C. (White) (When traffic signals are present.)
- ④ 6(150) Skip-Dash (White) (See Special Note 1)
- ⑤ 8(200) Solid (White)
- ⑥ 12(300) Diagonal (White) (Item ⑥ is shown on Std. 780001)
- ⑦ 24(600) Stop Bar (White)
- ⑧ Letters & Arrows (See Std. 780001 and Special Notes 2 & 3)
- ⑨ 4(100) Skip-Dash (Yellow) (See Special Note 1)
- ⑩ 12(300) Diagonal (Yellow) (See Table A) ⑩
- ⑪ 4(100) Double Solid (Yellow) ⑪

SPECIAL NOTES

- Skip-Dash markings will be centered between both ends of city blocks and shall be placed in alignment transversely across the pavement.
- The following shall apply to arrows located in one-way left turn lanes:
 - A. A minimum of two (2) arrows is required.
 - B. The maximum spacing between arrows is 80' (24 m).
 - C. Arrows shall be evenly spaced if three (3) or more are required.
- The following shall apply to arrow pairs located in two-way left turn lanes:
 - A. A minimum of two (2) arrow pairs is required.
 - B. The maximum spacing between arrow pairs is 200' (61 m).
 - C. Arrow pairs shall be evenly spaced if three (3) or more are required.
 - D. The spacing between Bi Directional Left Turn Arrows is 33' (10 m).

GENERAL NOTES

- Refer to State Standard 780001 for additional Pavement Markings including letters & arrows.
- See Plans for Pavement Markings adjacent to curbed islands and medians, and through lane reductions.
- Refer to Article 780.13 for letter, number and symbol areas (sq. ft.)
- Areas are grooved 1" beyond each edge for the following symbols:
Through Arrow= 14.8 sq. ft.
Large Left or Right Arrow= 21.9 sq. ft.
2 Arrow Combination Left (or Right) and Through= 34.9 sq. ft.
Wrong Way Arrow= 29.5 sq. ft.
Railroad Crossing Symbol= 69.8 sq. ft.
(For further information, refer to BDE Special Provision: Grooving for Recessed Pavement Markings)

01-01-97	RENUM. F-8.03, NEW REVISION BOX	T.P.	10-16-06	REVISED TO 2007 SPEC.	
02-07-97	ADD BI DIRECTIONAL DIMENSION	J.A.	2/29/16	ADDED GROOVING AREAS	R.D.
10-97	CORRECT BI DIRECTIONAL DIMENSION	J.A.			
08-02	ADD CROSSWALK DMNS. WITH T.S.	M.A.			

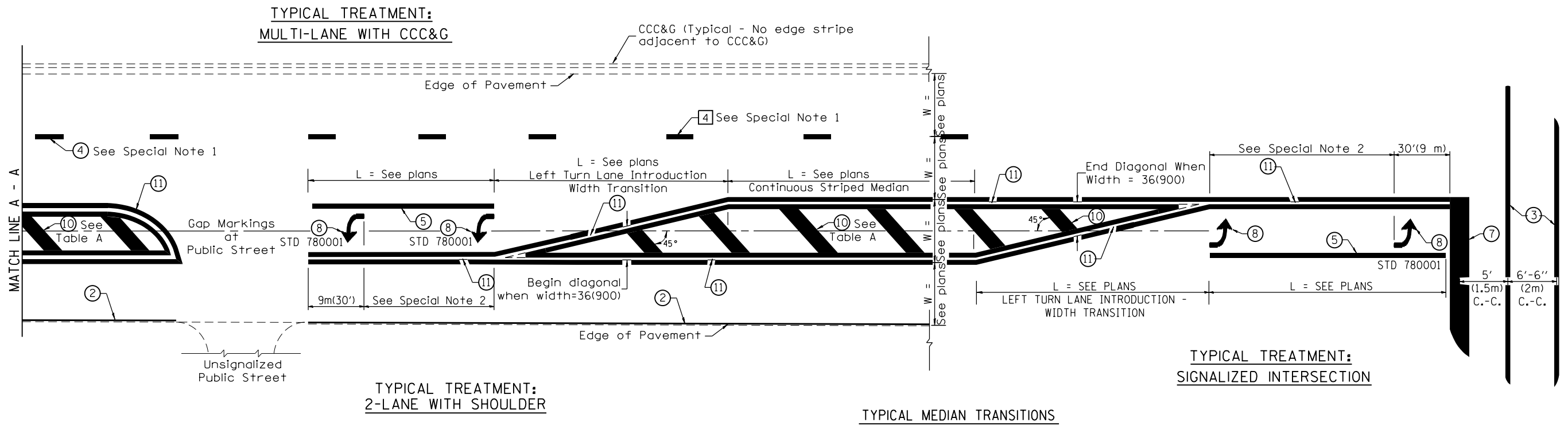
**STATE OF ILLINOIS
DEPARTMENT OF TRANSPORTATION**

NOT TO SCALE

TYPICAL PAVEMENT MARKINGS

SHT. 1 OF 2
CADD STD. 780001-D4

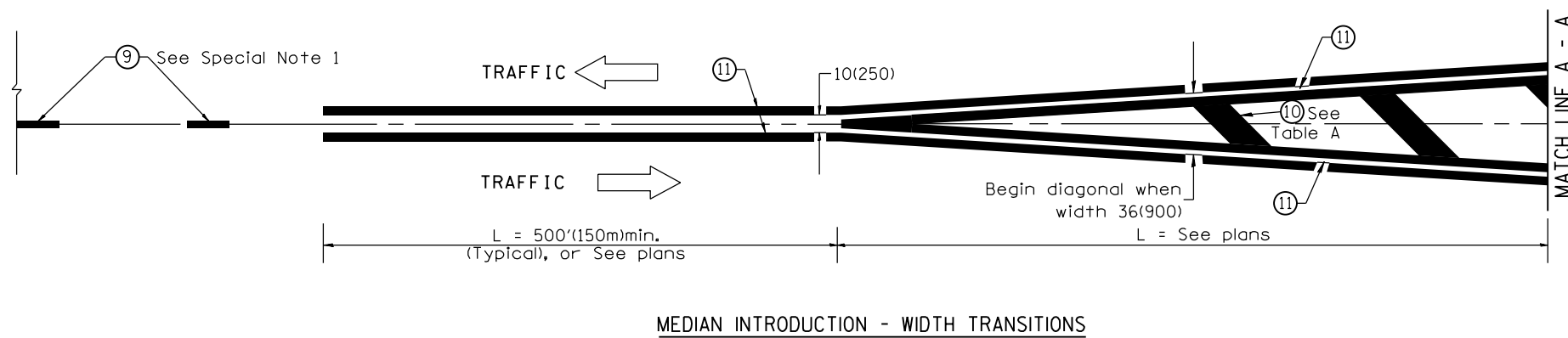
F.A.P. RTE.	SECTION	COUNTY	TOTAL SHEETS	SHEET NO.
646	(Y;126)PP	PEORIA	9	8
FED. ROAD DIST. NO. ILLINOIS FED. AID PROJECT			CONTRACT NO. 68E96	



FLUSH PAVED MEDIAN: RESTRICTED LEFT TURN LANE

TABLE A
RECOMMENDED SPACING BETWEEN DIAGONAL LINES

SPEED LIMIT RANGE	INTERSECTION CHANNELIZATION (Includes Width Transitions for Median and Left Turn Lane Introductions)	
	CONTINUOUS	
Less Than 30 mph (50 km/h)	50' (15m)	15' (5m)
30 - 45 mph (50 - 70 km/h)	75' (23m)	20' (6m)
Over 45 mph (70 km/h)	150' (46m)	30' (9m)



All dimensions are in inches (millimeters) unless otherwise noted.