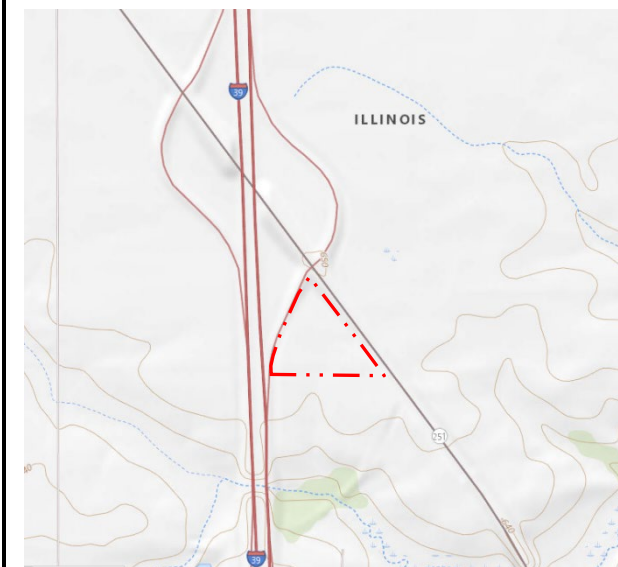




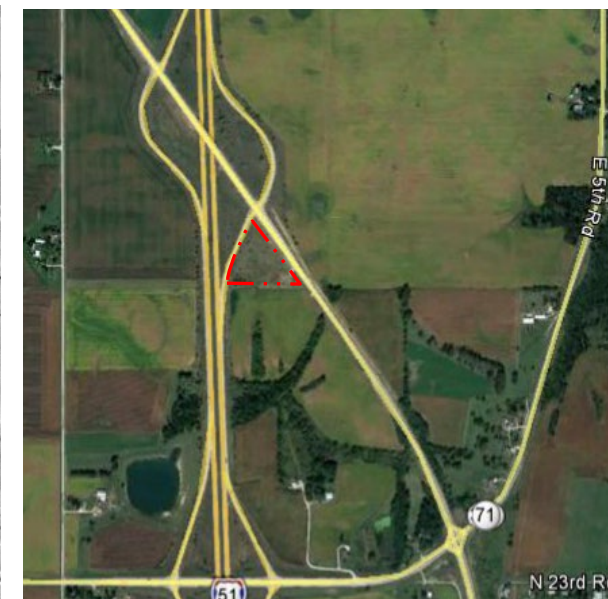
Restoration Plan – Total 5.3 Acres



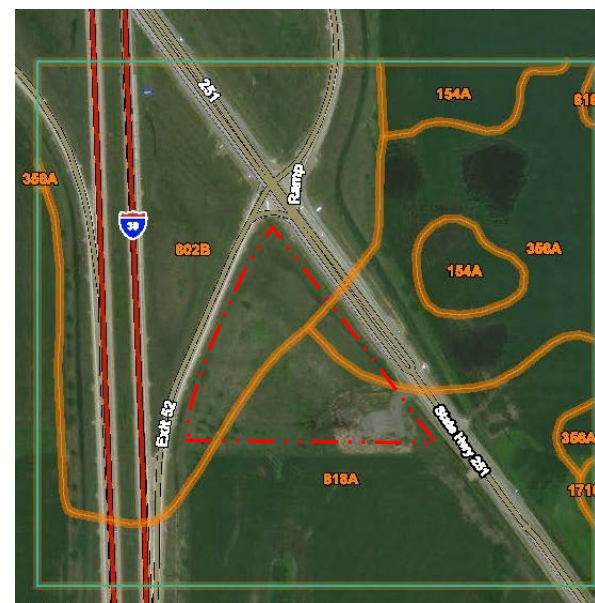
USGS Topographic Map



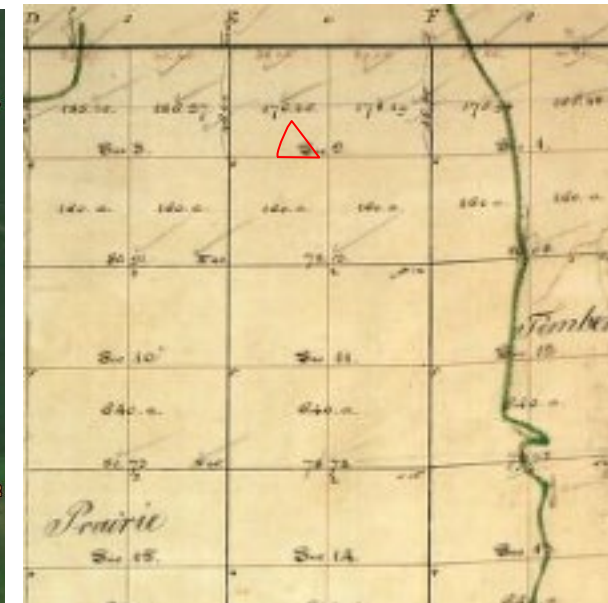
1939 Aerial Photo



2017 Aerial Photo



USGS Soil Map (Soil Description Table Below)



1800 Historic Vegetation Map

CODE	356A	805B	818A
NAME	Elpaso Silty Clay Loam	Orthents, Loamy Undulating	Flanagan-Catlin Silt Loams
Drainage Class	Poorly Drained	Well Drained	Somewhat Poorly Drained
Permeability	Moderate to Moderately Slow	N/A	Moderate to Moderately Slow
Distance to Groundwater	0-12"	42-60"	12-24"
Frequency of Flooding	None	None	None
Frequency of Ponding	Frequent	None	None
Hydric Soil Classification	Yes	No	No
Ecological Classification 1	Wet Loess Upland Prairie	N/A	Loess Upland Prairie
Ecological Classification 2	Ponded Loess Sedge Meadow	N/A	N/A
Ecological Classification 3	Ponded Depressional Sedge Meadow	N/A	N/A
Historic Vegetation	Marsh Grasses and Sedges	N/A	Prairie Grasses

Former Roadkill Disposal Site
0016-20-LASA
 I-39 & IL 251
 Oglesby, IL 61348

County: LaSalle (41.272762, -89.078775)
 Team Section: 344 - LaSalle

Drawn By: Andy Stahr

Planting Plan

- Approximate Property Line
- Native Grasses – 1.8 Acres
- Mesic Prairie – 2.1 Acres
- Mesic-Wet Prairie – 1.4 Acres
- Soil Type Divider Lines



11/04/2020



District 3 – 700 E Norris Drive, Ottawa, IL 61350
 Bureau of Operations – (815) 434-8445