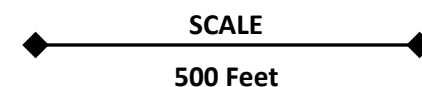
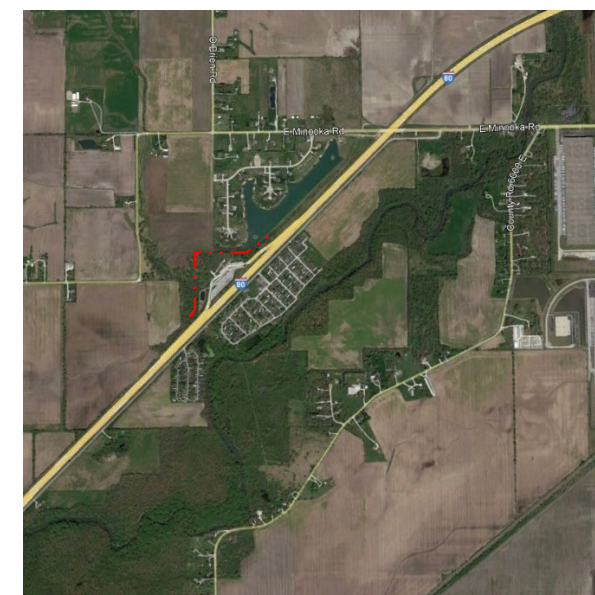




Site Plan – Total Site 7.10 Acres



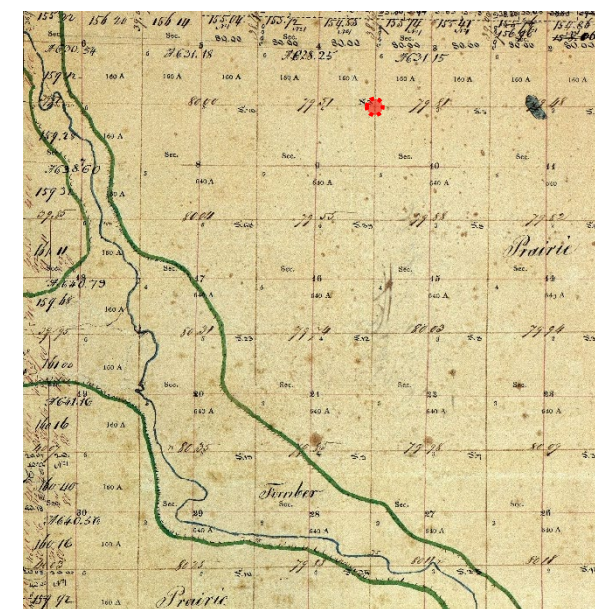
1940 Aerial Photo



2017 Aerial Photo



USGS Soil Map (Soil Description Table Below)



1821 Historic Vegetation Map

CODE	69A	189A
NAME	Milford	Martinton
Drainage Class	Poorly Drained	Somewhat Poorly Drained
Permeability	Moderately Slow	Moderately Slow
Distance to Groundwater	0" – 12"	12" – 24"
Frequency of Flooding	None	None
Frequency of Ponding	Frequent	None
Hydric Soil Classification	Yes	No
Ecological Classification 1	Wet Glacial Drift Upland Prairie – 93%	Moist Glacial Drift Upland – 92%
Ecological Classification 2	Ponded Depressional Sedge Meadow – 5%	Wet Glacial Drift Upland – 4%
Ecological Classification 3	Loamy and Clayey Upland – 1%	Wet Glacial Drift Upland Prairie – 2%
Historic Vegetation	Marsh Grasses and Sedges	Prairie Grass

## Three Rivers Rest Area WB

0025-21-GRUN

I-80 WB, MM 118.4

West of Minooka, IL 60447

County: Grundy (41.447335, -88.328458)

Team Section: 351 - Morris

Drawn By: Andy Stahr

### Site Plan

Approximate Property Line

780 Topographic Contour Lines (10' Intervals)

Soil Type Divider Lines

Prairie Areas – 3.50 Acres

Savanna Areas – 3.60 Acres



02/28/2024



District 3 – 700 E Norris Drive, Ottawa, IL 61350  
Bureau of Operations – (815) 434-8445