

INDEX OF SHEETS

1. COVER SHEET
2. GENERAL NOTES
3. SUMMARY OF QUANTITIES
4. SCHEDULES OF QUANTITIES
5. PROPOSED TYPICAL SECTIONS
- 6-7. REMOVAL PLAN SHEETS
- 8-9. PROPOSED PLAN SHEETS
10. ADA DETAIL SHEET
11. SIDEWALK SIDE CURB DETAIL

08-02-2024 LETTING ITEM 050

HIGHWAY STANDARDS

- 000001-08 STANDARD SYMBOLS, ABBREVIATIONS, AND PATTERNS
- 280001-07 TEMPORARY EROSION CONTROL SYSTEMS
- 424001-11 PERPENDICULAR CURB RAMPS FOR SIDEWALKS
- 442201-03 CLASS C&D PATCHES
- 606001-08 CONC CURB TYPE B AND COMB CONC CURB AND GUTTER
- 701006-05 OFF-RD OPERATIONS 2L 2W 15' TO 24" FROM PAVEMENT EDGE
- 701501-06 URBAN LANE CLOSURE, 2L, 2W, UNDIVIDED
- 701801-06 SIDEWALK, CORNER, OR CROSSWALK CLOSURE
- 701901-09 TRAFFIC CONTROL DEVICES

UTILITIES

AMEREN (ELECTRIC)
8420 N. UNIVERSITY ST.
PEORIA, IL 61615
ATTN: ZACH ALEXANDER
309-210-7588

COMCAST
3517 N. DRIES LANE
PEORIA, IL 61604
ATTN: PAUL KAUSCH
309-643-3986

AMEREN (GAS)
8420 N. UNIVERSITY ST.
PEORIA, IL 61615
ATTN: ZACH WILSON
309-645-4458

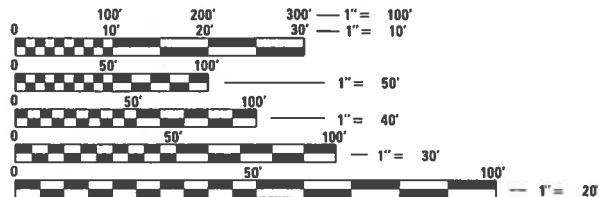
i3 BROADBAND
602 HIGH POINT LANE
EAST PEORIA, IL 61611
ATTN: FRANK MARTINEZ
217-671-4211

AT&T
2315 N. KNOXVILLE AVE.
PEORIA, IL 61604
ATTN: BILL CONOVER
309-550-8043

VILLAGE OF CREVE COEUR
WATER DEPARTMENT
ATTN: BROCK YOUNG
309-214-0153

VILLAGE OF CREVE COEUR
103 N. THORNCREST AVE.
CREVE COEUR, IL
ATTN: TERRY KEOGEL
309-251-8838

CATALOG NO. 036524-00
CONTRACT NO. 89861



FULL SIZE PLANS HAVE BEEN PREPARED USING STANDARD ENGINEERING SCALES. REDUCED SIZED PLANS WILL NOT CONFORM TO STANDARD SCALES. IN MAKING MEASUREMENTS ON REDUCED PLANS, THE ABOVE SCALES MAY BE USED.

J.U.L.I.E.
JOINT UTILITY LOCATION INFORMATION FOR EXCAVATION
1-800-892-0123
OR 811

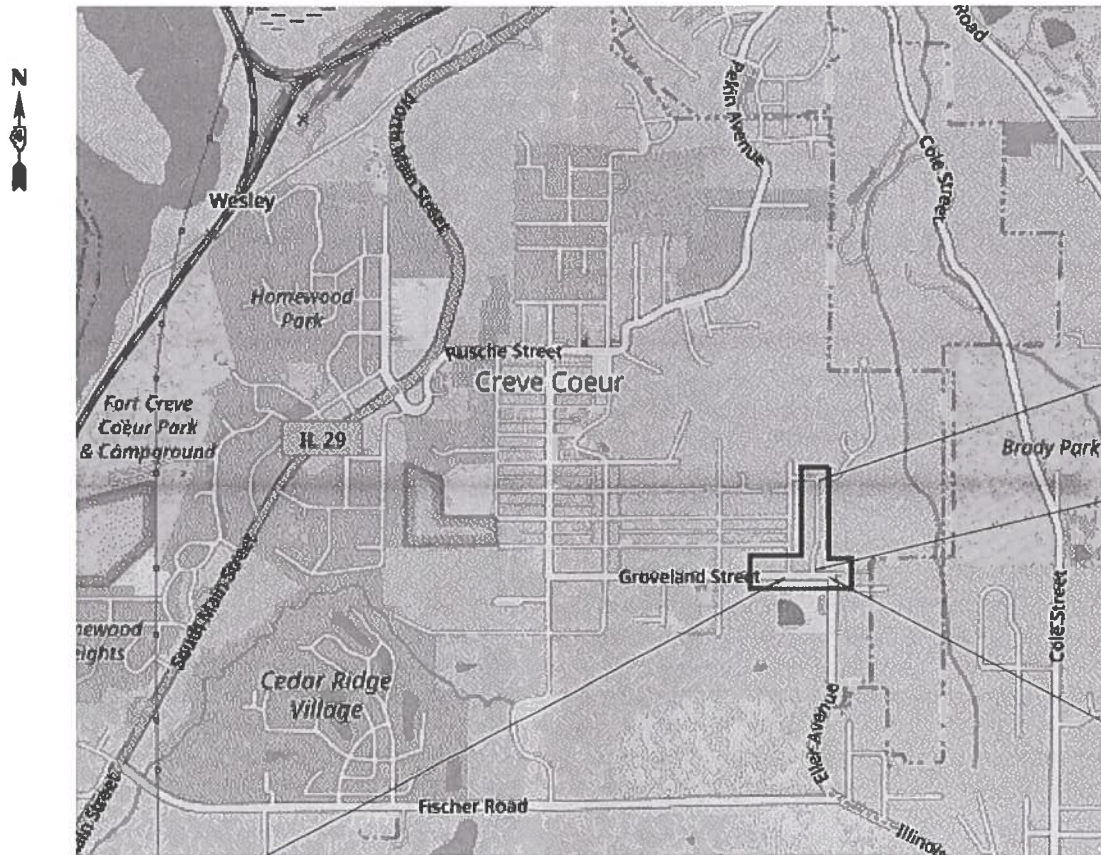
STATE OF ILLINOIS
DEPARTMENT OF TRANSPORTATION
DIVISION OF HIGHWAYS

**PLANS FOR PROPOSED
LOCAL AGENCY IMPROVEMENT
FEDERAL-AID PROJECT**

SAFE ROUTES TO SCHOOL
SECTION: 22-00049-00-SW
PROJECT: 4FZB(537)
TAZEWELL COUNTY
VILLAGE OF CREVE COEUR
C-94-076-24



LOCATION OF SECTION INDICATED THUS: [Symbol]
VILLAGE OF CREVE COEUR, ILLINOIS



END IMPROVEMENTS
ELEANOR CT
STA 61+39

BEGIN IMPROVEMENTS
ELEANOR CT
STA 50+43

END IMPROVEMENTS
GROVELAND ST
STA 17+73

BEGIN IMPROVEMENTS
GROVELAND ST
STA 13+08

LOCATION MAP

NOT TO SCALE
SECTION 5,8 TOWNSHIP T25N RANGE R4W

GROVELAND ST.: FUNCTIONAL CLASSIFICATION - MAJOR COLLECTOR LENGTH = 465 FT. = 0.088 MILE
ELEANOR CT.: FUNCTIONAL CLASSIFICATION - LOCAL ROAD LENGTH = 1096 FT. = 0.210 MILE

**PRINTED BY THE AUTHORITY
OF THE STATE OF ILLINOIS**

F.A. RTE.	SECTION	COUNTY	TOTAL SHEETS	SHEET NO.
	22-00049-00-SW	TAZEWELL	11	1
		ILLINOIS	CONTRACT NO. 89861	

APPROVED APRIL 29 2024
Mayor Fred Lang
MAYOR OF CREVE COEUR

PASSED 05-21 2023
Tom Davis
DISTRICT FOUR ENGINEER OF
LOCAL ROADS & STREETS

Releasing For Bid Based on Limited Review May 22 2024
Paul G. James
DEPUTY DIRECTOR OF HIGHWAYS,
REGION THREE ENGINEER

STATE OF ILLINOIS
DEPARTMENT OF TRANSPORTATION

JESSICA A SMITH
062-069168
LICENSED PROFESSIONAL ENGINEER OF ILLINOIS

Jessie Smith
JESSICA A. SMITH

4-29-24 11-30-25
DATE EXPIRES



4603 NORTH GALENA ROAD
PEORIA HEIGHTS, ILLINOIS 61616
PHONE: (309) 687-5566
WWW.HERMANNASSOC.COM
ILLINOIS PROFESSIONAL DESIGN FIRM NO. 184.004714

TRANSPORTATION • MUNICIPAL ENGINEERING • LAND DEVELOPMENT
ASBESTOS INSPECTION • CONSTRUCTION OBSERVATION

GENERAL NOTES

- ALL CONSTRUCTION SHALL COMPLY WITH THE CURRENT EDITIONS OF THE ILLINOIS DEPARTMENT OF TRANSPORTATION'S "STANDARD SPECIFICATIONS FOR ROAD AND BRIDGE CONSTRUCTION." - HEREINAFTER REFERRED TO AS THE "STANDARD SPECIFICATIONS," "SUPPLEMENTAL SPECIFICATIONS AND RECURRING SPECIAL PROVISIONS," AND THE "MANUAL ON UNIFORM TRAFFIC CONTROL DEVICES."
- THE CONTRACTOR SHALL VERIFY ALL BENCHMARKS AND HORIZONTAL CONTROL POINTS FOR ACCURACY PRIOR TO STARTING CONSTRUCTION AND REPORT ANY DISCREPANCIES TO THE ENGINEER.
- VEGETATION IN THE FORM OF BUSHES, SHRUBS, OR OTHER SMALL PLANT MATERIAL THAT INTERFERES WITH THE PROPOSED CONSTRUCTION SHALL BE TRIMMED OR REMOVED ONLY TO THE DEGREE WHICH IS NECESSARY TO ACCOMPLISH THE PROPOSED WORK. THIS WORK SHALL BE CONSIDERED INCIDENTAL TO THE CONTRACT.
- THE CONTRACTOR SHALL NOTIFY AND RECEIVE APPROVAL FROM THE ENGINEER PRIOR TO REMOVING OR COVERING UP ANY SURVEY MONUMENTS OR PROPERTY MARKERS.
- THE CONTRACTOR SHALL CONFINE THE CONSTRUCTION WITHIN THE RIGHT OF WAY, EASEMENTS, OR CONSTRUCTION LIMITS SHOWN ON THE PLANS.
- CONTRACTOR SHALL TAKE REASONABLE PRECAUTIONS SO AS TO PREVENT DAMAGE FROM OCCURRING TO ALL EXISTING BUILDINGS, STRUCTURES, PUBLIC, AND PRIVATE PROPERTY AS A RESULT OF CONSTRUCTION.
- SIGNS, MAILBOXES, FENCE, FENCE RAILS, POSTS, LANDSCAPING ITEMS NOT IDENTIFIED ON THE BID SCHEDULE WHICH ARE DAMAGED OR DISTURBED DURING CONSTRUCTION SHALL BE REPLACED WITH LIKE MATERIALS AND CONSTRUCTION. THIS WORK SHALL BE INCLUDED IN THE CONTRACT AMOUNT.
- ACCESS MUST BE MAINTAINED TO ALL EXISTING PROPERTIES DURING CONSTRUCTION IN ACCORDANCE WITH ARTICLE 107.09 UNLESS ARRANGEMENTS ARE MADE IN WRITING BY THE CONTRACTOR WITH THE PROPERTY OWNERS WITH A COPY TO THE ENGINEER FOR SHORT TERM CLOSURES.
- THE CONTRACTOR SHALL COMPLY WITH THE LEGAL STREET LOADING LIMITS ESTABLISHED BY THE LOCAL AGENCY. THE CONTRACTOR SHALL BE RESPONSIBLE FOR ANY DAMAGE CAUSED BY LUGS OR CLEATS ON TREADS OR WHEELS, EXCESSIVE WEIGHTS, AND LOADS, ETC.
- ALL LIMITS OF REMOVAL SHALL BE SAWCUT FULL DEPTH PRIOR TO REMOVAL. ALL SAWCUTTING WILL BE CONSIDERED INCIDENTAL TO THE CONTRACT.
- EARTH EXCAVATION AND BACKFILL FOR THE PROPOSED IMPROVEMENTS SHALL BE INCLUDED IN THE UNIT COST OF THE VARIOUS PROJECT ITEMS.

UTILITY NOTES

- THE LOCATIONS OF EXISTING UTILITIES AS SHOWN ON THE PLANS ARE BASED ON CAREFUL FIELD INVESTIGATION AND THE BEST INFORMATION AVAILABLE, BUT THEY ARE NOT GUARANTEED. IT SHALL BE THE CONTRACTOR'S RESPONSIBILITY TO ASCERTAIN THEIR EXACT LOCATION FROM THE UTILITY COMPANIES AND BY FIELD INSPECTION.
- THE CONTRACTOR SHALL BE RESPONSIBLE FOR PROTECTING UTILITY PROPERTY FROM CONSTRUCTION OPERATIONS AS OUTLINED IN ARTICLE 107.39 OF THE "STANDARD SPECIFICATIONS." CALL J.U.L.I.E. AT 1-800-892-0123 A MINIMUM OF 48 HOURS IN ADVANCE OF DIGGING OPERATIONS. THE CONTRACTOR SHALL COORDINATE ANY REQUIRED UTILITY ADJUSTMENTS WITH THE APPROPRIATE UTILITY COMPANY.
- ABANDONED UNDERGROUND UTILITIES THAT CONFLICT WITH CONSTRUCTION SHALL BE DISPOSED OF OUTSIDE THE LIMITS OF RIGHT OF WAY ACCORDING TO ARTICLE 202.03 OF THE STANDARD SPECIFICATIONS AND AS DIRECTED BY THE ENGINEER. THIS WORK WILL NOT BE PAID FOR SEPARATELY, BUT SHALL BE INCLUDED IN THE COST OF THE CONTRACT.
- ANY ADJUSTMENTS TO UTILITIES AND/OR APPURTENANCES INCLUDING BUT NOT LIMITED TO: VALVES, MANHOLES, HYDRANTS, POLES, PEDESTALS, ETC. SHALL BE PERFORMED BY THE RESPECTIVE UTILITY COMPANY OWNER. THE CONTRACTOR SHALL COORDINATE AND COOPERATE WITH THE UTILITY TO ACCOMPLISH THE WORK. THIS WORK WILL NOT BE PAID FOR SEPARATELY, BUT SHALL BE CONSIDERED INCIDENTAL TO THE CONTRACT.

HORIZONTAL & VERTICAL CONTROL POINTS – INFORMATION

NUMBER	NORTHING	EASTING	STATION	OFFSET	ELEVATION	DESCRIPTION
CP #0	10000	1447865.093	2459578.241	17+65.52 37.32 RT	732.072	CPH SET IR/CAP
CP #1	10001	1447870.647	2459387.765	15+75.12 29.43 RT	735.318	CPH SET IR/CAP
CP #2	10002	1447864.397	2459136.369	13+23.67 32.60 RT	740.959	CPH SET IR/CAP
CP #3	10003	1448139.441	2459391.337	52+34.95 24.43 LT	729.761	CHIS X
CP #4	10004	1448399.695	2459492.160	55+06.98 24.78 RT	715.769	CHIS X
CP #5	10005	1448561.444	2459440.964	56+69.56 23.72 LT	710.332	CHIS X
CP #6	10006	1448776.497	2459485.602	58+83.84 24.49 RT	699.286	CHIS X
CP #7	10007	1449076.485	2459472.166	NORTH OF ELEANOR CT.	690.995	CPH SET IR/CAP

BENCHMARK – INFORMATION

NUMBER	NORTHING	EASTING	STATION	OFFSET	ELEVATION	DESCRIPTION
BM1	1447924.698	2459446.920	50+23.63	35.12 RT	735.82	HYD N-NE BOLT
BM2	1447872.831	2459117.831	13+05.24	23.94 RT	741.88	HYD N-NE BOLT
BM3	1448998.493	2459481.637	61+05.87	24.22 RT	693.32	HYD N-NE BOLT

ALIGNMENT INFORMATION – GROVELAND STREET

POINT	STATION	NORTHING	EASTING
POT STA.	10+08.54	1447893.132	2458820.866
POT STA.	18+24.71	1447903.134	2459636.967

ALIGNMENT INFORMATION – ELEANOR COURT

POINT	STATION	NORTHING	EASTING
POT STA.	50+00.00	1447900.381	2459412.279
PC STA.	51+59.64	1448059.987	2459409.125
PI STA.	52+38.31	1448138.640	2459407.467
PRC STA.	53+14.57	1448210.902	2459438.571
PI STA.	53+91.92	1448281.951	2459469.149
PT STA.	54+66.99	1448359.293	2459468.054
POT STA.	61+54.32	1449046.536	2459456.614

MODEL: Default; FILE NAME: P:\Projects\350_Creve Coeur\350.003.23_SRTS_Phase 1 E:\Drawings\Sheets\07_EleanorSRTS_01t_GeneralNotes.dgn



USER NAME = jessica	DESIGNED - MHS	REVISED - 4/29/2024
	DRAWN - MHS	REVISED -
PLOT SCALE = 0.1667' / in.	CHECKED - JAS	REVISED -
PLOT DATE = 4/29/2024	DATE - 3/15/2024	REVISED -

**STATE OF ILLINOIS
DEPARTMENT OF TRANSPORTATION**

**GROVELAND ST AND ELEANOR CT
GENERAL NOTES**

SCALE: SHEET OF SHEETS STA. TO STA.

F.A. RTE.	SECTION	COUNTY	TOTAL SHEETS	SHEET NO.
	22-00049-00-SW	TAZEWELL	11	2
CONTRACT NO. 89861				
ILLINOIS FED. AID PROJECT				

SUMMARY OF QUANTITIES

PAY ITEM	PAY ITEM DESCRIPTION	UNIT	QUANTITY
25200100	SODDING	SQ YD	506
35101600	AGGREGATE BASE COURSE, TYPE B 4"	SQ YD	616
42400800	DETECTABLE WARNINGS	SQ FT	23
44000500	COMBINATION CURB AND GUTTER REMOVAL	FOOT	55
44000600	SIDEWALK REMOVAL	SQ FT	2574
44201335	CLASS C PATCHES, TYPE IV, 8 INCH	SQ YD	45
60603800	COMBINATION CONCRETE CURB AND GUTTER, TYPE B-6.12	FOOT	55
67100100	MOBILIZATION	L SUM	1
72400500	RELOCATE SIGN PANEL ASSEMBLY - TYPE A	EACH	1
X4240420	PORTLAND CEMENT CONCRETE SIDEWALK 4 INCH (SPECIAL)	SQ FT	5752
X7010216	TRAFFIC CONTROL AND PROTECTION, (SPECIAL)	L SUM	1
Z0013798	CONSTRUCTION LAYOUT	L SUM	1

Model: Default
 File Name: F:\Projects\350_Cover_Cover\350_003.73_SITP_Phase 16_H\Drawings\Sheets\03_Elements\SIT_SummaryOfQuantities.dgn



USER NAME = Jessica	DESIGNED - MHS	REVISED - 4/29/2024
PLOT SCALE = 0.1667" / in.	DRAWN - MHS	REVISED -
PLOT DATE = 4/29/2024	CHECKED - JAS	REVISED -
	DATE - 3/15/2024	REVISED -

STATE OF ILLINOIS
DEPARTMENT OF TRANSPORTATION

GROVELAND ST AND ELEANOR CT
SUMMARY OF QUANTITIES

SCALE: SHEET OF SHEETS STA. TO STA.

F.A. RTE.	SECTION	COUNTY	TOTAL SHEETS	SHEET NO.
	22-00049-00-SW	TAZEWELL	11	3
CONTRACT NO. 89861				
ILLINOIS FED. AID PROJECT				

SODDING					25200100
LOCATION					AREA
ALIGNMENT	STATION	TO	STATION	RT/LT	SQ YD
GROVELAND ST	13+08.11	TO	16+12.15	RT	40.4
	16+62.32	TO	17+73.04	RT	15.4
ELEANOR CT	50+43.49	TO	52+40.30	RT	135.8
	55+53.28	TO	56+18.09	LT	47.4
	56+36.64	TO	57+01.18	RT	47.9
	58+96.23	TO	59+06.72	RT	6.7
	59+18.68	TO	59+68.58	RT	34.4
	59+42.51	TO	61+30.16	LT	131.2
	61+09.41	TO	61+24.66	RT	46.5
TOTAL					506

SIDEWALK SCHEDULE					X4240420	35101600
LOCATION					PCC SIDEWALK 4" (SPECIAL)	AGG BASE COURSE, TY B, 4"
					AREA	AREA
ALIGNMENT	STATION	TO	STATION	RT/LT	SQ FT	SQ YD
GROVELAND ST	13+08.11	TO	16+12.15	RT	1818.5	184.6
	16+62.32	TO	17+73.04	RT	658.2	67.0
ELEANOR CT	50+43.49	TO	52+40.30	RT	954.7	106.1
	55+53.28	TO	56+18.09	LT	324.0	36.0
	56+36.74	TO	57+01.18	RT	322.0	35.8
	58+96.23	TO	59+06.72	RT	52.5	5.8
	59+18.68	TO	59+68.58	RT	249.5	27.7
	59+42.51	TO	61+30.16	LT	965.3	107.3
	61+09.41	TO	61+24.66	RT	406.3	45.1
TOTAL					5752	616

DETECTABLE WARNINGS		42400800
LOCATION		AREA
		SQ FT
ELEANOR CT NORTH END (LT)		12.2
ELEANOR CT NORTH END (RT)		10.0
TOTAL		23

SIDEWALK REMOVAL					44000600
LOCATION					AREA
ALIGNMENT	STATION	TO	STATION	RT/LT	SQ FT
GROVELAND ST	13+08.11	TO	16+12.15	RT	1188.8
	16+62.32	TO	17+73.04	RT	429.6
ELEANOR CT	50+43.49	TO	51+61.42	RT	590.0
	61+09.41	TO	61+24.66	RT	365.0
TOTAL					2574

COMBINATION CONCRETE CURB & GUTTER		44000500	60603800
LOCATION		COMBINATION CURB AND GUTTER REMOVAL	COMBINATION CONCRETE CURB AND GUTTER, TYPE B-6.12
		LENGTH	LENGTH
		FOOT	FOOT
ELEANOR CT NORTH END (LT)		23.6	23.6
ELEANOR CT NORTH END (RT)		31.2	31.2
TOTAL		55	55

CLASS C PATCHES, TYPE IV, 8 INCH		44201335
LOCATION		AREA
		SQ YD
NORTH END OF ELEANOR CT		45.0
TOTAL		45

RELOCATE SIGN PANEL ASSEMBLY - TYPE A			72400500
LOCATION			UNIT
STATION	OFFSET	RT/LT	EACH
61+25.27	24.13	RT	1.0
TOTAL			1

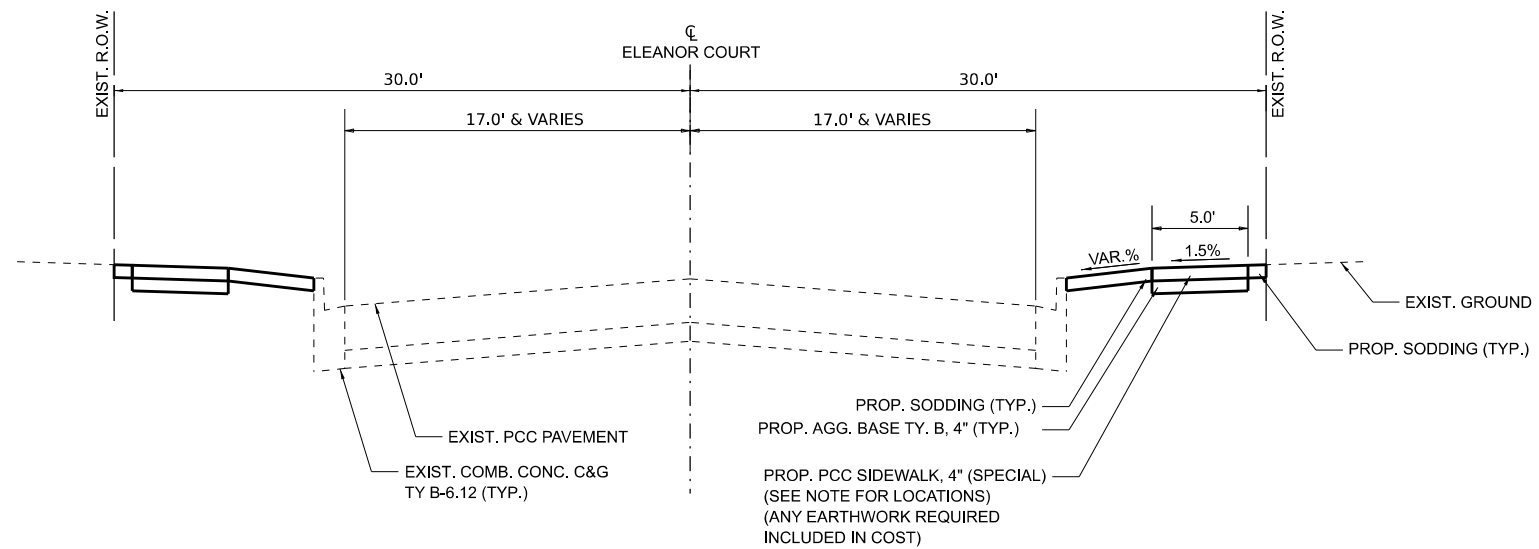
MODEL: ScheduleOfQuantities.dwg
 FILE NAME: E:\PROJECTS\350_Crewe Coen\350_003_23_SRTS Phase 1 E. I\Drawings\Sheets\04_EleanorSRTS_Sht_ScheduleOfQuantities.dgn

USER NAME = jessica	DESIGNED - MHS	REVISED - 4/29/2024
PLOT SCALE = 0.16666633 ' / in.	DRAWN - MHS	REVISED -
PLOT DATE = 4/29/2024	CHECKED - JAS	REVISED -
	DATE - 3/15/2024	REVISED -

**STATE OF ILLINOIS
DEPARTMENT OF TRANSPORTATION**

GROVELAND ST AND ELEANOR CT SCHEDULE OF QUANTITIES			
SCALE:	SHEET	OF	SHEETS
	STA. ___+___	TO	STA. ___+___

F.A. RTE.	SECTION	COUNTY	TOTAL SHEETS	SHEET NO.
	22-00049-00-SW	TAZEWELL	11	4
CONTRACT NO. 89861				
			ILLINOIS	FED. AID PROJECT

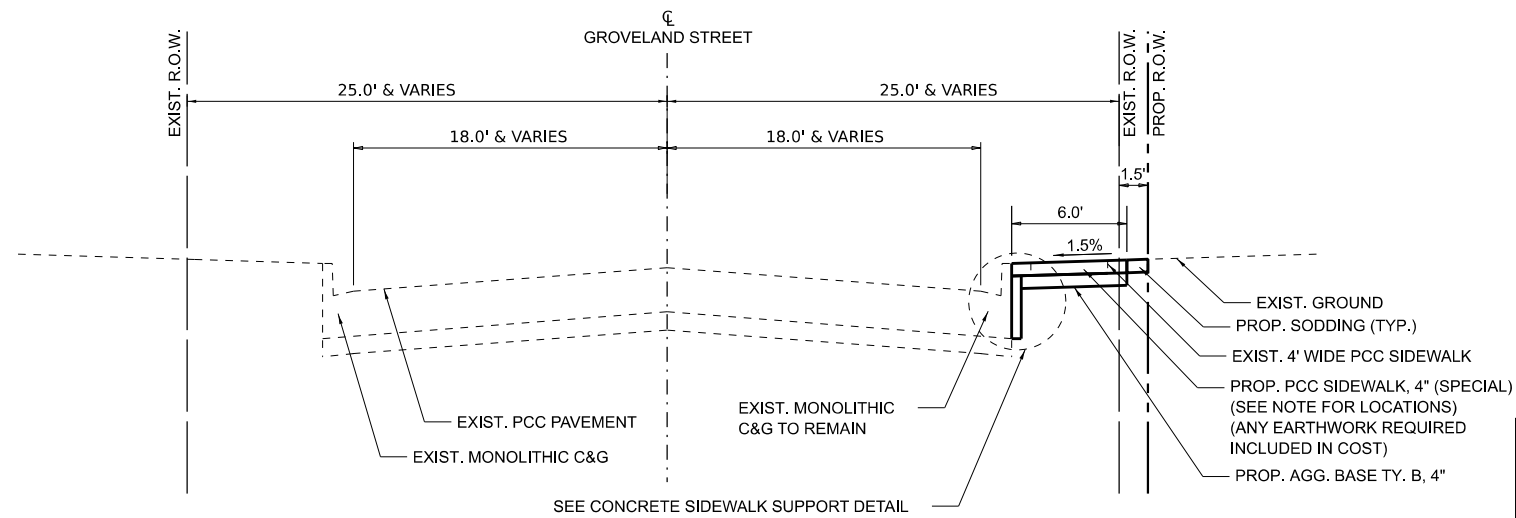


PROPOSED ELEANOR CT TYPICAL SECTION

NOT TO SCALE
STA 50+43 TO STA 61+39

NOTE: PROPOSED SIDEWALK LOCATIONS

- STA 50+43.49 RT TO 52+40.32 RT
- STA 55+53.28 LT TO 56+18.09 LT
- STA 56+36.74 RT TO 57+01.18 RT
- STA 58+96.23 RT TO 59+06.72 RT
- STA 59+18.68 RT TO 59+68.58 RT
- STA 59+42.51 LT TO 61+24.60 LT
- STA 61+09.41 RT TO 61+23.66 RT

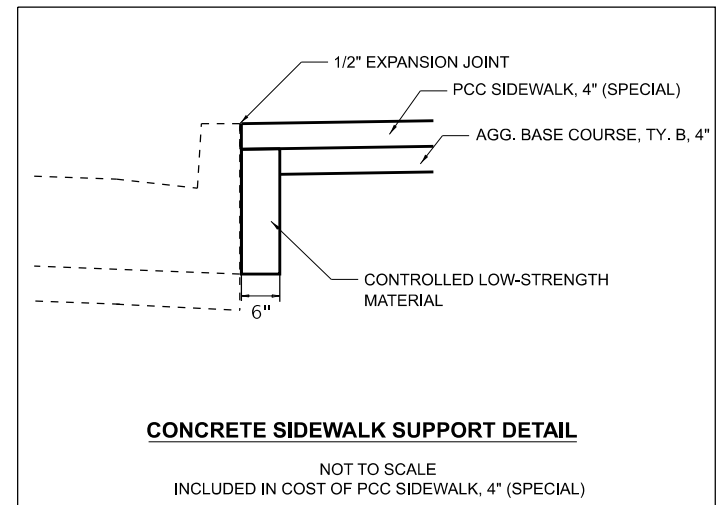


PROPOSED GROVELAND ST TYPICAL SECTION

NOT TO SCALE
STA 13+08 TO STA 17+73

NOTE: PROPOSED SIDEWALK LOCATIONS

- STA 13+08.36 RT TO 16+12.20 RT
- STA 16+62.31 RT TO 17+72.97 RT



CONCRETE SIDEWALK SUPPORT DETAIL

NOT TO SCALE
INCLUDED IN COST OF PCC SIDEWALK, 4" (SPECIAL)

MODEL: T:\p\h\15\sheet1
FILE NAME: E:\proj\350\350_Crete\Drawings\Sheet1\EleanorRTS_sht.dwg

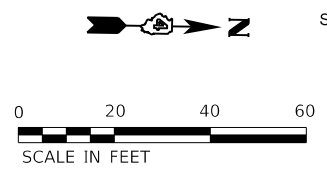
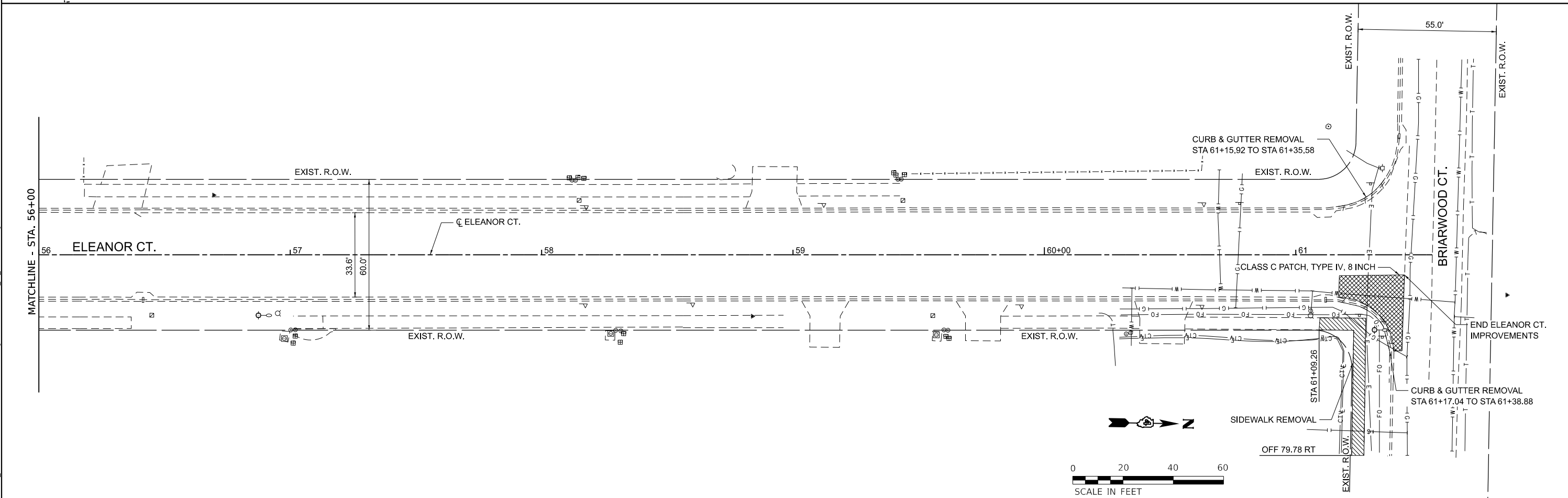
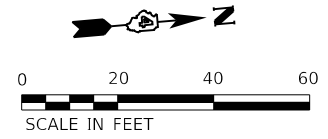
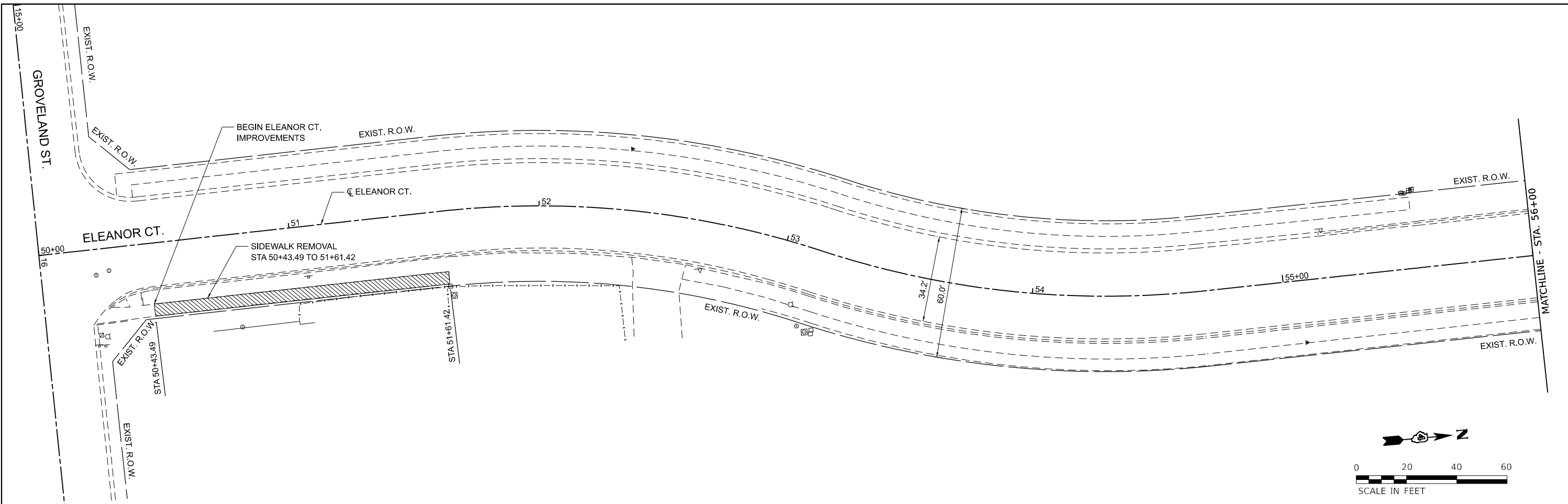
USER NAME = jessica	DESIGNED - MHS	REVISED - 4/29/2024
	DRAWN - MHS	REVISED - _____
PLOT SCALE = 0.16666633' / in.	CHECKED - JAS	REVISED - _____
PLOT DATE = 4/29/2024	DATE - 3/6/2024	REVISED - _____

**STATE OF ILLINOIS
DEPARTMENT OF TRANSPORTATION**

**GROVELAND ST AND ELEANOR CT
TYPICAL SECTIONS**

SCALE: SHEET 1 OF 1 SHEETS STA. ___+___ TO STA. ___+___

F.A. RTE.	SECTION	COUNTY	TOTAL SHEETS	SHEET NO.
	22-00049-00-SW	TAZEWELL	11	5
CONTRACT NO. 89861				
ILLINOIS FED. AID PROJECT				



MODEL: Double Plans - E11mnc1
 FILE NAME: F:\Projects\250_Cover\250_003_23_SRTS Phase1 & M\Drawings\Sheet\EleanorSRTS_sht_Removal Plans.dgn



USER NAME = Jessica	DESIGNED - MHS	REVISED - 4/29/2024
PLOT SCALE = 0.16666633' / in.	DRAWN - MHS	REVISED -
PLOT DATE = 4/29/2024	CHECKED - JAS	REVISED -
	DATE - 3/7/2024	REVISED -

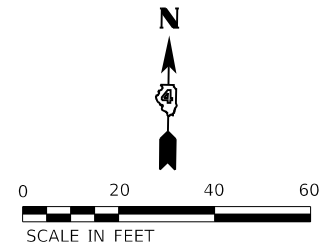
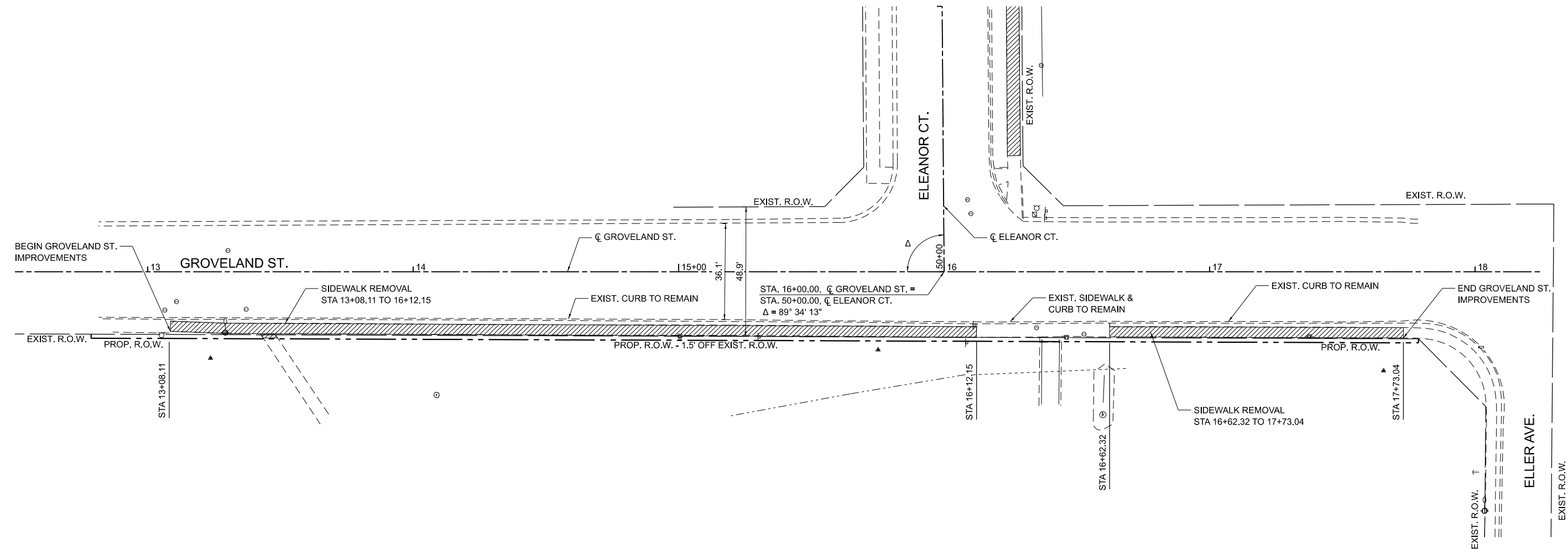
STATE OF ILLINOIS
DEPARTMENT OF TRANSPORTATION

GROVELAND ST AND ELEANOR CT
REMOVAL PLAN

SCALE: 1"=20' SHEET 1 OF 2 SHEETS STA. TO STA.

F.A. RTE.	SECTION	COUNTY	TOTAL SHEETS	SHEET NO.
	22-00049-00-SW	TAZEWELL	11	6
CONTRACT NO. 89861			ILLINOIS FED. AID PROJECT	

MODEL: D:\p1\p1\Drawings\Sheet\Grovland\Grovland.dwg
 FILE NAME: F:\p1\p1\Drawings\Sheet\Grovland\Grovland.dwg
 MODEL: D:\p1\p1\Drawings\Sheet\Grovland\Grovland.dwg



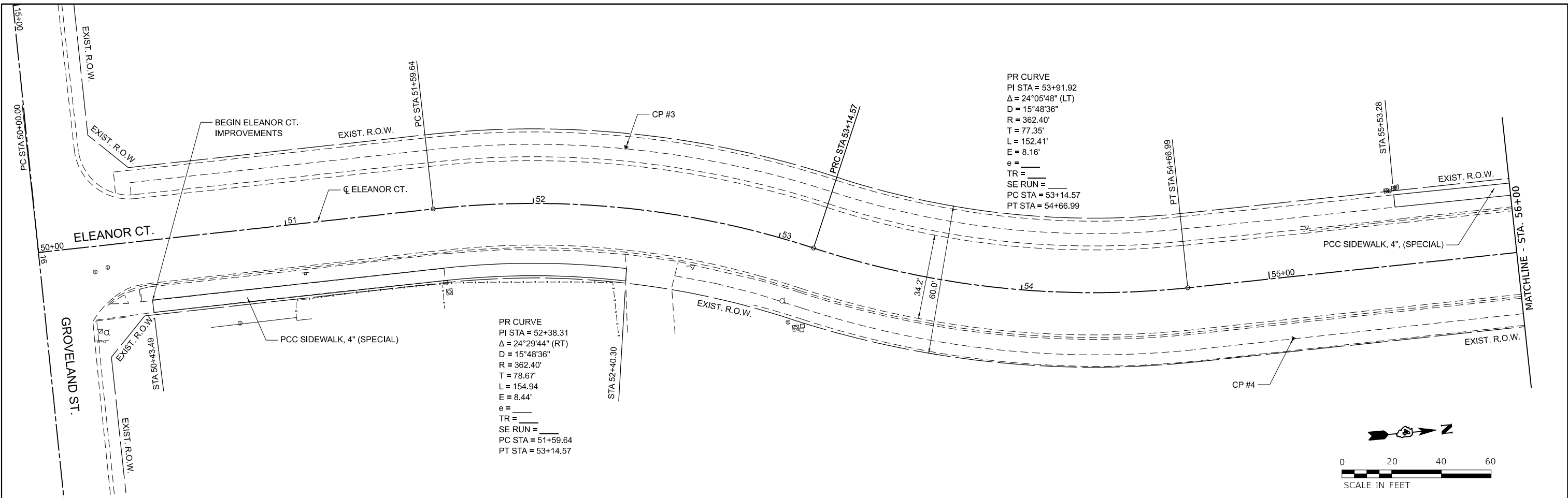
USER NAME = Jessica	DESIGNED - MHS	REVISED - 4/29/2024
	DRAWN - MHS	REVISED -
PLOT SCALE = 0.16666633' / in.	CHECKED - JAS	REVISED -
PLOT DATE = 4/29/2024	DATE - 3/7/2024	REVISED -

**STATE OF ILLINOIS
 DEPARTMENT OF TRANSPORTATION**

**GROVELAND ST AND ELEANOR CT
 REMOVAL PLAN**

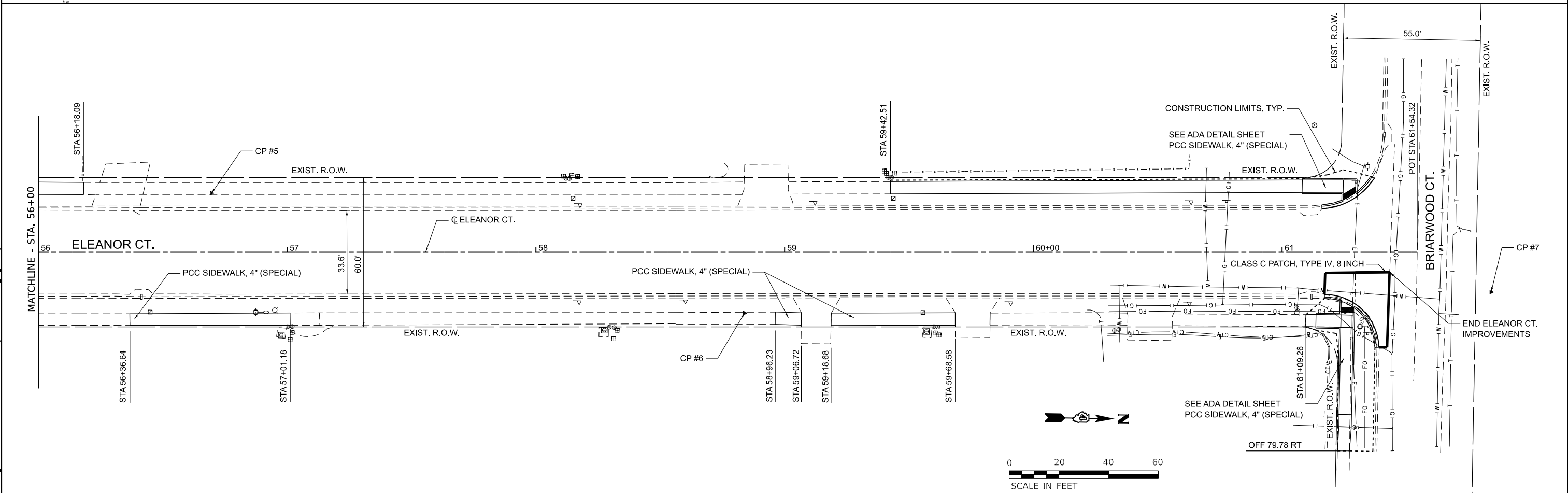
SCALE: 1"=20' SHEET 2 OF 2 SHEETS STA. TO STA.

F.A. RTE.	SECTION	COUNTY	TOTAL SHEETS	SHEET NO.
	22-00049-00-SW	TAZEWELL	11	7
CONTRACT NO. 89861				
ILLINOIS FED. AID PROJECT				



PR CURVE
 PI STA = 53+91.92
 $\Delta = 24^{\circ}05'48''$ (LT)
 D = 15'48'36"
 R = 362.40'
 T = 77.35'
 L = 152.41'
 E = 8.16'
 e = _____
 TR = _____
 SE RUN = _____
 PC STA = 53+14.57
 PT STA = 54+66.99

PR CURVE
 PI STA = 52+38.31
 $\Delta = 24^{\circ}29'44''$ (RT)
 D = 15'48'36"
 R = 362.40'
 T = 78.67'
 L = 154.94
 E = 8.44'
 e = _____
 TR = _____
 SE RUN = _____
 PC STA = 51+59.64
 PT STA = 53+14.57



CONSTRUCTION LIMITS, TYP.
 SEE ADA DETAIL SHEET
 PCC SIDEWALK, 4" (SPECIAL)

SEE ADA DETAIL SHEET
 PCC SIDEWALK, 4" (SPECIAL)
 OFF 79.78 RT

MODEL: Double Plans - 8/11/2024
 FILE NAME: F:\Projects\250_Cover\250_Sheet\250_Sheet\250_Sheet\250_Sheet.dwg
 USER: jessica

HERMANN & Associates, LLC
 Civil Engineers

USER NAME = jessica	DESIGNED - MHS	REVISED - 4/29/2024
PLOT SCALE = 0.16666633' / 1ft.	DRAWN - MHS	REVISED -
PLOT DATE = 4/29/2024	CHECKED - JAS	REVISED -
	DATE - 3/7/2024	REVISED -

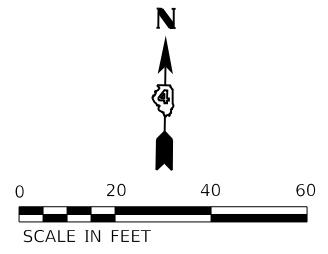
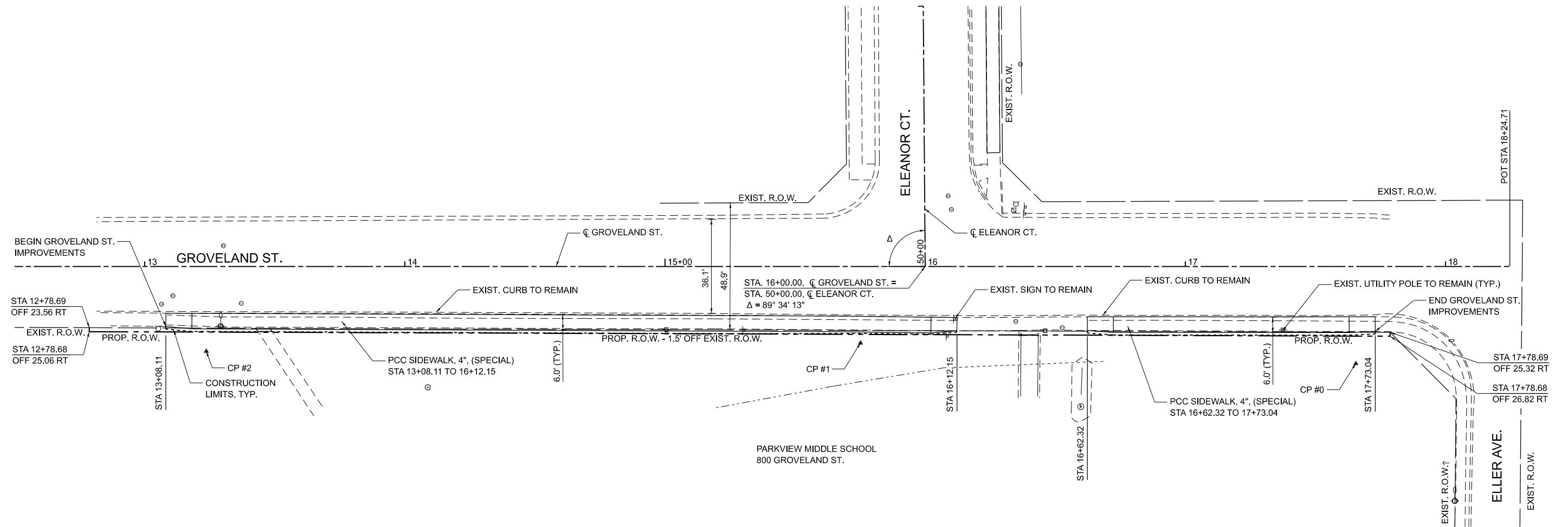
**STATE OF ILLINOIS
 DEPARTMENT OF TRANSPORTATION**

**GROVELAND ST AND ELEANOR CT
 PROPOSED PLAN**

SCALE: 1"=20' SHEET 1 OF 2 SHEETS STA. TO STA.

F.A. RTE.	SECTION	COUNTY	TOTAL SHEETS	SHEET NO.
	22-00049-00-SW	TAZEWELL	11	8
		CONTRACT NO. 89861		
ILLINOIS FED. AID PROJECT				

MODEL: D:\p1\m11\Drawings\Sheets\Grovland\Grovland.dgn
 FILE NAME: F:\p1\m11\Drawings\Sheets\Grovland\Grovland.dgn



HERMANN & Associates, LLC
 Civil Engineers

USER NAME = Jessica	DESIGNED - MHS	REVISED - 4/29/2024
DRAWN - MHS	CHECKED - JAS	REVISED -
PLOT SCALE = 0.16666633' / 1ft	DATE - 3/7/2024	REVISED -
PLOT DATE = 4/29/2024		

**STATE OF ILLINOIS
 DEPARTMENT OF TRANSPORTATION**

**GROVELAND ST AND ELEANOR CT
 PROPOSED PLAN**

SCALE: 1"=20' SHEET 2 OF 2 SHEETS STA. TO STA.

F.A. RTE.	SECTION	COUNTY	TOTAL SHEETS	SHEET NO.
	22-00049-00-SW	TAZEWELL	11	9
CONTRACT NO. 89861				
ILLINOIS FED. AID PROJECT				

BRIARWOOD CT.

CL BRIARWOOD CT.

COMB. CC&G TYPE B-6.12

CLASS C PATCHES, TYPE IV, 8 INCH

30.2'

AP
AC
AF
A

COMB. CC&G TYPE B-6.12

SIDE CURB (TYP.)
INCLUDED IN COST OF
PCC SIDEWALK 4", (SPECIAL)

TAPER SIDE CURB HEIGHT

CONSTRUCTION LIMITS

SIDE CURB (TYP.)
INCLUDED IN COST OF
PCC SIDEWALK 4", (SPECIAL)

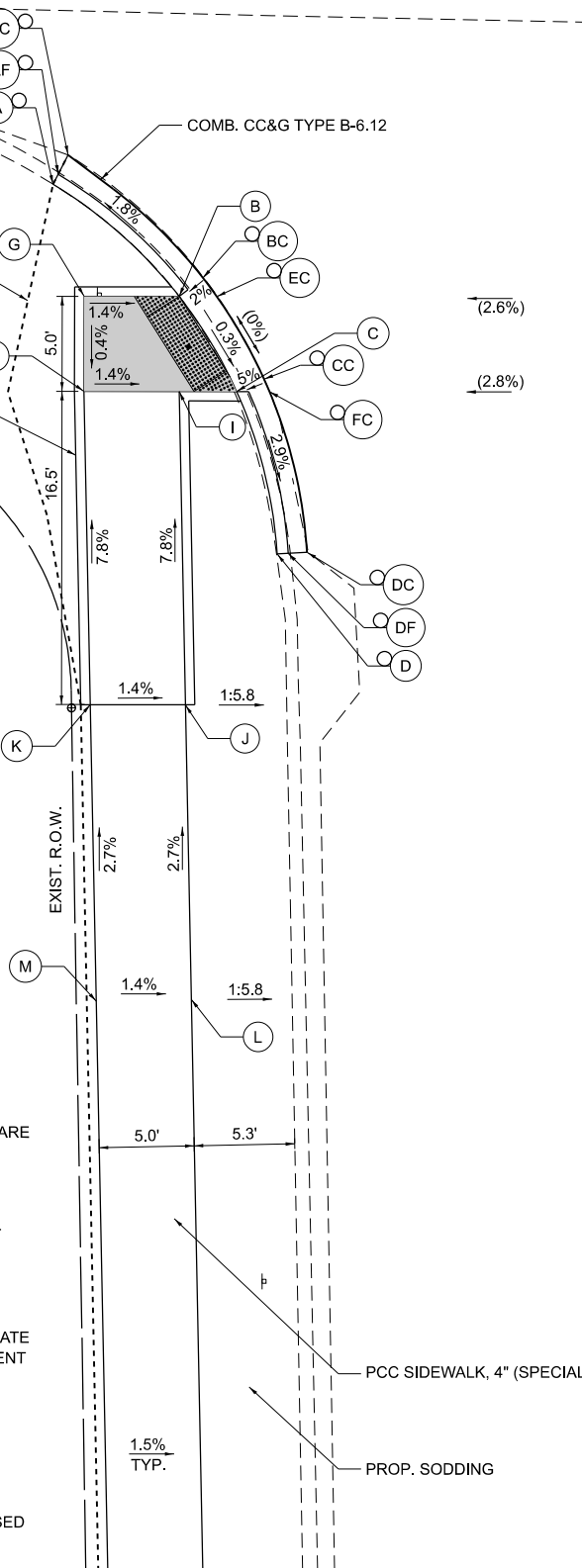
EXIST. R.O.W.

ELEANOR CT. AT BRIARWOOD CT. - WEST CORNER

POINT	STATION	OFFSET	SIDE	ELEVATION	
A	61+35.57	30.51	LT	689.68	O
B	61+29.55	23.97	LT	689.44	
C	61+24.50	21.03	LT	689.42	
D	61+15.92	19.05	LT	689.62	O
G	61+29.64	28.97	LT	689.51	
H	61+24.64	29.06	LT	689.49	
I	61+24.55	24.06	LT	689.42	
J	61+08.06	24.01	LT	690.71	
K	61+08.15	29.01	LT	690.78	
L	60+92.54	23.95	LT	691.13	
M	60+92.52	28.95	LT	691.20	O
AC	61+37.10	29.70	LT	689.27	O
AF	61+36.09	30.24	LT	689.23	O
BC	61+30.50	22.70	LT	689.42	O
CC	61+25.12	19.58	LT	689.43	O
DC	61+15.97	17.47	LT	689.33	O
DF	61+15.94	18.47	LT	689.12	O
EC	61+29.52	22.00	LT	689.43	O
FC	61+24.47	19.31	LT	689.43	O

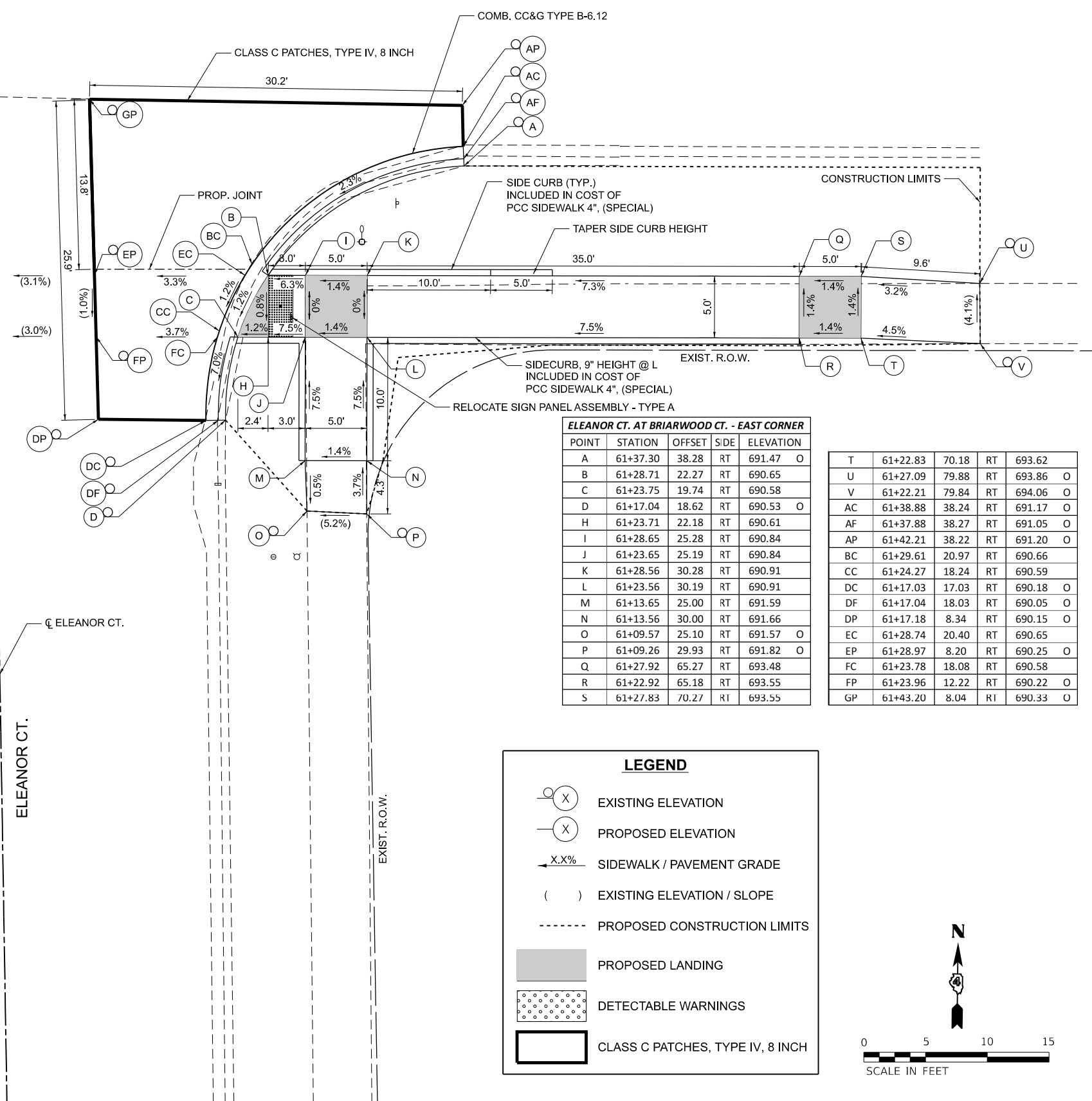
GENERAL NOTES

- ALL ELEVATIONS ARE PROPOSED UNLESS OTHERWISE NOTED AND ARE SUBJECT TO REFINEMENT DURING CONSTRUCTION.
- SIDEWALK CROSS SLOPE = 1.5% (2.0% MAX)
- UPPER LANDINGS AND LOWER LANDINGS SHALL BE 2.0% MAXIMUM CROSS SLOPE AND RUNNING SLOPE.
- MAXIMUM RAMP LONGITUDINAL SLOPE = 8.3% (1:12) BUT SHALL NOT REQUIRE RAMP LENGTH TO EXCEED 15 FT (PER PROWAG R304.2.2 AND R304.3.2).
- MAXIMUM SLOPE AROUND RADIUS AT CURB RAMP = 2%
- SIDE CURBS ARE 6" WIDTH AND SHALL BE MONOLITHIC WITH SIDEWALK UNLESS OTHERWISE NOTED. SEE PLANS FOR APPROXIMATE HEIGHT. SIDE CURB HEIGHT & EXTENTS ARE SUBJECT TO REFINEMENT DURING CONSTRUCTION.
- CROSSWALK CROSS SLOPES SHALL BE 2.0% MAX. WHEN STOP CONTROLLED AND 5.0% MAX. WITHOUT STOP CONTROL.
- CROSSWALK COUNTER SLOPES SHALL BE 5.0% MAX.
- SIDEWALK/CURB/PAVEMENT REMOVAL LIMITS ARE APPROXIMATE. CONTRACTOR SHALL ADJUST ACTUAL LIMITS AND ELEVATIONS IN THE FIELD TO ENSURE THAT ADA/PROWAG STANDARDS ARE MET.
- TRANSITION PANELS ARE DESIGNED TO TRANSITION FROM PROPOSED SIDEWALK WITH COMPLIANT CROSS SLOPE TO EXISTING SIDEWALK WITH NON-COMPLIANT CROSS SLOPE.



ELEANOR CT.

CL ELEANOR CT.



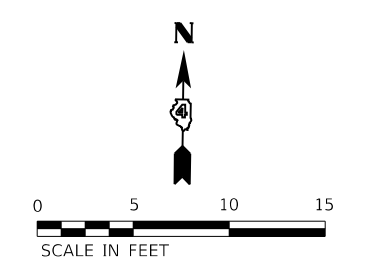
ELEANOR CT. AT BRIARWOOD CT. - EAST CORNER

POINT	STATION	OFFSET	SIDE	ELEVATION	
A	61+37.30	38.28	RT	691.47	O
B	61+28.71	22.27	RT	690.65	
C	61+23.75	19.74	RT	690.58	
D	61+17.04	18.62	RT	690.53	O
H	61+23.71	22.18	RT	690.61	
I	61+28.65	25.28	RT	690.84	
J	61+23.65	25.19	RT	690.84	
K	61+28.56	30.28	RT	690.91	
L	61+23.56	30.19	RT	690.91	
M	61+13.65	25.00	RT	691.59	
N	61+13.56	30.00	RT	691.66	
O	61+09.57	25.10	RT	691.57	O
P	61+09.26	29.93	RT	691.82	O
Q	61+27.92	65.27	RT	693.48	
R	61+22.92	65.18	RT	693.55	
S	61+27.83	70.27	RT	693.55	

T	61+22.83	70.18	RT	693.62	
U	61+27.09	79.88	RT	693.86	O
V	61+22.21	79.84	RT	694.06	O
AC	61+38.88	38.24	RT	691.17	O
AF	61+37.88	38.27	RT	691.05	O
AP	61+42.21	38.22	RT	691.20	O
BC	61+29.61	20.97	RT	690.66	
CC	61+24.27	18.24	RT	690.59	
DC	61+17.03	17.03	RT	690.18	O
DF	61+17.04	18.03	RT	690.05	O
DP	61+17.18	8.34	RT	690.15	O
EC	61+28.74	20.40	RT	690.65	
EP	61+28.97	8.20	RT	690.25	O
FC	61+23.78	18.08	RT	690.58	
FP	61+23.96	12.22	RT	690.22	O
GP	61+43.20	8.04	RT	690.33	O

LEGEND

- EXISTING ELEVATION
- PROPOSED ELEVATION
- SIDEWALK / PAVEMENT GRADE
- EXISTING ELEVATION / SLOPE
- PROPOSED CONSTRUCTION LIMITS
- PROPOSED LANDING
- DETECTABLE WARNINGS
- CLASS C PATCHES, TYPE IV, 8 INCH



MODEL: Eleanor Briarwood ADA.dwg (Sheet)
FILE NAME: E:\Projects\350_000_23_SRS\Phase 1 E:\Drawings\Sheet\EleanorBRTS_sht_ADA_Detail.dwg



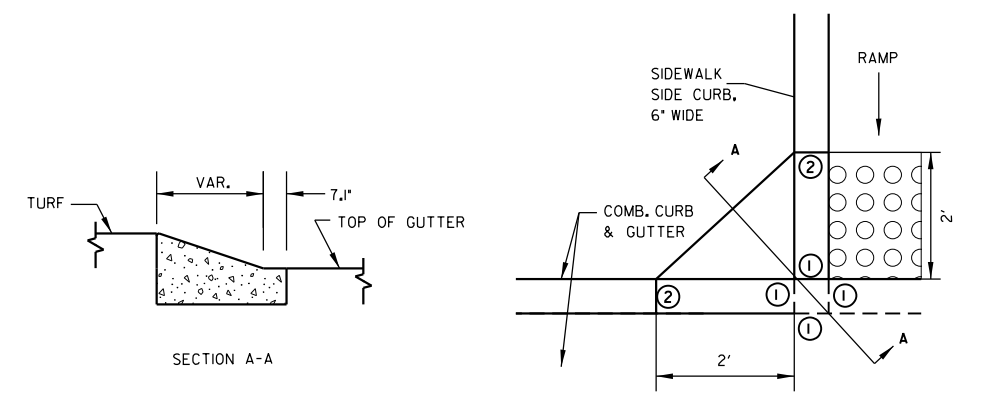
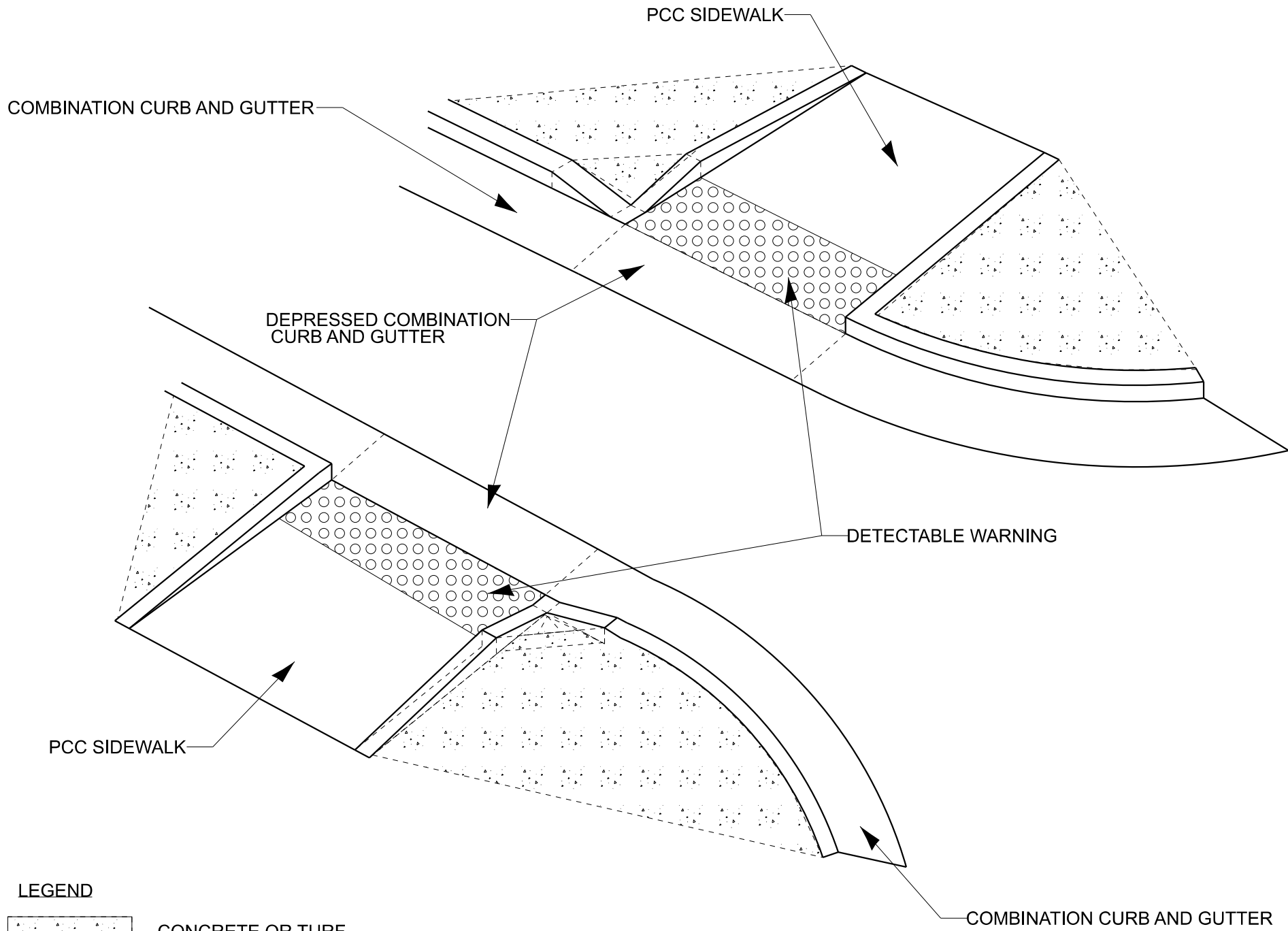
USER NAME = jessica	DESIGNED - MHS	REVISED - 4/29/2024
	DRAWN - MHS	REVISED -
PLOT SCALE = 0.16666633' / in.	CHECKED - JAS	REVISED -
PLOT DATE = 4/29/2024	DATE - 3/6/2024	REVISED -

STATE OF ILLINOIS
DEPARTMENT OF TRANSPORTATION

GROVELAND ST AND ELEANOR CT
ADA DETAIL SHEET

SCALE: 1"=5' SHEET 1 OF 1 SHEETS STA. ___+___ TO STA. ___+___

F.A.P. RTE.	SECTION	COUNTY	TOTAL SHEETS	SHEET NO.
	22-00049-00-SW	TAZEWELL	11	10
CONTRACT NO. 89861				
ILLINOIS FED. AID PROJECT				

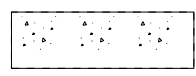
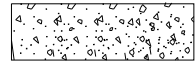


NOTE: APPROACH NOSE CAN EITHER BE P.C.C. SIDEWALK, 4" OR GRADED TURF.

APPROACH NOSE DETAIL

- ① 0" CURB HEIGHT.
- ② FULL CURB HEIGHT.

LEGEND

-  CONCRETE OR TURF
-  SIDE CURB

NOTES:

IF CONTRACTOR OR LOCAL AGENCY REQUESTS A VARIATION OF THE BEAVER TAIL, APPROVAL MUST BE MADE BY BOTH RESIDENT ENGINEER AND DISTRICT ADA COORDINATOR.

APPROACH NOSE CAN EITHER BE CONCRETE OR GRADED TURF. IF CONCRETE IS USED, IT SHALL BE PAID FOR AS P.C.C SIDEWALK.

ALL DIMENSIONS ARE IN INCHES (MILLIMETERS) UNLESS OTHERWISE NOTED.

MODEL: Default; FILE NAME: P:\Projects\350_Curve_Coat\350_00323_SRF5 Phase 1 & II\Drawings\Sheets\Beaver Tail Detail.dgn

USER NAME = jessica	DESIGNED - MHS	REVISED - 4/29/2024
DRAWN - MHS	REVISIONS -	
PLOT SCALE = 5000.0000' / in.	CHECKED - JAS	REVISIONS -
PLOT DATE = 4/29/2024	DATE - 3/15/2024	REVISIONS -

**STATE OF ILLINOIS
DEPARTMENT OF TRANSPORTATION**

SIDEWALK SIDE CURB DETAIL
NOT TO SCALE
SCALE: SHEET OF SHEETS STA. TO STA.

F.A. RTE.	SECTION	COUNTY	TOTAL SHEETS	SHEET NO.
	22-00049-00-SW	TAZEWELL	11	11
CONTRACT NO. 89861			ILLINOIS FED. AID PROJECT	