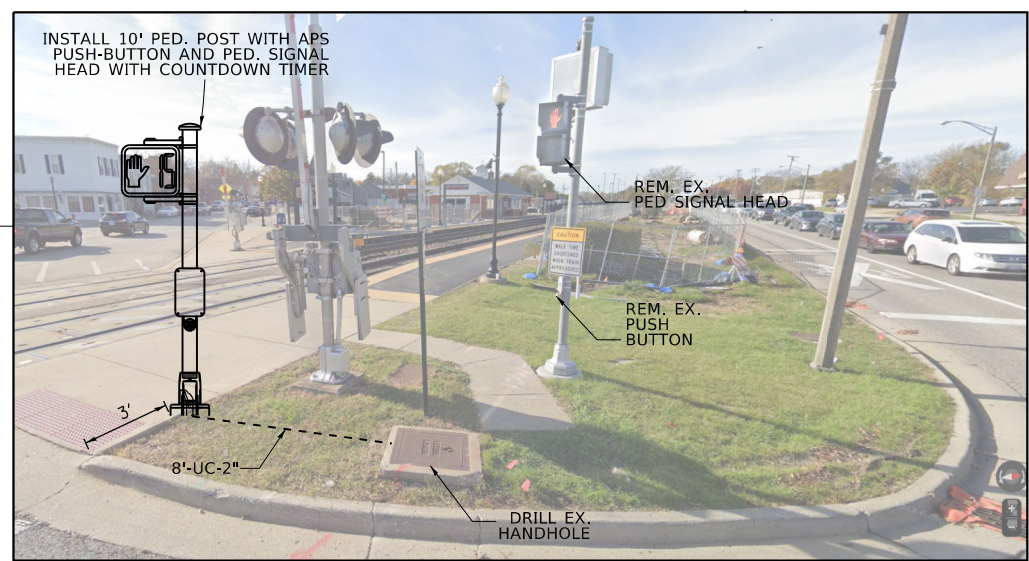
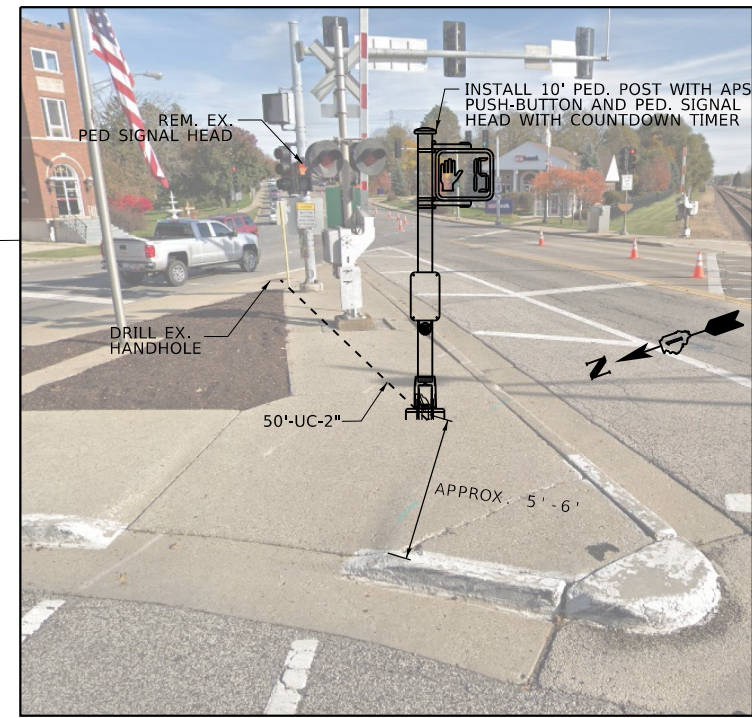
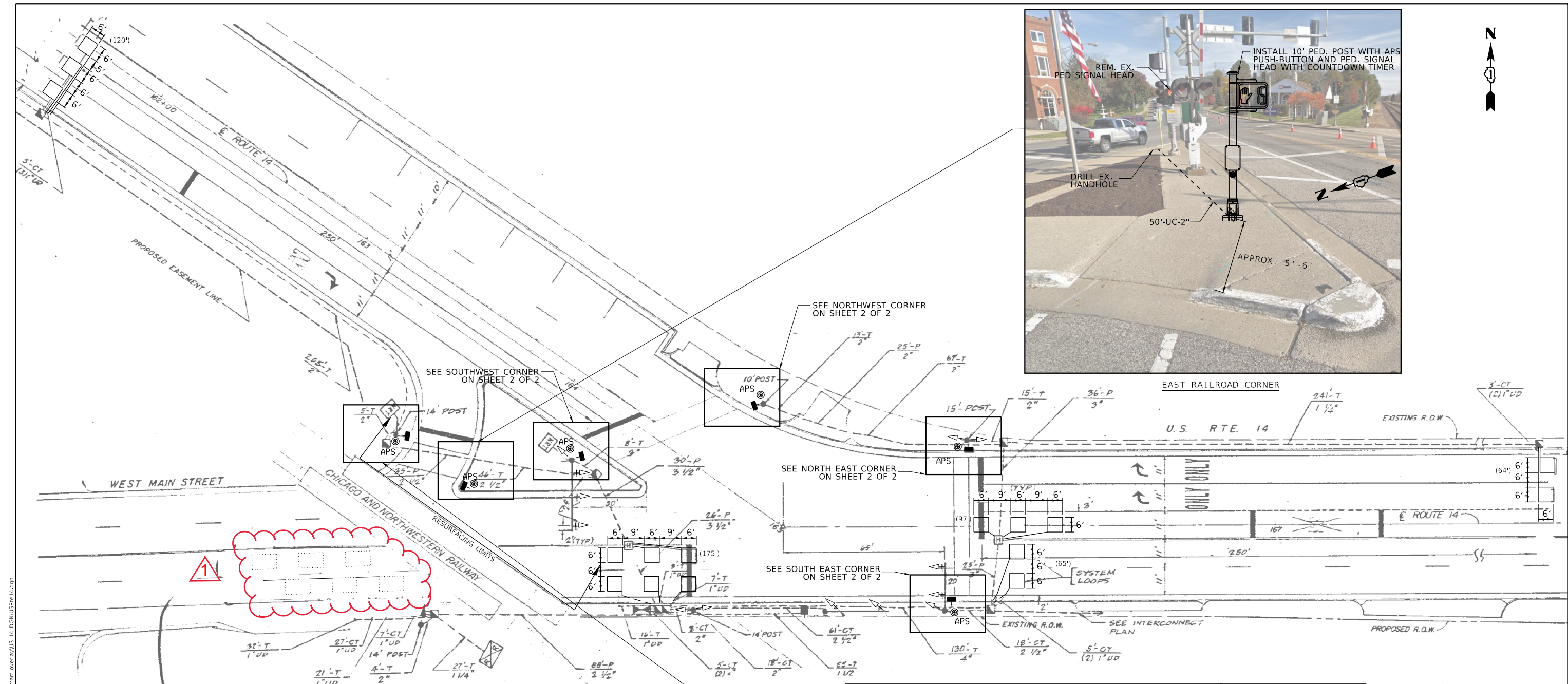


SUMMARY OF QUANTITIES			TOTAL QUANTITIES URBAN	CONSTRUCTION TYPE CODE						CODE NO	SUMMARY OF QUANTITIES			TOTAL QUANTITIES URBAN	CONSTRUCTION TYPE CODE											
CODE NO	ITEM	UNIT		80% FED 20% STATE MCHENRY US-14 0005	100% STATE MCHENRY US-14 0005	80% FED 20% STATE MCHENRY PEDESTRIAN SIGNAL 0021	80% FED 20% STATE KANE IL-31 0004				CODE NO	ITEM	UNIT		80% FED 20% STATE MCHENRY US-14 0005	100% STATE MCHENRY US-14 0005	80% FED 20% STATE MCHENRY PEDESTRIAN SIGNAL 0021	80% FED 20% STATE KANE IL-31 0004								
78000500	THERMOPLASTIC PAVEMENT MARKING - LINE	FOOT	200	200						*	87301305	ELECTRIC CABLE IN CONDUIT, LEAD-IN, NO.	FOOT	2111			2111									
	8"											14 1 PAIR														
78000600	THERMOPLASTIC PAVEMENT MARKING - LINE	FOOT	1419	1300			119			*	87301900	ELECTRIC CABLE IN CONDUIT, EQUIPMENT	FOOT	2549			2549									
	12"											GROUNDING CONDUCTOR, NO. 6 1C														
78000650	THERMOPLASTIC PAVEMENT MARKING - LINE	FOOT	550	550						*	87900200	DRILL EXISTING HANDHOLE	EACH	9			9									
	24"																									
										*	88102717	PEDESTRIAN SIGNAL HEAD, LED, 1-FACE,	EACH	6			6									
												BRACKET MOUNTED WITH COUNTDOWN TIMER														
78100100	RAISED REFLECTIVE PAVEMENT MARKER	EACH	841	841							88500100	INDUCTIVE LOOP DETECTOR LOOP	EACH	4			4									
										*	88600100	DETECTOR LOOP, TYPE I	FOOT	1277			1277									
78300200	RAISED REFLECTIVE PAVEMENT MARKER	EACH	841	841						*	89500200	RELOCATE EXISTING PEDESTRIAN SIGNAL	EACH	3			3									
	REMOVAL											HEAD														
78300202	PAVEMENT MARKING REMOVAL - WATER	SO FT	650				650			*	89502200	MODIFY EXISTING CONTROLLER	EACH	3			3									
	BLASTING																									
										*	89502375	REMOVE EXISTING TRAFFIC SIGNAL	EACH	3			3									
												EQUIPMENT														
81028200	UNDERGROUND CONDUIT, GALVANIZED STEEL,	FOOT	143			143				*	89502376	REBUILD EXISTING HANDHOLE	EACH	6			6									
	2" DIA.										X0320050	CONSTRUCTION LAYOUT (SPECIAL)	L SUM	1	1											
85000200	MAINTENANCE OF EXISTING TRAFFIC SIGNAL	EACH	2			2				*	X1400367	PEDESTRIAN SIGNAL POST, 10 FT.	EACH	6			6									
	INSTALLATION																									
87301215	ELECTRIC CABLE IN CONDUIT, SIGNAL NO.	FOOT	1489			1489				*	X1400378	PEDESTRIAN SIGNAL POST, 5 FT.	EACH	3			3									
	14 2C																									
										*	X1400450	REBUILD EXISTING HEAVY-DUTY HANDHOLE	EACH	3	3											
87301225	ELECTRIC CABLE IN CONDUIT, SIGNAL NO.	FOOT	1060			1060																				
	14 3C										X4060995	TEMPORARY RAMP (SPECIAL)	SO YD	372	372											
FILE NAME =			USER NAME = mohammed.hamwi		DESIGNED -		REVISED -		STATE OF ILLINOIS DEPARTMENT OF TRANSPORTATION			SUMMARY OF QUANTITIES US 14 AND IL 31				F.A. RTE.		SECTION		COUNTY	TOTAL SHEETS	SHEET NO.				
pw:\N\dot-pw\entirey.com\PW\DOT\Documents\UDOT - Office\District\N\Projects\DI21822\CAD\data\Design\DI21822-str-5000.DWG			DRAWN -		REVISED -		VAR.									FAP 0305 22 RS		VARIOUS	71	6						
PLOT SCALE = 100.0000 ' / 1in.			CHECKED -		REVISED -		CONTRACT NO. 62R97																			
PLOT DATE = 5/10/2024			DATE -		REVISED -		SCALE: SHEET NO. OF SHEETS STA. TO STA.									FED. ROAD DIST. NO. 1 ILLINOIS FED. AID PROJECT										
																				* = SPECIALTY ITEMS △ = NON-PARTICIPATING WORK (100% STATE)						

SUMMARY OF QUANTITIES				CONSTRUCTION TYPE CODE															
CODE NO	ITEM	UNIT	TOTAL QUANTITIES URBAN	80% FED 20% STATE MCHENRY US-14 0005	100% STATE MCHENRY US-14 0005	80% FED 20% STATE MCHENRY PEDESTRIAN SIGNAL 0021	80% FED 20% STATE KANE IL-31 0004												
X4400501	COMBINATION CURB AND GUTTER REMOVAL AND	FOOT	602	602															
	REPLACEMENT LESS THAN OR EQUAL TO 10																		
	FEET																		
X4400503	COMBINATION CURB AND GUTTER REMOVAL AND	FOOT	2235	2235															
	REPLACEMENT GREATER THAN 10 FEET																		
X4420815	CLASS D PATCHES, TYPE II, 14 INCH	50 YD	15				15												
	(SPECIAL)																		
X5537800	STORM SEWERS TO BE CLEANED 12"	FOOT	850		850														
X6030310	FRAMES AND LIDS TO BE ADJUSTED	EACH	33	33															
	(SPECIAL)																		
X6700407	ENGINEER'S FIELD OFFICE, TYPE A (D1)	CAL MO	12	11			1												
X7010216	TRAFFIC CONTROL AND PROTECTION,	L SUM	1				1												
	(SPECIAL)																		
X8140238	REBUILD EXISTING DOUBLE HANDHOLE	EACH	1				1												
X7830050	RAISED REFLECTIVE PAVEMENT MARKER,	EACH	30				30												
	REFLECTOR REMOVAL																		
* X7830052	RAISED REFLECTIVE PAVEMENT MARKER,	EACH	30				30												
	REFLECTOR REPLACEMENT																		
* X8760200	ACCESSIBLE PEDESTRIAN SIGNALS	EACH	18			18													
* X8780012	CONCRETE FOUNDATION, TYPE A 12-INCH	FOOT	36			36													
	DIAMETER																		
FILE NAME =			USER NAME = mohammad.hamwi	DESIGNED -	REVISED -	STATE OF ILLINOIS DEPARTMENT OF TRANSPORTATION				SUMMARY OF QUANTITIES US 14 AND IL 31				F.A. RTE.	SECTION		COUNTY	TOTAL SHEETS	SHEET NO.
pw:\V\dot-pw\entirey.com\PI\DOT\Documents\1\DOT - Office\District\N\Projects\DI21822\CAD\data\Design\DI21822-str-5000.DRAWN				REVISED -	VAR.									FAP 0305 22 RS		VARIOUS	71	7	
				CHECKED -	CONTRACT NO. 62R97														
				REVISED -															
			PLOT SCALE = 100.0000 ' / 1in	DATE -	REVISED -	SCALE:				SHEET NO.	OF	SHEETS	STA.	TO STA.		FED. ROAD DIST. NO. 1 ILLINOIS FED. AID PROJECT			
			PLOT DATE = 5/10/2024											* = SPECIALTY ITEMS △ = NON-PARTICIPATING WORK (100% STATE)					

MODEL Default
FILE Name: 330100Design\JUL03 InHouse Traffic\230710-622897 - US Rte 14 from Borden Ave to Spring Beach Way - Smart overlay\US 14 DGN\USRte14.dgn



NOTES:

1. EACH DETECTOR LOOP SHALL HAVE ITS OWN 1" COILABLE NON-METALLIC CONDUIT BETWEEN THE EDGE OF PAVEMENT AND THE ADJACENT HANDHOLE AS SHOWN ON THE PLANS AND AS STATED IN THE TRAFFIC SIGNAL SPECIFICATIONS.
2. CONTRACTOR SHALL CONFIRM THE FINAL LOCATION OF THE PEDESTRIAN EQUIPMENT BEFORE INSTALLATION WITH THE TRAFFIC SIGNAL ENGINEER.
3. APS SHALL BE PLACE PARALLEL TO THE CORRESPONDING CROSSWALK.
4. THIS PLAN IS FOR THE REMOVAL OF PUSH BUTTONS, INSTALLATION OF APS PUSH BUTTONS, AND REPLACEMENT OF LOOP DETECTORS WITHIN THE RESURFACING LIMITS AS SHOWN.
5. WORK SHALL MEET THE REQUIREMENTS OF THE SPECIAL PROVISIONS, DETECTOR LOOP REPLACEMENT AND/OR INSTALLATION (ROADWAY GRINDING, RESURFACING, AND PATCHING OPERATIONS).
6. ALL PUSH BUTTONS SHALL BE APS

REMOVAL AND RELOCATION NOTES:

THE FOLLOWING ITEMS SHALL BE REMOVED BY THE CONTRACTOR AND SHALL BE DISPOSED OF BY THEM OUTSIDE THE RIGHT-OF-WAY AT THEIR EXPENSE. THE SALVAGE VALUE OF THE REMOVED EQUIPMENT SHALL BE REFLECTED IN THE CONTRACT BID PRICE.

- | | | |
|---|------|------------------------|
| 6 | EACH | PEDESTRIAN SIGNAL HEAD |
| 5 | EACH | PEDESTRIAN PUSH-BUTTON |

STATE OF ILLINOIS
DEPARTMENT OF TRANSPORTATION

TRAFFIC SIGNAL MODERNIZATION PLAN (SHEET 1 OF 2)
U.S. ROUTE 14 AND W MAIN STREET

SCALE: SHEET OF SHEETS STA. TO STA.

REVISED SHEET 7/3/2024

TS 7245
ECON 149

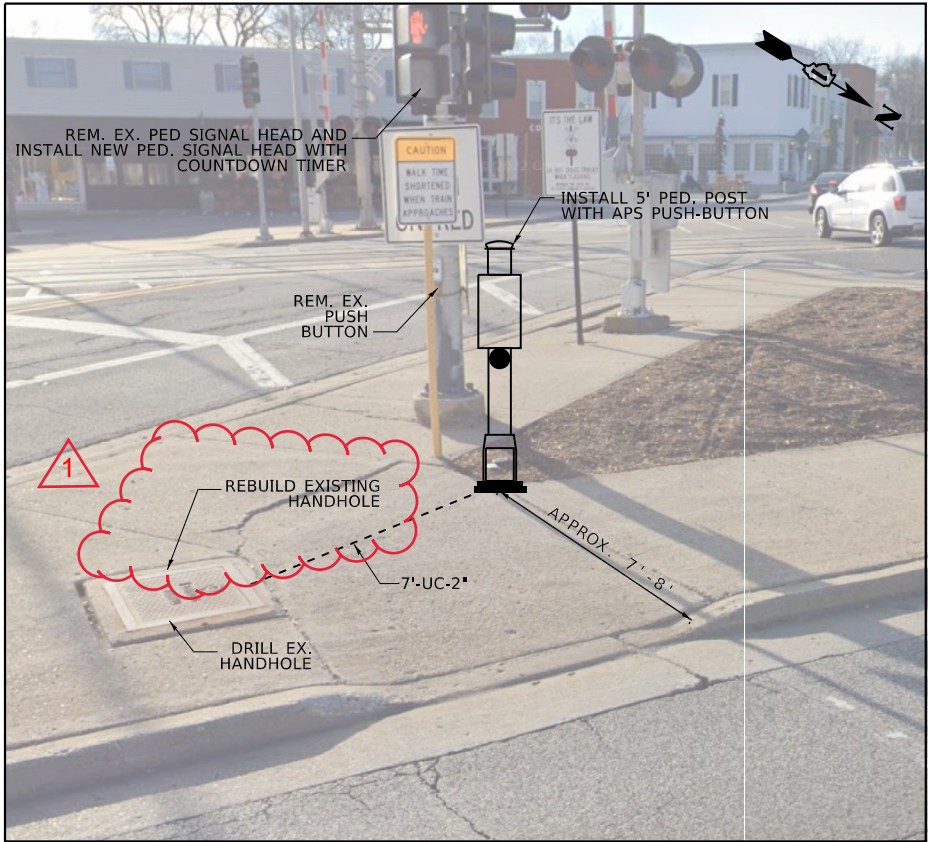
F.A. RTE.	SECTION	COUNTY	TOTAL SHEETS	SHEET NO.
305	FAP 0305 22 RS	MCHENRY	71	13
CONTRACT NO. 62R97				
ILLINOIS FED. AID PROJECT				



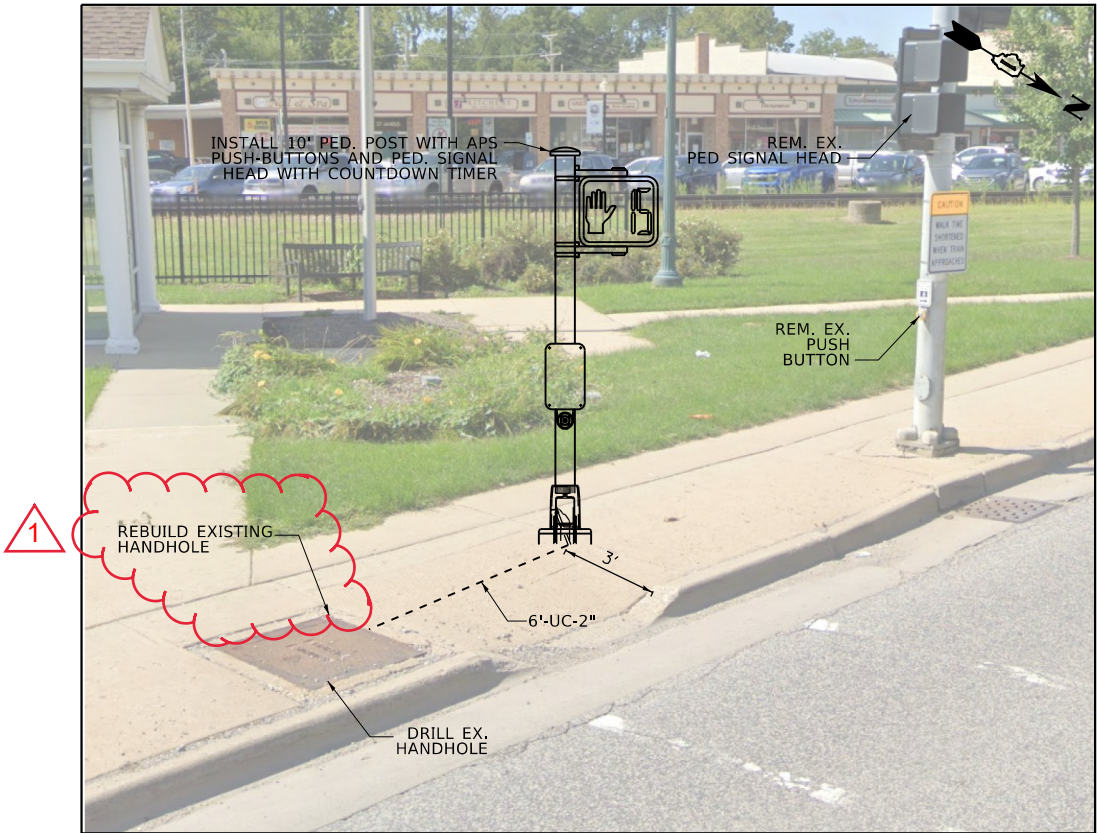
NORTHWEST CORNER



NORTHEAST CORNER





SOUTHWEST CORNER



SOUTHEAST CORNER


MODEL Default
FILE Name: 33010Design\DL103 InHouse Traffic\2024\10-622897 - US Rte 14 from Borden Ave to Spring Beach Way - Smart overlay\US 14 DGN\USRte14.dgn

USER NAME	= JASON.RODRIGUEZ	DESIGNED	JL	REVISED	-  J.LARSON 6/21/2024
		DRAWN	JL	REVISED	-  J.LARSON 6/21/2024
PLOT SCALE	= 40,0000 ' / in.	CHECKED	-	REVISED	-
PLOT DATE	= 6/24/2024	DATE	4/5/2024	REVISED	-

STATE OF ILLINOIS
DEPARTMENT OF TRANSPORTATION

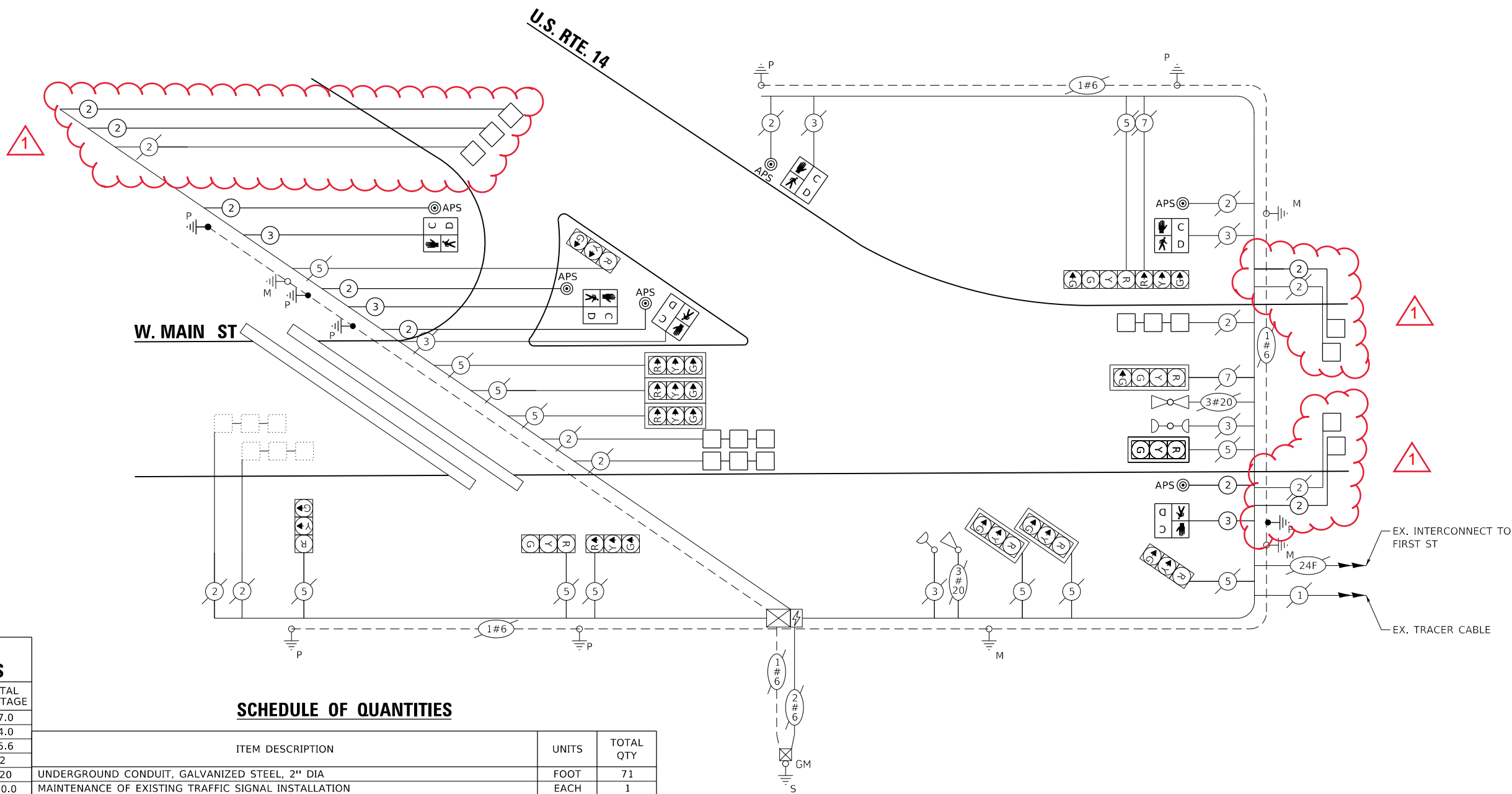
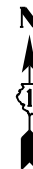
TRAFFIC SIGNAL MODERNIZATION PLAN (SHEET 2 OF 2)
U.S. ROUTE 14 AND W MAIN STREET

SCALE: SHEET OF SHEETS STA. TO STA.

 REVISED SHEET 7/3/2024

TS 7245
ECON 149

F.A. RTE.	SECTION	COUNTY	TOTAL SHEETS	SHEET NO.
305	FAP 0305 22 RS	MCHENRY	71	14
CONTRACT NO. 62R97				
ILLINOIS FED. AID PROJECT				



CABLE PLAN

TRAFFIC SIGNAL
ELECTRICAL SERVICE REQUIREMENTS

TYPE	NO. OF LAMPS	LED WATTAGE	% OPERATION	TOTAL WATTAGE
SIGNAL (RED)	14	11	50	77.0
(YELLOW)	14	20	5	14.0
(GREEN)	14	12	45	75.6
PERMISSIVE ARROW	2	10	10	2
PED. SIGNAL	6	20	100	120
CONTROLLER	1	100	100	100.0
UPS	1	25	100	25.0
VIDEO SYSTEM	-	150	100	-
BLANK-OUT SIGN	-	25	5	-
FLASHER	-	-	50	-
STREET NAME SIGN	-	120	50	-
LUMINAIRE	-	-	-	-
TOTAL =				413.6

ENERGY COSTS TO:

VILLAGE OF CARY

755 GEORGETOWN DR
CARY, IL. 60013

ENERGY SUPPLY: CONTACT: CASSIE EVANS
PHONE: 773-241-0741
COMPANY: COMMONWEALTH EDISON
ACCOUNT NUMBER: 03631-71304

SCHEDULE OF QUANTITIES

ITEM DESCRIPTION	UNITS	TOTAL QTY
UNDERGROUND CONDUIT, GALVANIZED STEEL, 2" DIA	FOOT	71
MAINTENANCE OF EXISTING TRAFFIC SIGNAL INSTALLATION	EACH	1
ELECTRIC CABLE IN CONDUIT, SIGNAL NO. 14 2C	FOOT	610
ELECTRIC CABLE IN CONDUIT, SIGNAL NO. 14 3C	FOOT	523
ELECTRIC CABLE IN CONDUIT, LEAD-IN, NO. 14 1 PAIR	FOOT	1576
ELECTRIC CABLE IN CONDUIT, EQUIPMENT GROUNDING CONDUCTOR, NO. 6 1C	FOOT	1133
DRILL EXISTING HANDHOLE	EACH	4
PEDESTRIAN SIGNAL HEAD, LED, 1-FACE, BRACKET MOUNTED WITH COUNTDOWN TIMER	EACH	6
INDUCTIVE LOOP DETECTOR	EACH	4
DETECTOR LOOP TYPE 1	FOOT	389
MODIFY EXISTING CONTROLLER	EACH	1
REMOVE EXISTING TRAFFIC SIGNAL EQUIPMENT	EACH	1
REBUILD EXISTING HANDHOLE	EACH	2
PEDESTRIAN SIGNAL POST, 10 FT	EACH	3
PEDESTRIAN SIGNAL POST, 5 FT	EACH	1
ACCESSIBLE PEDESTRIAN SIGNALS	EACH	6
CONCRETE FOUNDATION TYPE A 12-INCH DIAMETER	FOOT	16
RE-OPTIMIZE TRAFFIC SIGNAL SYSTEM LEVEL 1	EACH	1

STATE OF ILLINOIS
DEPARTMENT OF TRANSPORTATION

CABLE PLAN AND SCHEDULE OF QUANTITIES
U.S. ROUTE 14 AND W MAIN STREET

SCALE: SHEET OF SHEETS STA. TO STA.

1 REVISED SHEET 7/3/2024

TS 7245

ECON 149

F.A. RTE.	SECTION	COUNTY	TOTAL SHEETS	SHEET NO.
305	FAP 0305 22 RS	MCHENRY	71	15
CONTRACT NO. 62R97				
ILLINOIS FED. AID PROJECT				

MODEL: Default
FILE: \\nortel\330\pdesign\JUL03 Inhouse Traffic\230710-62907 - US Rte 14 from Borden Ave to Sarpio Beach Way - Smart overlay\US 14 DGM\USRte14.dgn

SEQUENCE OF OPERATION

MOVEMENT	1	2A	2B	3	4A	4B	5A	5B	6A	6B	7	8A	8B	9A	9B	10	11	12	F
PHASE	2 + 5			2 + 6						7						8			L
INTERVAL	1	2A	2B	3	4A	4B	5A	5B	6A	6B	7	8A	8B	9A	9B	10	11	12	A
CHANGE TO		2+5		2+5			7		8			2+5		2+6			2+5	2+6	H
U.S. RTE. 14 RIGHT TURN SIGNALS	W/B	G	G	G	G	G	Y	R	Y	R	R	R	R	R	R	R	R	R	R
U.S. RTE. 14 THROUGH SIGNALS	W/B	G	Y	R	R	R	R	R	R	R	R	R	R	R	R	R	R	R	R
U.S. RTE. 14 LEFT TURN SIGNALS	E/B	R	R	R	G	Y	R	Y	R	Y	R	R	R	R	R	R	R	R	R
U.S. RTE. 14 RIGHT TURN SIGNALS	E/B	R	R	R	G	Y	R	G	G	Y	R	G	Y	R	G	G	R	R	R
WEST MAIN ST. NEAR RIGHT AND FAR RIGHT SIGNALS	E/B	R	R	R	R	R	R	R	R	R	G	Y	R	Y	R	R	R	R	R
WEST MAIN ST. END MAST ARM AND FAR LEFT SIGNALS	E/B	R	R	R	R	R	R	R	R	R	G	Y	R	Y	R	R	R	R	R
PEDESTRIAN SIGNALS CROSSING WEST LEG OF U.S. RTE. 14		DW	DW	DW	DW	DW	DW	DW	DW	DW	DW	DW	DW	DW	DW	DW	DW	DW	D
PEDESTRIAN SIGNALS CROSSING EAST LEG OF U.S. RTE. 14		DW	DW	DW	DW	DW	DW	DW	DW	DW	DW	DW	DW	DW	DW	DW	DW	DW	K

O.L.A. = 6 + 7
PHASE 2 + 6 SHALL BE PLACED ON RECALL.

- * TO APPEAR ONLY UPON PUSHBUTTON ACTUATION
- ** FLASHING "DON'T WALK" IS TO TERMINATE AT THE COMPLETION OF THE PEDESTRIAN INTERVAL CLEARANCE.
- W = "WALK"
- FL = FLASHING "DON'T WALK"
- DW = "DON'T WALK"

FOR INFORMATION PURPOSES ONLY

RAILROAD PREEMPTION SEQUENCE OF OPERATION

FROM NORMAL SEQUENCE OF OPERATION INTERVAL NUMBER	1	3	7	10															
FROM EMERGENCY VEHICLE PREEMPTION SEQUENCE INTERVAL NUMBER					2	3	4												
RAILROAD PREEMPTION INTERVAL	1A	1B	1C	1D	1E	1F	1G	1H	1J	1K	1L	1M	1N	2	3	4	5	6	7
CHANGE TO	1B	2	1D	2	1F	2	2	1J	2	1L	2	1N	2	3	4	5	6	7	RESUME NORMAL PHASE 7
U.S. RTE. 14 RIGHT TURN SIGNALS	W/B	Y	R	Y	R	R	R	Y	R	R	R	Y	R	R	R	R	R	G	Y
U.S. RTE. 14 THROUGH SIGNALS	W/B	Y	R	R	R	R	R	Y	R	R	R	R	R	R	R	R	R	R	R
U.S. RTE. 14 LEFT TURN SIGNALS	E/B	R	R	Y	R	R	R	R	R	R	R	Y	R	R	R	R	R	G	Y
U.S. RTE. 14 RIGHT TURN SIGNALS	E/B	R	R	Y	R	Y	R	R	R	Y	R	Y	R	R	R	R	R	R	R
WEST MAIN ST. NEAR RIGHT AND FAR RIGHT SIGNALS	E/B	R	R	R	R	G	G	R	R	R	G	G	R	R	G	Y	R	R	R
WEST MAIN ST. END MAST ARM AND FAR LEFT SIGNALS	E/B	R	R	R	R	G	G	R	R	R	G	G	R	R	G	Y	R	R	R
PEDESTRIAN SIGNALS CROSSING WEST LEG OF U.S. RTE. 14		DW	DW	DW	DW	DW	FL DW	DW	DW	DW	DW	DW	DW	DW	DW	DW	DW	DW	DW
PEDESTRIAN SIGNALS CROSSING EAST LEG OF U.S. RTE. 14		DW	DW	DW	DW	DW	FL DW	DW	DW	DW	DW	DW	DW	DW	DW	DW	DW	DW	DW
INTERNALLY ILLUMINATED SIGNS	NRT	NRT	NRT	NRT	NRT	NRT	NRT	NRT	NRT	NRT	NRT	NRT	NRT	NRT	NRT	NRT	NRT	NRT	NRT

NRT = "NO RIGHT TURN" OR 

EMERGENCY VEHICLE PREEMPTION SEQUENCE OF OPERATION

FROM NORMAL INTERVAL	1	1	1	3	3	3	7	7	7	10	10	10							
EMERGENCY VEHICLE PREEMPTION SEQUENCE INTERVAL	1A	1B	1C	1D	1E	1F	1G	1H	1J	1K	1L	1M	1N	1P	1Q	1R	1S	1T	1U
CHANGE TO	2	1C	3	1E	4	1G	2	1J	3	4	1M	2	3	1O	4	1S	2	1U	3
U.S. RTE. 14 RIGHT TURN SIGNALS	W/B	G	Y	R	G	G	G	Y	R	G	R	R	R	R	R	R	R	R	R
U.S. RTE. 14 THROUGH SIGNALS	W/B	G	Y	R	Y	R	R	R	R	R	R	R	R	R	R	R	R	R	R
U.S. RTE. 14 LEFT TURN SIGNALS	E/B	R	R	R	R	Y	R	Y	R	G	R	R	R	R	R	R	R	R	R
U.S. RTE. 14 RIGHT TURN SIGNALS	E/B	R	R	R	R	Y	R	G	G	G	Y	R	G	G	G	R	R	R	R
WEST MAIN ST. NEAR RIGHT AND FAR RIGHT SIGNALS	E/B	R	R	R	R	R	R	R	R	R	Y	R	G	Y	R	R	R	R	R
WEST MAIN ST. END MAST ARM AND FAR LEFT SIGNALS	E/B	R	R	R	R	R	R	R	R	R	Y	R	G	Y	H	R	R	R	R
PEDESTRIAN SIGNALS CROSSING WEST LEG OF U.S. RTE. 14		DW	DW	DW	DW	DW	DW	DW	DW	DW	DW	DW	DW	DW	DW	FL DW	DW	FL DW	DW
PEDESTRIAN SIGNALS CROSSING EAST LEG OF U.S. RTE. 14		DW	DW	DW	DW	DW	DW	DW	DW	DW	DW	DW	DW	DW	DW	FL DW	DW	FL DW	DW

◇ EMERGENCY VEHICLE SEQUENCE SHALL PROVIDE THE PROPER CLEARANCE INTERVAL TO RESUME THE NORMAL SEQUENCE OF OPERATION OR PROPER CLEARANCE INTERVAL TO DISPLAY A DIFFERENT EMERGENCY INTERVAL AFTER EMERGENCY VEHICLE 2, 3 OR 4 IS TERMINATED.

MODEL: Default
FILE NAME: S:\WP\Design\DL03 Inhouse Traffic\62997\10-62997 - US Rte 14 from Borden Ave to Spring Beach Way - Smart Overlay\US 14 DCL05Rte14.dgn

STATE OF ILLINOIS
DEPARTMENT OF TRANSPORTATION

PHASE DESIGNATION DIAGRAM, RAILROAD PREEMPTION
SEQUENCE OF OPERATION, AND EMERGENCY VEHICLE PREEMPTION
U.S. ROUTE 14 AND W MAIN STREET

SCALE: SHEET OF SHEETS STA. TO STA.

F.A. RTE. 305	SECTION FAP 0305 22 RS	COUNTY MCHENRY	TOTAL SHEETS 71	SHEET NO. 16
CONTRACT NO. 62R97				
ILLINOIS FED. AID PROJECT				

TS 7245
ECON 149

1 REVISED ENTIRE SHEET 7/3/2024

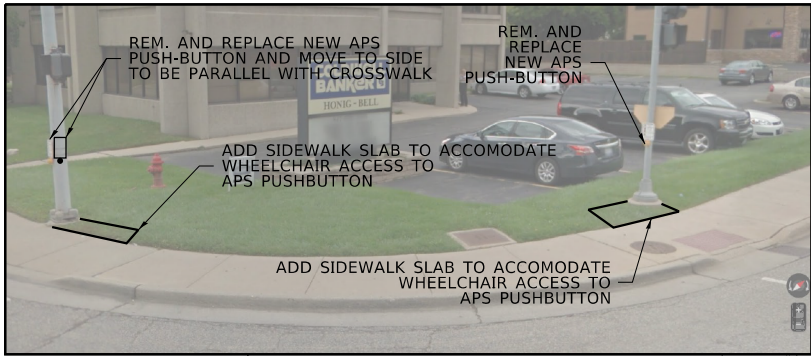
NOTES:

- 1. EACH DETECTOR LOOP SHALL HAVE ITS OWN 1" COILABLE NON-METALLIC CONDUIT BETWEEN THE EDGE OF PAVEMENT AND THE ADJACENT HANDHOLE AS SHOWN ON THE PLANS AND AS STATED IN THE TRAFFIC SIGNAL SPECIFICATIONS.
- 2. CONTRACTOR SHALL CONFIRM THE FINAL LOCATION OF THE PEDESTRIAN EQUIPMENT BEFORE INSTALLATION WITH THE TRAFFIC SIGNAL ENGINEER.
- 3. APS SHALL BE PLACE PARALLEL TO THE CORRESPONDING CROSSWALK.
- 4. THIS PLAN IS FOR THE REMOVAL OF PUSH BUTTONS, INSTALLATION OF APS PUSH BUTTONS, AND REPLACEMENT OF LOOP DETECTORS WITHIN THE RESURFACING LIMITS AS SHOWN.
- 5. WORK SHALL MEET THE REQUIREMENTS OF THE SPECIAL PROVISIONS, DETECTOR LOOP REPLACEMENT AND/OR INSTALLATION (ROADWAY GRINDING, RESURFACING, AND PATCHING OPERATIONS).
- 6. ALL PUSH BUTTONS SHALL BE APS

REMOVAL AND RELOCATION NOTES:

THE FOLLOWING ITEMS SHALL BE REMOVED BY THE CONTRACTOR AND SHALL BE DISPOSED OF BY THEM OUTSIDE THE RIGHT-OF-WAY AT THEIR EXPENSE. THE SALVAGE VALUE OF THE REMOVED EQUIPMENT SHALL BE REFLECTED IN THE CONTRACT BID PRICE.

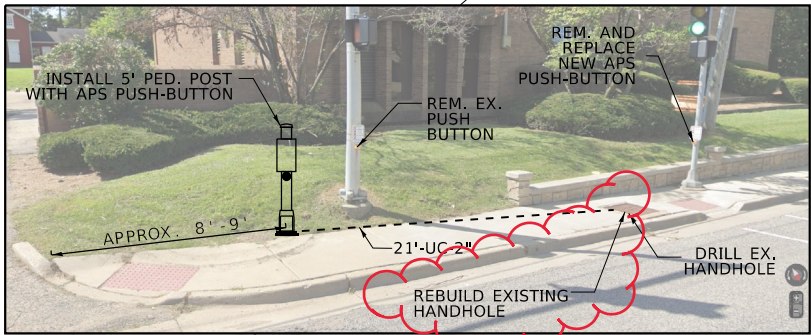
- 1 EACH PEDESTRIAN SIGNAL HEAD (RELOCATED)
- 8 EACH PEDESTRIAN PUSH-BUTTON



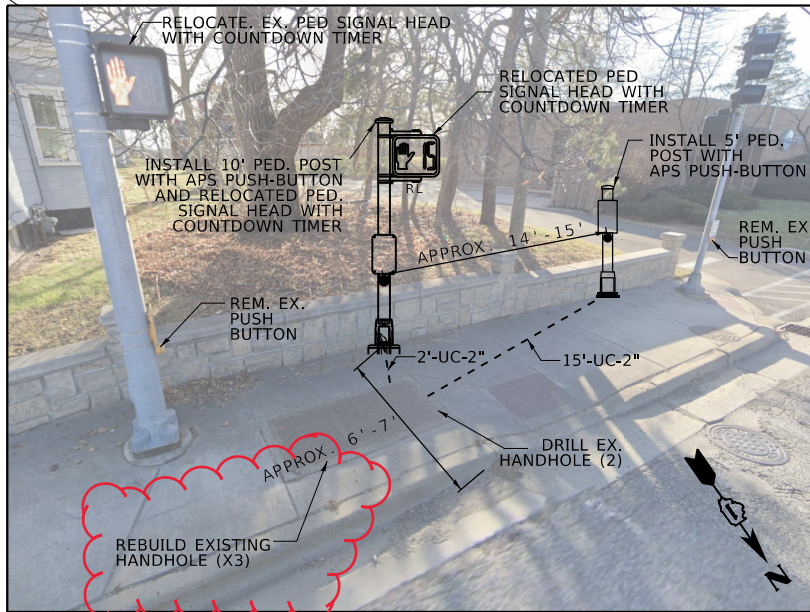
NORTHWEST CORNER



NORTHEAST CORNER



SOUTHWEST CORNER



SOUTHEAST CORNER

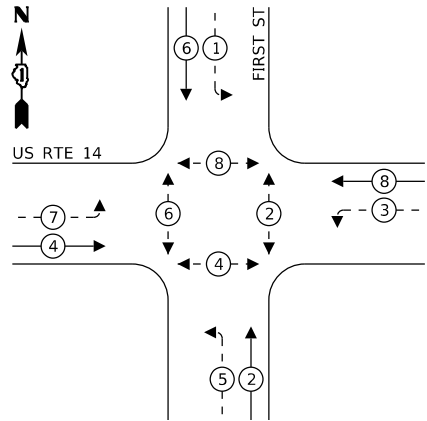
STATE OF ILLINOIS
DEPARTMENT OF TRANSPORTATION

TRAFFIC SIGNAL MODERNIZATION PLAN
U.S. ROUTE 14 AND FIRST STREET

REVISED SHEET 7/3/2024		ECON 149	
F.A. RTE.	SECTION	COUNTY	TOTAL SHEETS
305	FAP 0305 22 RS	MCHENRY	71
		CONTRACT NO. 62R97	
		ILLINOIS FED. AID PROJECT	

MODEL Default
FILE Name: 30509DesignUDLU03 InHouse Traffic20240710-622897 - US Rte 14 from Borden Ave to Spring Beach Way - Smart overlayUS 14 DGMUSRca14.dgn

EXISTING CONTROLLER SEQUENCE

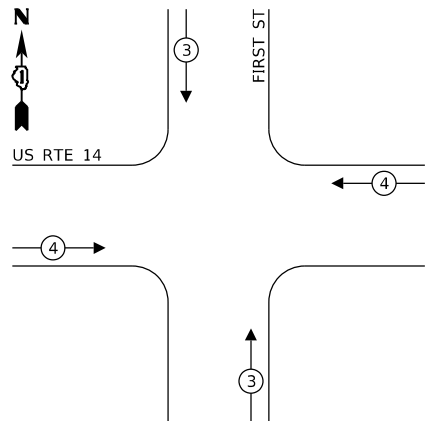


LEGEND:

- ←(*) PROTECTED PHASE
←-*(*)- PROTECTED/PERMITTED PHASE
←-*(*)- PEDESTRIAN PHASE
←(OL) OVERLAP

RIGHT TURN OVERLAP
PHASE DESIGNATION:

EXISTING EMERGENCY VEHICLE
PREEMPTION SEQUENCE



TRAFFIC SIGNAL
ELECTRICAL SERVICE REQUIREMENTS

TYPE	NO. OF LAMPS	LED WATTAGE	% OPERATION	TOTAL WATTAGE
SIGNAL (RED)	12	11	50	66.0
(YELLOW)	12	20	5	12.0
(GREEN)	12	12	45	64.8
PERMISSIVE ARROW	8	10	10	8.0
PED. SIGNAL	8	20	100	160.0
CONTROLLER	1	100	100	100.0
UPS	1	25	100	25.0
VIDEO SYSTEM	-	150	100	-
BLANK-OUT SIGN	-	25	5	-
FLASHER	-	-	50	-
STREET NAME SIGN	-	120	50	-
LUMINAIRE	-	-	-	-
TOTAL =				435.8

ENERGY COSTS TO:

VILLAGE OF CARY

755 GEORGETOWN DR
CARY, IL. 60013

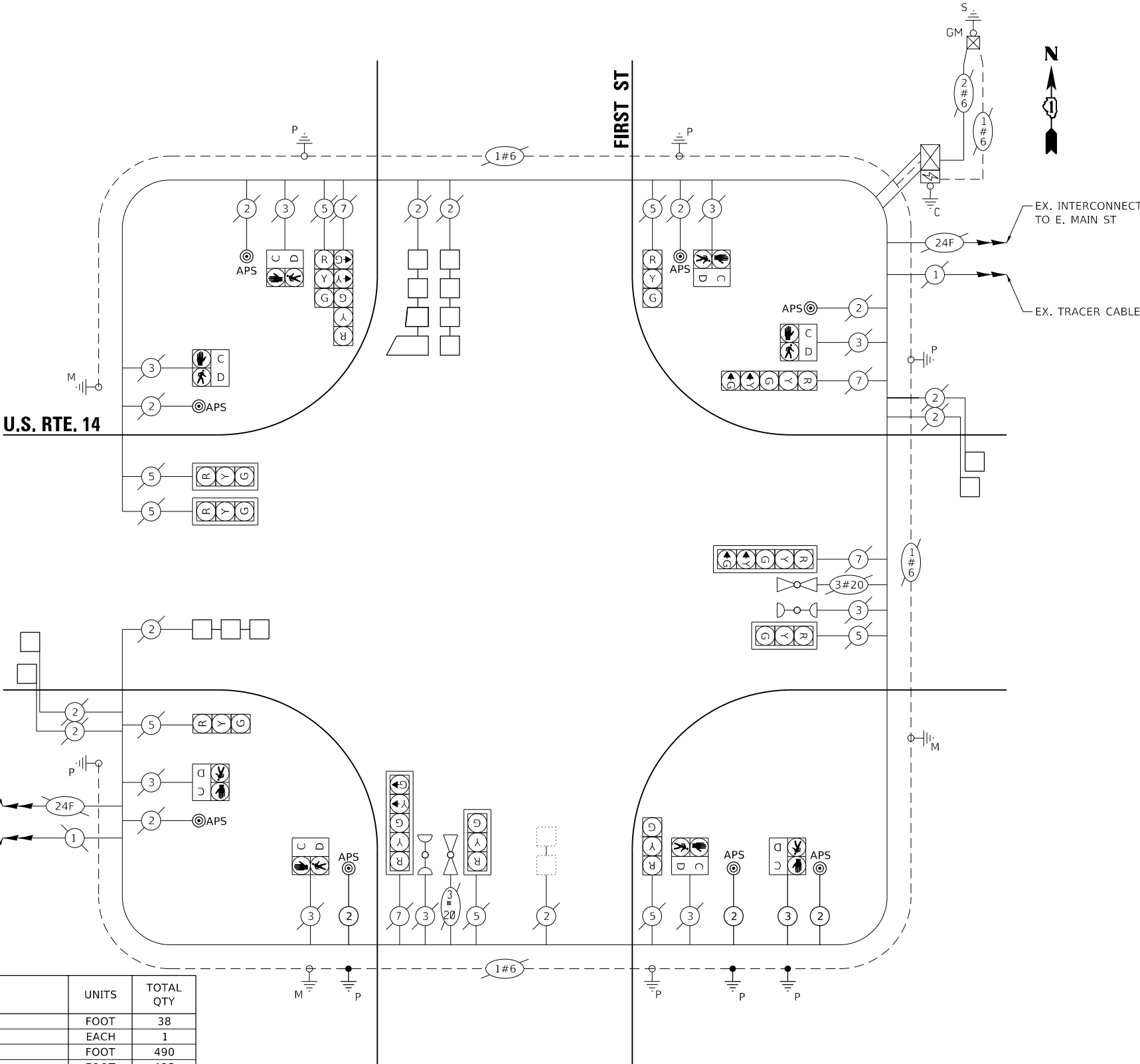
ENERGY SUPPLY: CONTACT: CASSIE EVANS
PHONE: 773-241-0741
COMPANY: COMMONWEALTH EDISON
ACCOUNT NUMBER: 03631-71304

SCHEDULE OF QUANTITIES

ITEM DESCRIPTION	UNITS	TOTAL QTY
UNDERGROUND CONDUIT, GALVANIZED STEEL, 2" DIA	FOOT	38
MAINTENANCE OF EXISTING TRAFFIC SIGNAL INSTALLATION	EACH	1
ELECTRIC CABLE IN CONDUIT, SIGNAL NO. 14 2C	FOOT	490
ELECTRIC CABLE IN CONDUIT, SIGNAL NO. 14 3C	FOOT	135
ELECTRIC CABLE IN CONDUIT, EQUIPMENT GROUNDING CONDUCTOR, NO. 6 1C	FOOT	625
DRILL EXISTING HANDHOLE	EACH	3
DETECTOR LOOP, TYPE I	FOOT	585
RELOCATE EXISTING PEDESTRIAN SIGNAL HEAD	EACH	1
MODIFY EXISTING CONTROLLER	EACH	1
REMOVE EXISTING TRAFFIC SIGNAL EQUIPMENT	EACH	1
REBUILD EXISTING HANDHOLE	EACH	4
REBUILD EXISTING DOUBLE HANDHOLE	EACH	1
PEDESTRIAN SIGNAL POST, 10 FT	EACH	1
PEDESTRIAN SIGNAL POST, 5 FT	EACH	2
ACCESSIBLE PEDESTRIAN SIGNALS	EACH	8
CONCRETE FOUNDATION TYPE A 12-INCH DIAMETER	FOOT	12
RE-OPTIMIZE TRAFFIC SIGNAL SYSTEM LEVEL 1	EACH	1

STATE OF ILLINOIS
DEPARTMENT OF TRANSPORTATION

CABLE PLAN



CABLE PLAN, PHASE DESIGNATION DIAGRAM, SCHEDULE OF QUANTITIES
AND EMERGENCY VEHICLE PREEMPTION SEQUENCE
U.S. ROUTE 14 AND FIRST STREET

SCALE: SHEET OF SHEETS STA. TO STA.

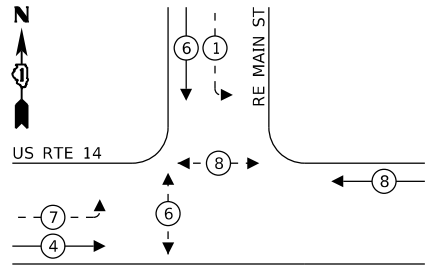
1 REVISED SHEET 7/3/2024

TS 7275

ECON 149

F.A. RTE.	SECTION	COUNTY	TOTAL SHEETS	SHEET NO.
305	FAP 0305 22 RS	MCHENRY	71	18
CONTRACT NO. 62R97				
ILLINOIS FED. AID PROJECT				

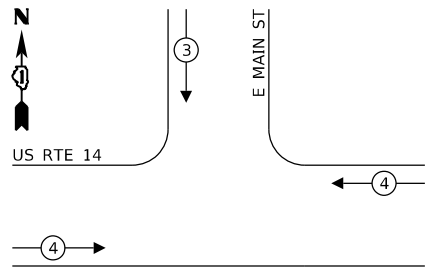
EXISTING CONTROLLER SEQUENCE



LEGEND:

- PROTECTED PHASE
- PROTECTED/PERMITTED PHASE
- PEDESTRIAN PHASE
- OVERLAP

EXISTING EMERGENCY VEHICLE
PREEMPTION SEQUENCE



TRAFFIC SIGNAL
ELECTRICAL SERVICE REQUIREMENTS

TYPE	NO. OF LAMPS	LED WATTAGE	% OPERATION	TOTAL WATTAGE
SIGNAL (RED)	13	11	50	71.5
(YELLOW)	13	20	5	13.0
(GREEN)	13	12	45	70.2
PERMISSIVE ARROW	8	10	10	8.0
PED. SIGNAL	4	20	100	80.0
CONTROLLER	1	100	100	100.0
UPS	1	25	100	25.0
VIDEO SYSTEM	-	150	100	-
BLANK-OUT SIGN	-	25	5	-
FLASHER	-	-	50	-
STREET NAME SIGN	-	120	50	-
LUMINAIRE	-	-	-	-
TOTAL =				367.7

ENERGY COSTS TO:

VILLAGE OF CARY
755 GEORGETOWN DR
CARY, IL. 60013

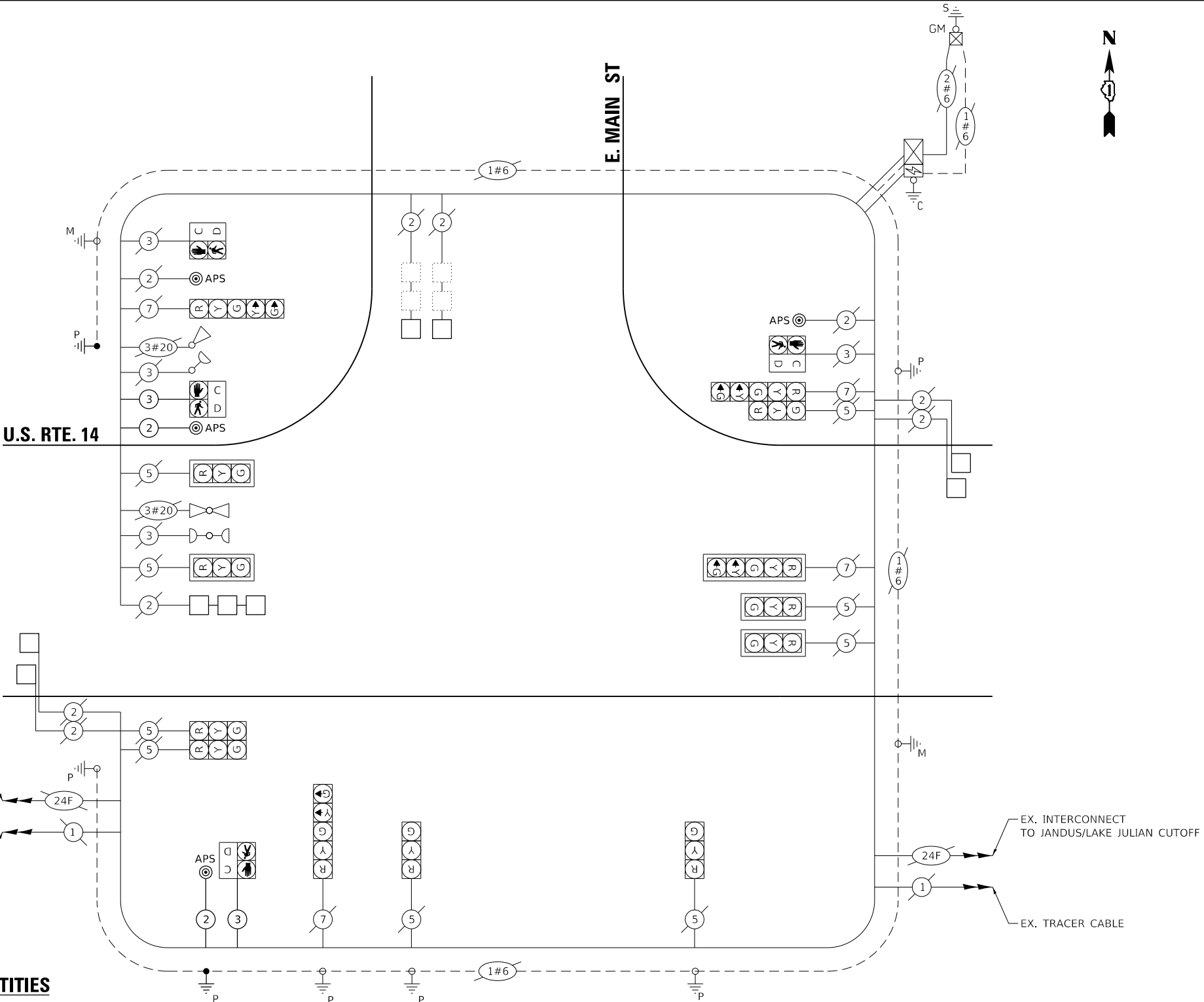
ENERGY SUPPLY: CONTACT: CASSIE EVANS
PHONE: 773-241-0741
COMPANY: COMMONWEALTH EDISON
ACCOUNT NUMBER: 03631-71304

SCHEDULE OF QUANTITIES

ITEM DESCRIPTION	UNITS	TOTAL QTY
UNDERGROUND CONDUIT, GALVANIZED STEEL, 2" DIA	FOOT	34
MAINTENANCE OF EXISTING TRAFFIC SIGNAL INSTALLATION	EACH	1
ELECTRIC CABLE IN CONDUIT, SIGNAL NO. 14 2C	FOOT	389
ELECTRIC CABLE IN CONDUIT, SIGNAL NO. 14 3C	FOOT	402
ELECTRIC CABLE IN CONDUIT, EQUIPMENT GROUNDING CONDUCTOR, NO. 6 1C	FOOT	791
DRILL EXISTING HANDHOLE	EACH	2
DETECTOR LOOP, TYPE I	FOOT	333
RELOCATE EXISTING PEDESTRIAN SIGNAL HEAD	EACH	2
MODIFY EXISTING CONTROLLER	EACH	1
REMOVE EXISTING TRAFFIC SIGNAL EQUIPMENT	EACH	1
PEDESTRIAN SIGNAL POST, 10 FT	EACH	2
ACCESSIBLE PEDESTRIAN SIGNALS	EACH	4
CONCRETE FOUNDATION TYPE A 22-INCH DIAMETER	FOOT	8
RE-OPTIMIZE TRAFFIC SIGNAL SYSTEM LEVEL 1	EACH	1

STATE OF ILLINOIS
DEPARTMENT OF TRANSPORTATION

CABLE PLAN



CABLE PLAN, PHASE DESIGNATION DIAGRAM, SCHEDULE OF QUANTITIES
AND EMERGENCY VEHICLE PREEMPTION SEQUENCE
U.S. ROUTE 14 AND E MAIN STREET

REVISD SHEET 7/3/2024

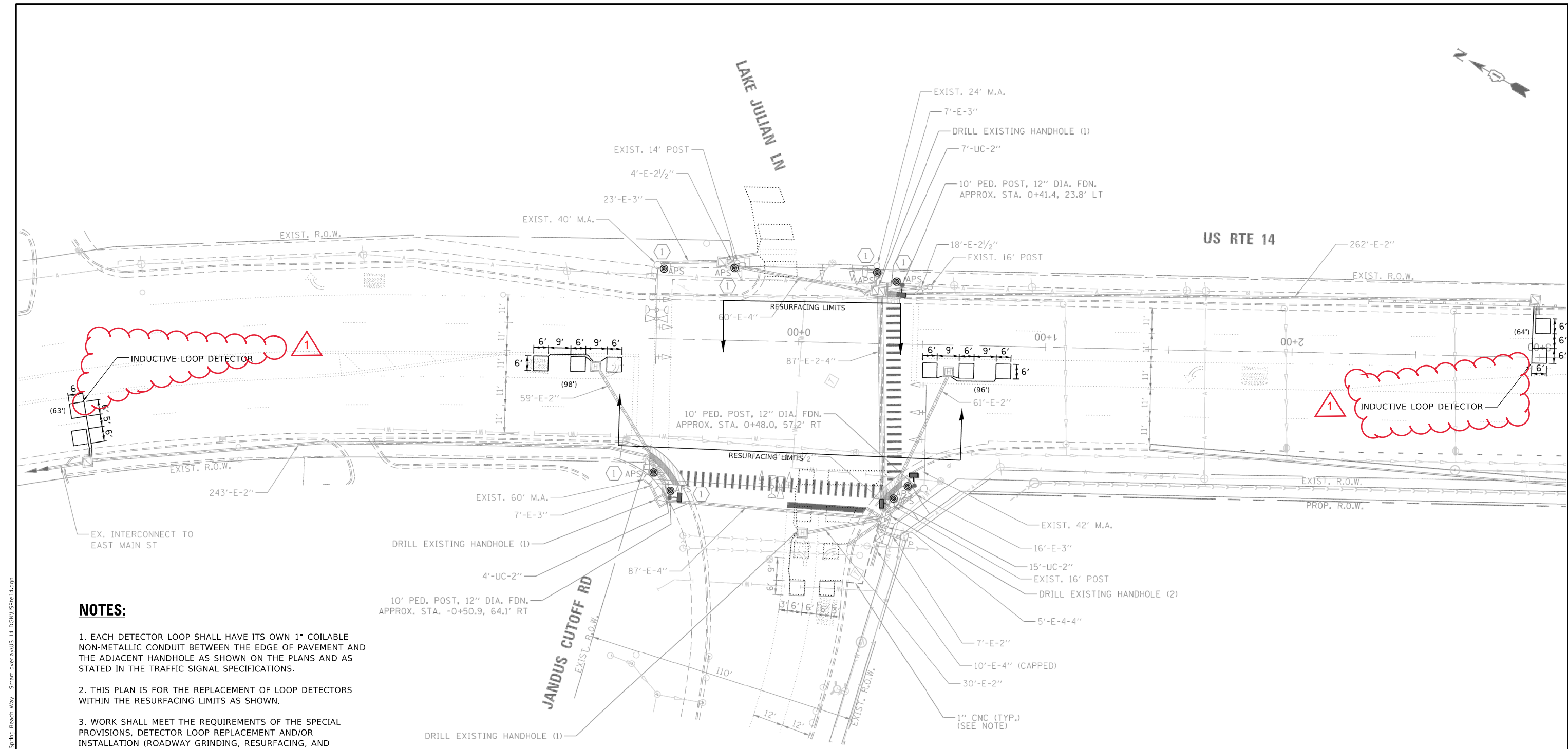
TS 7246

ECON 149

F.A. RTE.	SECTION	COUNTY	TOTAL SHEETS	SHEET NO.
305	FAP 0305 22 RS	MCHENRY	71	20
CONTRACT NO. 62R97				
ILLINOIS FED. AID PROJECT				

MODEL: Default
FILE: \\nortel\300\Design\JUL03\InHouse\Traffic\230710\62R97 - US Rte 14 from Borden Ave to Sarpio Beach Way - Smart overlay\US 14 DGM\USRte14.dgn

MODEL Default
FILE Name: 31109Design\JUL03 Inhouse Traffic\2024\10-622897 - US Rte 14 from Borden Ave to Spring Beach Way - Smart overlay\US 14 DGN\USRte14.dgn



NOTES:

- 1. EACH DETECTOR LOOP SHALL HAVE ITS OWN 1" COILABLE NON-METALLIC CONDUIT BETWEEN THE EDGE OF PAVEMENT AND THE ADJACENT HANDHOLE AS SHOWN ON THE PLANS AND AS STATED IN THE TRAFFIC SIGNAL SPECIFICATIONS.
- 2. THIS PLAN IS FOR THE REPLACEMENT OF LOOP DETECTORS WITHIN THE RESURFACING LIMITS AS SHOWN.
- 3. WORK SHALL MEET THE REQUIREMENTS OF THE SPECIAL PROVISIONS, DETECTOR LOOP REPLACEMENT AND/OR INSTALLATION (ROADWAY GRINDING, RESURFACING, AND PATCHING OPERATIONS).

SCHEDULE OF QUANTITIES

ITEM DESCRIPTION	UNITS	TOTAL QTY
MAINTENANCE OF EXISTING TRAFFIC SIGNAL INSTALLATION	EACH	1
ELECTRIC CABLE IN CONDUIT, LEAD-IN, NO. 14 1 PAIR	FOOT	689
INDUCTIVE LOOP DETECTOR	EACH	2
DETECTOR LOOP REPLACEMENT	FOOT	321

1 REVISED SHEET 7/3/2024

**TS 21815
ECON 149**

USER NAME = JASON.RODRIGUEZ	DESIGNED JR	REVISED - 1 LARSON 6/21/2024
	DRAWN JR	REVISED - 1 LARSON 6/21/2024
PLOT SCALE = 40,0000 ' / in.	CHECKED -	REVISED -
PLOT DATE = 6/24/2024	DATE 4/19/2023	REVISED -

**STATE OF ILLINOIS
DEPARTMENT OF TRANSPORTATION**

**TRAFFIC SIGNAL MODERNIZATION PLAN
U.S. ROUTE 14 AND JANUS CUTOFF RD/LAKE JULIAN LN**

SCALE: SHEET OF SHEETS STA. TO STA.

F.A. RTE.	SECTION	COUNTY	TOTAL SHEETS	SHEET NO.
305	FAP 0305 22 RS	MCHENRY	71	21
CONTRACT NO. 62R97				
ILLINOIS FED. AID PROJECT				