

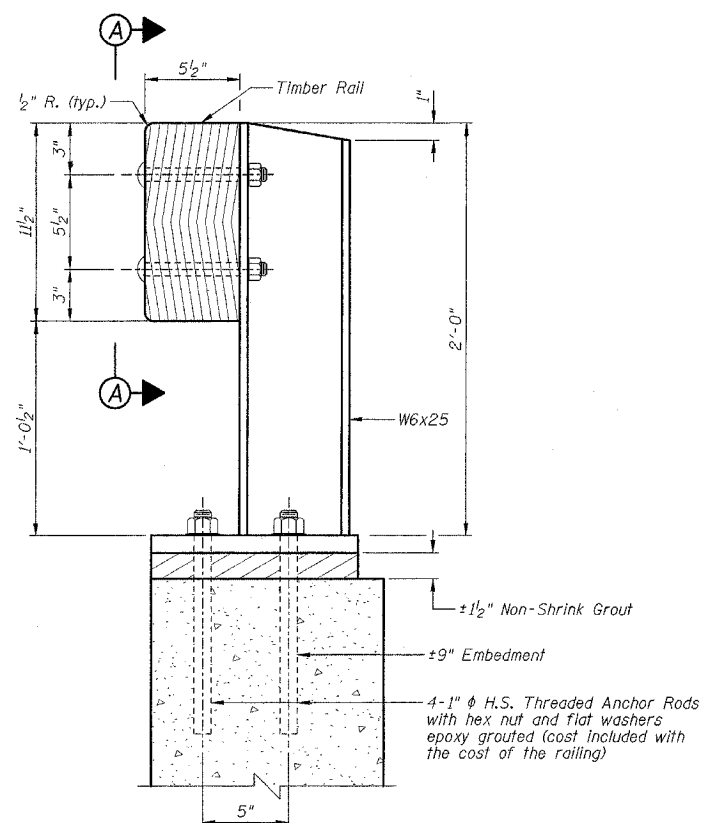
STATE OF ILLINOIS  
DEPARTMENT OF TRANSPORTATION

CONTRACT NO. 44924

F.A. RTE.	SECTION	COUNTY	TOTAL SHEETS	SHEET NO.
		POPE	60	32
STA.	TO STA.			
FED. ROAD DIST. NO.	ILLINOIS	FED. AID PROJECT		

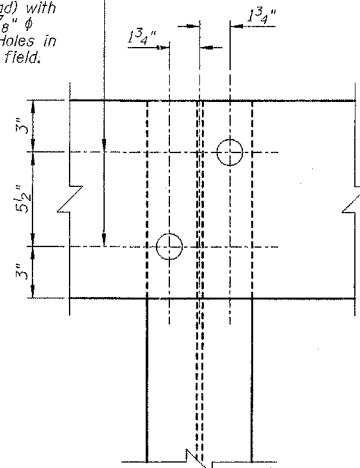
SHEET NO. B6

OF 11 SHEETS

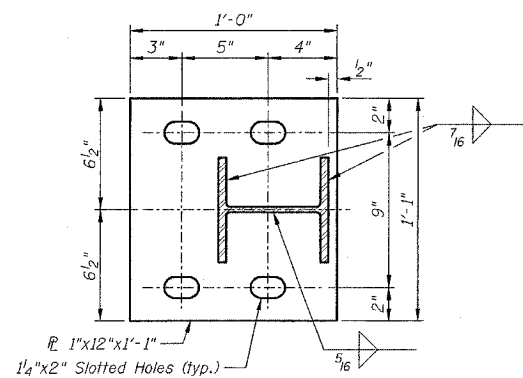


SECTION AT RAIL POST

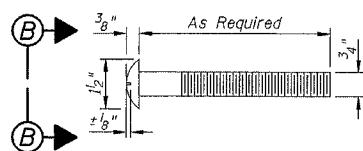
2-3/4"  $\phi$  Round Head bolts (with slot or approved recess in head) with locknut and flat washer. 9/8"  $\phi$  holes in rail and posts. Holes in rail shall be drilled in the field.



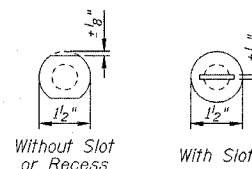
VIEW A-A



BASE PLATE DETAIL



ROUND HEAD BOLT DETAIL



VIEW B-B

NOTES

- All wood rails shall comply with Article 1007.03.
- All rails shall be rough cut. Dimensions of rails are net, not nominal dimensions.
- All rails shall be treated in accordance with Article 1007.12.
- All rail posts, splice plates and base plates shall be painted as noted in the Special Provisions.
- All other steel shapes and plates shall conform to the requirements of AASHTO M-270, Grade 36 except posts shall conform to AASHTO M-270, Grade 50.
- Bolts, cap screws and nuts shall conform to the requirements of ASTM designation A-307 except that threaded rods, nuts and washers shall conform to AASHTO M-164.
- All bolts, nuts, cap screws, washers and lock washers shall be galvanized in accordance with AASHTO M-232.
- All posts, rail splices and anchor rods shall be galvanized after shop fabrication in accordance with AASHTO M-111 and ASTM A-385.
- The contractor shall use the capsule or the adhesive cartridge type anchor rods that have been previously tested and given a prior approval by the department. The contractor shall install these anchor rods in pre-drilled holes in accordance with the manufacturer's recommendations and procedures.
- The capsule or the adhesive cartridge shall be a sealed glass capsule or a sealed glass adhesive cartridge containing premeasured amounts of the adhesive chemical.
- Nuts for 1"  $\phi$  threaded anchor rods connecting the base plate to the concrete shall be tightened to a snug fit and given an additional 1/6 turn.
- After guardrail post is mounted the area between the base plate and the existing concrete surface shall be filled with non-shrink grout.

BILL OF MATERIAL

Item	Unit	Quantity
Treated Timber Rail	Foot	82

REVISIONS	
NAME	DATE
DJM	4/02/07

ILLINOIS DEPARTMENT OF TRANSPORTATION  
TIMBER BRIDGE RAIL DETAILS  
DIXON SPRINGS STATE PARK  
ROAD OVER HILLS BRANCH  
POPE COUNTY  
STRUCTURE NO. 076-9924  
DESIGNED BY: MJG  
DATE: 11/30/06  
DRAWN BY: DJM  
CHECKED BY: MSW