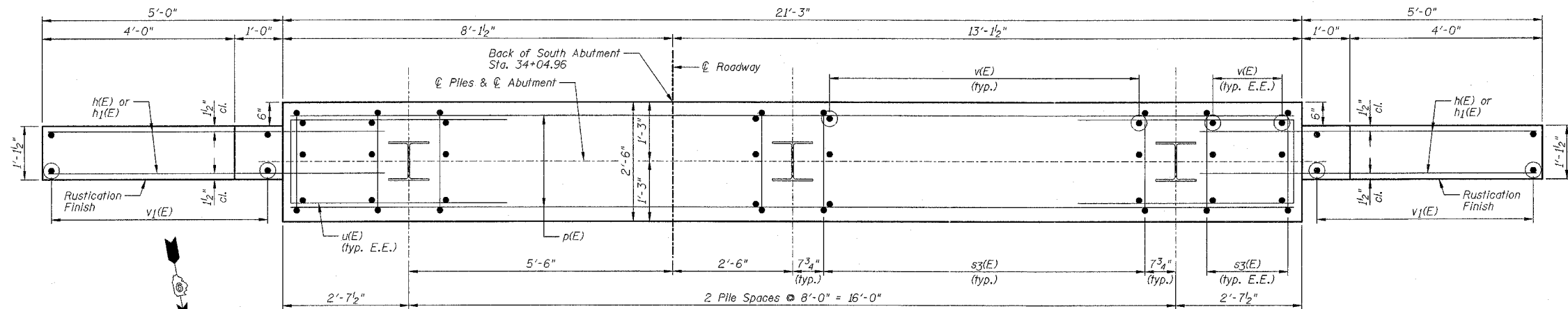


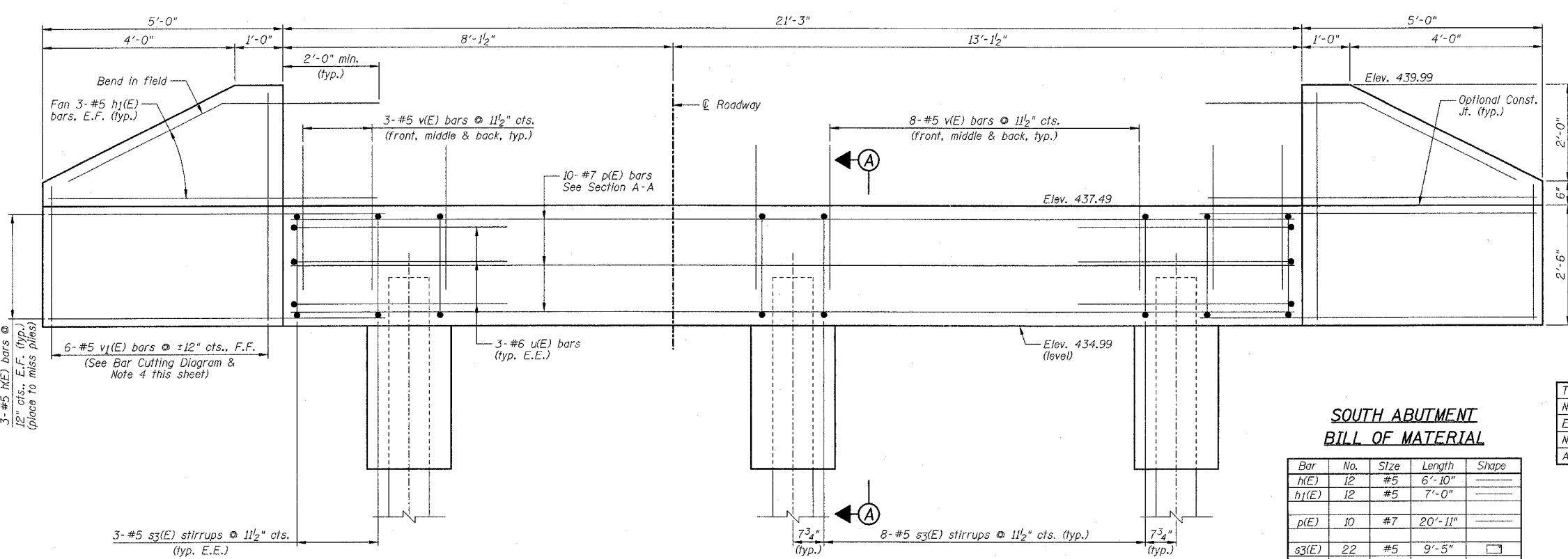
STATE OF ILLINOIS
DEPARTMENT OF TRANSPORTATION

CONTRACT NO. 44924	
F.A. RTE.	SECTION
POPE	60
COUNTY	TOTAL SHEETS
ILLINOIS	33
STA.	TO STA.
FED. ROAD DIST. NO.	ILLINOIS FED. AID PROJECT

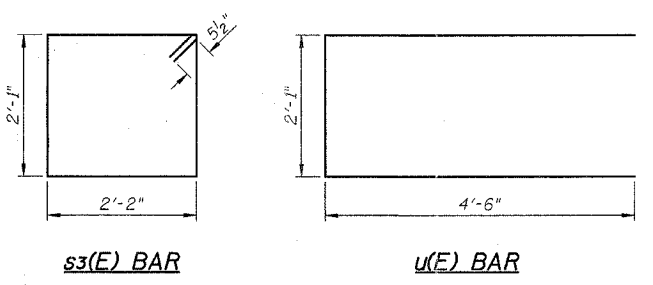
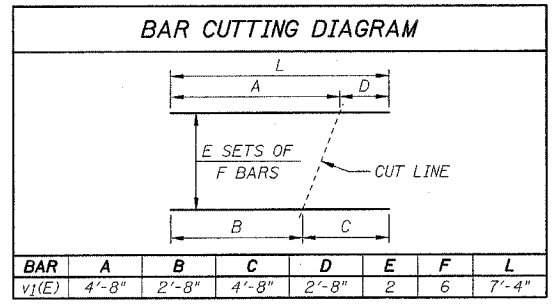
SHEET NO. B7
OF 11 SHEETS



PLAN



ELEVATION
(Looking South)



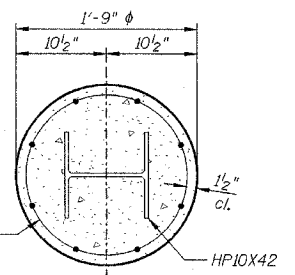
**SOUTH ABUTMENT
BILL OF MATERIAL**

Bar	No.	Size	Length	Shape
h(E)	12	#5	6'-10"	—
h1(E)	12	#5	7'-0"	—
p(E)	10	#7	20'-11"	—
s3(E)	22	#5	9'-5"	□
u(E)	6	#6	11'-1"	—
v(E)	66	#5	3'-0"	—
v1(E)	12	#5	7'-4"	—

Item	Unit	Quantity
Porous Granular Embankment, Special	Cu Yd	11
Structure Excavation	Cu Yd	40
Concrete Structure	Cu Yd	6.5
Reinforcement Bars, Epoxy Coated	Pound	1220
Furnishing Steel Piles HP10x42	Foot	20
Driving Piles	Foot	20
Test Pile Steel HP10x42	Each	1
Geocomposite Wall Drain	Sq Yd	10
Pipe Underdrains For Structures 4"	Foot	45

PILE DATA:

Type	HP10x42 Steel
No. Req'd.	2+1 Test Pile
Est. Length	10 feet
Nominal Required Bearing	300 kips
Allowable Resistance Available	100 kips



SECTION B-B

Welded Wire Fabric 6x6-W4.0xW4.0 weighing 58#/100 sq. ft. The cost of excavation, Class SI Concrete Encasement and reinforcement is included with "Furnishing Piles". Form for encasement may be omitted when soil conditions will permit.

NOTES:

- 1) Work this sheet with Sheet B2.
- 2) Reinforcement bars designated (E) shall be epoxy coated.
- 3) E.E. denotes Each End, E.F. denotes Each Face & F.F. denotes Front Face.
- 4) Order v1(E) bars full length. Cut according to Bar Cutting Diagram. Use remainder of v1(E) bars in opposite face of wingwall.
- 5) See B10 for Rustication Finish details.

REVISIONS	
NAME	DATE
DJM	4/02/07

ILLINOIS DEPARTMENT OF TRANSPORTATION
SOUTH ABUTMENT
DIXON SPRINGS STATE PARK
ROAD OVER HILLS BRANCH
POPE COUNTY
STRUCTURE NO. 076-9924
DESIGNED BY: MJG
DATE: 11/30/06
DRAWN BY: DJM
CHECKED BY: MSW