

DISTRICT ONE (CONTRACT MAINTENANCE) - PLAN PREPARATION ENGINEER: KEN ENG / JENPAI CHANG (847) 705-4432

F.A.I. RTE.	SECTION	COUNTY	TOTAL SHEETS	SHEET NO.
55	9911&2RS-9	WILL	15	1

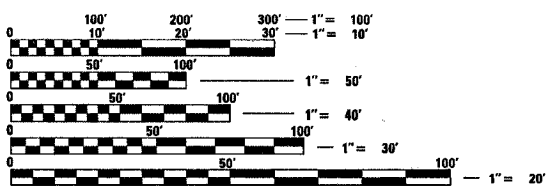
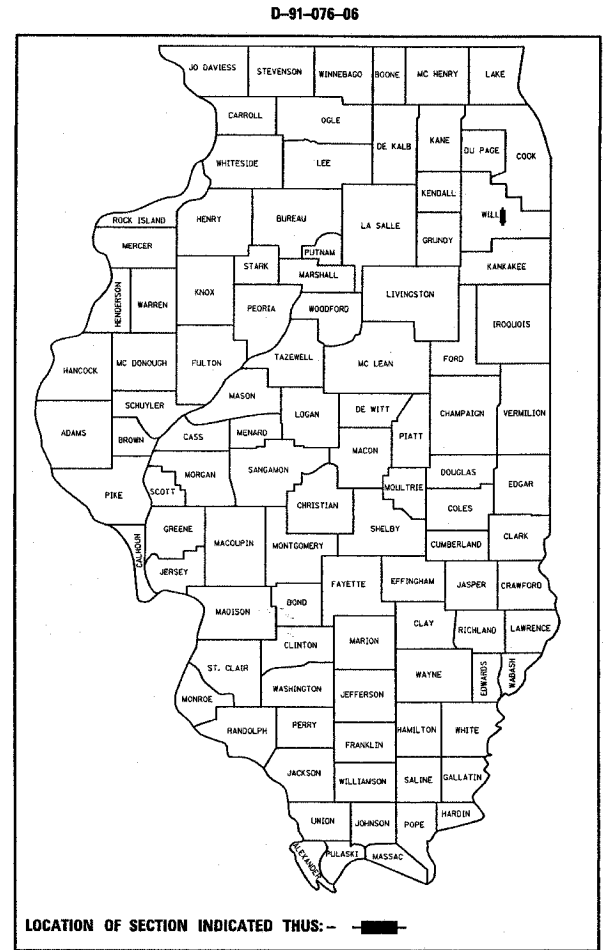
CONTRACT NO. 60A58
15-1=14

STATE OF ILLINOIS
DEPARTMENT OF TRANSPORTATION
DIVISION OF HIGHWAYS

**PROPOSED
HIGHWAY PLANS**
**FAI 55 /1-55 (W. FRONTAGE RD.)
U.S. 6 (EAMES ST.) TO BLUFF RD.**
SECTION: 99 (1&2) RS-9
RESURFACING (MAINTENANCE)
WILL COUNTY
C-91-076-06

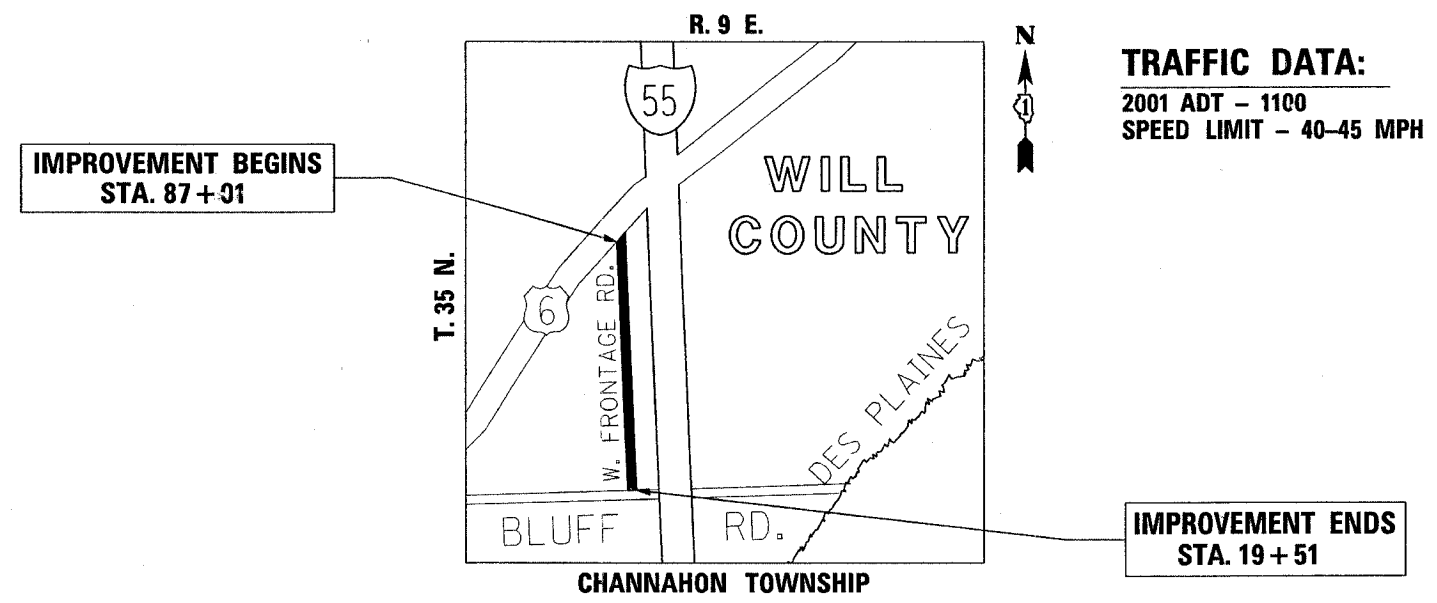
FOR INDEX OF SHEETS, SEE SHEET NO. 2

IMPROVEMENT LOCATED IN THE VILLAGE OF CHANNAHON



FULL SIZE PLANS HAVE BEEN PREPARED USING STANDARD ENGINEERING SCALES. REDUCED SIZED PLANS WILL NOT CONFORM TO STANDARD SCALES. IN MAKING MEASUREMENTS ON REDUCED PLANS, THE ABOVE SCALES MAY BE USED.

J.U.L.I.E.
JOINT UTILITY LOCATION INFORMATION FOR EXCAVATION
1-800-892-0123



TRAFFIC DATA:
2001 ADT - 1100
SPEED LIMIT - 40-45 MPH

GROSS LENGTH OF IMPROVEMENT - 7772 LIN FT = 1.47 MILES
NET LENGTH OF IMPROVEMENT - 6750 LIN FT = 1.28 MILES

STATE OF ILLINOIS
DEPARTMENT OF TRANSPORTATION
DIVISION OF HIGHWAYS

SUBMITTED June 15 2007

Diane O'Keefe
DEPUTY DIRECTOR OF HIGHWAYS, REGION ENGINEER

June 29 2007
Eric E. Haran
ENGINEER OF DESIGN AND ENVIRONMENT

June 29 2007
Melton R. See, P.E.
DIRECTOR OF HIGHWAYS, CHIEF ENGINEER

PRINTED BY THE AUTHORITY
OF THE STATE OF ILLINOIS

CONTRACT NO. 60A58