

DISTRICT ONE (CONTRACT MAINTENANCE) - PLAN PREPARATION ENGINEER: KEN ENG / JENPAI CHANG (847) 705-4432

F.A.I. RTE.	SECTION	COUNTY	TOTAL SHEETS	SHEET NO.
55	9911&2RS-9	WILL	15	1

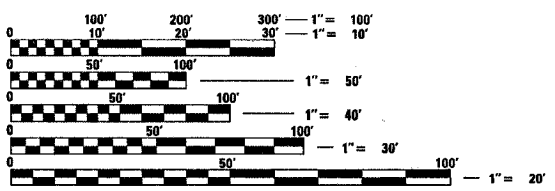
CONTRACT NO. 60A58  
15-1=14

STATE OF ILLINOIS  
DEPARTMENT OF TRANSPORTATION  
DIVISION OF HIGHWAYS

**PROPOSED  
HIGHWAY PLANS**  
**FAI 55 /1-55 (W. FRONTAGE RD.)  
U.S. 6 (EAMES ST.) TO BLUFF RD.**  
**SECTION: 99 (1&2) RS-9**  
**RESURFACING (MAINTENANCE)**  
**WILL COUNTY**  
**C-91-076-06**

FOR INDEX OF SHEETS, SEE SHEET NO. 2

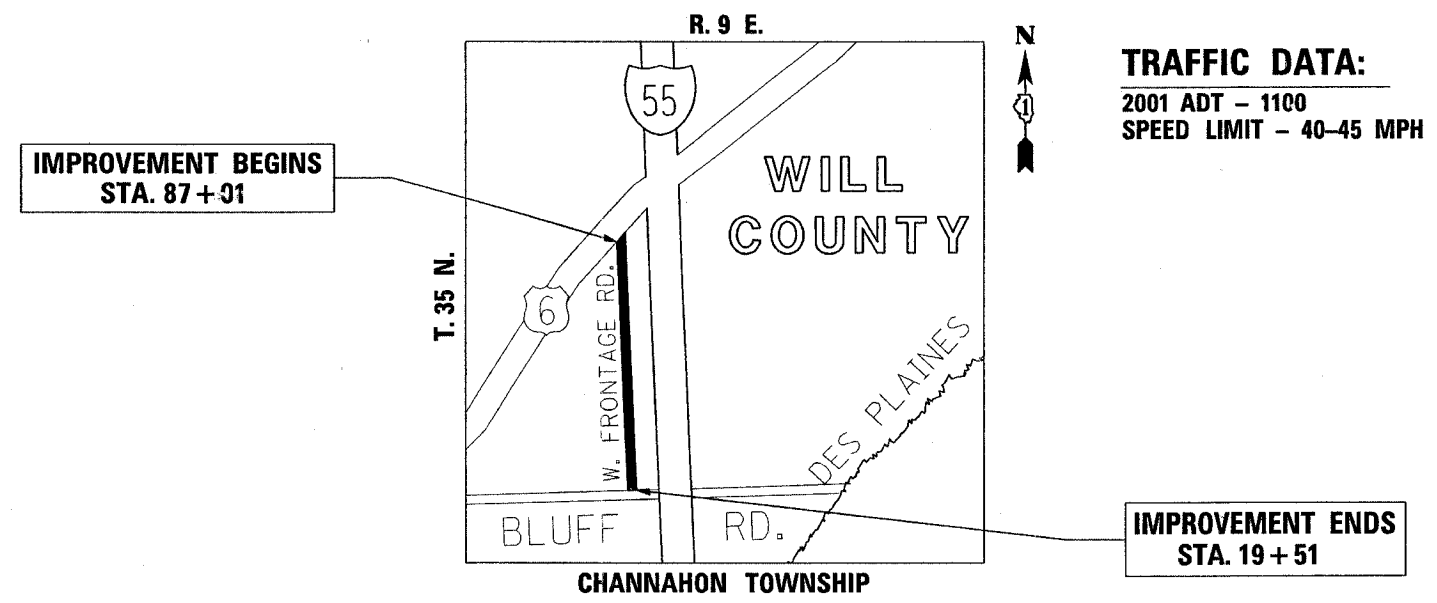
IMPROVEMENT LOCATED IN THE VILLAGE OF CHANNAHON



FULL SIZE PLANS HAVE BEEN PREPARED USING STANDARD ENGINEERING SCALES. REDUCED SIZED PLANS WILL NOT CONFORM TO STANDARD SCALES. IN MAKING MEASUREMENTS ON REDUCED PLANS, THE ABOVE SCALES MAY BE USED.

J.U.L.I.E.  
JOINT UTILITY LOCATION INFORMATION FOR EXCAVATION  
1-800-892-0123

CONTRACT NO. 60A58



**TRAFFIC DATA:**  
2001 ADT - 1100  
SPEED LIMIT - 40-45 MPH

GROSS LENGTH OF IMPROVEMENT - 7772 LIN FT = 1.47 MILES  
NET LENGTH OF IMPROVEMENT - 6750 LIN FT = 1.28 MILES

STATE OF ILLINOIS  
DEPARTMENT OF TRANSPORTATION  
DIVISION OF HIGHWAYS

SUBMITTED June 15 2007

Diane O'Keefe  
DEPUTY DIRECTOR OF HIGHWAYS, REGION ENGINEER

June 29 2007  
Eric E. Haran  
ENGINEER OF DESIGN AND ENVIRONMENT

June 29 2007  
Melton R. See, P.E.  
DIRECTOR OF HIGHWAYS, CHIEF ENGINEER

PRINTED BY THE AUTHORITY OF THE STATE OF ILLINOIS



F.A. RTE.	SECTION	COUNTY	TOTAL SHEETS	SHEET NO.
55	99 (I&2) RS-9	WILL	15	3
FED. ROAD DIST. NO. 1		ILLINOIS	HIGHWAY PROJECT	

CONTRACT NO.: 60A58

SUMMARY OF QUANTITIES			URBAN 100% STATE	CONSTRUCTION TYPE CODE					SUMMARY OF QUANTITIES			URBAN 100% STATE	CONSTRUCTION TYPE CODE				
CODE NO	ITEM	UNIT	TOTAL QUANTITIES	I000-2A					CODE NO	ITEM	UNIT	TOTAL QUANTITIES	I000-2A				
20201006	GRADING AND SHAPING SHOULDERS	UNIT	53	53					*78000650	THERMOPLASTIC PAVEMENT MARKING - LINE 24"	FOOT	20	20				
40600200	BITUMINOUS MATERIALS (PRIME COAT)	TON	10	10					*78100100	RAISED REFLECTIVE PAVEMENT MARKER	EACH	150	150				
40600300	AGGREGATE (PRIME COAT)	TON	47	47					78300200	RAISED REFLECTIVE PAVEMENT MARKER REMOVAL	EACH	135	135				
40600400	MIXTURE FOR CRACKS, JOINTS, AND FLANGEWAYS	TON	7	7					X0322256	TEMPORARY INFORMATION SIGNING	SQ FT	51.4	51.4				
40600625	LEVELING BINDER (MACHINE METHOD), N50	TON	1305	1305													
40600895	CONSTRUCTING TEST STRIP	EACH	1	1													
40600982	HOT-MIX ASPHALT SURFACE REMOVAL - BUTT JOINT	SQ YD	311	311													
40600990	TEMPORARY RAMP	SQ YD	311	311													
40601005	HOT-MIX ASPHALT REPLACEMENT OVER PATCHES	TON	74	74													
40603335	HOT-MIX ASPHALT SURFACE COURSE, MIX "D", N50	TON	1958	1958													
42001300	PROTECTIVE COAT	SQ YD	12	12													
44001700	COMBINATION CONCRETE CURB AND GUTTER REMOVAL AND REPLACEMENT	FOOT	60	60													
44002224	HOT-MIX ASPHALT REMOVAL OVER PATCHES, 6"	SQ YD	218	218													
44201705	CLASS D PATCHES, TYPE I, 12 INCH	SQ YD	132	132													
44201709	CLASS D PATCHES, TYPE II, 12 INCH	SQ YD	42	42													
44201794	CLASS D PATCHES, TYPE III, 12 INCH	SQ YD	22	22													
48101200	AGGREGATE SHOULDERS, TYPE B	TON	221	221													
67000400	ENGINEER'S FIELD OFFICE, TYPE A	CAL MO	3	3													
67100100	MOBILIZATION	L SUM	1	1													
70100450	TRAFFIC CONTROL AND PROTECTION, STANDARD 701201	L SUM	1	1													
70100460	TRAFFIC CONTROL AND PROTECTION, STANDARD 701306	L SUM	1	1													
70300100	SHORT-TERM PAVEMENT MARKING	FOOT	1809	1809													
70300220	TEMPORARY PAVEMENT MARKING - LINE 4"	FOOT	19313	19313													
70300280	TEMPORARY PAVEMENT MARKING - LINE 24"	FOOT	20	20													
70301000	WORK ZONE PAVEMENT MARKING REMOVAL	SQ FT	6679	6679													
*78000200	THERMOPLASTIC PAVEMENT MARKING - LINE 4"	FOOT	19313	19313													

\* SPECIALTY ITEMS

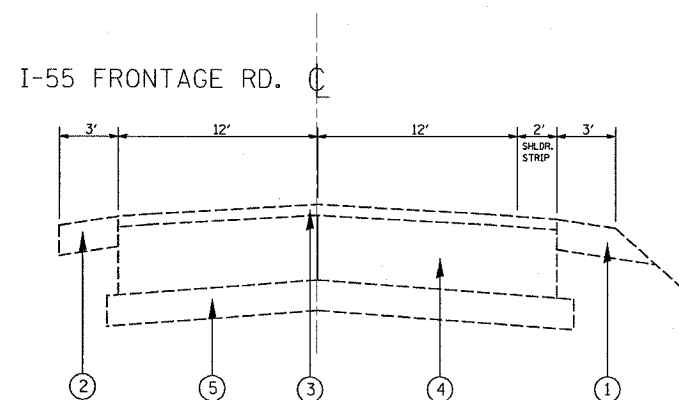
REVISIONS	
NAME	DATE

ILLINOIS DEPARTMENT OF TRANSPORTATION  
**SUMMARY OF QUANTITIES**  
 F.A.I. RTE. 55/I-55 W. FRONTAGE RD.  
 US 6 (E. EAMES ST.) TO BLUFF RD.

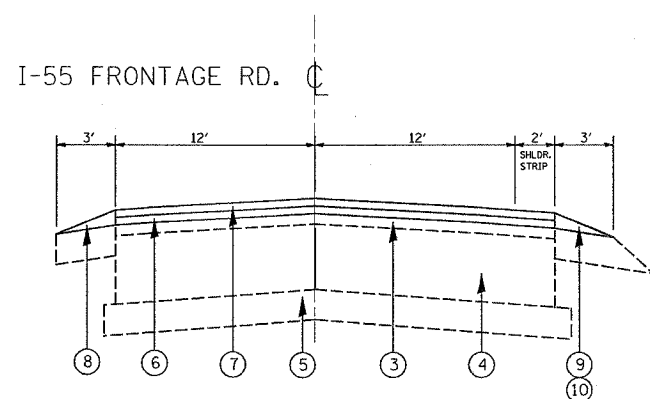
PLOT DATE: 6/18/2007

6/18/2007

F.A.I. RTE.	SECTION	COUNTY	TOTAL SHEETS	SHEET NO.
55	9911&21RS-9	WILL	15	4
STA.		TO STA.		
FED. ROAD DIST. NO.	ILLINOIS	FED. AID PROJECT		
CONTRACT NO. 60A58				



EXISTING TYPICAL SECTION  
STA. 87+01 TO 19+51



PROPOSED TYPICAL SECTION  
STA. 87+01 TO 19+51

LEGEND:

- ① EXISTING AGGREGATE SHOULDER, 3'
- ② EXISTING HOT-MIX ASPHALT SHOULDER, 6"
- ③ EXISTING HOT-MIX ASPHALT SURFACE, 6"
- ④ EXISTING P.C.C. PAVEMENT, 12"
- ⑤ EXISTING STABILIZED SUB-BASE
- ⑥ PROPOSED LEVELING BINDER (MACHINE METHOD), N50, 1"
- ⑦ PROPOSED HOT-MIX ASPHALT SURFACE COURSE, SUPERPAVE, MIX "D", N50, 1 1/2"
- ⑧ PROPOSED HOT-MIX ASPHALT SHOULDER, 3'
- ⑨ PROPOSED GRADING AND SHAPING SHOULDERS, 3'
- ⑩ PROPOSED AGGREGATE SHOULDERS, 3'

MIXTURE REQUIREMENTS

MIXTURE USE	AC/PG	RAP % (MAX)	DESIGN AIR VOIDS
HOT-MIX ASPHALT SURFACE COURSE, MIX "D", N50	PG 64-22	15	4% @ 50
LEVELING BINDER (MACHINE METHOD), N50	PG 64-22/ 58-22	25	4% @ 50
HOT-MIX ASPHALT REPLACEMENT OVER PATCHES, IL-19MM	PG 64-22	15	4% @ 70
CLASS "D" PATCHES, 10" BINDER COURSE, IL-19	PG 64-22	15	4% @ 70

NOTES:

THE UNIT WEIGHT USED TO CALCULATE ALL HOT-MIX ASPHALT SURFACE MIX QUANTITIES IS 112 LBS./SQ. YD./ IN.

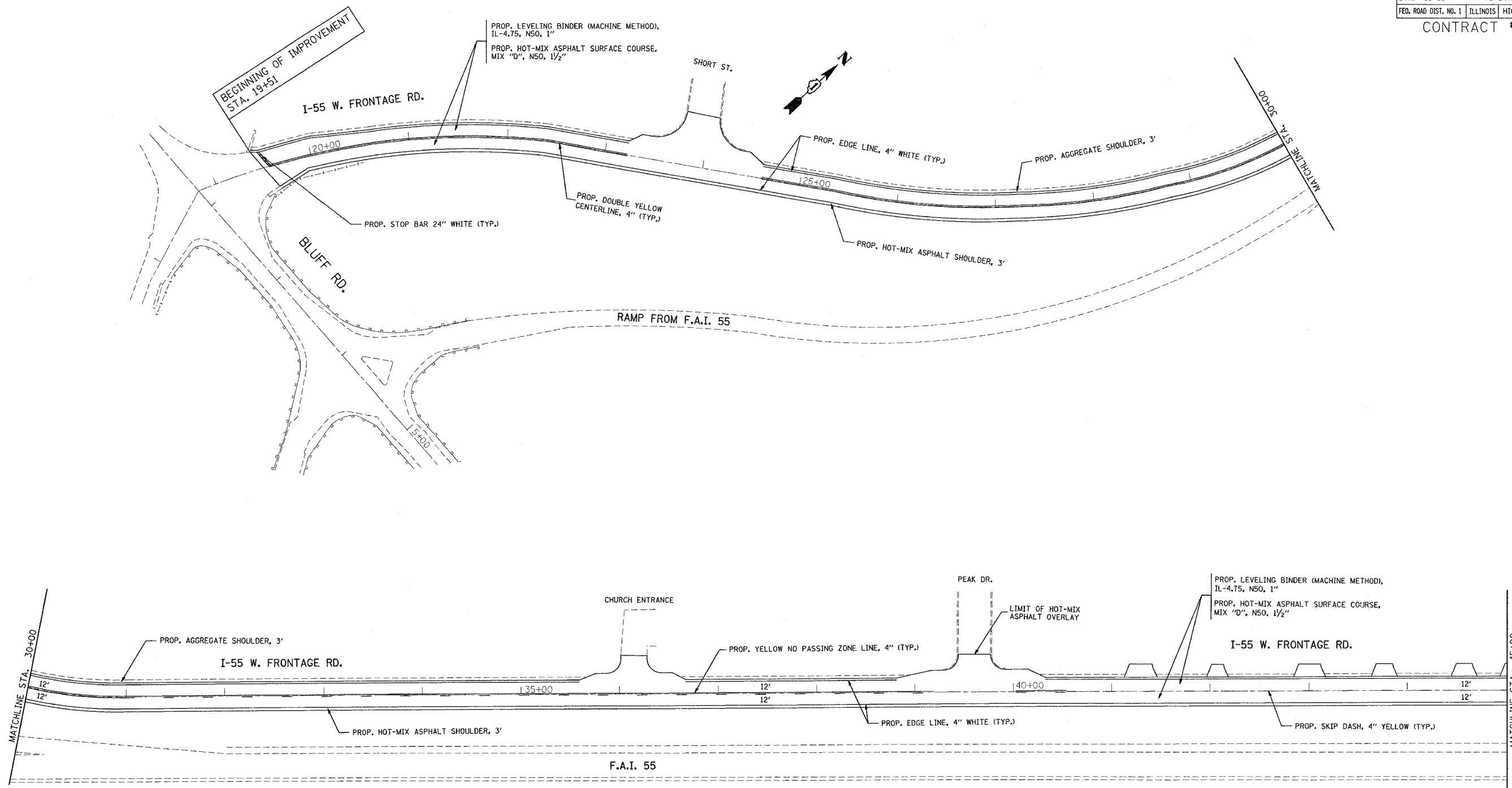
WHEN RAP % EXCEEDS 20%, THE NEW ASPHALT BINDER IN THE MIX SHALL BE PG 58-22

PLOT DATE = 6/25/2007  
 PLOT SCALE = 1/8" = 1'-0"  
 USER NAME = steedpa

REVISIONS		ILLINOIS DEPARTMENT OF TRANSPORTATION TYPICAL SECTIONS F.A.I. 55/I-55 FRONTAGE RD. U.S. 6 (EAMES RD.) TO BLUFF RD.
NAME	DATE	
SCALE:	VERT. HORIZ.	DRAWN BY: P. STEED
DATE		CHECKED BY

F.A.I. RTE.	SECTION	COUNTY	TOTAL SHEETS	SHEET NO.
55	99 (1&2) RS-9	WILL.	15	5
STA. 19+51		TO STA. 45+00		
FED. ROAD DIST. NO. 1   ILLINOIS   HIGHWAY PROJECT				

CONTRACT #60A58



**NOTES:**  
 PERMANENT PAVEMENT MARKINGS SHALL BE THERMOPLASTIC (OF THE EXTRUDED TYPE) AND SHOULD BE PLACED IN ACCORDANCE WITH "DISTRICT ONE TYPICAL PAVEMENT MARKINGS" DETAIL. (TC-13)  
 RAISED REFLECTIVE PAVEMENT MARKERS SHALL BE IN ACCORDANCE WITH THE DISTRICT ONE "TYPICAL APPLICATION RAISED REFLECTIVE PAVEMENT MARKERS DETAIL."  
 THE RESIDENT ENGINEER SHOULD CONTACT MS. CORA MATHIS, AREA TRAFFIC FIELD ENGINEER, AT (815) 485-6475 PRIOR TO PLACING ANY PERMANENT PAVEMENT MARKINGS.

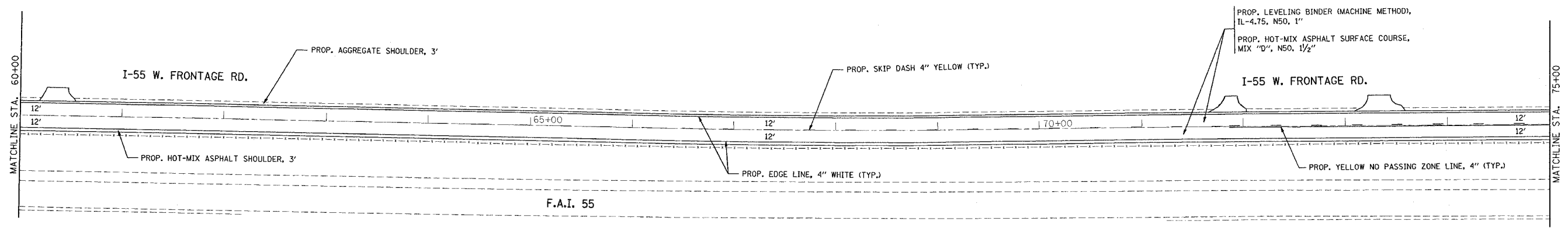
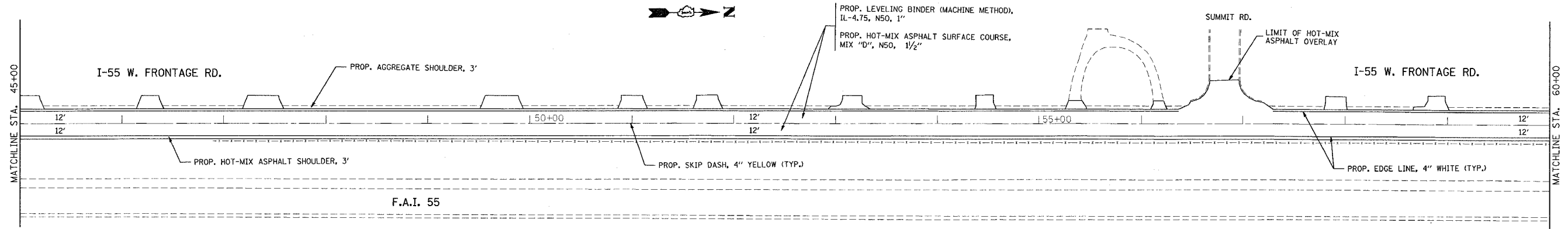
REVISIONS	
NAME	DATE

ILLINOIS DEPARTMENT OF TRANSPORTATION  
 F.A.I. 55/I-55 FRONTAGE RD.  
 U.S. 6 (EAMES RD.) TO BLUFF RD.  
 ROADWAY AND PAVEMENT MARKING PLAN  
 VERT. SCALE: 1"=50'  
 HORIZ. SCALE: 1"=50'  
 DATE 6/25/2007  
 DRAWN BY: P. STEED  
 CHECKED BY:

6/25/2007  
 c:\p\projects\107606\design\oa.dgn  
 REF-

F.A.I. RTE.	SECTION	COUNTY	TOTAL SHEETS	SHEET NO.
55	99 (I&2) RS-9	WILL	15	6
STA. 45+00		TO STA. 75+00		
FED. ROAD DIST. NO. 1   ILLINOIS   HIGHWAY PROJECT				

CONTRACT #60A58



REVISIONS	
NAME	DATE

ILLINOIS DEPARTMENT OF TRANSPORTATION  
 F.A.I. 55/I-55 FRONTAGE RD.  
 U.S. 6 (EAMES RD.) TO BLUFF RD.  
 ROADWAY AND PAVEMENT MARKING PLAN

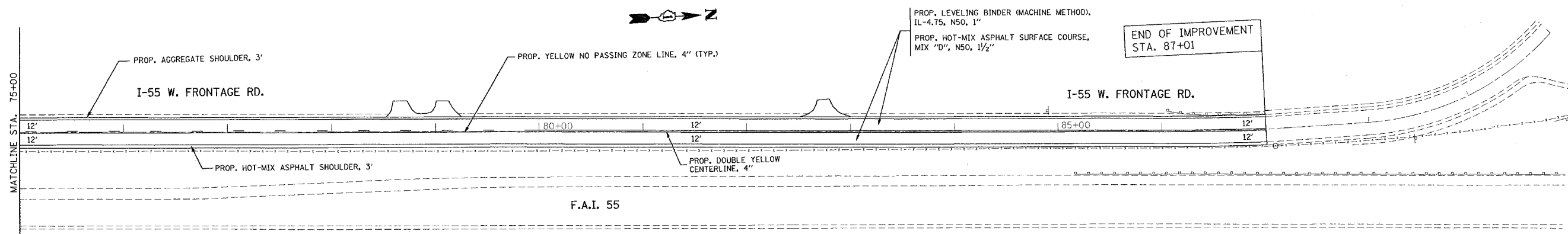
SCALE: VERT. 1"=50'  
 HORIZ. 1"=50'  
 DATE 6/25/2007

DRAWN BY: P. STEED  
 CHECKED BY:

6/25/2007  
 c:\p\projects\1076068\design\_00.dgn  
 \*REF-  
 \*REV-

F.A.I. RTE.	SECTION	COUNTY	TOTAL SHEETS	SHEET NO.
55	99 (1&2) RS-9	WILL	15	7
STA. 75+00		TO STA. 87+01		
FED. ROAD DIST. NO. 1		ILLINOIS HIGHWAY PROJECT		

CONTRACT #60A58



6/25/2007  
 REF: object1.dwg  
 REF: AREF -

REVISIONS	
NAME	DATE

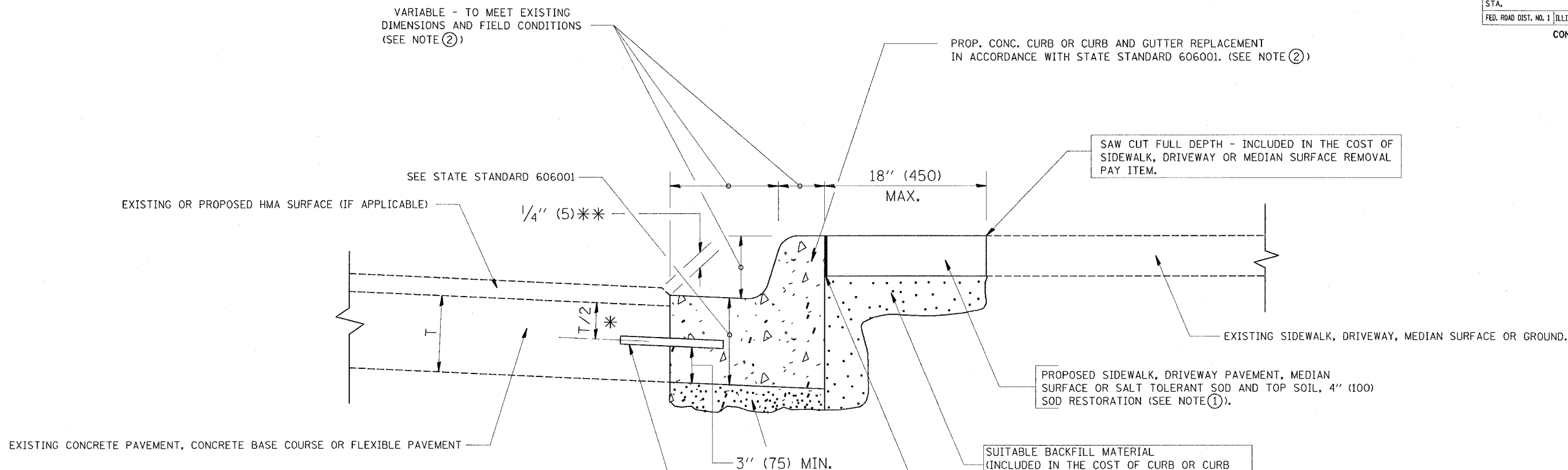
ILLINOIS DEPARTMENT OF TRANSPORTATION  
 F.A.I. 55/I-55 FRONTAGE RD.  
 U.S. 6 (EAMES RD.) TO BLUFF RD.  
 ROADWAY AND PAVEMENT MARKING PLAN

SCALE: VERT. 1"=50'  
 HORIZ. 1"=50'  
 DATE 6/25/2007

DRAWN BY: P. STEED  
 CHECKED BY:

VI=

F.A.I. RTE.	SECTION	COUNTY	TOTAL SHEETS	SHEET NO.
55	991&2RS-9	WILL	15	9
STA.	TO STA.			
FED. ROAD DIST. NO. 1	ILLINOIS	FED. AID PROJECT		
CONTRACT NO. 60A58				



- \* 3" (75) MINIMUM FROM TOP AND BOTTOM OF THE CONCRETE PAVEMENT OR BASE COURSE.
- \* \* IF THE FINAL SURFACE OF THE PAVEMENT IS CONCRETE, THE GUTTER IS TO BE FLUSH WITH THE PAVEMENT.

- NOTE: ① SIDEWALK, DRIVEWAY PAVEMENT OR MEDIAN SURFACE SHALL BE SIMILAR TO THE MATERIAL BEING REMOVED AND WILL BE PAID FOR SEPARATELY.
- SALT TOLERANT SOD AND TOP SOIL, 4" (100) RESTORATION WILL NOT BE PAID FOR SEPARATELY, BUT SHALL BE INCLUDED IN THE COST OF CURB OR CURB AND GUTTER REMOVAL AND REPLACEMENT.
- ② CURB OR CURB AND GUTTER REPLACEMENT SHALL MATCH THE SHAPE OF THE EXISTING CURB OR CURB AND GUTTER UNLESS OTHERWISE SPECIFIED.
- ③ FOR CURB OR CURB AND GUTTER REMOVAL AND REPLACEMENT ADJACENT TO FLEXIBLE PAVEMENT DELETE EPOXY COATED TIE BARS.
- ④ LONGITUDINAL BARS, IF ENCOUNTERED IN THE EXISTING CURB OR CURB AND GUTTER, ARE NOT TO BE REPLACED. CUTTING AND REMOVING LONGITUDINAL BARS SHALL BE INCLUDED IN THE COST OF CURB OR CURB AND GUTTER REMOVAL AND REPLACEMENT.
- ⑤ THE COST OF HMA SURFACE REMOVAL IN THE EXISTING GUTTER FLAG SHALL BE INCLUDED IN THE COST OF THE CURB AND GUTTER REMOVAL AND REPLACEMENT.
- ⑥ THE REMOVAL AND REPLACEMENT OF THE EXISTING CURB OR CURB AND GUTTER SHALL BE DONE IN ACCORDANCE WITH THE APPLICABLE PORTIONS OF SECTION 440 AND 606 OF THE STANDARD SPECIFICATIONS.
- ⑦ THE LOCATIONS OF REMOVAL AND REPLACEMENT OF EXISTING CURB OR CURB AND GUTTER SHALL BE DETERMINED BY THE RESIDENT ENGINEER AT THE TIME OF CONSTRUCTION.

- UNSUITABLE SUB-BASE MATERIAL TO BE REMOVED, IF DIRECTED BY THE ENGINEER, SHALL BE REPLACED WITH EITHER SUB-BASE GRANULAR MATERIAL, TYPE B OR ADDITIONAL THICKNESS OF CONCRETE.
- REMOVAL AND REPLACEMENT 4" (100) OR LESS IS INCLUDED IN THE COST OF CURB OR CURB AND GUTTER REMOVAL AND REPLACEMENT.
- REMOVAL AND REPLACEMENT IN EXCESS OF 4" (100) WILL BE PAID FOR IN ACCORDANCE WITH ARTICLE 109.04 OF THE STANDARD SPECIFICATIONS.

PROPOSED #6 (20) EPOXY COATED TIE BARS 24" (600) LONG AT 24" (600) CENTERS WILL NOT BE PAID FOR SEPARATELY. DELETE EPOXY COATED TIE BARS IF EXISTING TIE BARS ARE USABLE AS DETERMINED BY THE ENGINEER. (SEE NOTE ③).

**BASIS OF PAYMENT:**  
THIS WORK WILL BE PAID FOR AT THE CONTRACT UNIT PRICE PER FOOT (METER) FOR "CURB REMOVAL AND REPLACEMENT" OR "COMBINATION CONCRETE CURB AND GUTTER REMOVAL AND REPLACEMENT".

ALL DIMENSIONS ARE IN INCHES (MILLIMETERS) UNLESS OTHERWISE SHOWN.

## CURB OR CURB AND GUTTER REMOVAL AND REPLACEMENT

REVISIONS	
NAME	DATE
A. HOUSEH	03/11/94
R. SHAH	02/24/95
R. SHAH	03/02/95
R. SHAH	08/19/96
R. SHAH	09/12/96
R. SHAH	09/19/96
R. SHAH	10/03/96
A. ABBAS	03/21/97
M. GOMEZ	01/22/01
R. BORO	01/01/07

ILLINOIS DEPARTMENT OF TRANSPORTATION  
  
CURB OR  
CURB AND GUTTER  
REMOVAL AND REPLACEMENT

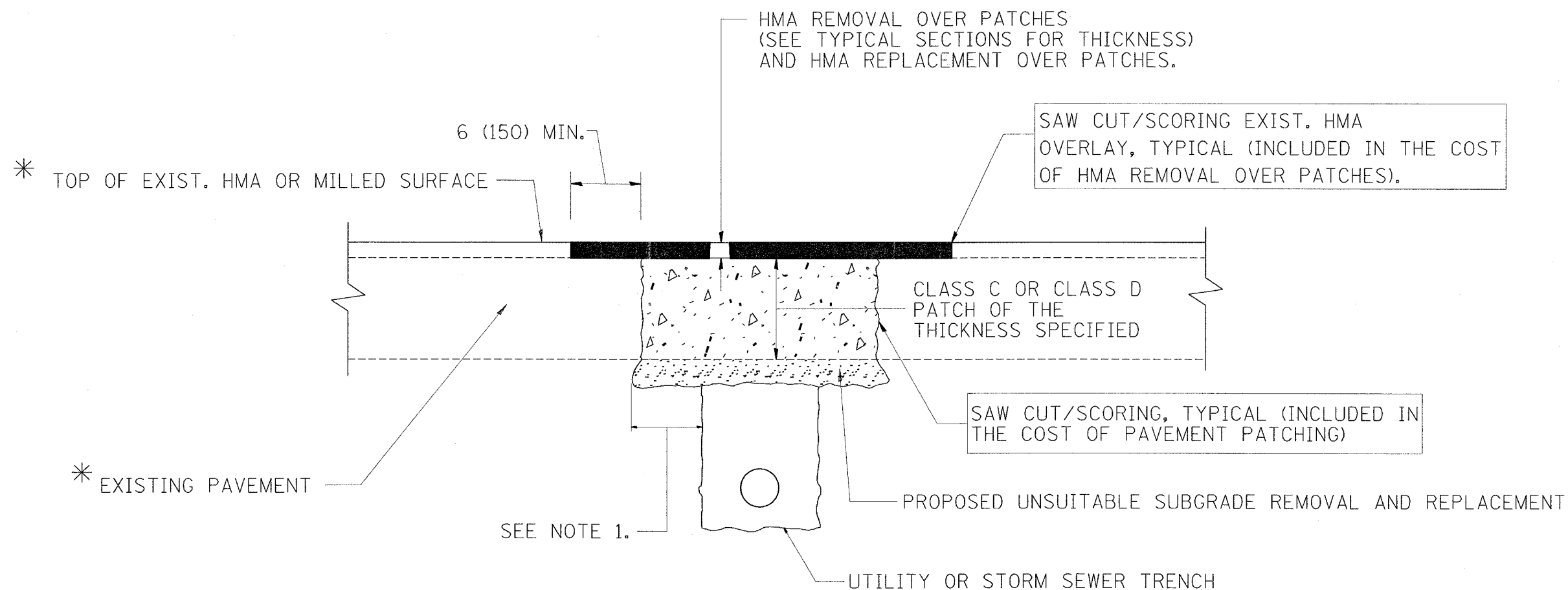
SCALE: VERT. NONE  
HORIZ.  
PLOT DATE: 6/11/2007

DRAWN BY  
CHECKED BY  
BD600-06 (BD-24)

REVISION DATE: 01/01/07



F.A.I. RTE.	SECTION	COUNTY	TOTAL SHEETS	SHEET NO.
55	99(1&2)RS-9	WILL	15	10
STA.		TO STA.		
FED. ROAD DIST. NO. 1		ILLINOIS FED. AID PROJECT		
CONTRACT NO. 60A58				



\* SEE TYPICAL SECTIONS FOR THICKNESS AND MATERIALS

**NOTES:**

1. THE WIDTH OF THE FULL DEPTH PATCH OVER A TRENCH SHALL BE 12 (300) WIDER ON EACH SIDE OF THE TRENCH.
2. FOR METHOD OF MEASUREMENT AND BASIS OF PAYMENT, SEE RECURRING SPECIAL PROVISION "PATCHING WITH HOT-MIX ASPHALT OVERLAY REMOVAL".

**SEQUENCE OF CONSTRUCTION**

1. REMOVE THE EXISTING HMA MATERIAL OVER THE AREA TO BE PATCHED.
2. REMOVE AND REPLACE FULL DEPTH PATCHES
3. REPLACE HMA MATERIAL OVER THE AREA TO BE PATCHED.

ALL DIMENSIONS ARE IN INCHES (MILLIMETERS) UNLESS OTHERWISE SHOWN.

REVISIONS	
NAME	DATE
R. SHAH	10/25/94
R. SHAH	01/14/95
R. SHAH	03/23/95
R. SHAH	04/24/95
A. HOUSEH	03/15/96
A. ABBAS	03/21/97
A. ABBAS	01/20/98
ART ABBAS	04/27/98
R. BORO	01/01/07

ILLINOIS DEPARTMENT OF TRANSPORTATION

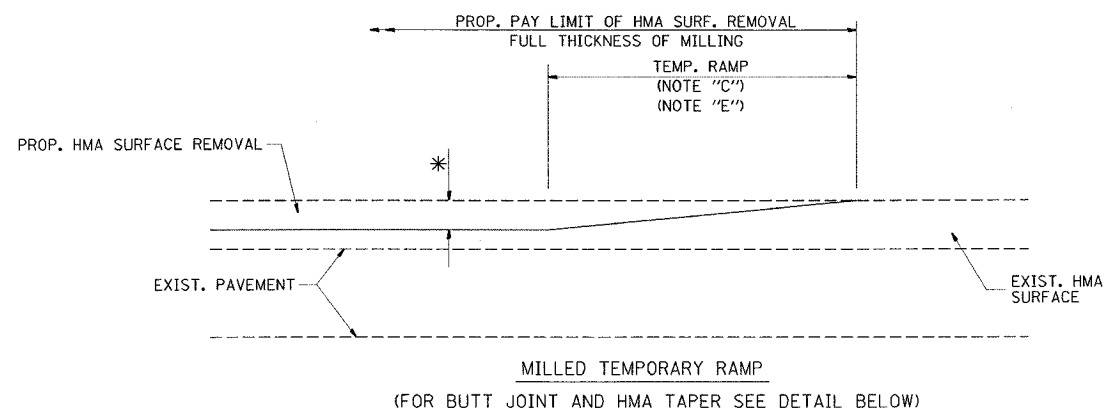
**PAVEMENT PATCHING FOR HMA SURFACED PAVEMENT**

SCALE: VERT. NONE  
HORIZ. NONE  
PLOT DATE: 6/11/2007

DRAWN BY  
CHECKED BY

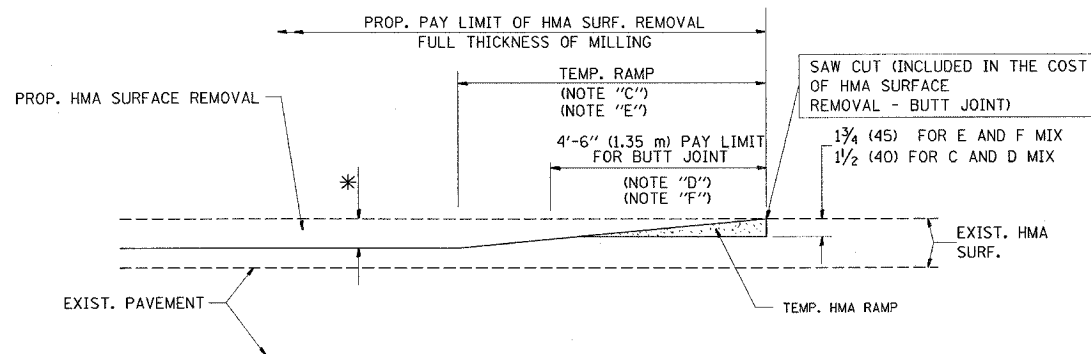
BD400-04 (BD-22)  
REVISION DATE: 01/01/07

F.A.I. RTE.	SECTION	COUNTY	TOTAL SHEETS	SHEET NO.
55	99(1&2)RS-9	WILL	15	11
STA.		TO STA.		
FED. ROAD DIST. NO. 1		ILLINOIS FED. AID PROJECT		
CONTRACT NO. 60A58				



MILLED TEMPORARY RAMP  
(FOR BUTT JOINT AND HMA TAPER SEE DETAIL BELOW)

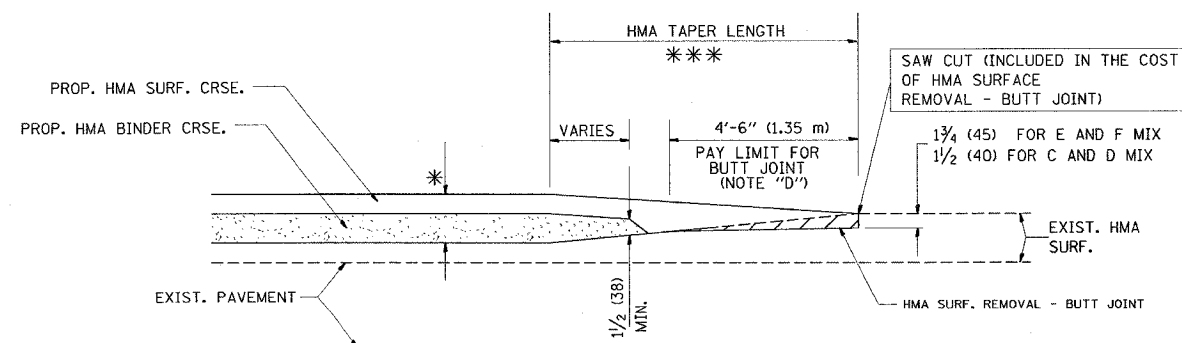
OPTION 1



HMA CONSTRUCTED TEMPORARY RAMP  
(FOR BUTT JOINT AND HMA TAPER SEE DETAIL BELOW)

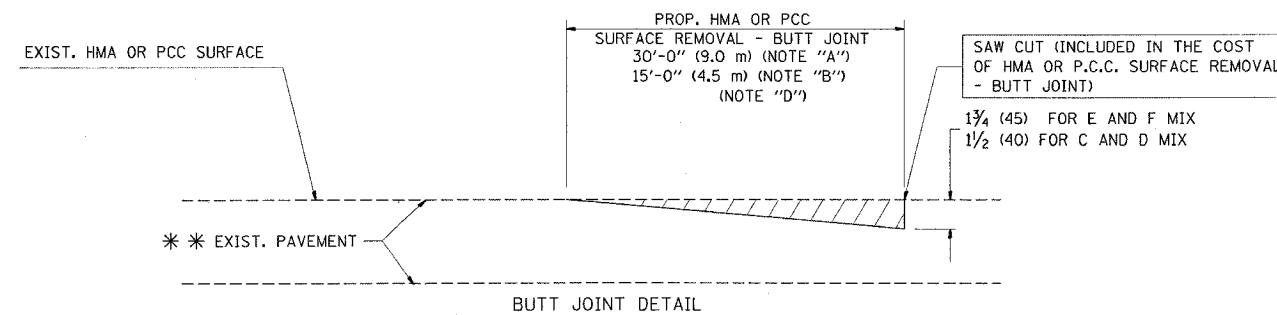
OPTION 2

TYPICAL TEMPORARY RAMP

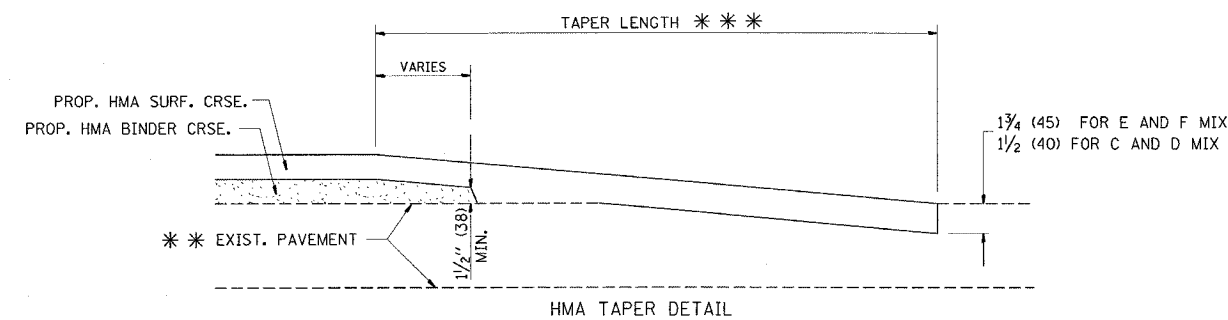


BUTT JOINT AND  
HMA TAPER

TYPICAL BUTT JOINT AND HMA TAPER  
FOR MILLING AND RESURFACING



BUTT JOINT DETAIL



HMA TAPER DETAIL

TYPICAL BUTT JOINT AND HMA TAPER  
FOR RESURFACING ONLY

\*\*\* PC CONCRETE, HMA OR HMA RESURFACED PAVEMENT.

NOTES

- A: MAINLINE ROADWAYS AND MAJOR SIDE ROADS.
  - B: MINOR SIDE ROADS.
  - C: THE TEMP. RAMP SHALL BE CONSTRUCTED IMMEDIATELY UPON REMOVAL OF THE EXISTING HMA SURFACE.
  - D: THE BUTT JOINT SHALL BE CONSTRUCTED IMMEDIATELY PRIOR TO PLACING THE PROPOSED HMA COURSES.
  - E: TAPER THE TEMP. RAMP AT A RATE OF 3'-0" (900 mm) PER 1 INCH (25 mm) OF MILLING THICKNESS.
  - F: INSTALLATION AND REMOVAL OF THE 4'-6" (1.35 m) TEMP. RAMP IS INCLUDED IN COST OF HMA SURFACE REMOVAL - BUTT JOINT
  - G: SEE ARTICLE 406.08 AND 406.14 OF THE STANDARD SPECIFICATIONS FOR "HMA AND/OR PCC SURFACE REMOVAL, BUTT JOINT".
- \* SEE TYPICAL SECTIONS FOR MILLING THICKNESS.

\*\*\* 20'-0" (6.1 m) PER 1 (25) RESURFACING (NOTE "A")  
10'-0" (3.0 m) PER 1 (25) RESURFACING (NOTE "B")

ALL DIMENSIONS ARE IN INCHES (MILLIMETERS) UNLESS OTHERWISE SHOWN.

BASIS OF PAYMENT:

THE BUTT JOINT WILL BE PAID FOR AT THE CONTRACT UNIT PRICE PER SQUARE YARD (SQUARE METER) FOR "HOT-MIX ASPHALT SURFACE REMOVAL - BUTT JOINT" OR FOR "PORTLAND CEMENT CONCRETE SURFACE REMOVAL - BUTT JOINT".

REVISIONS	
NAME	DATE
M. DE YONG	6-13-90
M. DE YONG	7-3-90
M. DE YONG	3-27-92
R. SHAH	09/09/94
R. SHAH	10/25/94
A. ABBAS	03/21/97
M. GOMEZ	04/06/01
R. BORO	01/01/07

ILLINOIS DEPARTMENT OF TRANSPORTATION

BUTT JOINT AND  
HMA TAPER  
DETAILS

SCALE: VERT. NONE  
HORIZ. 1" = 10'  
PLOT DATE: 6/11/2007

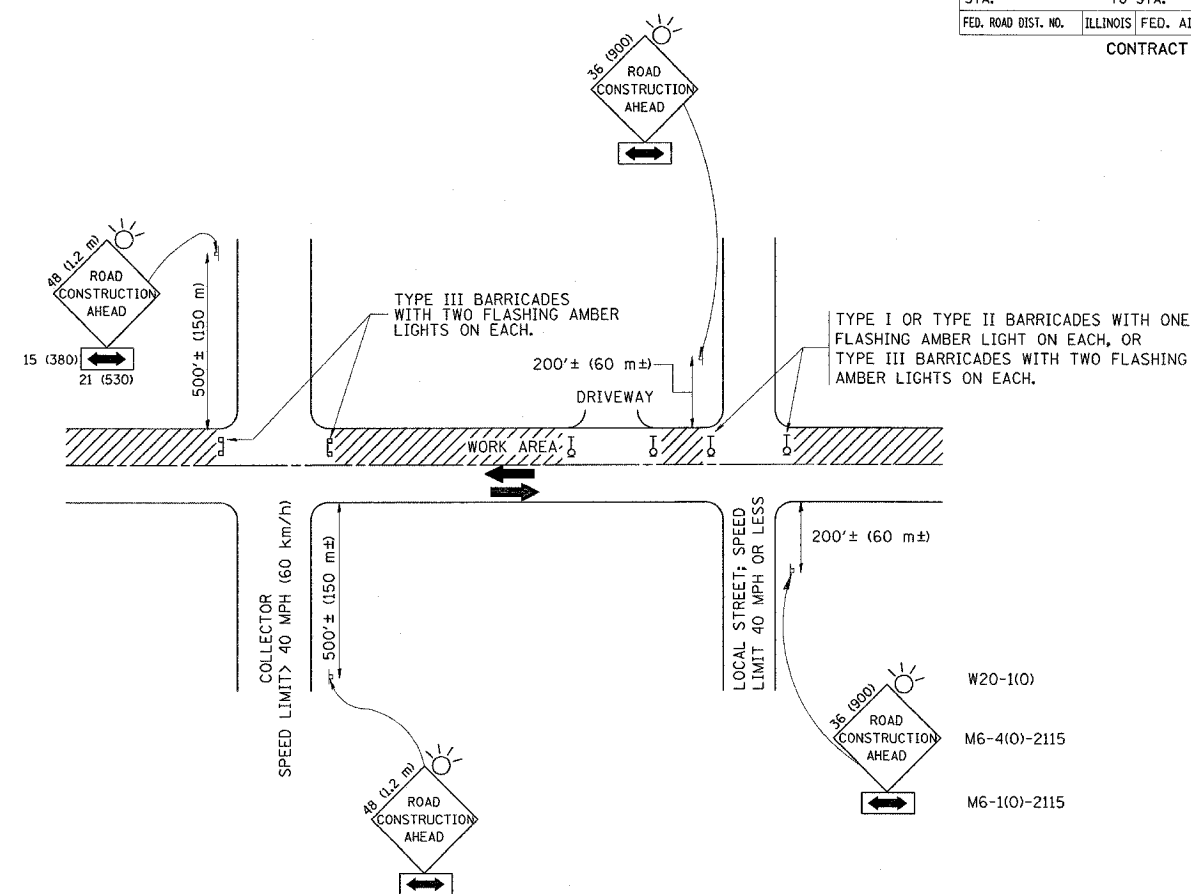
DRAWN BY  
CHECKED BY

BD400-05 (VI-BD32)  
REVISION DATE: 01/01/07

F.A.I. RTE.	SECTION	COUNTY	TOTAL SHEETS	SHEET NO.
55	99(1&2)RS-9	WILL	15	12

STA.	TO STA.
FED. ROAD DIST. NO.	ILLINOIS FED. AID PROJECT

CONTRACT NO. 60A58



### TRAFFIC CONTROL AND PROTECTION FOR SIDE ROADS, INTERSECTIONS, AND DRIVEWAYS

#### NOTES:

##### A. FOR NO LANE RESTRICTION ON THE SIDE ROAD OR DRIVEWAYS

1. SIDE ROAD WITH A SPEED LIMIT OF 40 MPH (60 km/h) OR LESS AS SHOWN ON THE DRAWING AND AS DIRECTED BY THE ENGINEER:

a) ONE ROAD CONSTRUCTION AHEAD SIGN 36 x 36 (900x900) WITH A FLASHER AND FLAG MOUNTED ON IT APPROXIMATELY 200' (60 m) IN ADVANCE OF THE MAIN ROUTE.

b) THE CLOSED PORTION OF THE MAIN ROUTE SHALL BE PROTECTED BY BLOCKING WITH TYPE I, TYPE II OR TYPE III BARRICADES, 1/3 OF THE CROSS SECTION OF THE CLOSED PORTION.

2. SIDE ROAD WITH A SPEED LIMIT GREATER THAN 40 MPH (60 km/h) AS SHOWN ON THE DRAWING AND AS DIRECTED BY THE ENGINEER:

a) ONE ROAD CONSTRUCTION AHEAD SIGN 48 x 48 (1.2 m x 1.2 m) WITH A FLASHER MOUNTED ON IT APPROXIMATELY 500' (150 m) IN ADVANCE OF THE MAIN ROUTE.

b) THE CLOSED PORTION OF THE MAIN ROUTE SHALL BE PROTECTED BY BLOCKING WITH TYPE III BARRICADES, 1/2 OF THE CROSS SECTION OF THE CLOSED PORTION.

3. WHEN THE SIDE ROAD LIES BETWEEN THE BEGINNING OF THE MAINLINE SIGNING AND THE WORK ZONE, A SINGLE HEADED ARROW (M6-1) SHALL BE USED IN LIEU OF THE DOUBLE HEADED ARROW (M6-4).

##### B. FOR A LANE CLOSURE ON A SIDE ROAD OR DRIVEWAY:

USE APPLICABLE PORTIONS OF THE TYPICAL APPLICATION OF TRAFFIC CONTROL DEVICES (STD. 701501, STD. 701606 OR THE APPROPRIATE STANDARD). THE SPACING OF SIGNS AND BARRICADES SHALL BE ADJUSTED FOR FIELD CONDITIONS AS DIRECTED BY THE ENGINEER. THE DIRECTIONAL ARROW SHALL BE COVERED OR REMOVED WHEN NO LONGER CONSISTENT WITH THE SIDE ROAD LANE CLOSURE.

C. ADVANCE WARNING SIGNS ARE TO BE OMITTED ON DRIVEWAY UNLESS OTHERWISE NOTED.

D. THE TRAFFIC CONTROL AND PROTECTION FOR SIDE ROADS, INTERSECTIONS, AND DRIVEWAYS SHALL BE INCIDENTAL TO THE COST OF SPECIFIED TRAFFIC CONTROL STANDARDS OR ITEMS.

All dimensions are in millimeters (inches) unless otherwise shown.

REVISIONS	
NAME	DATE
LHA	6/89
T. RAMMACHER	09/08/94
J. OBERLE	10/18/95
A. HOUSEH	03/06/96
A. HOUSEH	10/15/96
T. RAMMACHER	01/06/00

ILLINOIS DEPARTMENT OF TRANSPORTATION  
**TRAFFIC CONTROL AND PROTECTION  
 FOR  
 SIDE ROADS, INTERSECTIONS, AND  
 DRIVEWAYS**

SCALE:   
 DATE: 6/11/2007

DRAWN BY   
 CHECKED BY

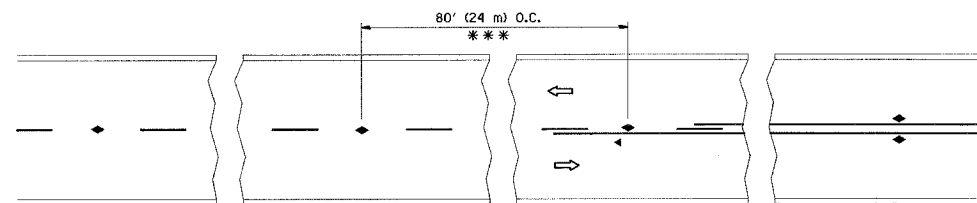
TC-10

REVISION DATE: 01/06/00

PLOT DATE = 6/11/2007  
 FILE NAME = c:\nrc\projects\107685\design\en.dgn  
 PLOT SCALE = 60.0002 / IN.  
 USER NAME = steedpa

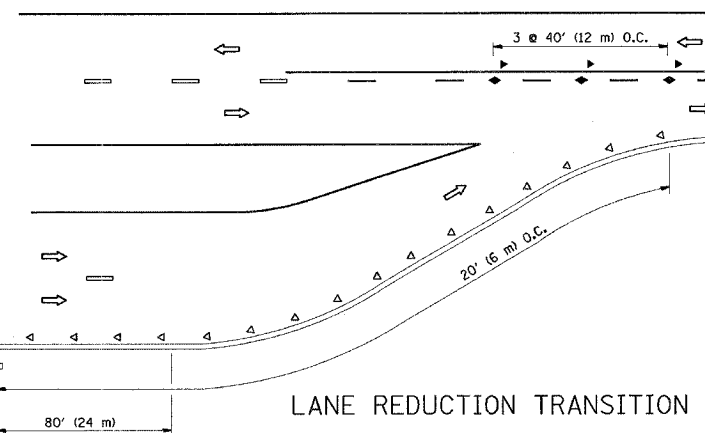
F.A.L. RTE.	SECTION	COUNTY	TOTAL SHEETS	SHEET NO.
55	991&2/RS-9	WILL	15	13
STA.		TO STA.		
FED. ROAD DIST. NO.	ILLINOIS	FED. AID PROJECT		

CONTRACT NO. 60A58

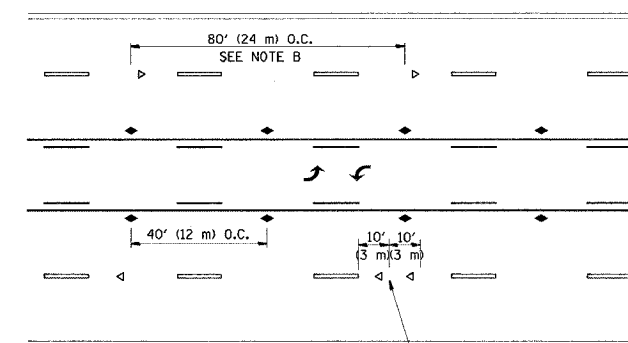


\*\*\* REDUCE TO 40' (12 m) O.C. ON CURVES WITH POSTED OR ADVISORY SPEED 45 M.P.H. (70 km/h) OR LESS.

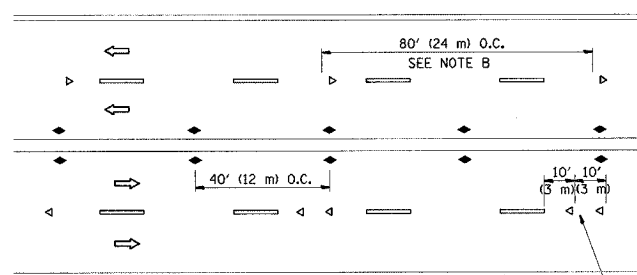
TWO-LANE/TWO-WAY



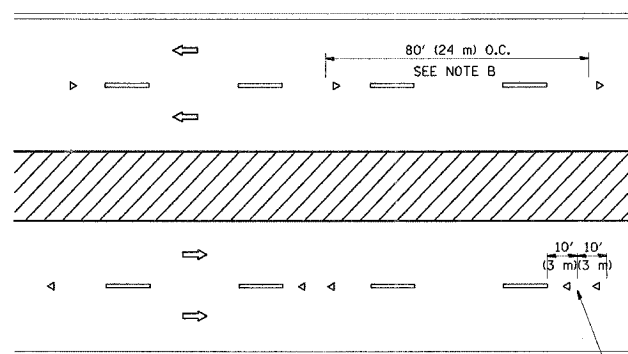
LANE REDUCTION TRANSITION



TWO-WAY LEFT TURN



MULTI-LANE/UNDIVIDED



MULTI-LANE/DIVIDED

GENERAL NOTES

1. MARKERS USED WITH DASHED LINES SHALL BE CENTERED IN THE GAP BETWEEN SEGMENTS.
2. MARKERS USED ADJACENT TO SOLID LINES SHALL BE OFFSET 2 TO 3 (50 TO 75) TOWARD TRAFFIC AS SHOWN.
3. MARKERS THROUGH TANGENTS LESS THAN 500' (150 m) IN LENGTH BETWEEN CURVES SHALL BE INSTALLED AT THE LESSER OF THE TWO CURVE SPACINGS.

LANE MARKER NOTES

- A. USE DOUBLE LANE LINE MARKERS SPACED AS SHOWN.
- B. REDUCE TO 40' (12 m) O.C. ON CURVES WHERE ADVISORY SPEEDS ARE 10 M.P.H. (20 km/h) LOWER THAN POSTED SPEEDS.

SYMBOLS

- YELLOW STRIPE
- WHITE STRIPE
- ◀ ONE-WAY AMBER MARKER
- ◀ ONE-WAY CRYSTAL MARKER (W/O)
- ◆ TWO-WAY AMBER MARKER

DESIGN NOTES

1. DOUBLE LANE LINE MARKERS SHALL BE USED UNLESS SPECIFIED OTHERWISE.
2. EXCEPT AS SHOWN ON THE LANE REDUCTION TRANSITION AND FREEWAY EXIT RAMP DETAIL, MARKERS ARE NOT TO BE SPECIFIED ON RIGHT EDGE LINES.
3. THE EXACT MARKER LIMITS, SPACING, AND COLOR SHOULD BE INCLUDED IN THE PLANS.
4. MARKERS SHOULD NOT BE USED ALONGSIDE CURBS EXCEPT FOR EXTREMELY SHORT SECTIONS OF CURBS WHERE NOT MORE THAN TWO MARKERS WOULD BE INVOLVED.

All dimensions are in millimeters (Inches) unless otherwise shown.

REVISIONS	
NAME	DATE
T. RAMMACHER	09-19-94
T. RAMMACHER	03-12-99
T. RAMMACHER	01-06-00

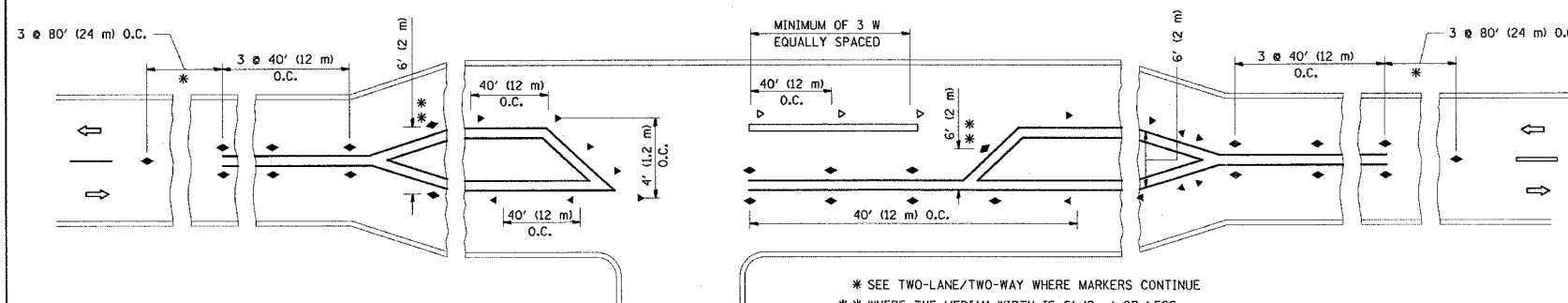
ILLINOIS DEPARTMENT OF TRANSPORTATION  
TYPICAL APPLICATIONS  
RAISED REFLECTIVE PAVEMENT  
MARKERS (SNOW-PLOW RESISTANT)

SCALE: NONE  
DATE: 6/11/2007

DRAWN BY CADD  
CHECKED BY  
TC-11

REVISION DATE: 01/06/00

PLOT DATE = 6/11/2007  
FILE NAME = c:\projects\107686\design\_06.dgn  
PLOT SCALE = 60,000 / 1 IN.  
USER NAME = sreedha

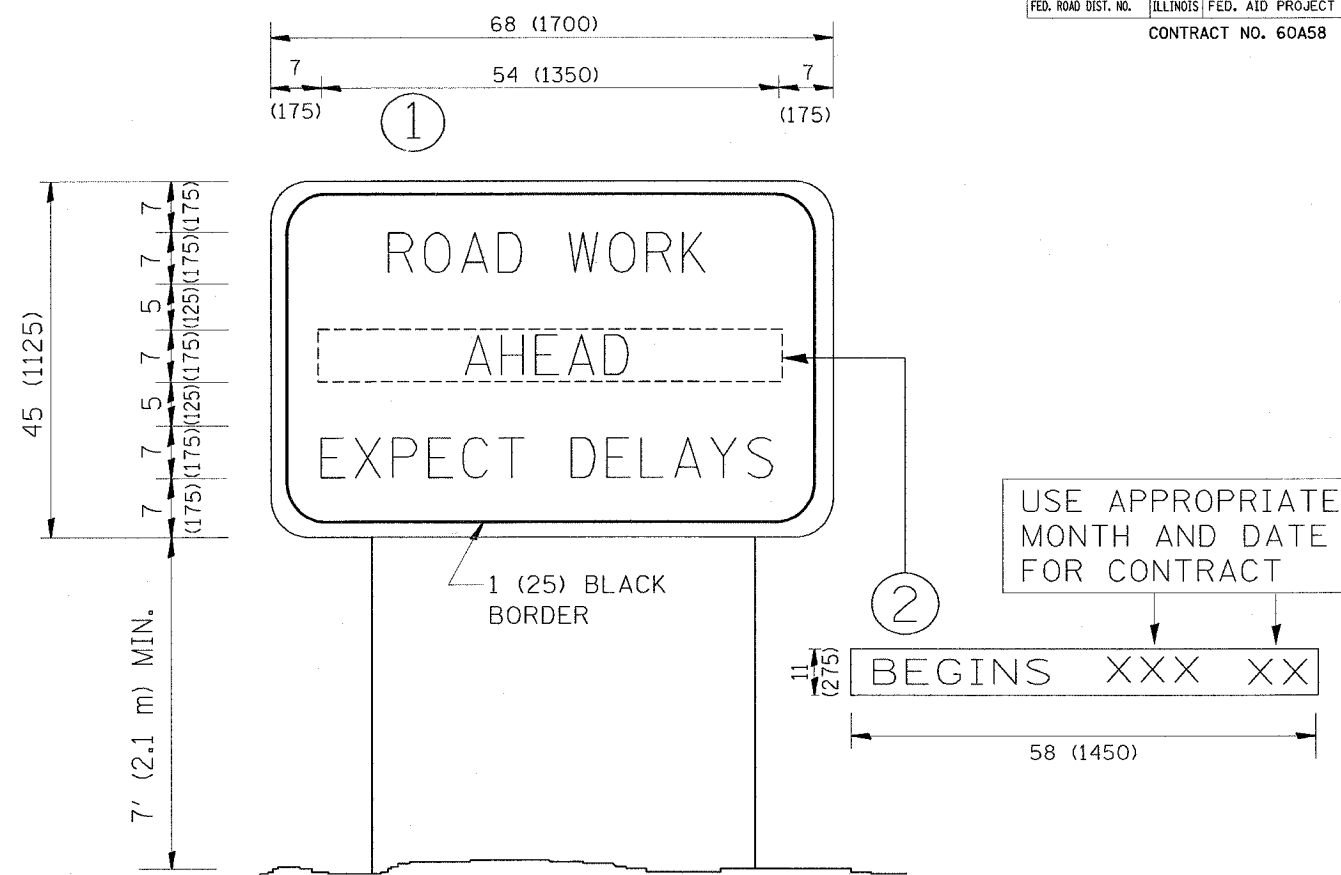


LEFT TURN

\* SEE TWO-LANE/TWO-WAY WHERE MARKERS CONTINUE  
\*\* WHERE THE MEDIAN WIDTH IS 6' (2 m) OR LESS USE TWO-WAY MARKERS.



F.A.I. RTE.	SECTION	COUNTY	TOTAL SHEETS	SHEET NO.
55	99(1&2)RS-9	WILL	15	15
STA.		TO STA.		
FED. ROAD DIST. NO.	ILLINOIS FED. AID PROJECT			
CONTRACT NO. 60A58				



NOTES:

1. USE BLACK LETTERING ON ORANGE BACKGROUND.
2. ERECT SIGNS IN ADVANCE OF THE LOCATION FOR THE "ROAD CONSTRUCTION AHEAD" SIGN AT LOCATIONS AS DIRECTED BY THE ENGINEER.
3. ERECT SIGN ① WITH INSTALLED PANEL ② ONE WEEK PRIOR TO THE START OF CONSTRUCTION.
4. REMOVE PANEL ② SOON AFTER THE START OF CONSTRUCTION.
5. SEE SPECIAL PROVISION FOR "TEMPORARY INFORMATION SIGNING" FOR ADDITIONAL INFORMATION.
6. ONE SIGN ASSEMBLY EQUALS 25.70 SQ. FT. (2.3 SQ. M.)
7. SHALL BE PAID FOR AS TEMPORARY INFORMATION SIGNING.

ALL DIMENSIONS ARE IN INCHES (MILLIMETERS) UNLESS OTHERWISE SHOWN.

REVISIONS	
NAME	DATE
R. MIRS	9-15-97
R. MIRS	12-11-97
T. RAMMACHER	2-2-99
C. JUCIUS	1-31-07

ILLINOIS DEPARTMENT OF TRANSPORTATION

ARTERIAL ROAD  
INFORMATION SIGN

SCALE: NONE

DRAWN BY DESIGN

CHECKED BY

TC22