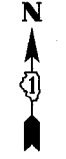
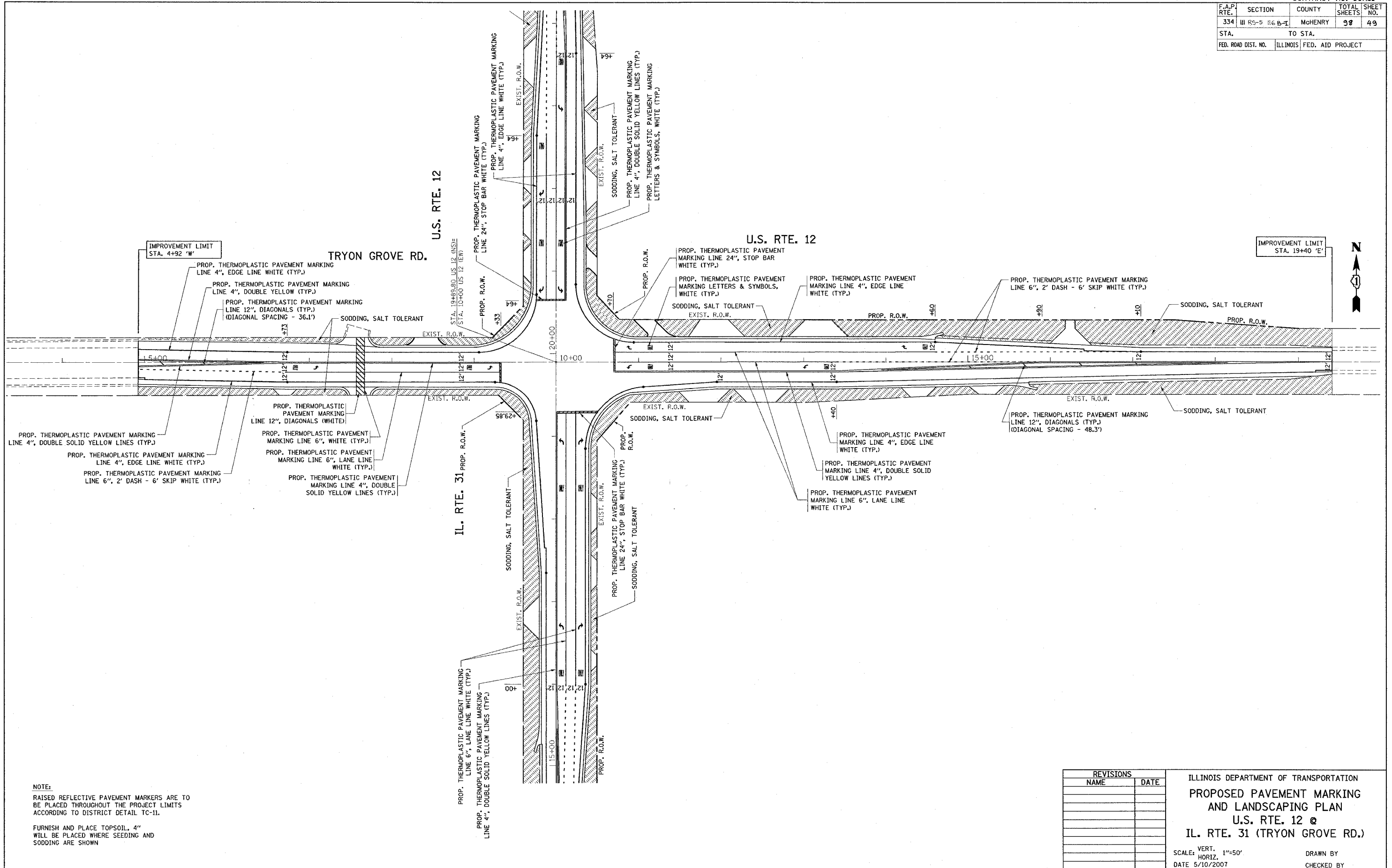


*REF-pmk03

CONTRACT NO. 60A91

F.A.P. RTE.	SECTION	COUNTY	TOTAL SHEETS	SHEET NO.
334	116 B-1	MOHENRY	98	49
STA.		TO STA.		
FED. ROAD DIST. NO.		ILLINOIS FED. AID PROJECT		



IMPROVEMENT LIMIT
STA. 4+92 'W'

IMPROVEMENT LIMIT
STA. 19+40 'E'

NOTE:
RAISED REFLECTIVE PAVEMENT MARKERS ARE TO BE PLACED THROUGHOUT THE PROJECT LIMITS ACCORDING TO DISTRICT DETAIL TC-11.

FURNISH AND PLACE TOPSOIL, 4" WILL BE PLACED WHERE SEEDING AND SODDING ARE SHOWN

REVISIONS	
NAME	DATE

ILLINOIS DEPARTMENT OF TRANSPORTATION
PROPOSED PAVEMENT MARKING AND LANDSCAPING PLAN
U.S. RTE. 12 @
IL. RTE. 31 (TRYON GROVE RD.)

SCALE: VERT. 1"=50'
HORIZ. 1"=50'
DATE 5/10/2007
DRAWN BY
CHECKED BY

PLOT DATE = 5/10/2007
FILE NAME = c:\projects\60a91\60a91.dgn
PLOT SCALE = 1/8"=1'-0"
USER NAME = baum-dl