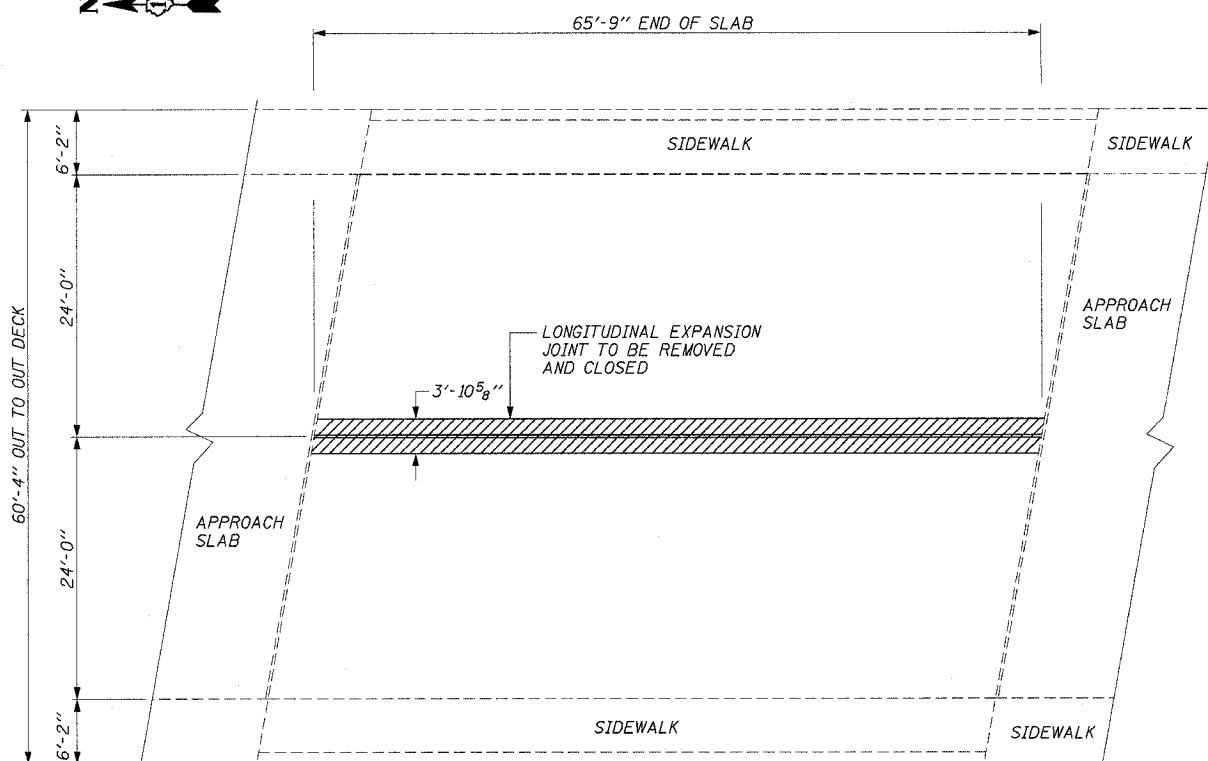
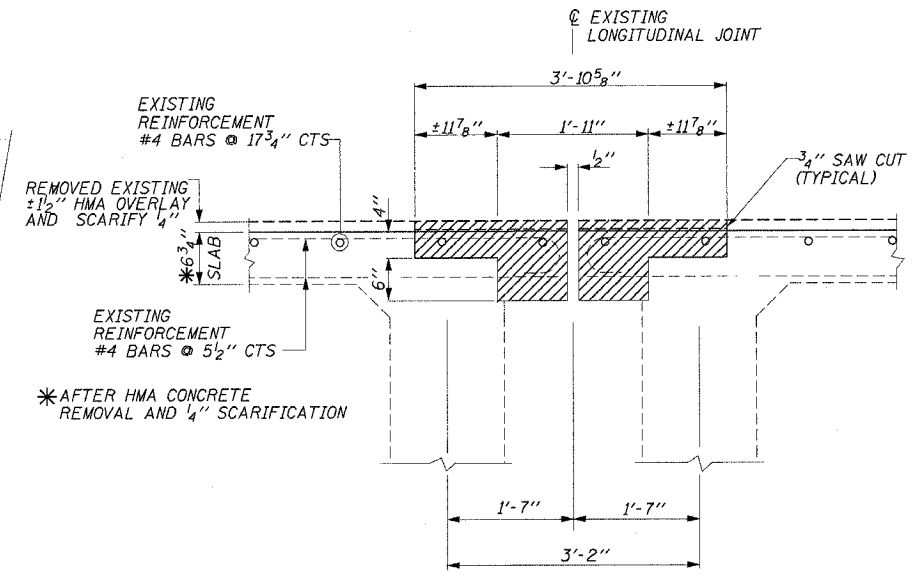


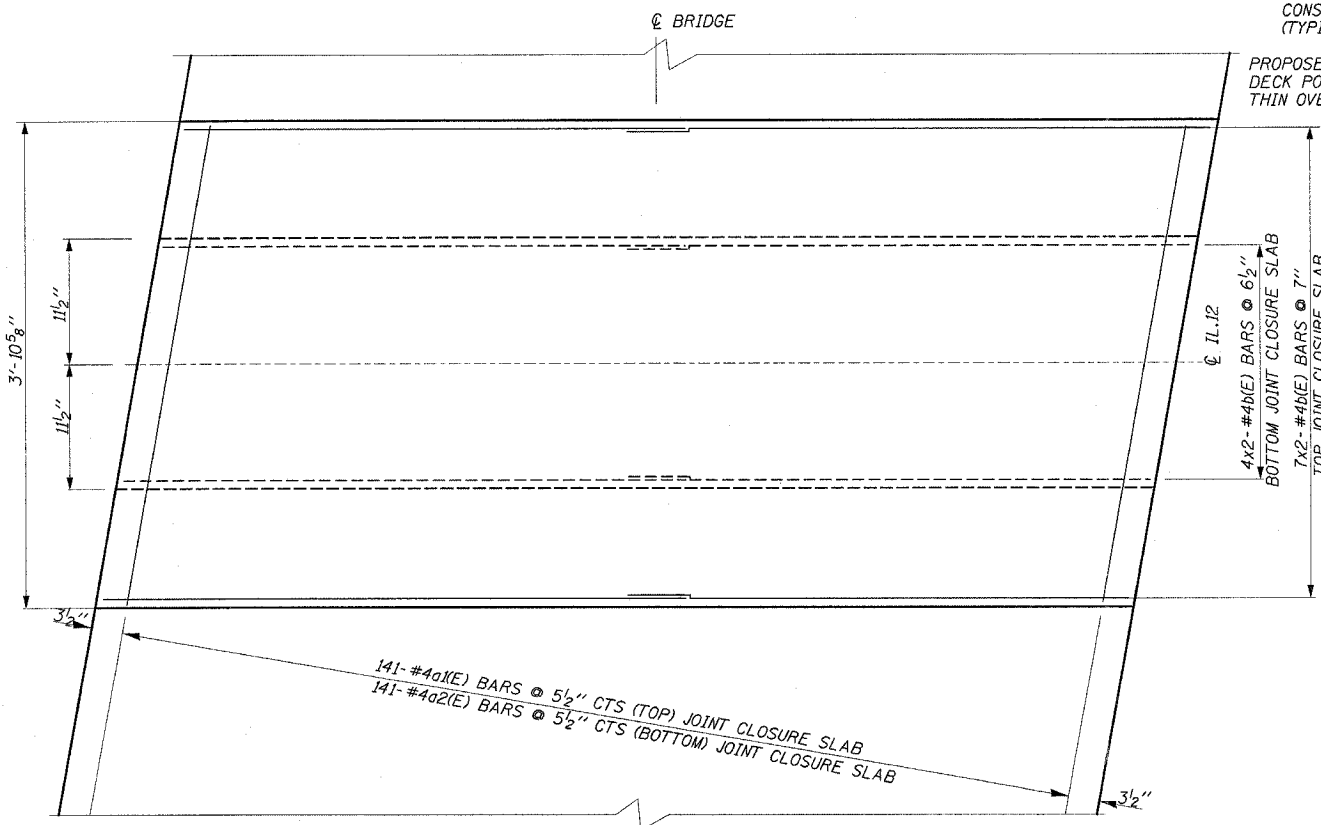
F.A.P. RTE.	SECTION	COUNTY	TOTAL SHEETS	SHEET NO.
334	**	McHENRY	98	65
STA.		TO STA.		
FED. ROAD DIST. NO.		ILLINOIS FED. AID PROJECT		
** 111 RS-5 & 116 B-1		CONTRACT NO. 60A91		



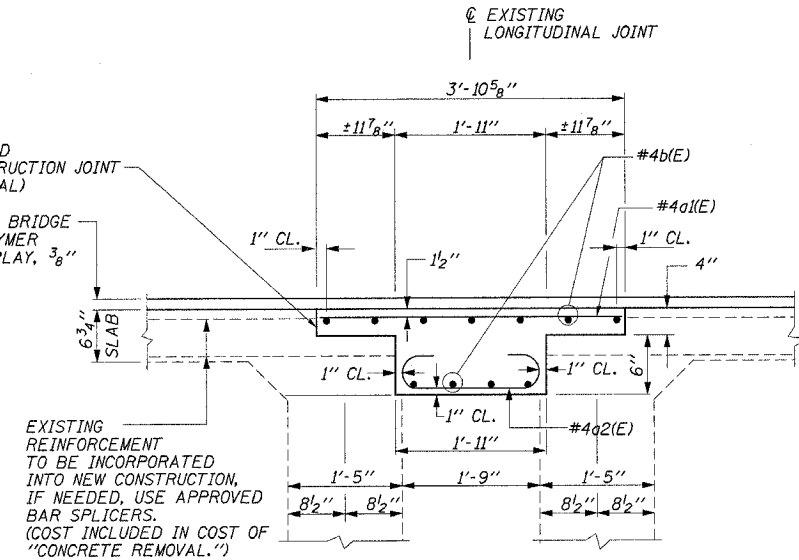
EXPANSION JOINT



REMOVE EXISTING LONGITUDINAL EXPANSION JOINT
HATCHED AREA INDICATES REMOVAL



REINFORCEMENT PLAN
PROPOSED LONGITUDINAL EXPANSION JOINT CLOSURE SLAB



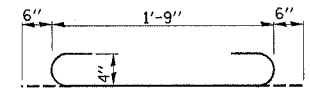
PROPOSED LONGITUDINAL EXPANSION JOINT CLOSURE SLAB

BILL OF MATERIALS

NO.	SIZE	LENGTH	SHAPE
a1(E)	141 #4	3'-9"	—
a2(E)	141 #4	2'-9"	U
b (E)	22 #4	34'-5"	—
REINFORCEMENT BARS (EPOXY COATED)			POUND
CONCRETE SUPERSTRUCTURE			CU. YD.
CONCRETE REMOVAL			CU. YD.

REINFORCEMENT BARS DESIGNATED (E) SHALL BE EPOXY COATED

NOTE:
BARS INDICATED THUS 4x2 - #4 etc INDICATES 4 LINES OF BARS WITH 2 LENGTHS PER LINE.



BARS a2(E)

BAR LAP TABLE

SIZE	LENGTH
#4	1'-8"

5/10/2007
 c:\projects\struct\nipper.sink_english.dgn
 DISTRICT ONE - DESIGN
 PLAN PREPARATION ENGINEER JOHN FORTMANN / RUSS SINHA (847) 705-4209 / ATTENTION MARK V. TINIAKOS (847) 705-4266

REVISIONS		ILLINOIS DEPARTMENT OF TRANSPORTATION U.S. ROUTE 12 BRIDGE OVER NORTH BRANCH NIPPERSINK CREEK LONGITUDINAL JOINT REMOVAL AND REPLACEMENT SCALE: NONE S.N. 056-0017 DRAWN BY: MVT DATE: APRIL, 2004 CHECKED BY: RSS
NAME	DATE	