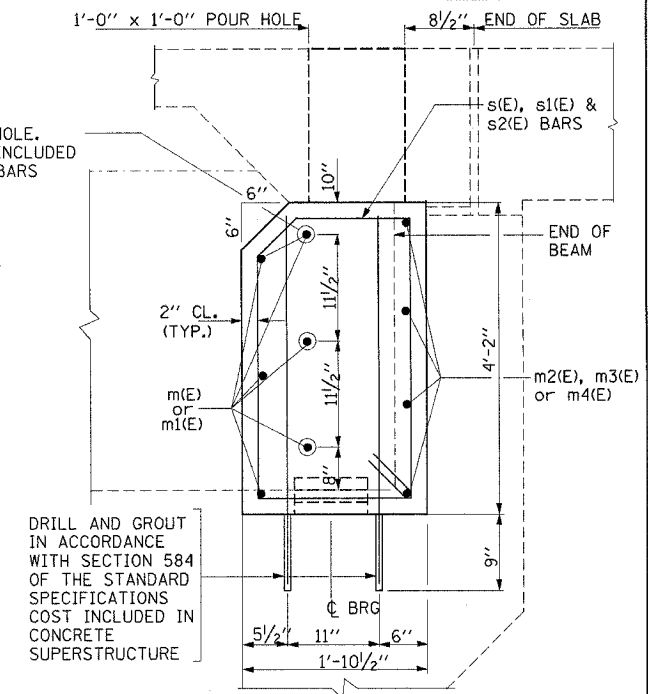
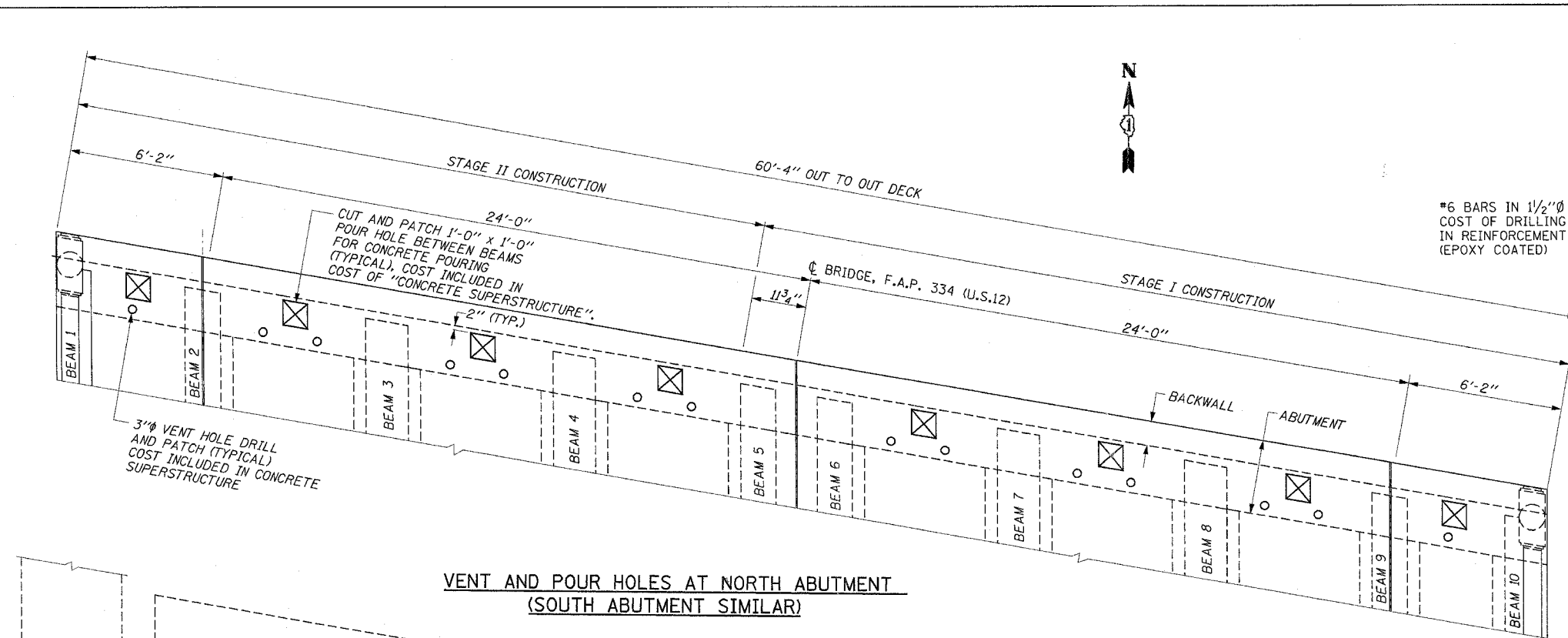
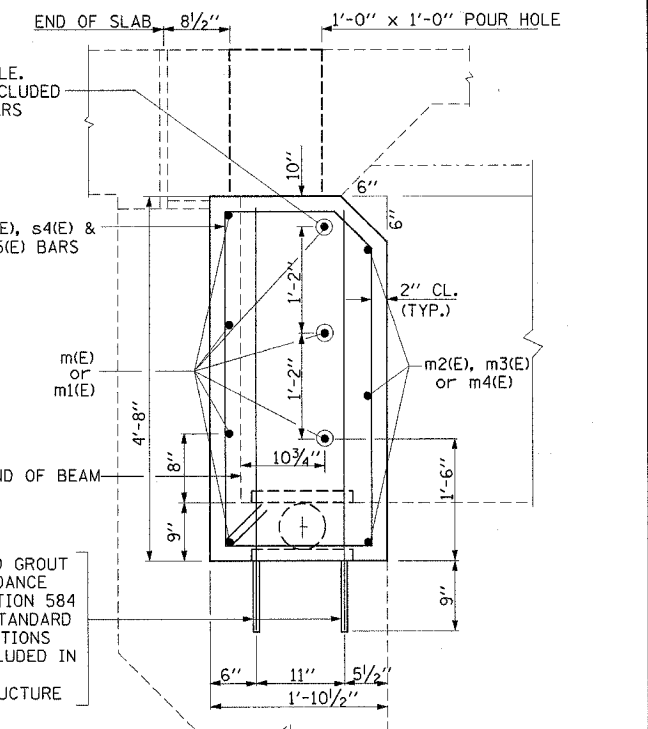
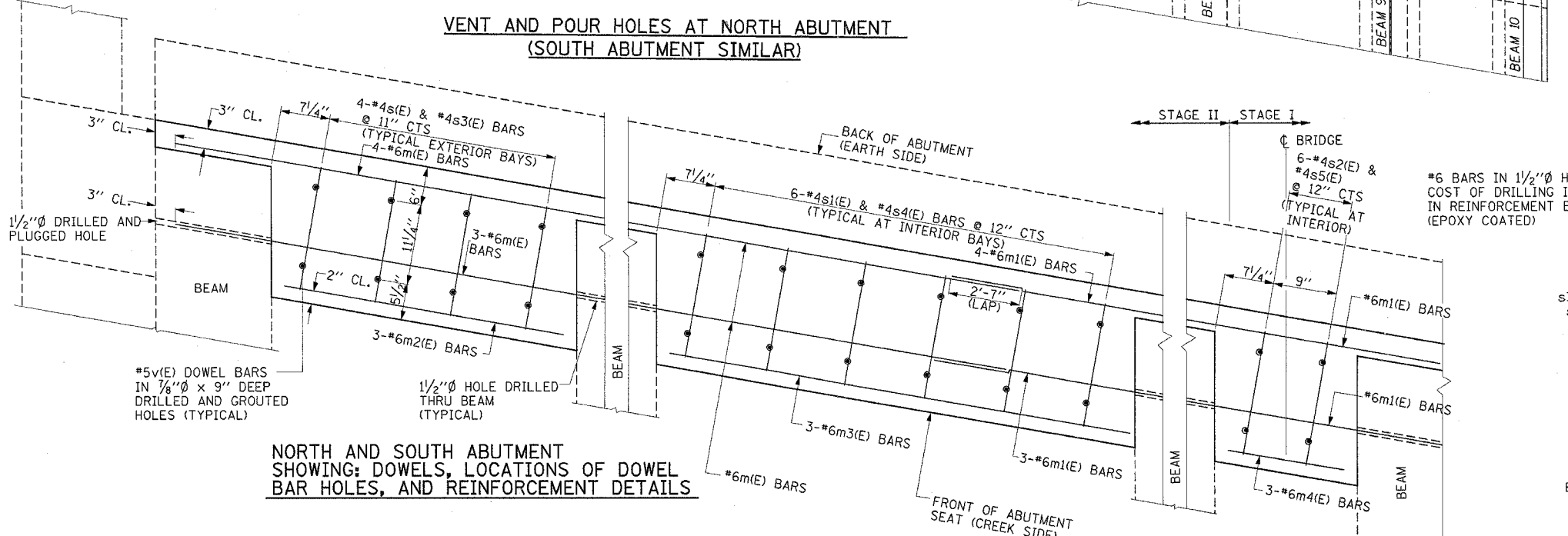


F.A.P. RTE.	SECTION	COUNTY	TOTAL SHEETS	SHEET NO.
334	**	McHENRY	98	66
STA.	TO STA.			
FED. ROAD DIST. NO.	ILLINOIS FED. AID PROJECT			
** 111 RS-5 & 116 B-1	CONTRACT NO. 60A91			

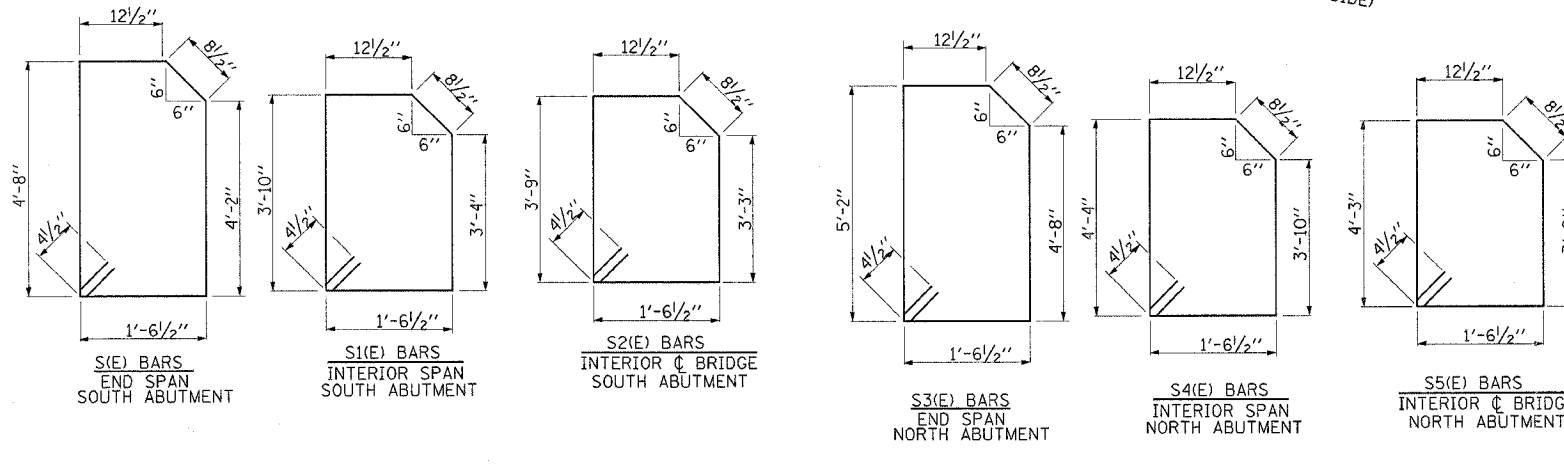
SHEET S5 OF S10



SECTION C-C THRU SOUTH ABUTMENT (SEE SHEET S6 OF S10)



SECTION D-D THRU NORTH ABUTMENT (SEE SHEET S6 OF S10)



REVISIONS	NAME	DATE
ILLINOIS DEPARTMENT OF TRANSPORTATION U.S. ROUTE 12 BRIDGE OVER NORTH BRANCH NIPPERSINK CREEK INTEGRAL ABUTMENT S.N. 056-0017		
SCALE: NONE		DRAWN BY: MVT
DATE: APRIL, 2004		CHECKED BY: RSS

5/10/2007 c:\projects\structure\11\11nippersink_englsh.dgn
DISTRICT ONE - DESIGN
PLAN PREPARATION ENGINEER JOHN FORTMANN / RUSS SINHA (847) 705-4209 / ATTENTION MARK V. TINIAKOS (847) 705-4266