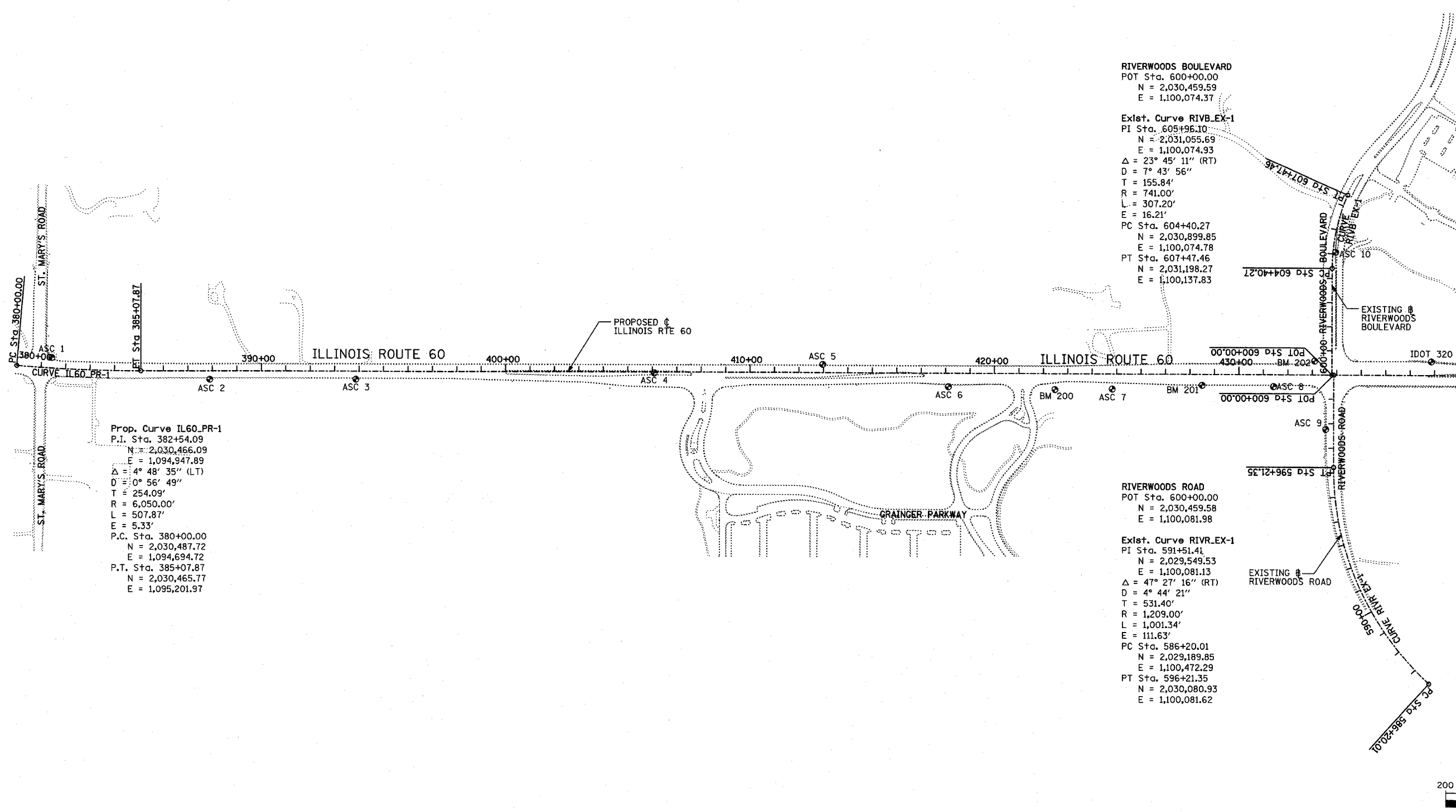


F.A.P. RTE.	SECTION	COUNTY	TOTAL SHEETS	SHEET NO.
335	119R-2	LAKE	439	37
STA. 432+83.12 TO STA. 470+56.84				
FED. ROAD DIST. NO.	ILLINOIS	FED. AID PROJECT		

60B01



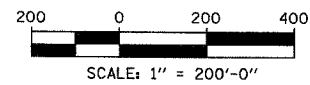
Prop. Curve IL60\_PR-1  
 P.I. Sta. 382+54.09  
 N = 2,030,466.09  
 E = 1,094,947.89  
 $\Delta = 4^\circ 48' 35''$  (LT)  
 $D = 0^\circ 56' 49''$   
 T = 254.09'  
 R = 6,050.00'  
 L = 507.87'  
 E = 5.33'  
 P.C. Sta. 380+00.00  
 N = 2,030,487.72  
 E = 1,094,694.72  
 P.T. Sta. 385+07.87  
 N = 2,030,465.77  
 E = 1,095,201.97

RIVERWOODS BOULEVARD  
 POT Sta. 600+00.00  
 N = 2,030,459.59  
 E = 1,100,074.37

Exist. Curve RIVB\_EX-1  
 PI Sta. 605+96.10  
 N = 2,031,055.69  
 E = 1,100,074.93  
 $\Delta = 23^\circ 45' 11''$  (RT)  
 $D = 7^\circ 43' 56''$   
 T = 155.84'  
 R = 741.00'  
 L = 307.20'  
 E = 16.21'  
 PC Sta. 604+40.27  
 N = 2,030,899.85  
 E = 1,100,074.78  
 PT Sta. 607+47.46  
 N = 2,031,198.27  
 E = 1,100,137.83

RIVERWOODS ROAD  
 POT Sta. 600+00.00  
 N = 2,030,459.58  
 E = 1,100,081.98

Exist. Curve RIVR\_EX-1  
 PI Sta. 591+51.41  
 N = 2,029,549.53  
 E = 1,100,081.13  
 $\Delta = 47^\circ 27' 16''$  (RT)  
 $D = 4^\circ 44' 21''$   
 T = 531.40'  
 R = 1,209.00'  
 L = 1,001.34'  
 E = 111.63'  
 PC Sta. 586+20.01  
 N = 2,029,189.85  
 E = 1,100,472.29  
 PT Sta. 596+21.35  
 N = 2,030,080.93  
 E = 1,100,081.62



REVISIONS	
NAME	DATE

ILLINOIS DEPARTMENT OF TRANSPORTATION  
 ILLINOIS RTE 60 OVER I-94  
 ALIGNMENT AND TIES  
 SHEET 1 OF 2

SCALE: 1"=200'-0"  
 DATE: MAY 8, 2007  
 DRAWN BY: ASC  
 CHECKED BY: MPG

TYLIN INTERNATIONAL

P:\60245811-60\1199\60B01.dwg 5/7/2007 8:46:46 AM