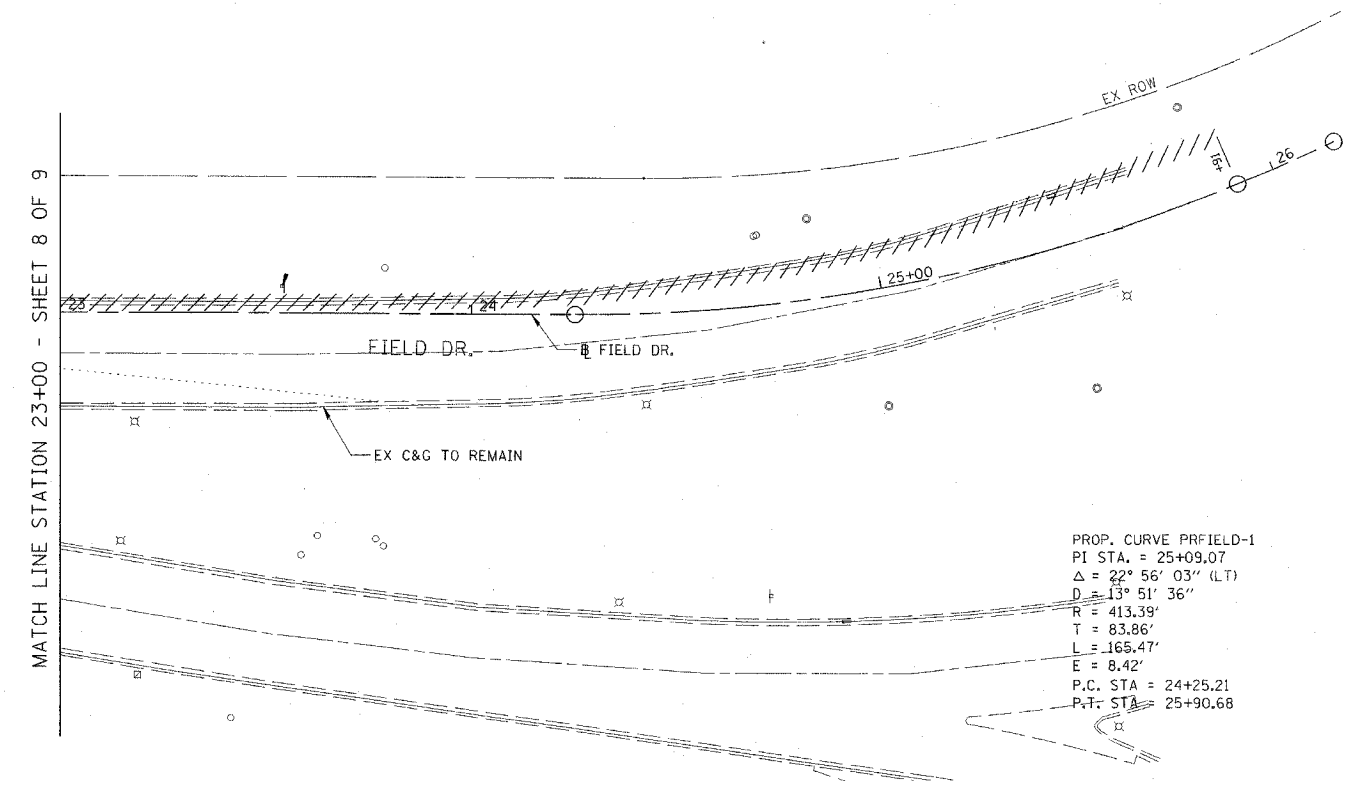
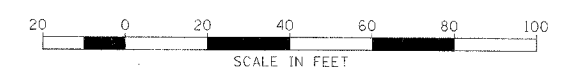


F.A.P. RTE.	SECTION	COUNTY	TOTAL SHEETS	SHEET NO.
335	119R-2	LAKE	439	54
STA. 432+63.12		TO STA. 470+56.84		
FED. ROAD DIST. NO.		ILLINOIS	FED. AID PROJECT	

60B01



PROP. CURVE PRFIELD-1  
 PI STA. = 25+09.07  
 $\Delta = 22^\circ 56' 03''$  (LT)  
 $D = 13^\circ 51' 36''$   
 $R = 413.39'$   
 $T = 83.86'$   
 $L = 165.47'$   
 $E = 8.42'$   
 P.C. STA = 24+25.21  
 P.T. STA = 25+90.68



- LEGEND:
- CONC CURB & GUTTER REMOVAL
  - PAVEMENT REMOVAL
  - ISLAND REMOVAL
  - RELOCATE EXISTING ROADSIDE FEATURE
  - TREE REMOVAL
  - REMOVAL

**CB** CHRISTOPHER B. BURKE ENGINEERING LTD.  
 6675 West Higgins Road, Suite 600  
 Rosemont, Illinois 60018  
 (847) 823-6500

REVISIONS	
NAME	DATE

ILLINOIS DEPARTMENT OF TRANSPORTATION  
 ILLINOIS RTE 60 OVER I-94  
 FIELD DRIVE  
 EXISTING CONDITIONS AND REMOVAL  
 STA. 23+00.00 TO STA. 26+16.26  
 SHEET 9 OF 9

SCALE: 1"=20'  
 DATE: MAY 8, 2007

DRAWN BY: GT  
 CHECKED BY: MCW

W:\LakeForest\03192\CIVIL\03192\_PFIELD\R101A  
 5/27/2007 9:41:27 AM