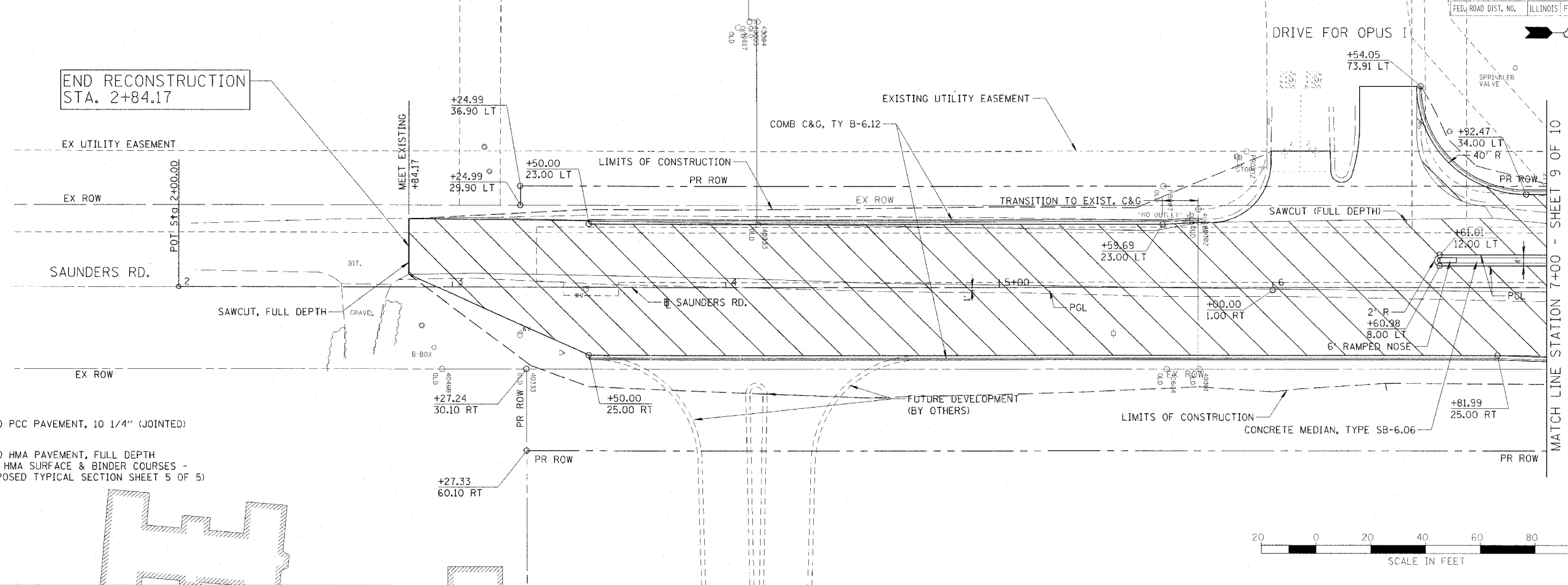
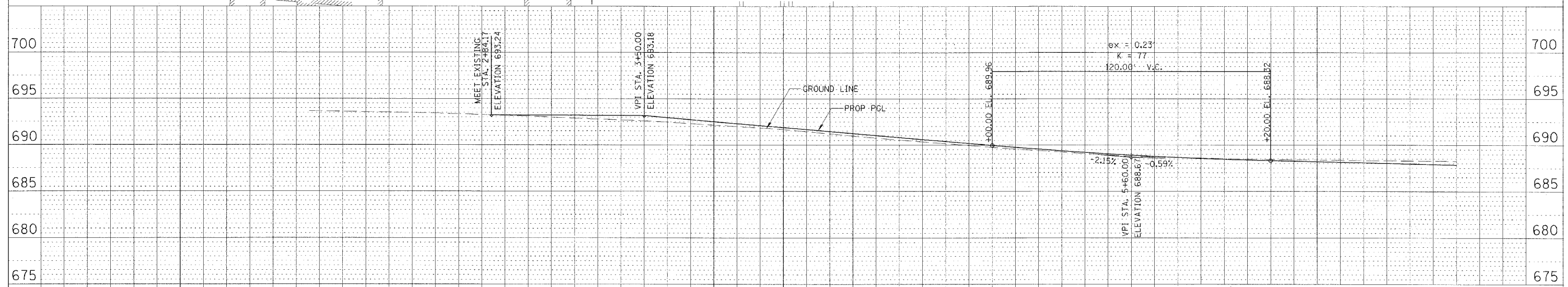
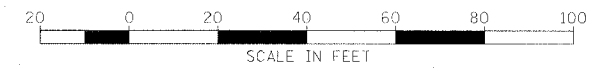


F.A.P. RTI.	SECTION	COUNTY	TOTAL SHEETS	SHEET NO.
335	119R-2	LAKE	439	62
STA. 432+83.12		TO STA. 470+56.84		
FED. ROAD DIST. NO.		ILLINOIS FED. AID PROJECT		



- LEGEND:
- PROPOSED PCC PAVEMENT, 10 1/4" (JOINTED)
 - PROPOSED HMA PAVEMENT, FULL DEPTH (PAID AS HMA SURFACE & BINDER COURSES - SEE PROPOSED TYPICAL SECTION SHEET 5 OF 5)



688.53	688.46	688.35	688.15	688.28	687.85
6+00		6+50		7+00	
693.50	693.12	692.60	691.84	690.76	689.96
2+50	3+00	3+50	4+00	4+50	5+00
688.92	689.05				

REVISIONS	
NAME	DATE

ILLINOIS DEPARTMENT OF TRANSPORTATION
 ILLINOIS RTE 60 OVER I-94
 SAUNDERS ROAD
 PROPOSED PLAN AND PROFILE
 STA. 2+00.00 TO STA. 7+00.00
 SHEET 8 OF 10

1"=5' VERT.
 SCALE: 1"=20' HORZ.
 DATE: MAY 8, 2007

DRAWN BY: GT
 CHECKED BY: MCW

DATE	BY

DATE	BY

CHRISTOPHER B. BURKE ENGINEERING LTD.
 2575 West Higgins Road, Suite 800
 Rosemont, Illinois 60018
 (847) 823-0500

6/8/2007 8:23:53 AM