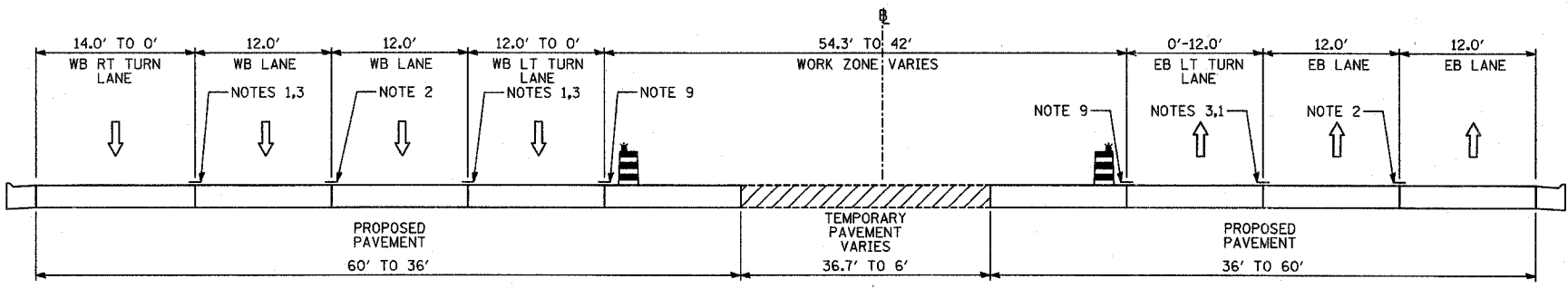
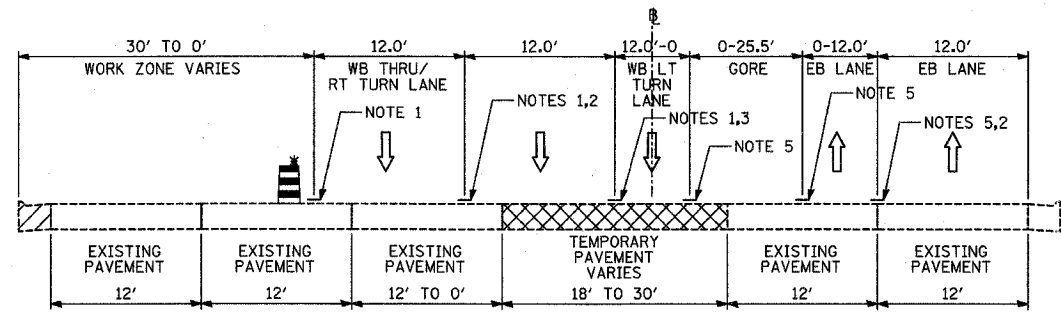


F.A.P. RTE.	SECTION	COUNTY	TOTAL SHEETS	SHEET NO.
335	119R-2	LAKE	439	81
STA. 432+83.12		TO STA. 470+56.84		
FED. ROAD DIST. NO.		ILLINOIS FED. AID PROJECT		

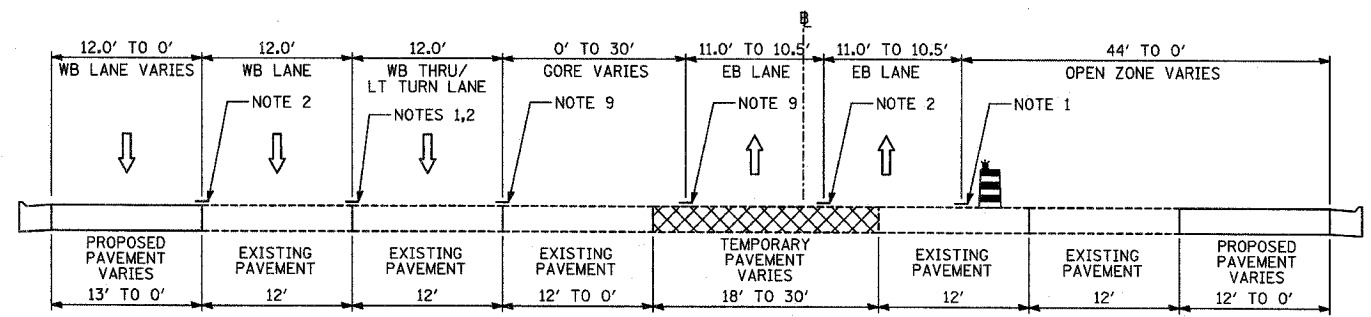
60B01



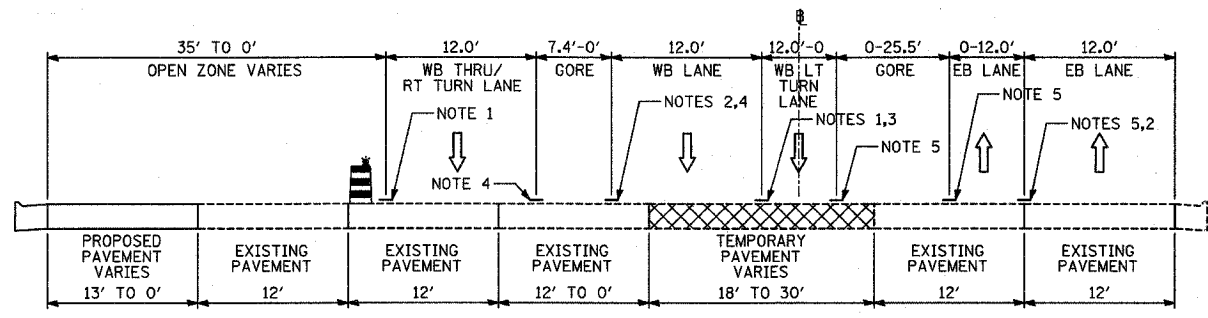
R-R
STAGE 5: IL-60; STA. 451+67 TO STA. 458+93



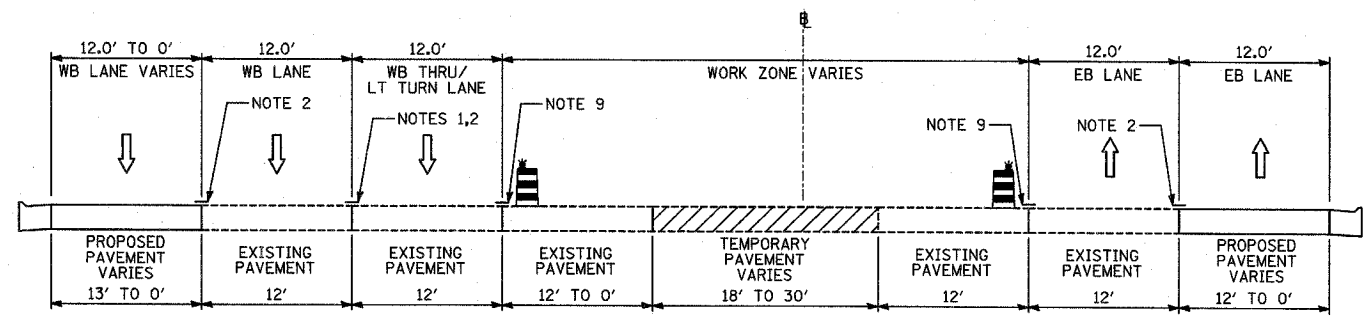
S-S
STAGE 1: IL-60; STA. 460+93 TO STA. 469+50



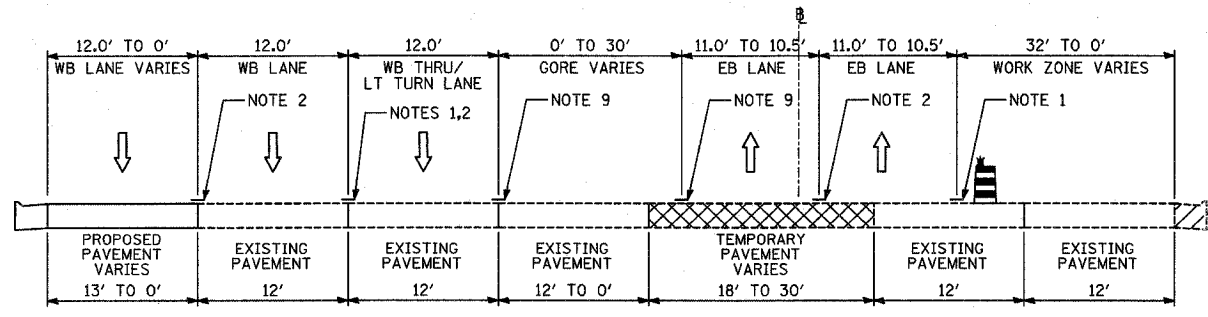
V-V
STAGES 3A & 4: IL-60; STA. 460+93 TO STA. 469+50



T-T
STAGES 1A & 2: IL-60; STA. 460+93 TO STA. 469+50



W-W
STAGE 5: IL-60; STA. 460+93 TO STA. 469+50



U-U
STAGE 3: IL-60; STA. 460+93 TO STA. 469+50

- NOTES:**
- 1 - TEMPORARY PAVEMENT MARKING-LINE 4" (SOLID WHITE)
 - 2 - TEMPORARY PAVEMENT MARKING-LINE 4" (10'-30' SKIP-DASH WHITE)
 - 3 - TEMPORARY PAVEMENT MARKING-LINE 4" (2'-6" SKIP-DASH WHITE)
 - 4 - TEMPORARY PAVEMENT MARKING-LINE 8" (SOLID WHITE)
 - 5 - TEMPORARY PAVEMENT MARKING-LINE 4" (SOLID DOUBLE YELLOW)
 - 6 - EXISTING PAVEMENT MARKING, (SOLID WHITE)
 - 7 - EXISTING PAVEMENT MARKING, (SKIP-DASH WHITE)
 - 8 - EXISTING PAVEMENT MARKING, (SOLID DOUBLE YELLOW)
 - 9 - TEMPORARY PAVEMENT MARKING-LINE 4" (SOLID YELLOW)
 - 10 - EXISTING PAVEMENT MARKING, (SOLID YELLOW)
- LEGEND:**
- TEMPORARY CONCRETE BARRIER (WITH REFLECTORS ON TOP AND SIDE FACING TRAFFIC)
 - TRAFFIC MOVEMENT
 - DRUM WITH MONO-DIRECTIONAL STEADY BURNING LIGHT
 - EXISTING BRIDGE PARAPET (WITH REFLECTORS ON TOP AND SIDE FACING TRAFFIC)
 - PAVEMENT REMOVAL AREA
 - TEMPORARY PAVEMENT

REVISIONS	
NAME	DATE

ILLINOIS DEPARTMENT OF TRANSPORTATION
ILLINOIS RTE 60 OVER I-94
MAINTENANCE OF TRAFFIC
TYPICAL SECTIONS AND DETAILS
SHEET 4 OF 7

SCALE: NO SCALE
DATE: MAY 8, 2007

DRAWN BY: RTM
CHECKED BY: MPG

TYLIN INTERNATIONAL

P:\60245811-60N\road\60mtrts_sht04.dgn 05/02/2007 10:24:27 AM