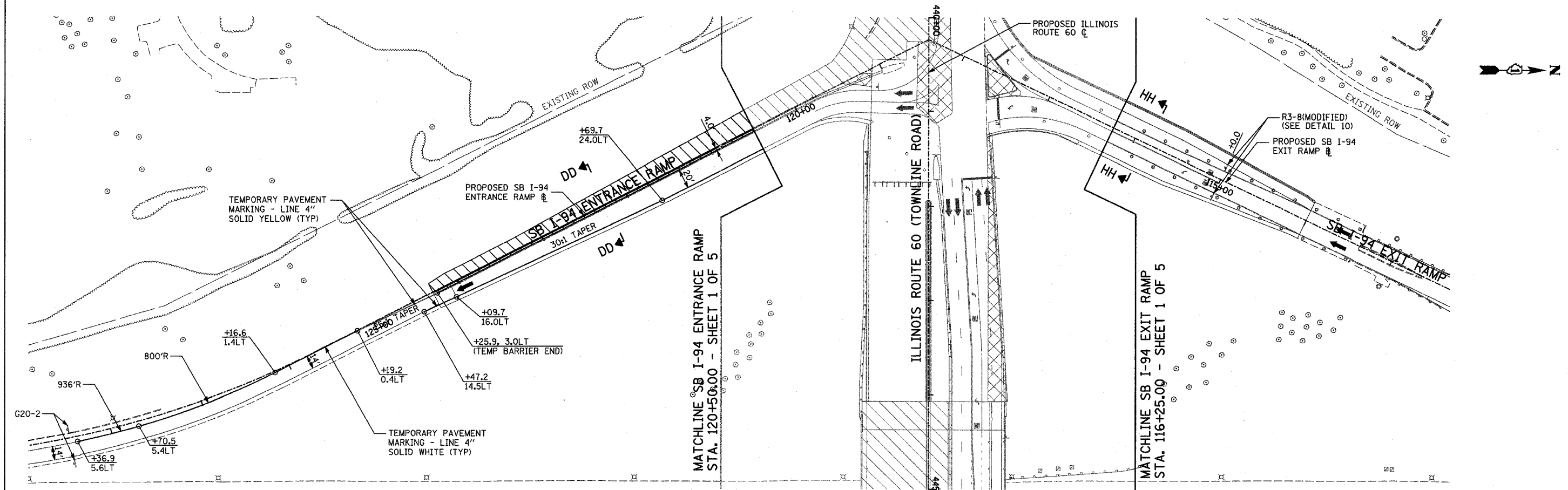


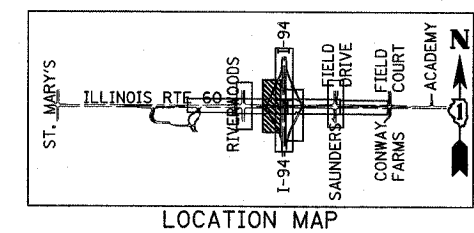
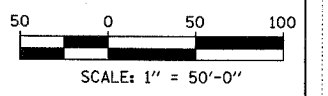
F.A.P. RTE.	SECTION	COUNTY	TOTAL SHEETS	SHEET NO.
335	119R-2	LAKE	439	123
STA. 432+83.12		TO STA. 470+56.84		
FED. ROAD DIST. NO.		ILLINOIS	FED. AID PROJECT	

60B01



**LEGEND:**

- CONSTRUCTION ZONE
- TEMPORARY PAVEMENT
- TRAFFIC MOVEMENT
- TEMPORARY SIGN (SEE M.O.T. SIGNING LEGEND)
- TYPE II BARRICADES OR DRUMS W/ MONO-DIRECTIONAL STEADY BURNING LIGHT
- TYPE III BARRICADE W/2 FLASHING BIDIRECTIONAL LIGHTS
- TEMPORARY CONCRETE BARRIER
- ARROW BOARD
- M.O.T. APPURTENANCES REMAINING FROM PREVIOUS STAGES



REVISIONS	
NAME	DATE

ILLINOIS DEPARTMENT OF TRANSPORTATION  
 ILLINOIS RTE 60 OVER I-94  
 MAINTENANCE OF TRAFFIC PLAN  
 SOUTHBOUND INTERSTATE 94 RAMP  
 STAGE 4 - SHEET 4 OF 5

SCALE: 1"=50'-0"  
 DATE: MAY 8, 2007  
 DRAWN BY: MPG, CBS  
 CHECKED BY: JDF

**TYLIN** INTERNATIONAL

05/02/2007 10:31:48 AM P:\60245811\60Yroad\60mtr\4\_sht4.dgn