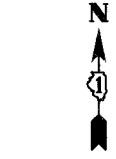


F.A.P. RTE.	SECTION	COUNTY	TOTAL SHEETS	SHEET NO.
335	119R-2	LAKE	439	132
STA. 432+83.12		TO STA. 470+56.84		
FED. ROAD DIST. NO.		ILLINOIS FED. AID PROJECT		

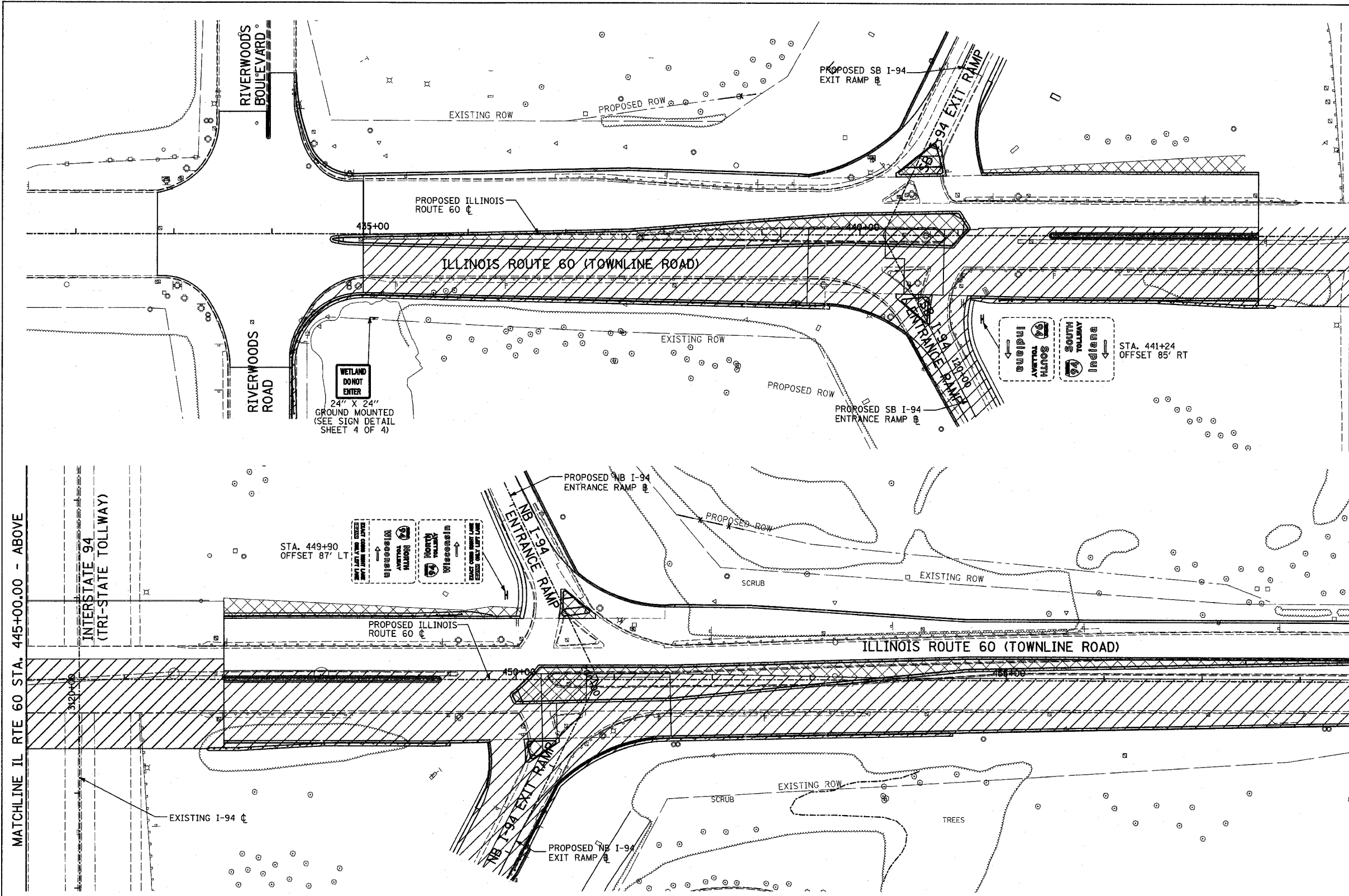
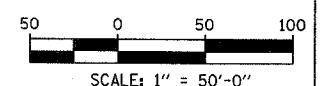
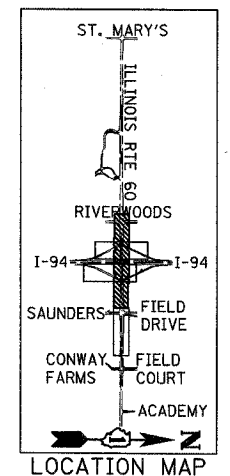
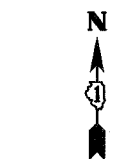
60B01



**TEMPORARY SIGNING LEGEND:**

- PROPOSED TEMPORARY SIGN PANEL LOCATION
- EXISTING LARGE SIGN PANEL
- PROPOSED SIGN PANEL

NOTE:  
ALL OTHER SIGNS THAT ARE OBTAINED BY, OR INTERFERED WITH BY, THE CONSTRUCTION OPERATIONS SHALL BE REMOVED AND RE-ERECTED WHEN DIRECTED BY THE ENGINEER, IN ACCORDANCE WITH ARTICLE 107.25.



MATCHLINE IL RTE 60 STA. 445+00.00 - ABOVE

MATCHLINE IL RTE 60 STA. 445+00.00 - BELOW

**TYLIN** INTERNATIONAL

REVISIONS	
NAME	DATE

ILLINOIS DEPARTMENT OF TRANSPORTATION  
ILLINOIS RTE 60 OVER I-94  
CONSTRUCTION SIGNING PLAN  
IL RTE 60 STA. 432+83.12 TO 458+50.00  
STAGES 3, 3A, & 4 - SHEET 2 OF 2  
SCALE: 1"=50'-0"  
DATE: MAY 8, 2007  
DRAWN BY: CBS  
CHECKED BY: MPG

P:\62\45811-50\road\60stn\_s102.dgn 5/8/2007 5:25:43 PM