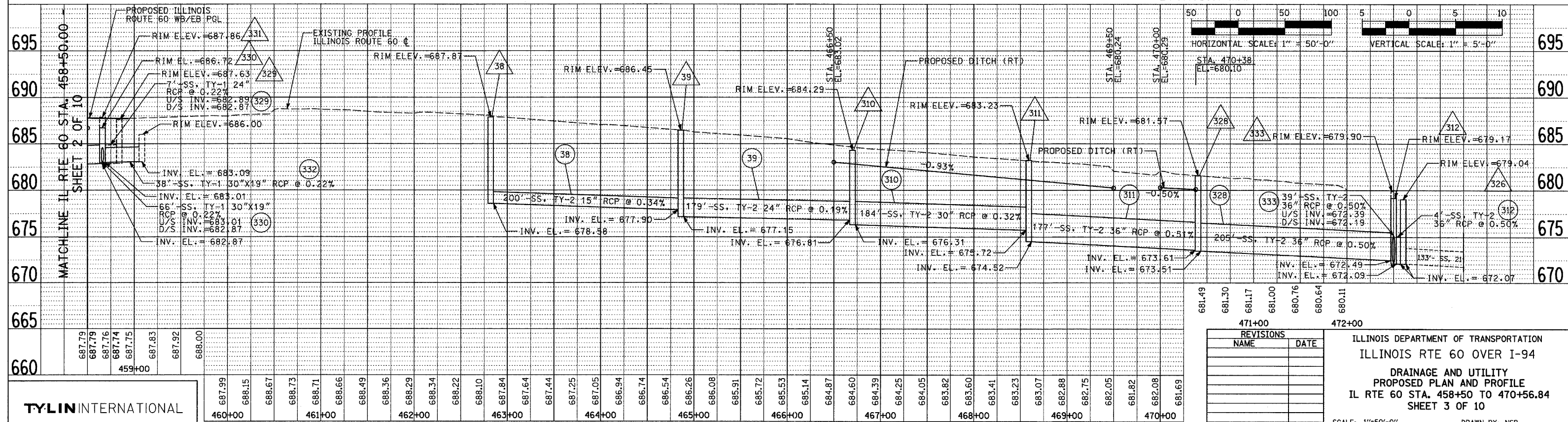
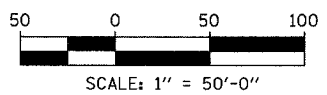
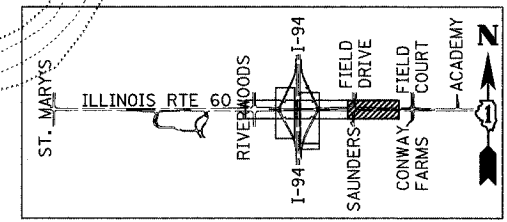


NOTES:

- CONNECT THE EXISTING SEWER TO PROPOSED STRUCTURE. THE COST SHALL NOT BE PAID FOR SEPARATELY BUT INCLUDED IN COST OF DRAINAGE STRUCTURE INSTALLATION.
- CONNECT THE PROPOSED SEWER TO DRAINAGE STRUCTURE. THE COST SHALL NOT BE PAID FOR SEPARATELY BUT SHALL BE INCLUDED IN THE COST OF SEWER INSTALLATION OF THE SIZE AND TYPE SHOWN ON PLANS.
- ALL PROPOSED DITCHES AND SWALES SHALL BE SEEDED USING NATIVE VEGETATION SUCH AS IDOT CLASS 4A, 4B OR 5A SEEDING MIXTURES UNLESS NOTED OTHERWISE.
- SEE DRAINAGE AND UTILITY SHEETS 6 THROUGH 10 FOR PROPOSED DRAINAGE IMPROVEMENTS ALONG SAUNDERS ROAD/FIELDS DRIVE AND ALONG EASTBOUND IL 60 EAST OF SAUNDERS ROAD/FIELDS DRIVE.
- FOR CLARITY, PIPE UNDERDRAINS ARE SHOWN OFFSET FROM THEIR PROPOSED LOCATIONS. SEE PROPOSED TYPICAL SECTIONS FOR PROPOSED PUD LOCATIONS. FOR DETAILED PLACEMENT, SEE ILLINOIS TOLLWAY STANDARD B12-00, PIPE UNDERDRAINS (FILTER FABRIC) AND SLOTTED PAVEMENT DRAIN.
- EXISTING FIRE HYDRANT AND PART OF WATER MAIN TO BE RELOCATED BY OTHERS.
- EXISTING ELECTRIC DUCT BETWEEN STA. 461+00 AND STA. 468+00 +/- TO BE RELOCATED BY OTHERS.

LEGEND:

- (XY) PROPOSED STORM SEWER NUMBER (X=SHEET NO., Y=PIPE NO.)
- △(XY) PROPOSED STRUCTURE NUMBER (X=SHEET NO., Y=STRUCTURE NO.)
- SHEET FLOW



REVISIONS	
NAME	DATE

ILLINOIS DEPARTMENT OF TRANSPORTATION
 ILLINOIS RTE 60 OVER I-94
 DRAINAGE AND UTILITY
 PROPOSED PLAN AND PROFILE
 IL RTE 60 STA. 458+50 TO 470+56.84
 SHEET 3 OF 10

SCALE: 1"=50'-0"
 DATE: MAY 8, 2007
 DRAWN BY: NSB
 CHECKED BY: DA