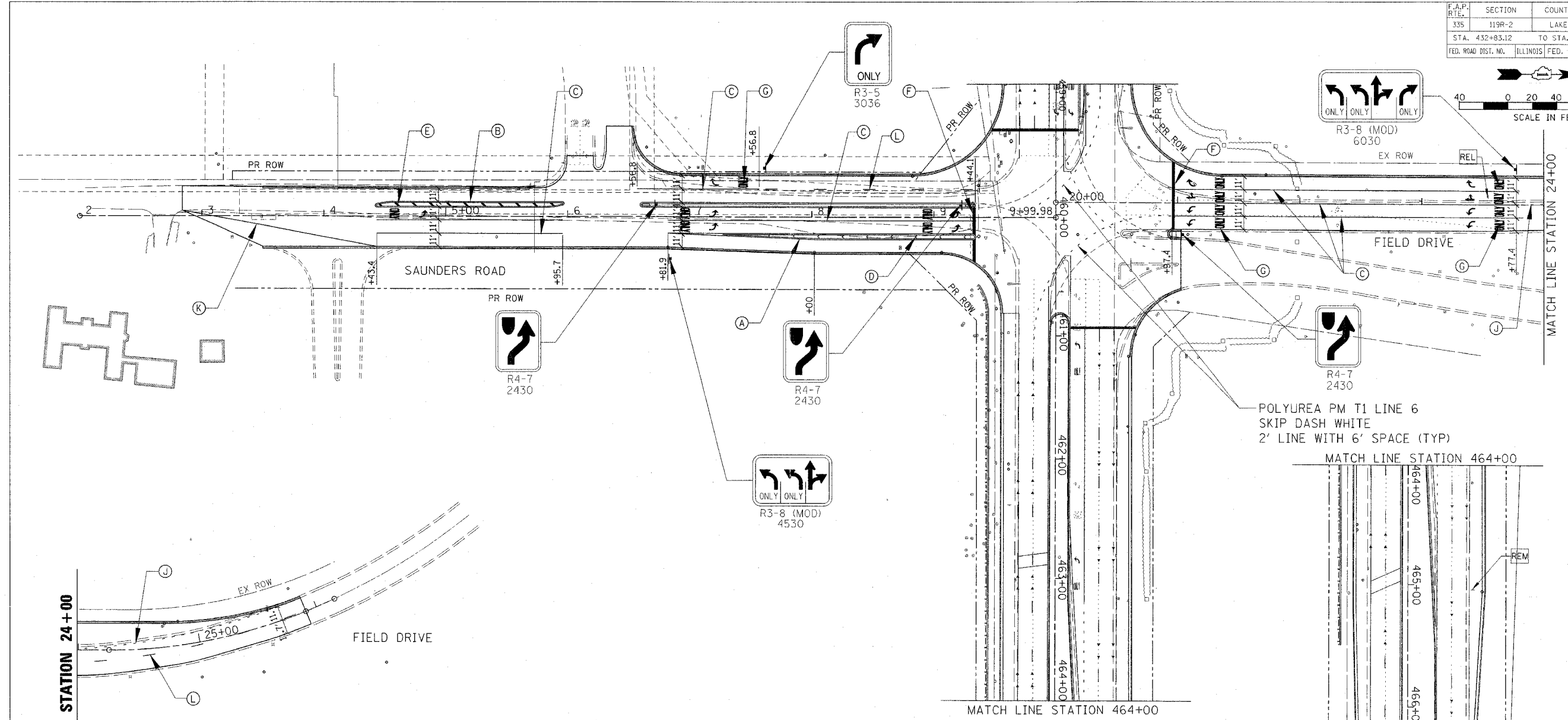
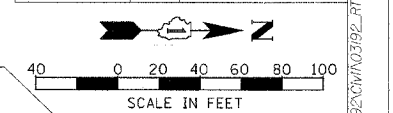


F.A.P. RT. E.	SECTION	COUNTY	TOTAL SHEETS NO.	SHEET NO.
335	119R-2	LAKE	439	170
STA. 432+85.12		TO STA. 470+56.84		
FED. ROAD DIST. NO.		ILLINOIS FED. AID PROJECT		



MATCH LINE STATION 24+00

MATCH LINE STATION 24+00

MATCH LINE STATION 464+00

MATCH LINE STATION 464+00

- LEGEND (BITUMINOUS PAVEMENT):
- (A) THERMOPLASTIC PAVEMENT MARKING - LINE 4" (DOUBLE WHITE @ 11" C-C)
 - (B) THERMOPLASTIC PAVEMENT MARKING - LINE 4" (DOUBLE YELLOW @ 11" C-C)
 - (C) THERMOPLASTIC PAVEMENT MARKING - LINE 6" (WHITE)
 - (D) THERMOPLASTIC PAVEMENT MARKING - LINE 12" (WHITE)
 - (E) THERMOPLASTIC PAVEMENT MARKING - LINE 12" (YELLOW)
 - (F) THERMOPLASTIC PAVEMENT MARKING - LINE 24" (WHITE)
 - (G) THERMOPLASTIC PAVEMENT MARKING - LETTERS AND SYMBOLS (WHITE)
 - (J) THERMOPLASTIC PAVEMENT MARKING - LINE 4" (WHITE SKIP-DASH 6'-2')
 - (K) THERMOPLASTIC PAVEMENT MARKING - LINE 4" (WHITE)
 - (L) THERMOPLASTIC PAVEMENT MARKING - LINE 4" (WHITE SKIP-DASH 30'-10')
 - REL RELOCATE EXISTING SIGN
 - REM REMOVE EXISTING SIGN

NOTES:
 SEE PROPOSED SIGNING PLAN SHEET 2 OF 4 FOR PROPOSED SIGNING ALONG IL RTE 60
 SEE PAVEMENT MARKING AND LANDSCAPING PLAN SHEET 2 OF 6 FOR PAVEMENT MARKING ALONG IL RTE 60

REVISIONS	
NAME	DATE

ILLINOIS DEPARTMENT OF TRANSPORTATION
 ILLINOIS RTE 60 OVER I-94
 PAVEMENT MARKING AND SIGNING PLAN
 INTERSECTION OF IL RTE 60
 AND SAUNDRES RD/FIELD DR
 SHEET 6 OF 6

SCALE: 1"=40'
 DATE: MAY 8, 2007
 DRAWN BY: GT
 CHECKED BY: MCW

CHRISTOPHER B. BURKE ENGINEERING LTD.
 9275 West Higgins Road, Suite 600
 Rosemont, Illinois 60018
 (847) 833-9500

5/2/2007 10:21:07 AM