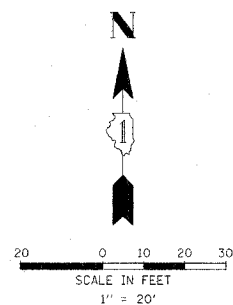


NOTES FOR TEMPORARY TRAFFIC SIGNALS

1. ALL CONTROL EQUIPMENT INCLUDING EMERGENCY PRE-EMPTION AND COMMUNICATION DEVICES FOR THE TEMPORARY TRAFFIC SIGNAL(S) SHALL BE FURNISHED BY THE CONTRACTOR.
2. ONLY CONTROLLERS SUPPLIED BY ONE OF THE DISTRICT APPROVED CLOSED LOOP EQUIPMENT MANUFACTURERS WILL BE APPROVED FOR USE AT TEMPORARY SIGNAL LOCATIONS. ALL CONTROLLERS USED FOR TEMPORARY TRAFFIC SIGNALS SHALL BE FULLY ACTUATED NEMA MICROPROCESSOR BASED WITH RS232 DATA ENTRY PORTS COMPATIBLE WITH EXISTING MONITORING SOFTWARE APPROVED BY IDOT DISTRICT 1, INSTALLED IN A NEMA TS1 OR TS2 CABINET. ONLY ONE BRAND OF CONTROLLER WILL BE ACCEPTED FOR ANY ONE CONTRACT.
3. ALL TRAFFIC SIGNAL SECTIONS AND PEDESTRIAN SIGNAL SECTIONS SHALL BE 12" (300mm). HEADS SHALL BE PLACED AS INDICATED ON THE TEMPORARY TRAFFIC SIGNAL PLAN OR AS DIRECTED BY THE ENGINEER. THE CONTRACTOR SHALL FURNISH ENOUGH CABLE SLACK TO RELOCATE HEADS TO ANY POSITION ON THE SPAN WIRE OR AT LOCATIONS ILLUSTRATED ON THE PLANS FOR CONSTRUCTION STAGING. THE TEMPORARY TRAFFIC SIGNAL SHALL REMAIN IN OPERATION DURING ALL SIGNAL HEAD RELOCATIONS. EACH TEMPORARY TRAFFIC SIGNAL HEAD SHALL HAVE ITS OWN CABLE FROM THE CONTROLLER CABINET TO THE SIGNAL HEAD.
4. ALL EXISTING STREET NAME AND INTERSECTION REGULATORY SIGNS SHALL BE REMOVED FROM EXISTING POLES, RELOCATED AND SECURELY FASTENED TO THE SIGNAL SPAN WIRE OR WOOD POLE AS DIRECTED BY THE ENGINEER.
5. ANY TEMPORARY SIGNAL WITHIN AN EXISTING CLOSED LOOP TRAFFIC SIGNAL SYSTEM SHALL BE INTERCONNECTED TO THAT SYSTEM USING SIMILAR BRAND CONTROL EQUIPMENT.
6. THE TEMPORARY TRAFFIC SIGNAL SHALL HAVE THE SIGNAL HEAD DISPLAYS, SIGNAL HEAD PLACEMENTS AND CONTROLLER PHASING MATCH THE EXISTING TRAFFIC SIGNAL, AT THE TIME OF THE TURN ON, IF NO TRAFFIC STAGING IS IN PLACE OR WILL NOT BE STAGED ON THE DAY OF THE TURN ON.



TEMPORARY TRAFFIC SIGNAL LEGEND

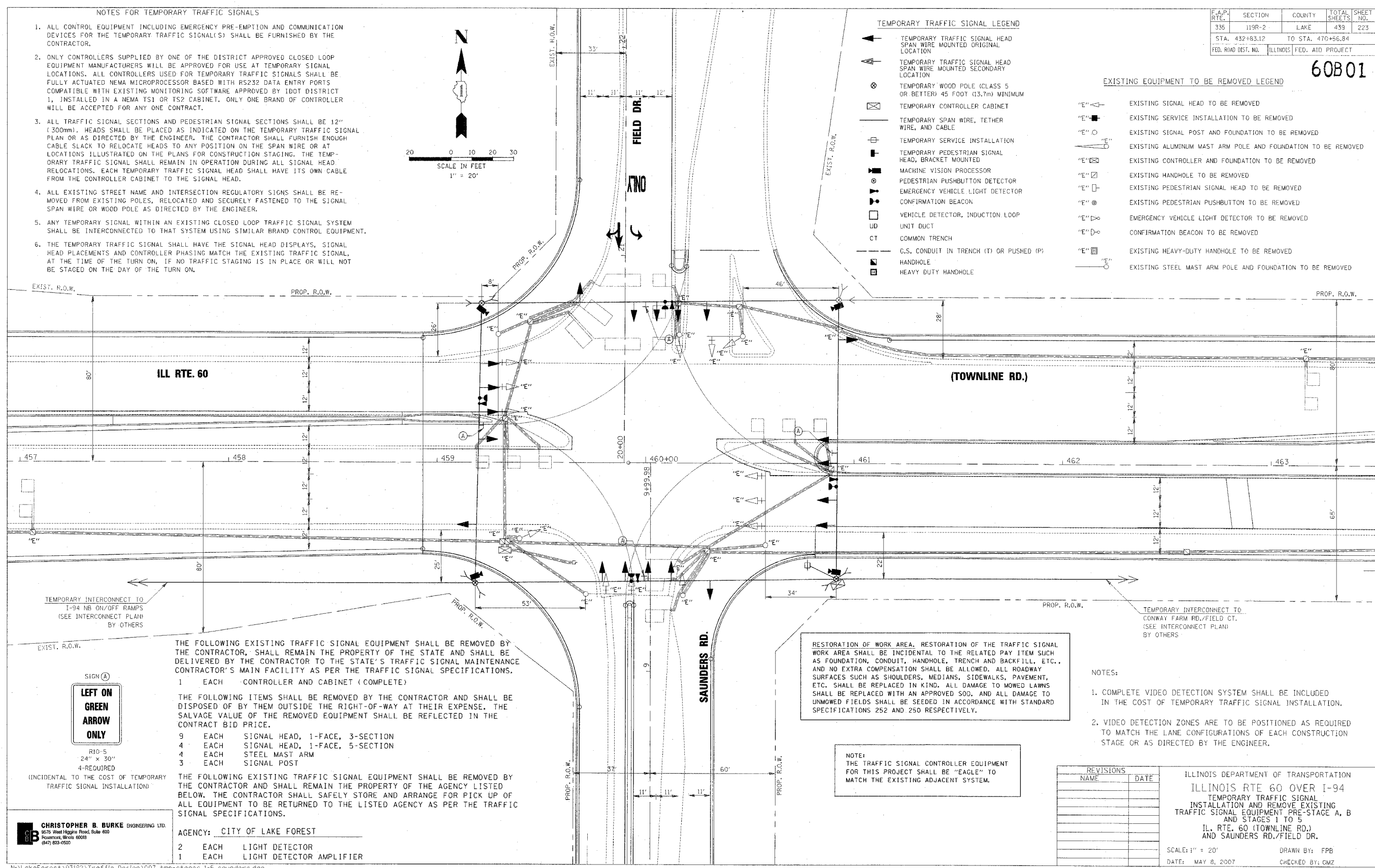
- ▲ TEMPORARY TRAFFIC SIGNAL HEAD SPAN WIRE MOUNTED ORIGINAL LOCATION
- ▲ TEMPORARY TRAFFIC SIGNAL HEAD SPAN WIRE MOUNTED SECONDARY LOCATION
- ⊗ TEMPORARY WOOD POLE (CLASS 5 OR BETTER) 45 FOOT (13.7m) MINIMUM
- ⊠ TEMPORARY CONTROLLER CABINET
- TEMPORARY SPAN WIRE, TETHER WIRE, AND CABLE
- ⊕ TEMPORARY SERVICE INSTALLATION
- ⊖ TEMPORARY PEDESTRIAN SIGNAL HEAD, BRACKET MOUNTED
- ⊙ MACHINE VISION PROCESSOR
- ⊚ PEDESTRIAN PUSHBUTTON DETECTOR
- ⊛ EMERGENCY VEHICLE LIGHT DETECTOR
- ⊜ CONFIRMATION BEACON
- ⊝ VEHICLE DETECTOR, INDUCTION LOOP
- ⊞ UNIT DUCT
- ⊟ COMMON TRENCH
- ⊠ G.S. CONDUIT IN TRENCH (T) OR PUSHED (P)
- ⊡ HANDHOLE
- ⊢ HEAVY DUTY HANDHOLE

EXISTING EQUIPMENT TO BE REMOVED LEGEND

- "E" ▲ EXISTING SIGNAL HEAD TO BE REMOVED
- "E" ⊠ EXISTING SERVICE INSTALLATION TO BE REMOVED
- "E" ○ EXISTING SIGNAL POST AND FOUNDATION TO BE REMOVED
- "E" ⊕ EXISTING ALUMINUM MAST ARM POLE AND FOUNDATION TO BE REMOVED
- "E" ⊗ EXISTING CONTROLLER AND FOUNDATION TO BE REMOVED
- "E" ⊚ EXISTING HANDHOLE TO BE REMOVED
- "E" ⊛ EXISTING PEDESTRIAN SIGNAL HEAD TO BE REMOVED
- "E" ⊜ EXISTING PEDESTRIAN PUSHBUTTON TO BE REMOVED
- "E" ⊝ EXISTING VEHICLE LIGHT DETECTOR TO BE REMOVED
- "E" ⊞ EXISTING CONFIRMATION BEACON TO BE REMOVED
- "E" ⊠ EXISTING HEAVY-DUTY HANDHOLE TO BE REMOVED
- "E" ⊡ EXISTING STEEL MAST ARM POLE AND FOUNDATION TO BE REMOVED

F.A.P. RTE.	SECTION	COUNTY	TOTAL SHEETS	SHEET NO.
335	119R-2	LAKE	439	223
STA. 432+193.12		TO STA. 470+56.84		
FED. ROAD DIST. NO.	ILLINOIS	FED. AID PROJECT		

60B01



TEMPORARY INTERCONNECT TO I-94 NB ON/OFF RAMP (SEE INTERCONNECT PLAN BY OTHERS)

TEMPORARY INTERCONNECT TO CONWAY FARM RD./FIELD CT. (SEE INTERCONNECT PLAN BY OTHERS)

THE FOLLOWING EXISTING TRAFFIC SIGNAL EQUIPMENT SHALL BE REMOVED BY THE CONTRACTOR, SHALL REMAIN THE PROPERTY OF THE STATE AND SHALL BE DELIVERED BY THE CONTRACTOR TO THE STATE'S TRAFFIC SIGNAL MAINTENANCE CONTRACTOR'S MAIN FACILITY AS PER THE TRAFFIC SIGNAL SPECIFICATIONS.

- 1 EACH CONTROLLER AND CABINET (COMPLETE)
- 9 EACH SIGNAL HEAD, 1-FACE, 3-SECTION
- 4 EACH SIGNAL HEAD, 1-FACE, 5-SECTION
- 4 EACH STEEL MAST ARM
- 3 EACH SIGNAL POST

THE FOLLOWING EXISTING TRAFFIC SIGNAL EQUIPMENT SHALL BE REMOVED BY THE CONTRACTOR AND SHALL REMAIN THE PROPERTY OF THE AGENCY LISTED BELOW. THE CONTRACTOR SHALL SAFELY STORE AND ARRANGE FOR PICK UP OF ALL EQUIPMENT TO BE RETURNED TO THE LISTED AGENCY AS PER THE TRAFFIC SIGNAL SPECIFICATIONS.

- AGENCY: CITY OF LAKE FOREST
- 2 EACH LIGHT DETECTOR
 - 1 EACH LIGHT DETECTOR AMPLIFIER

RESTORATION OF WORK AREA, RESTORATION OF THE TRAFFIC SIGNAL WORK AREA SHALL BE INCIDENTAL TO THE RELATED PAY ITEM SUCH AS FOUNDATION, CONDUIT, HANDHOLE, TRENCH AND BACKFILL, ETC., AND NO EXTRA COMPENSATION SHALL BE ALLOWED. ALL ROADWAY SURFACES SUCH AS SHOULDERS, MEDIANS, SIDEWALKS, PAVEMENT, ETC. SHALL BE REPLACED IN KIND. ALL DAMAGE TO MOWED LAWNS SHALL BE REPLACED WITH AN APPROVED SOD, AND ALL DAMAGE TO UNMOWED FIELDS SHALL BE SEEDED IN ACCORDANCE WITH STANDARD SPECIFICATIONS 252 AND 250 RESPECTIVELY.

NOTE: THE TRAFFIC SIGNAL CONTROLLER EQUIPMENT FOR THIS PROJECT SHALL BE "EAGLE" TO MATCH THE EXISTING ADJACENT SYSTEM.

- NOTES:
1. COMPLETE VIDEO DETECTION SYSTEM SHALL BE INCLUDED IN THE COST OF TEMPORARY TRAFFIC SIGNAL INSTALLATION.
 2. VIDEO DETECTION ZONES ARE TO BE POSITIONED AS REQUIRED TO MATCH THE LANE CONFIGURATIONS OF EACH CONSTRUCTION STAGE OR AS DIRECTED BY THE ENGINEER.



(INCIDENTAL TO THE COST OF TEMPORARY TRAFFIC SIGNAL INSTALLATION)

CHRISTOPHER B. BURKE ENGINEERING LTD.
6675 West Higgins Road, Suite 600
Rosemont, Illinois 60018
(847) 823-0500

REVISIONS	
NAME	DATE

ILLINOIS DEPARTMENT OF TRANSPORTATION
ILLINOIS RTE 60 OVER I-94
TEMPORARY TRAFFIC SIGNAL
INSTALLATION AND REMOVE EXISTING
TRAFFIC SIGNAL EQUIPMENT PRE-STAGE A, B
AND STAGES 1 TO 5
ILL. RTE. 60 (TOWNLINE RD.)
AND SAUNDERS RD./FIELD DR.

SCALE: 1" = 20' DRAWN BY: FPB
DATE: MAY 8, 2007 CHECKED BY: GMZ

5/2/2007 9:54:47 AM